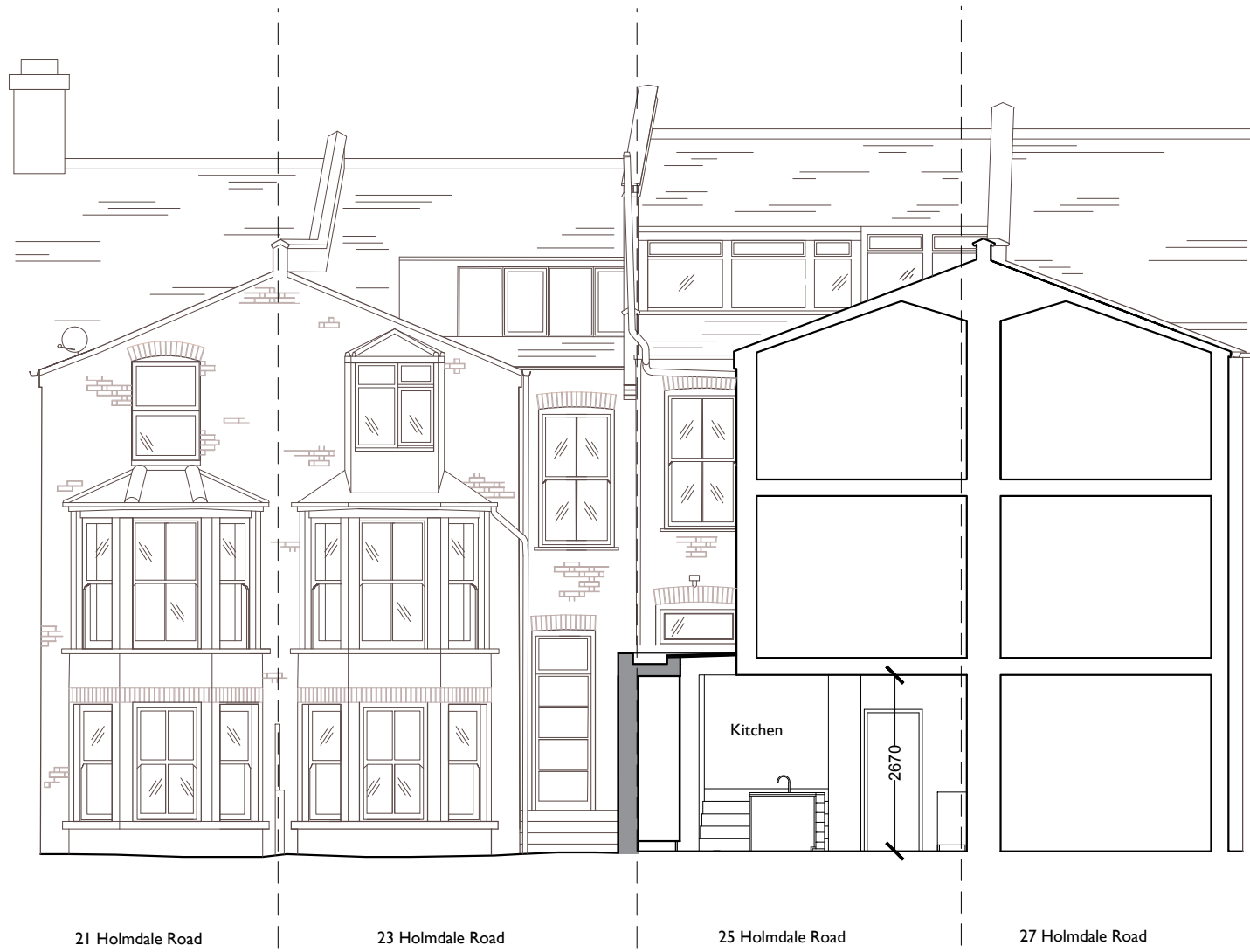


notes

Proposed



21 Holmdale Road      23 Holmdale Road      25 Holmdale Road      27 Holmdale Road

Proposed Holmdale road section CC

# DRAFT

A 02/06/16 Planning  
/ 06/04/16 Planning  
rev date amendment  
project 25 Holmdale Road

scale 1:100 @ A3

drawing Proposed Section CC

drawing no. PL - 313

Paul+O Architects Ltd  
Unit 8, 73 Maygrove Road  
NW6 2EG  
t/f +44 020 7604 3818  
[www.paul-o-architects.com](http://www.paul-o-architects.com)

