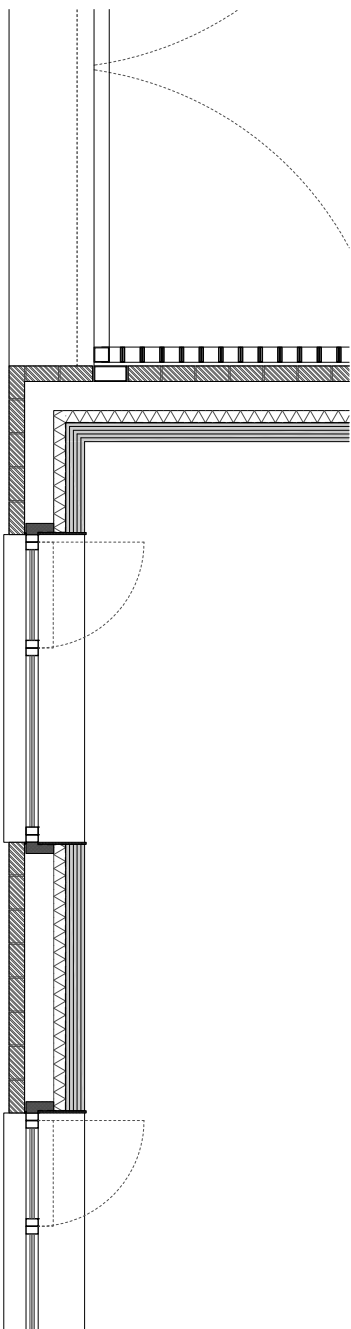
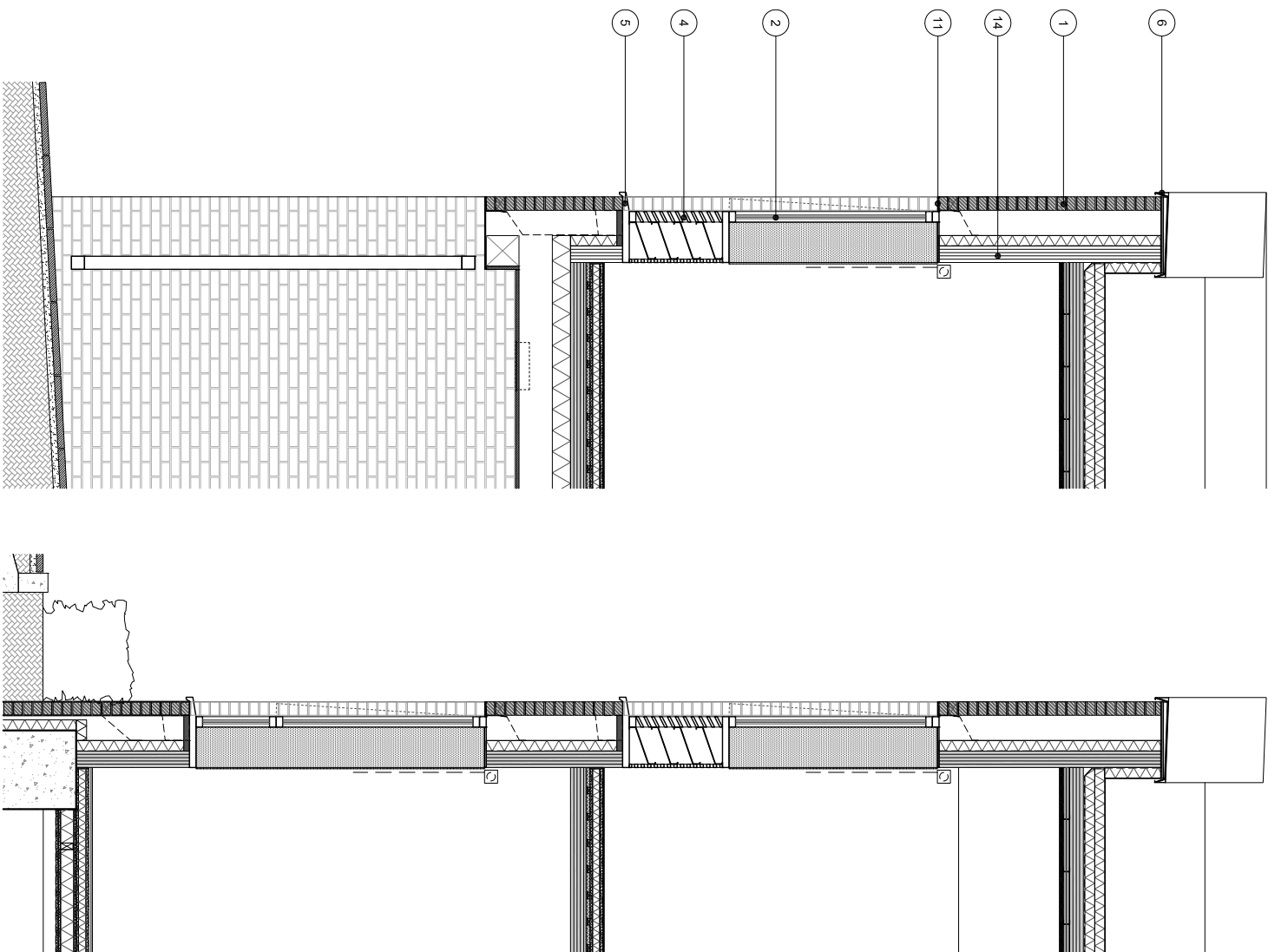




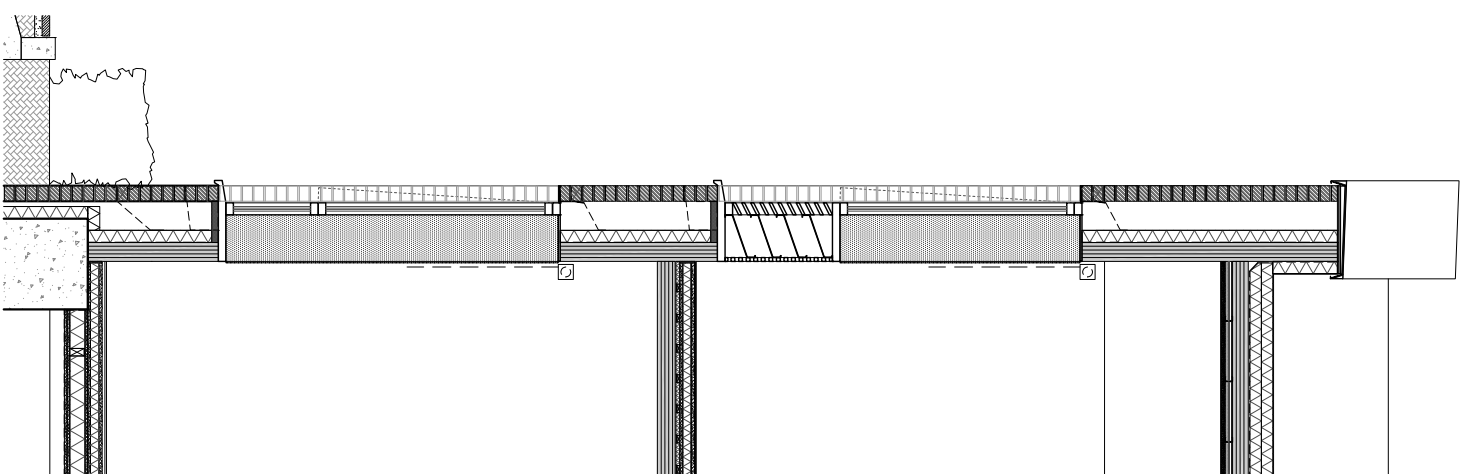
### School Building 01 West Elevation



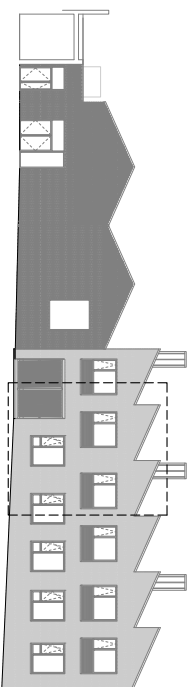
## School Building 01 Ground Floor Plan



Section A-A



Section B-B



### School Building 01 West Elevation Key



Do not scale from this drawing. Verify all dimensions on site. Drawing should be read in conjunction with information from all other design consultants and contractors. All drawings in digital format are for reference only, paper copies are available on request.

## FOR PLANNING

© Maccreanor Lavington Ltd.

## MATERIALS KEY

1. Solid railing *MyStyle* block by "Traditional Brick & Stone", or similar approved. To be clad in stretcher bond with natural light grey colour mortar joint, colour ref: CFI Eurotec, M3ANK 100 or similar approved
2. Composite aluminium windows and doors, polyester powder coated colour ref: matt, RAL 7006
3. Steel bouvered doors to plant rooms, polyester powder coated colour ref: matt, RAL 7006
4. Steel bingraged bouvered ventilation panel, polyester powder coated finish, matt, RAL 7006
5. Aluminium rail, polyester powder coated colour ref: matt, RAL 7006
6. Aluminium coping, polyester powder coated colour ref: matt, RAL 7006
7. Steel gates, decorative design to be confirmed by architects, polyester powder coated colour ref: metallic, Champagne
8. Steel canopy posts and walkway balustrades, polyester powder coated colour ref: metallic, Champagne
9. Steel down pipe, polyester powder coated colour ref: matt, RAL 7006
10. School Signage, polyester powder coated steel, colour ref: metallic, Champagne
11. Aluminium soffit plate, polyester powder coated, colour ref: matt, RAL 7006
12. Timber slatted soffit with bingraged linear lighting
13. Sawtooth roof light
14. Cross laminated timber (CLT) structure
15. Roof vents for passive stack ventilation
16. Kitchen extract plant
17. Roof access hatch
18. Green roof
19. Soft pour play surface

Rev	Details	Dwn	Date
-----	---------	-----	------

**Application 01**  
**Expansion of Kingsgate Primary School**  
**& Redevelopment of Liddell Road Phase 01**

**Client:** London Borough of Camden

Title	School Bay Study
1. Title	1. Title
2. Author	2. Author
3. Year	3. Year
4. Journal	4. Journal
5. Volume	5. Volume
6. Issue	6. Issue
7. Pages	7. Pages
8. Abstract	8. Abstract
9. Keywords	9. Keywords
10. Summary	10. Summary
11. Conclusion	11. Conclusion
12. References	12. References

4.50 @ A3

Date	01-12-2014	Drawn	HD
------	------------	-------	----

MLUK / 403 / P1 / 520

**Maccreanor Livingston**

19-21 Nile Street  
London N1 7LL

t +44(0)207 336 73 53  
f +44(0)207 336 76 55  
e [uk@ml-architects.com](mailto:uk@ml-architects.com)