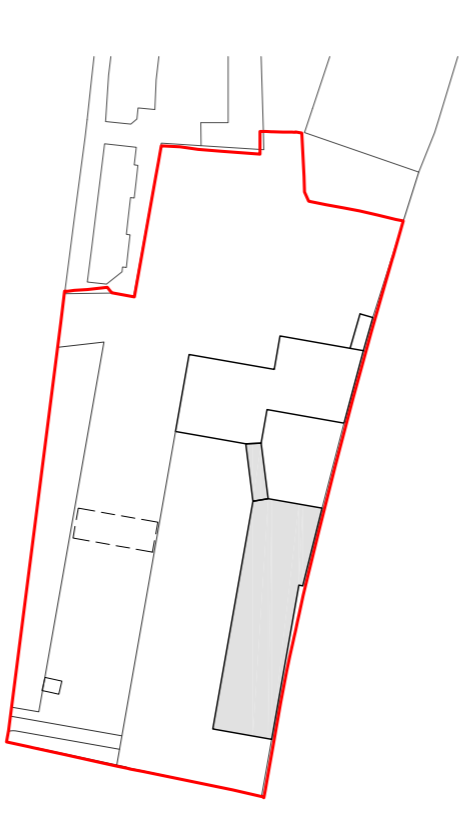
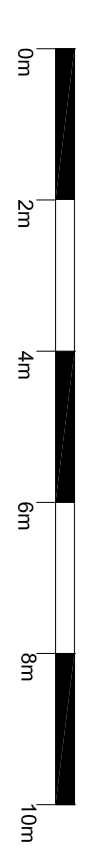
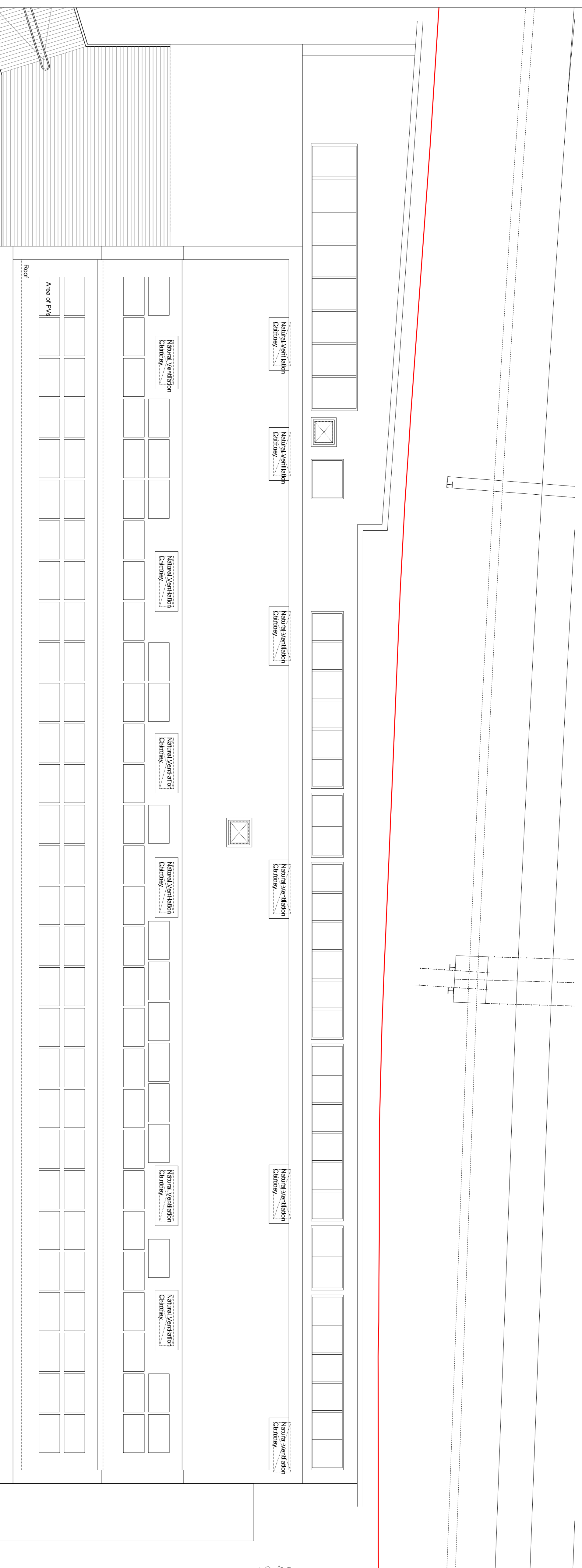


Do not scale from this drawing. Verify all dimensions on site. Drawing should be read in conjunction with information from all other design consultants and contractors. All drawings in digital format are for reference only, paper copies are available on request.

FOR PLANNING

© Maccreanor Lavington Ltd.

For proposed landscape information refer to JCLA landscape drawings submitted as part of this planning application



| Rev | Details | Dwn | Date |
|-----|---------|-----|------|
| | | | |

Application 01
Expansion of Kingsgate Primary School
& Redevelopment of Liddell Road Phase 01

Client: London Borough of Camden
 Title: School Building 02
 Roof Plan
 Scale: 1:100 @ A1 / 1:200 @ A3
 Date: 01-12-2014 Drawn: HDJP

MLA / 403 / P1 / 132

MaccreanorLavington
 3rd Floor
 19-21 Inns Street
 London N1 7LL
 t +44(0)207 336 73 53
 f +44(0)207 336 76 55
 e uk@mlarchitects.com

