

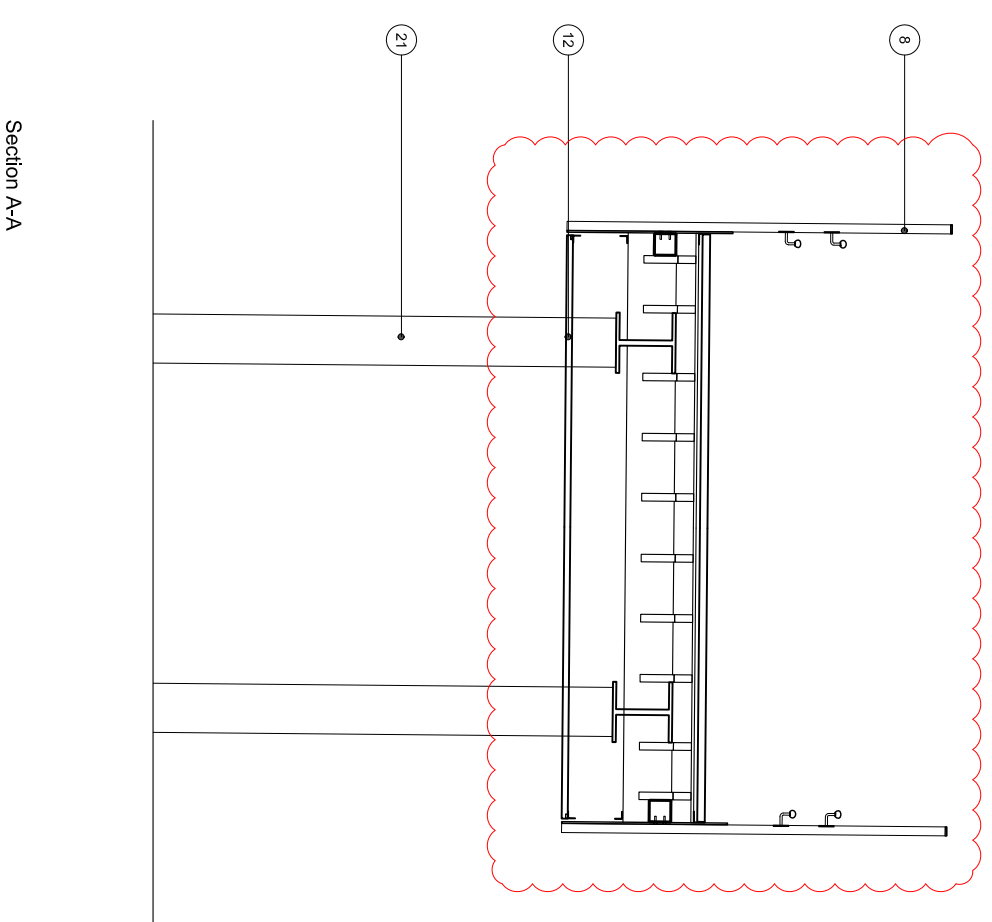
Do not scale from this drawing. Verify all dimensions on site. Drawing should be read in conjunction with information from all other design consultants and contractors. All drawings in digital format are for reference only, paper copies are available on request.

FOR PLANNING

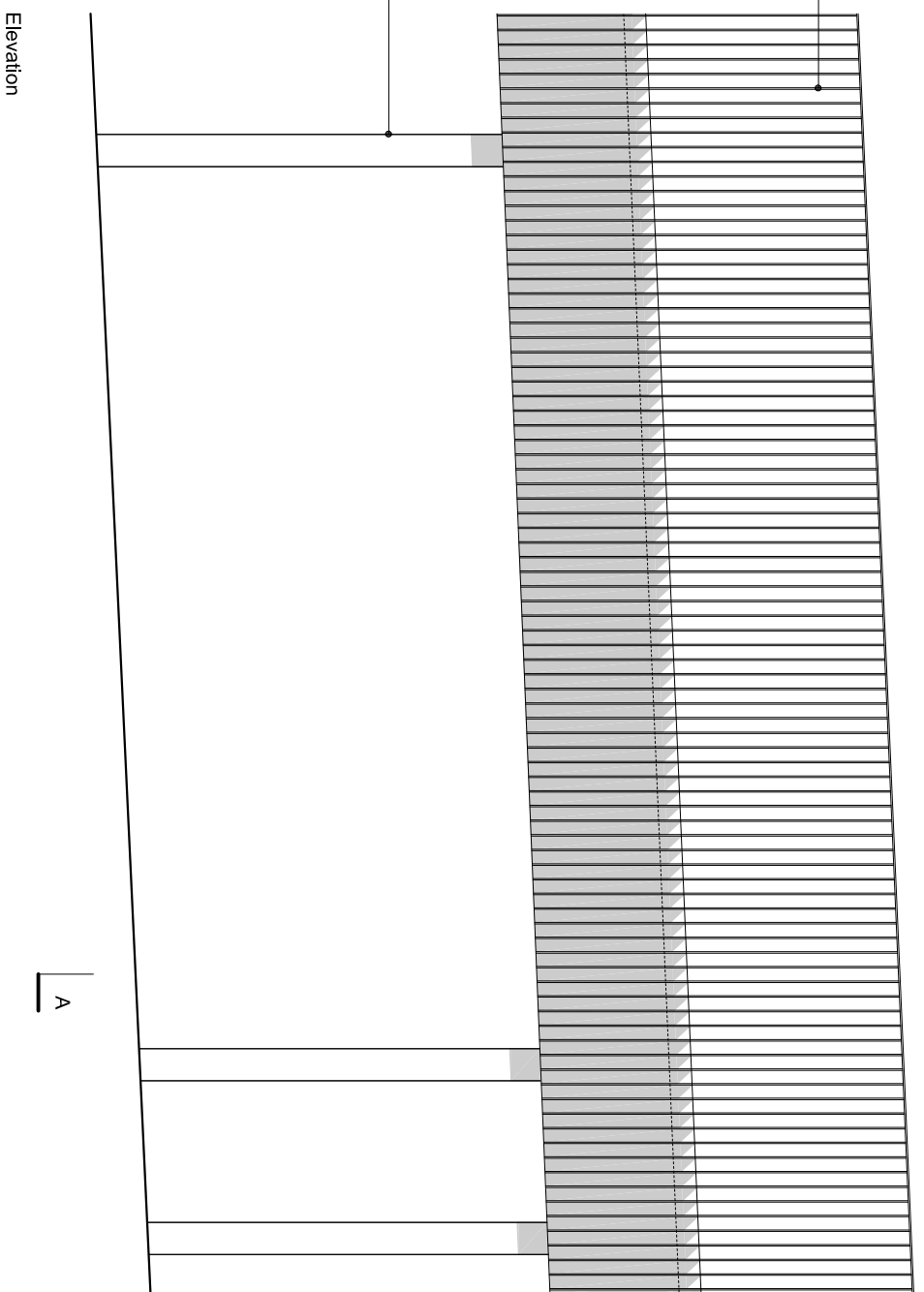
© Maccreanor Lavington Ltd.

MATERIALS KEY

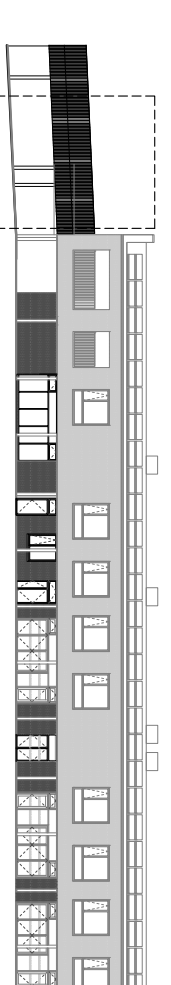
1. Solid facing Mysique brick by "Traditional Brick & Stone", or similar approved. To be laid in stretcher bond with natural light grey colour mortar joint, colour ref.: CPI Euromix, M3ANk100 or similar approved
2. Composite aluminium windows and doors, polyester powder coated colour ref: mat: RAL 7006
3. Steel Aluminium louvered doors to plant rooms, polyester powder coated colour ref: mat: RAL 7006
4. Steel integrated louvered ventilation panel- polyester powder coated- finish- mat: RAL 7006
5. Aluminium sill, polyester powder coated colour ref: mat: RAL 7006
6. Aluminium coping, polyester powder coated colour ref: mat: RAL 7006
7. Steel gates, decorative design to be confirmed by architects, polyester powder coated colour ref: metallic, Champagne
8. Steel canopy posts and walkway balustrades, polyester powder coated colour ref: metallic, Champagne
9. Steel down pipe- polyester powder coated colour ref: mat: RAL 7006
10. School signage, polyester powder coated steel, colour ref: metallic, Champagne
11. Aluminium soffit plate, polyester powder coated, colour ref: mat: RAL 7006
12. Timber slatted soffit with integrated linear lighting
13. Saw-tooth roof light
14. Cross Laminated Timber (CLT) structure
15. Ventilation Chimneys
16. Kitchen extract plant
17. Roof access hatch
18. Green roof
19. Steel louvered door to bin store with decorative pattern steel panel
20. One brick reveal
21. Steel columns, polyester powder coated colour: Champagne
22. Steel plate soffit, polyester powder coated colour: Champagne



Section A-A



Elevation



School Building 02 Nord Elevation Key



Rev	Details	JP	23.05.16
A	Planning Amendments		

Application 01
Expansion of Kingsgate Primary School
& Redevelopment of Liddell Road Phase 01

Client: London Borough of Camden
Title: School Bay Study
Canopy
Scale: 1:50 @ A3
Date: 01-12-2014

Drawn: TW / HD
MLUK / 403 / P1 / 524 - Rev A

MaccreanorLavington
3rd Floor
19-21 Nile Street
London N1 7TL
t +44(0)207 336 73 53
f +44(0)207 336 76 55
e uk@ml-lv-architects.com