

Do not scale from this drawing. Verify all dimensions on site. Drawing should be read in conjunction with information from all other design consultants and contractors. All drawings in digital format are for reference only, paper copies are available on request.

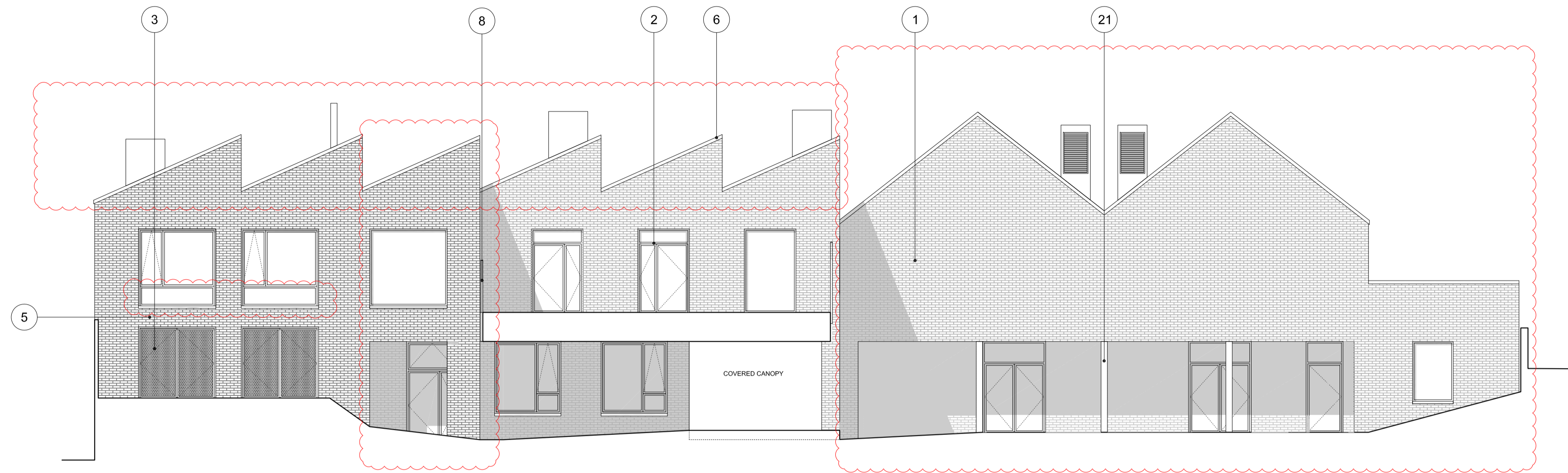
FOR PLANNING

© Maccreanor Lavington Ltd.

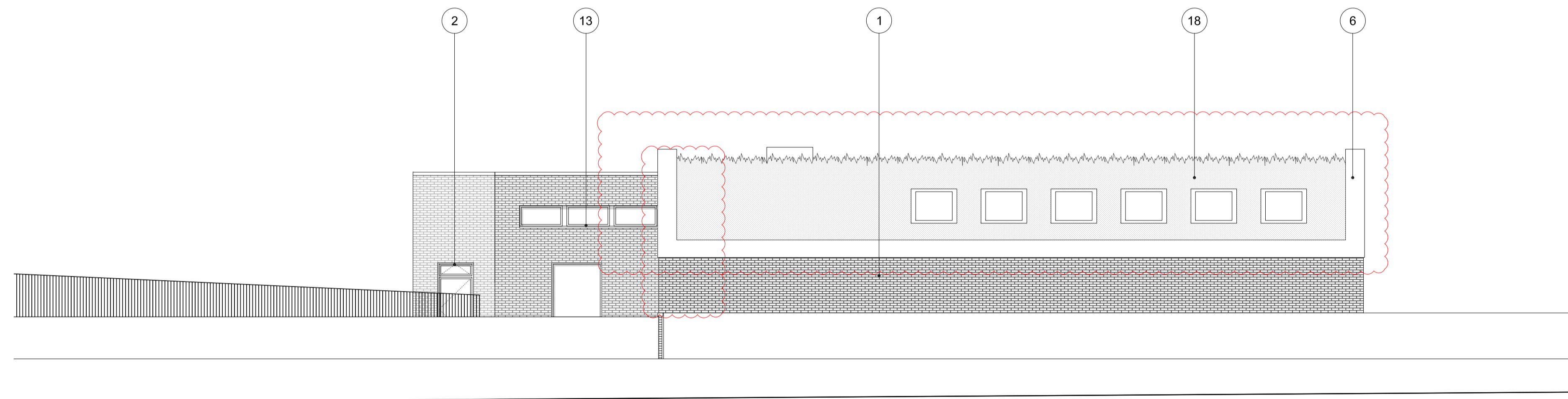
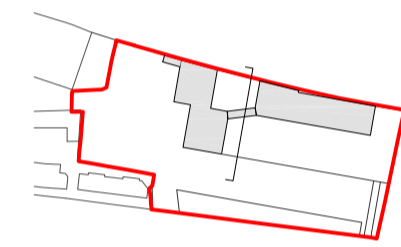
MATERIALS KEY

1. Solid facing Mystique brick by "Traditional Brick & Stone", or similar approved. To be laid in stretcher bond with natural light grey colour mortar joint, colour ref: "CPI Euromix, M3ANK100 or similar approved
2. Composite aluminium windows and doors, polyester powder coated colour ref: matt, RAL 7006
3. Steel Aluminium louvered doors to plant rooms, polyester powder coated colour ref: matt, RAL 7006
4. Steel integrated louvered ventilation panel, polyester powder coated finish, matt, RAL-7006
5. Aluminium sill, polyester powder coated colour ref: matt, RAL 7006
6. Aluminium coping, polyester powder coated colour ref: matt, RAL 7006
7. Steel gates, decorative design to be confirmed by architects, polyester powder coated colour ref: metallic, Champagne
8. Steel canopy posts and walkway balustrades, polyester powder coated colour ref: metallic, Champagne
9. Steel down pipe, polyester powder coated colour ref: matt, RAL-7006
10. School Signage, polyester powder coated steel, colour ref: metallic, Champagne
11. Aluminium soffit plate, polyester powder coated, colour ref: matt, RAL 7006
12. Timber slatted soffit with integrated linear lighting
13. Saw-tooth roof light
14. Cross Laminated Timber (CLT) structure
15. Ventilation Chimneys
16. Kitchen extract plant
17. Roof access hatch
18. Green roof
19. Steel louvered door to bin store with decorative pattern steel panel
20. One brick reveal
21. Steel columns, polyester powder coated colour: Champagne
22. Steel plate soffit, polyester powder coated colour: Champagne

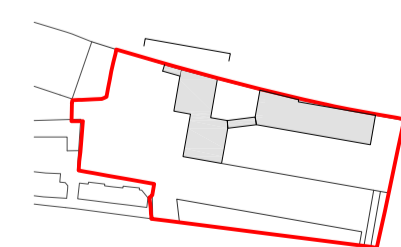
For proposed landscape information refer to JCLA landscape drawings submitted as part of this planning application



SCHOOL BUILDING 01 EAST ELEVATION



SCHOOL BUILDING 01 NORTH ELEVATION



A	Planning Amendments	JP	13.05.16
Rev	Details	Drwn	Date

Application 01 Expansion of Kingsgate Primary School & Redevelopment of Liddell Road Phase 01

Client: London Borough of Camden
 Title: School Building 01
 East and North Elevations
 Scale: 1:100 @ A1 / 1:200 @ A3
 Date: 01-12-2014 Drawn: JY

MLA / 403 / P1 / 321 - Rev A

MaccreanorLavington

3rd Floor
 19-21 Nile Street
 London N1 7LL

t +44(0)207 336 73 53
 f +44(0)207 336 76 55
 e uk@ml-architects.com

