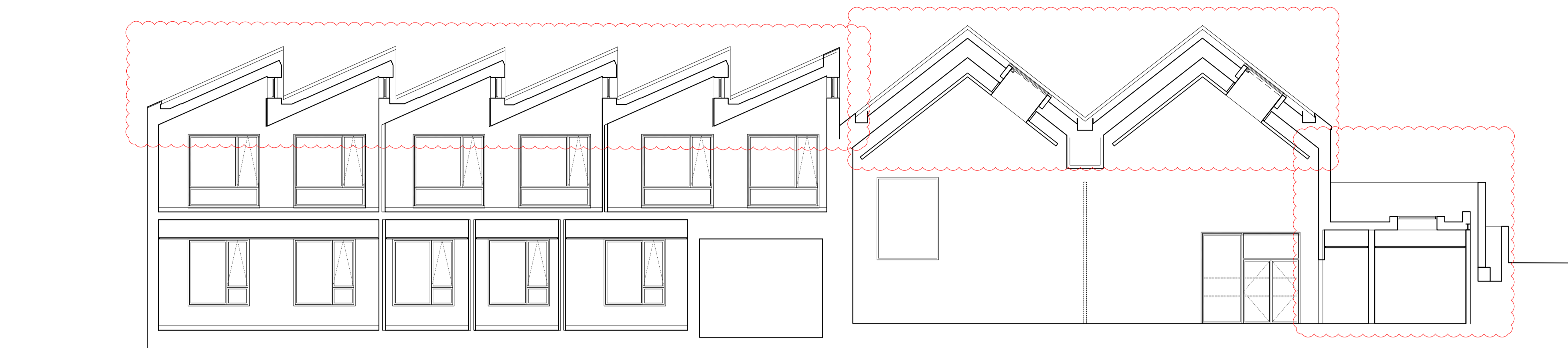


Do not scale from this drawing. Verify all dimensions on site. Drawing should be read in conjunction with information from all other design consultants and contractors. All drawings in digital format are for reference only, paper copies are available on request.

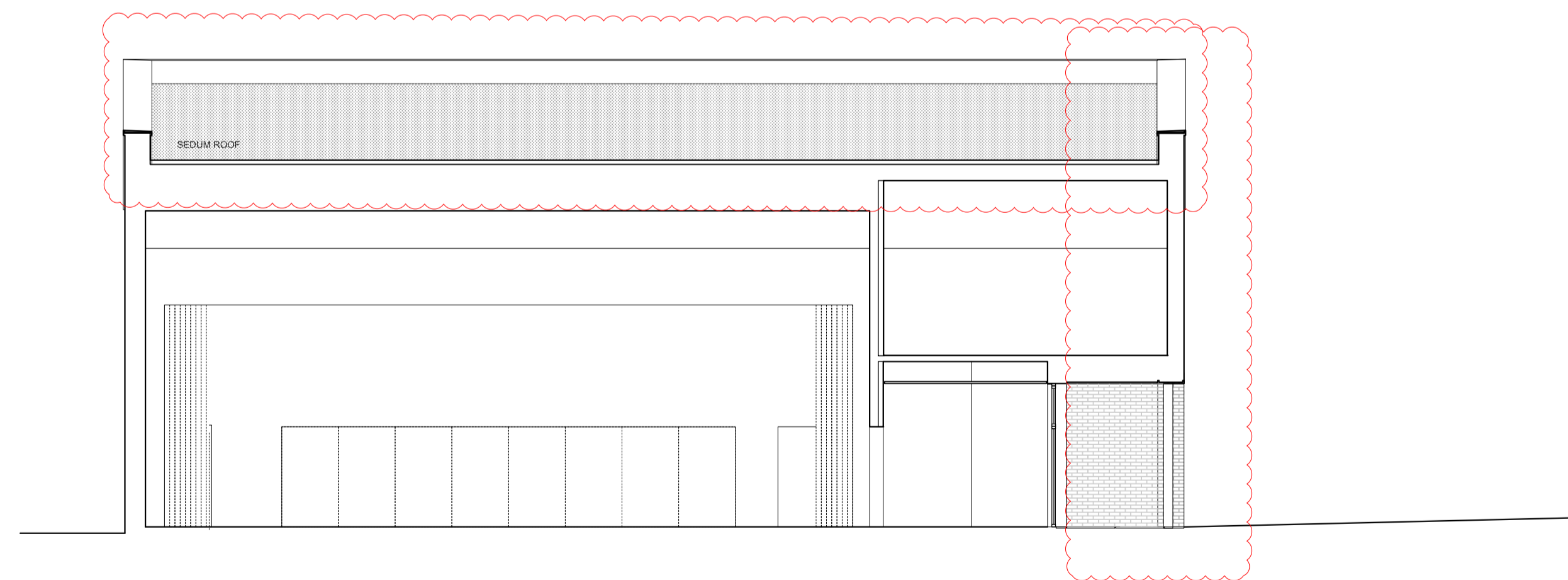
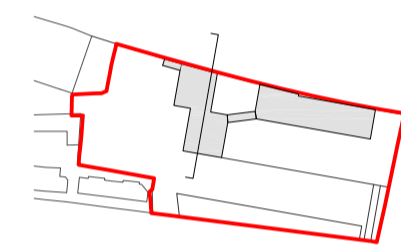
FOR PLANNING

© Maccreanor Lavington Ltd.

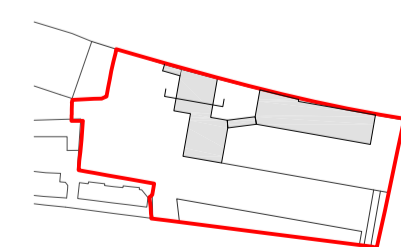
For proposed landscape information refer to JCLA landscape drawings submitted as part of this planning application



SECTION THROUGH ADMIN BLOCK, Y2 CLASSROOM AND HALL



SECTION THROUGH HALL



A	Planning Amendments	JP	20.05.16
Rev	Details	Drwn	Date

Application 01 Expansion of Kingsgate Primary School & Redevelopment of Liddell Road Phase 01

Client: London Borough of Camden
Title: School Building 01
Sections 01 and 02
Scale: 1:100 @ A1 / 1:200 @ A3
Date: 01-12-2014 Drawn: HD/IP

MLA / 403 / P1 / 220 - Rev A

MaccreanorLavington

3rd Floor
19-21 Nile Street
London N1 7LL

t +44(0)207 336 73 53
f +44(0)207 336 76 55
e uk@ml-architects.com

