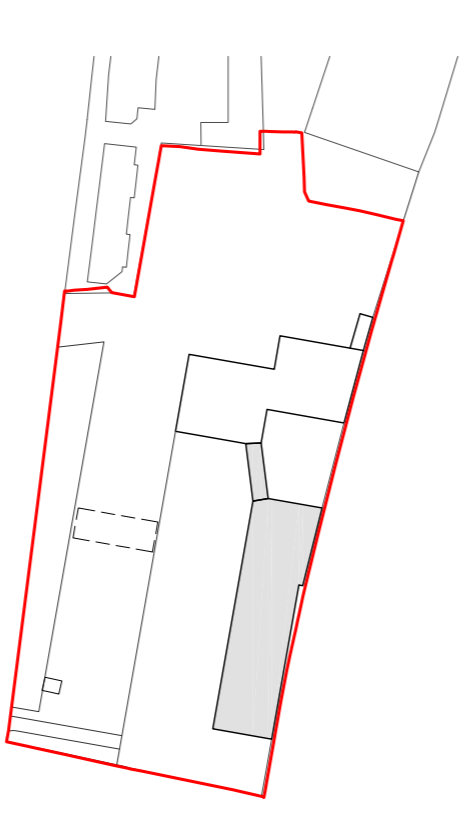
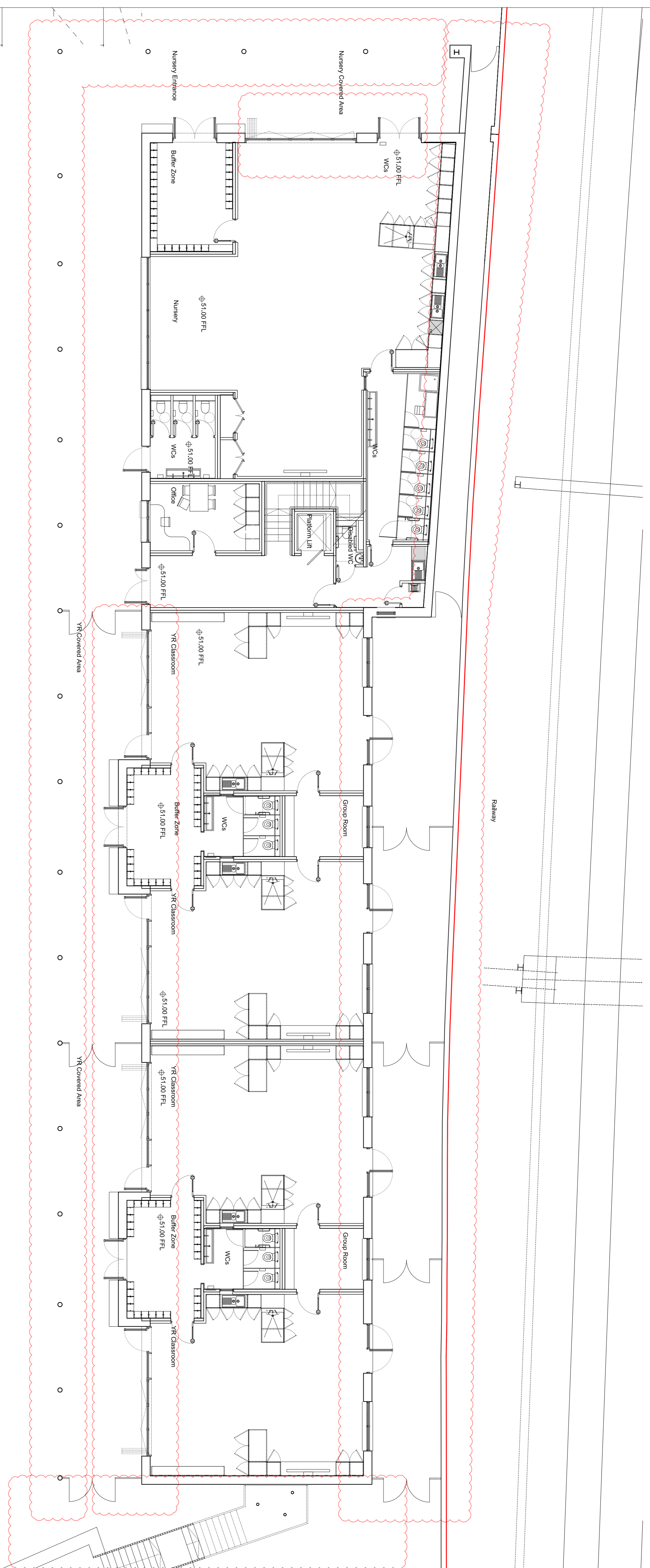


Do not scale from this drawing. Verify all dimensions on site. Drawing should be read in conjunction with information from all other design consultants and contractors. All drawings in digital format are for reference only, paper copies are available on request.

FOR PLANNING

© Maccreanor Lavington Ltd.

For proposed landscape information refer to JCL A Landscape drawings submitted as part of this planning application



Rev	Details	Dwn	Date
B	Planning Amendments	JP	24.05.16
A	Planning Amendments	JP	13.05.16

Application 01
Expansion of Kingsgate Primary School & Redevelopment of Liddell Road Phase 01
 Client: London Borough of Camden
 Title: School Building 02
 Ground Floor Plan
 Scale: 1:100 @ A1 / 1:200 @ A3
 Date: 01-12-2014
 Drawn: HDJP
MLA / 403 / P1 / 130 - Rev B

MaccreanorLavington
 3rd Floor
 19-21 Inns Street
 London N1 7LL
 t +44(0)207 336 73 53
 f +44(0)207 336 76 55
 e uk@mlarchitects.com

