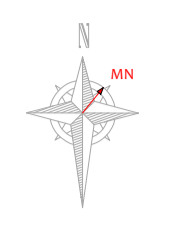
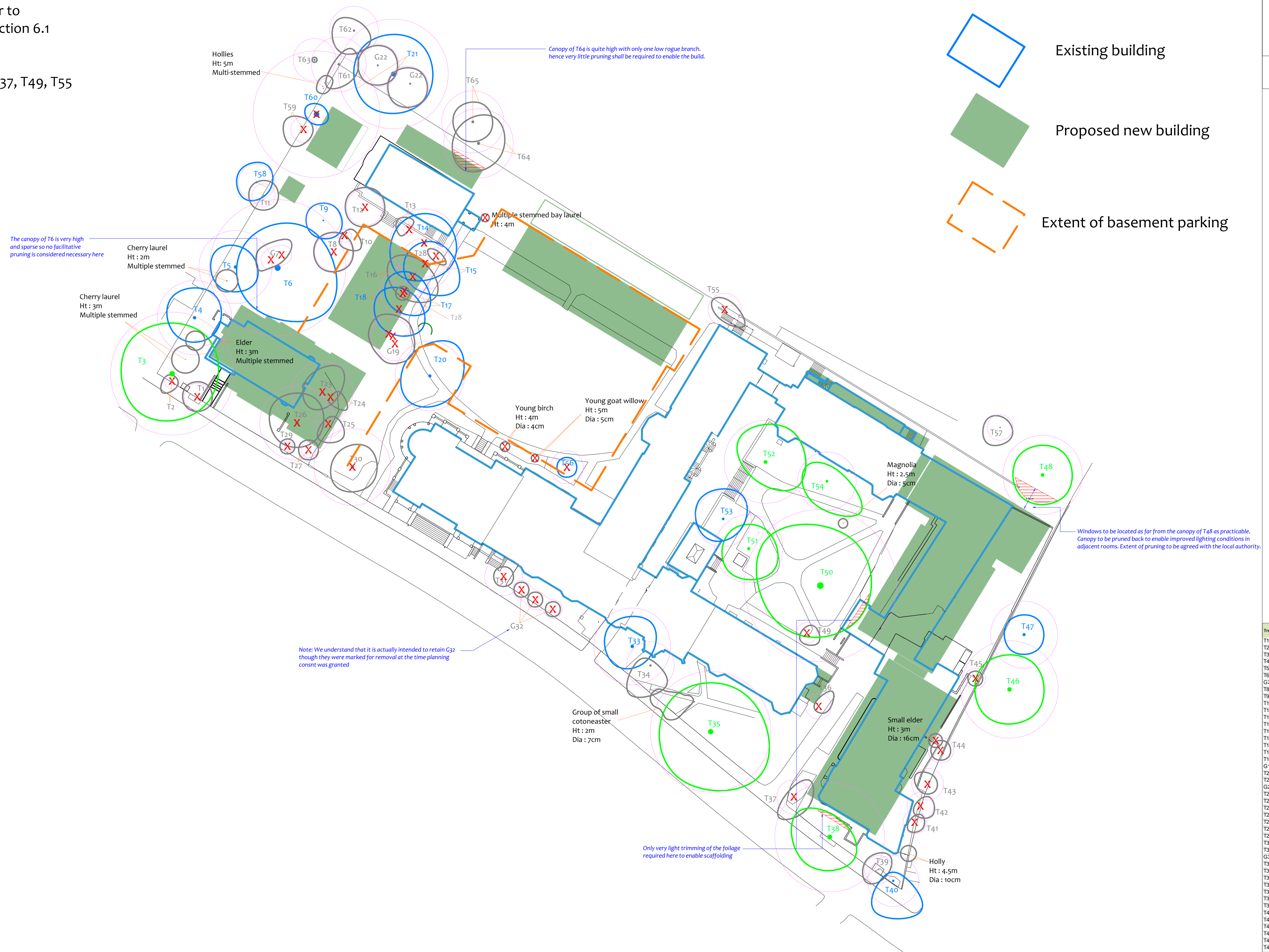


Ammended 21st April 2016.

Trees marked for removal in order to coincide with Section 5.1.7 and Section 6.1 of the accompanying report:

T1, T2, G7, T8, T10, T31, G32, T36, T37, T49, T55



Tree Removal Plan
(Existing Layout with Proposals Overlaid)

Tree Ref.	Species	Height (m)	Radius (m)	Area (sqm)
T1	Cherry	5	2.6	22
T2	Hawthorn	5	1.6	8
T3	Turkey Oak	20	12.1	461
T4	Beech	18	7.3	168
T5	Lime	16	7.2	163
T6	Ash	27	13.4	567
G7	Lime	9	1.9	12
T8	Lawson Cypress	8	3.7	43
T9	Lime	10	3.4	35
T10	Laburnum	5	1.3	5
T11	Lime	9	2.3	16
T12	Fig	6	3.6	41
T13	Fig	5	1.1	4
T14	Silver Birch	21	6.7	142
T15	Silver Birch	17	5.0	80
T16	Rowan	9	3.6	41
T17	Silver Birch	18	4.8	72
T18	Silver Birch	18	5.3	88
G19	Rowan	9	3.4	35
T20	Turkey Oak	15	6.8	147
T21	Ash	19	10.8	366
G22	Sycamore	12	4.2	55
T23	Cherry	8	6.0	113
T24	Silver Birch	10	1.8	10
T25	Cherry	11	2.6	22
T26	Goat Willow	14	7.3	168
T27	Ash	5.5	1.4	7
T28	Holly	5	1.7	9
T29	Oak	4	1.1	4
T30	Silver Birch	14	7.6	180
T31	Holly	5	3.7	43
G32	Holly	4	1.8	10
T33	Maidenhair Tree	16	7.6	180
T34	Pissards Plum	7	4.7	69
T35	Turkey Oak	26	11.9	443
T36	Magnolia	6	2.5	20
T37	Magnolia	5	3.4	35
T38	Lime	19	10.8	366
T39	Lime	4	2.8	24
T40	Ash	15	5.0	80
T41	Holly	6	2.3	16
T42	Elder	8	2.6	22
T43	Holly	7	3.1	31
T44	Holly	5	2.5	20
T45	Holly	4.5	2.0	13
T46	London Plane	18	9.6	290
T47	Leyland Cypress	14	6.6	137
T48	Sycamore	16	7.8	191
T49	Hawthorn	6	2.0	13
T50	Hornbeam	24	15.0	707
T51	Walnut	11	6.7	142
T52	Indian Bean Tree	15	8.2	209
T53	Cherry	11	5.5	96
T54	Cherry	13	5.8	104
T55	Cherry	7	3.2	33
T56	Monkey Puzzle	6	3.2	33
T57	Silver Birch	10	2.5	20
T58	Cherry	14	3.6	41
T59	Ash	9	2.5	20
T60	Lombardy Poplar	20	12.5	489
T61	Ash	14	5.4	92
T62	Sycamore	13	4.8	72
T63	Ash	6	4.2	55
T64	Sycamore	15	6.8	147
T65	Sycamore	14	6.1	118

Drawing No: CCL 09166 / TRP Rev: 14
 Title: Tree Removal Plan
 Site: Kings College London Hampstead Residence NW3 2ST
 Scale: 1:400 Paper Size: A1

Tree Retention Categories

- Category A tree
- Category B tree
- Category C tree
- Category U tree

Trees of high quality with an estimated life expectancy of 40+ years. Usually large trees with significant presence or smaller trees with excellent form. Retention of these trees is highly desirable.

Trees of moderate quality with a life expectancy of 20+ years. Usually maturing trees or younger trees with good form. Retention of these trees is desirable though less than Category A trees.

Unremarkable trees of low quality and merit. Individual specimens are not considered to be a material planning consideration.

Trees unsuitable for retention due to their very poor condition.

Tree Removal Plan

(Existing Layout with Proposals Overlaid)

BS 5837 Root Protection Area (radius = 1xstem diameter)

Root Protection Area needing amendment due to site conditions, e.g. presence of existing road or building.

Root Protection Area having been amended to account for site conditions

T1 = Tree No 1 G2 = Group No 2 H3 = Hedge No 3

Tree to be removed to facilitate the proposal

Tree to be removed due to its low quality

Proposed pruning

MN = Measured North

Canopy spreads are sometimes measured to an approximate N defined by site features. Often more accurate, especially where rows of trees are not aligned N-S or E-W.