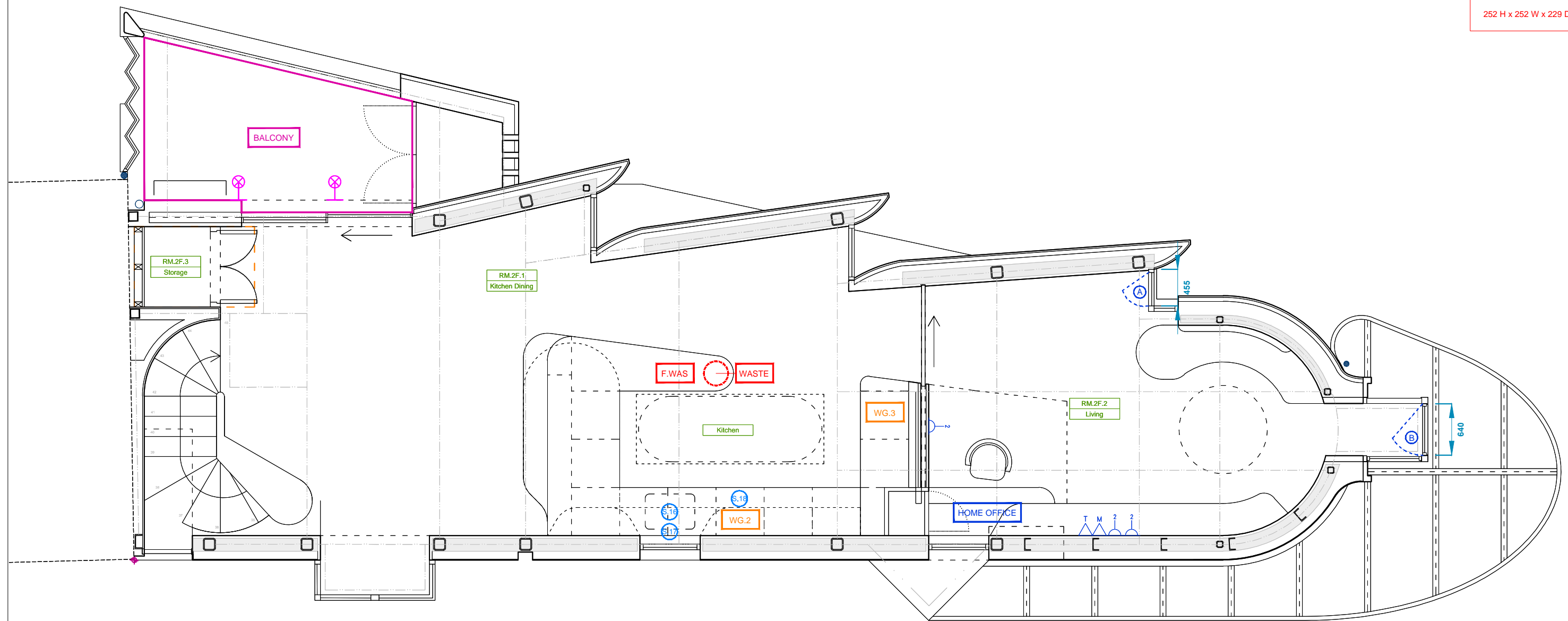


WAS 1 - Waste



Food Waste: 7 litres
Small Kitchen Caddy
(provided by Local Authority)

252 H x 252 W x 229 D

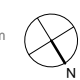


NOTES

This drawing is the property of Birds Portchmouth Russum Architects (copyright reserved). This drawing is not to be copied, reproduced, retained or disclosed to any unauthorised person either wholly or in part without the specific consent in writing of Birds Portchmouth Russum Architects.

- No dimension to be scaled from drawings
- All dimensions to be verified by the contractor before work is commenced

<p>ENE 5 - White Goods</p> <p>WG.2 Siemens dishwasher</p> <p>WG.3 Siemens Fridge / Freezer</p> <p>See SH.2005 White Goods Schedule for technical information</p>	<p>ENE 6 - External Lighting</p> <p>Type J: Bega Stainless Steel Wall Mounted Luminaire w/ Osram Duo daylight/ movement sensor</p> <p>See SH.2006 Electrical Fittings Specification: Luminaires</p>	<p>ENE 9 - Home Office</p> <p>HOME OFFICE</p> <p>2 Double Socket Outlet</p> <p>Telephone Point</p> <p>Modem Point</p>	<p>WAT 1 - Internal Usage</p> <p>§.16 Franke - Kubis Steel Sink</p> <p>§.17 Perin & Rowe Titan Tap</p> <p>§.18 Siemens Dishwasher</p> <p>See SH.2004 Sanitary Schedule for technical information</p>	<p>WAS 1 - Waste</p> <p>Internal Storage</p> <p>WASTE Household Waste Storage</p> <p>F.WAS Food Waste Storage</p> <p>See drawing HG.EW.3030 for External Storage</p>	<p>HEA 3 - Private Space</p> <p>BALCONY</p> <p>Area: 5.7m²</p>
---	--	---	---	---	---

Rev:	Note:	Date:
Drawing Scale:		
0 1m 2m		
Project:	Issue/Date:	
69 Highgate High Street, London	19.5.16	
Drawing:	Status:	
CSH - Plan : +2	Information	
Drawing No:	Scale:	
HG.CSH.004	1:50 @ A3	
BIRDS PORTCHMOUTH RUSSUM ARCHITECTS		
Unit 11, Union Wharf 23 Wenlock Road, London N1 7SB t. 020 7253 8205		