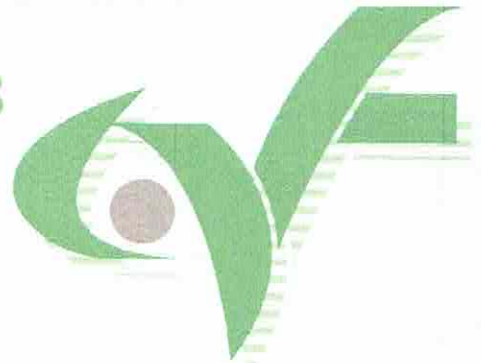


CABINET & TWIN FANS

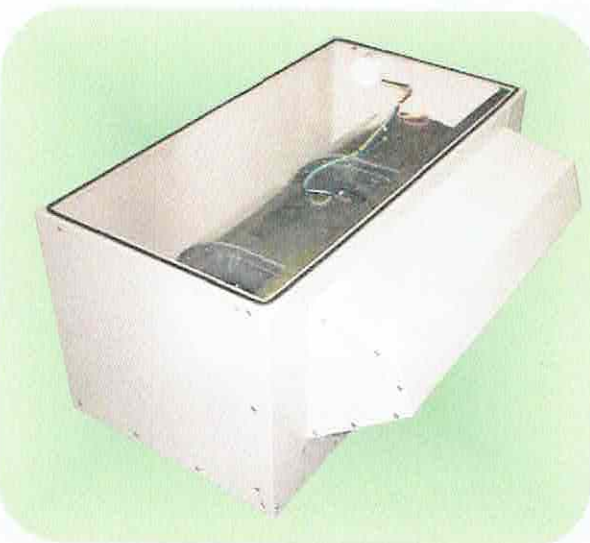
FOR INDUSTRIAL / COMMERCIAL USE

- "QSS" Quiet Duct Centrifugal - Single Fan
- "QST" Quiet Duct Centrifugal - Twin Fan
- "EM" Roof Centrifugal - Single Fan
- "EMT" Roof Centrifugal - Twin Fan
- "QMF" In-Line Mixed Flow
- "PTE" Internal Belt Driven - Twin Fan
- "RTE" Roof Belt Driven - Twin Fan



AIR VENT
TECHNOLOGY

Uniclass L7534





"QMF" - SQUARE CASED MIXED FLOW FANS

"QMF" Range

- 5 sizes - casings from 450 to 700 mm square
- Airflow to 4.17m³/sec - pressure to 600 Pa
- Robust construction with casing in 1mm thick galvanised sheet steel
- Motor is external rotor type, 4 pole, single or three phase (other options available)
- Connections for thermal cut-out protection
- Integral motor/impeller assembly with impeller in polyamide for sizes 350-450 or aluminium for sizes 500 and 560
- Flanged connection for quick and simple installation
- Unique, integral terminal box allows for electrical connections on two sides of casing to ensure flexibility during installation
- Suitable for operation in air temperatures between -10°C and +60°C (Models QMF350/4/1, QMF400/4/1 and QMF450/4/1). Models QMF500/4/1 and QMF560/4/3 suitable for between -10°C and +40°C
- Motor fan assembly IP54 rated
- External models available to order



"QMF" SQUARE CASED MIXED FLOW FANS - TECHNICAL DATA

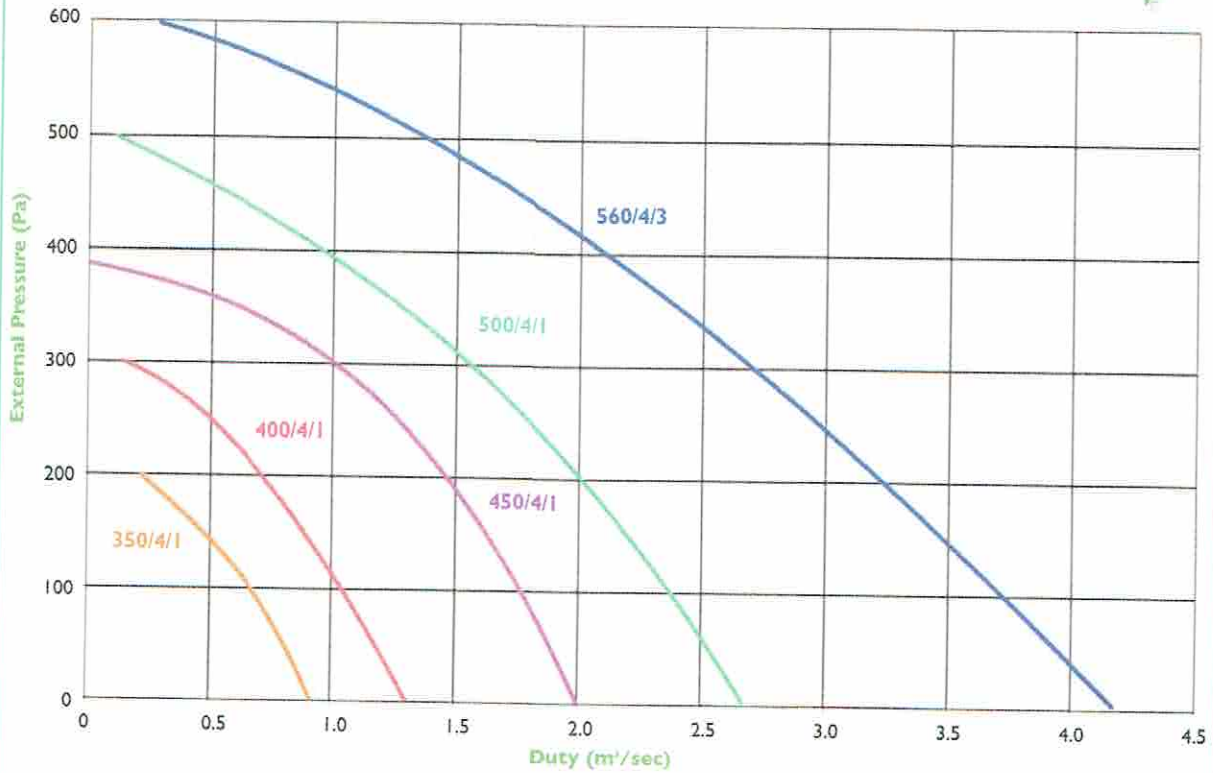
Model	Size		Power Kw	Current amps	SC amps	Speed rpm	Transformer	Sound Level dB A at 3m	Sound Power Levels dB							
	Ins	cm							Mid Octave Bands (Hz)							
									63	125	250	500	1000	2000	4000	8000
QMF350/4/1	14	35	.310	1.35	3.7	1390	QA1.4	53	77	76	74	68	64	62	56	50
QMF400/4/1	16	40	.460	2.0	5.0	1280	QA3	59	83	82	80	74	70	68	62	56
QMF450/4/1	18	45	.910	4.4	9.2	1260	QA5	61	85	84	82	76	72	70	64	58
QMF500/4/1	20	50	1.45	6.1	15.0	1310	QA7	62	86	85	83	77	73	71	65	59
QMF560/4/3	22	56	2.40	4.3	20.0	1350	RTR07	69	93	92	90	84	80	78	72	66

"QMF" SQUARE CASED MIXED FLOW FANS - PERFORMANCE

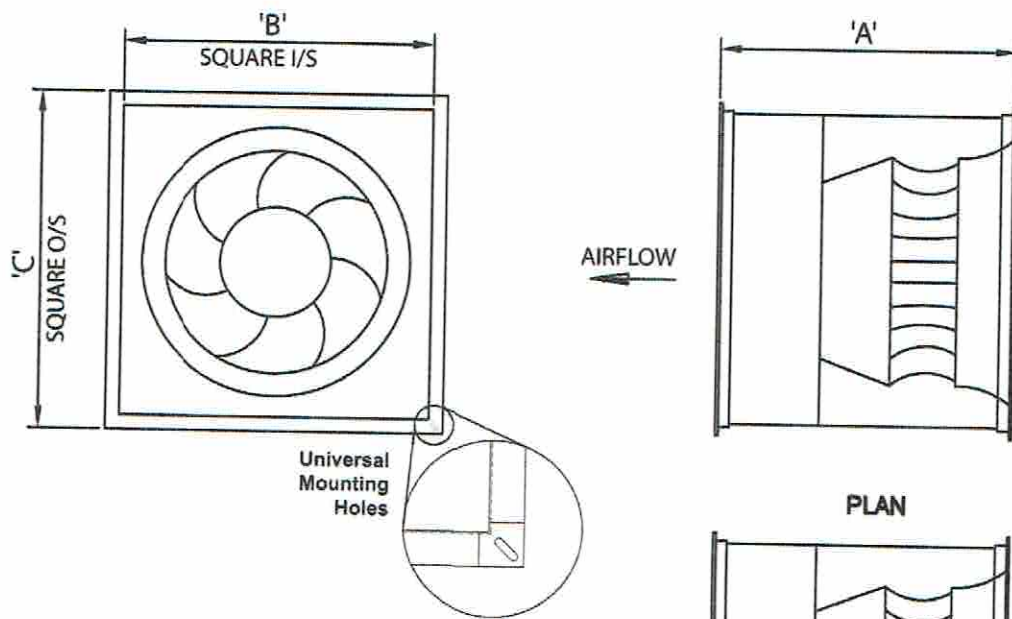
Model	Max m ³ /hr	Max cfm	m ³ /sec at Pa													
			0	50	100	150	200	250	300	350	400	450	500	550	600	
QMF350/4/1	3312	1954	0.92	0.81	0.67	0.47	0.22	-	-	-	-	-	-	-	-	
QMF400/4/1	4716	2782	1.31	1.17	1.06	0.89	0.69	0.52	0.14	-	-	-	-	-		
QMF450/4/1	7200	4248	2.00	1.88	1.79	1.61	1.48	1.25	1.02	0.61	-	-	-	-		
QMF500/4/1	9612	5671	2.67	2.56	2.35	2.20	2.00	1.81	1.59	1.28	0.94	0.56	0.11	-		
QMF560/4/3	15012	8857	4.17	3.96	3.75	3.51	3.23	2.95	2.67	2.43	2.12	1.80	1.41	0.83	0.28	



“QMF” - PERFORMANCE CURVES & DIMENSIONS



“QMF” MIXED FLOW FANS - DIMENSIONS (mm)



Model	A	B	C	Kg
QMF350/4/1	400	450	500	18
QMF400/4/1	435	500	550	26
QMF450/4/1	505	550	620	35
QMF500/4/1	535	661	731	45
QMF560/4/3	570	700	770	54