



Figure 5.1



Figure 5.2

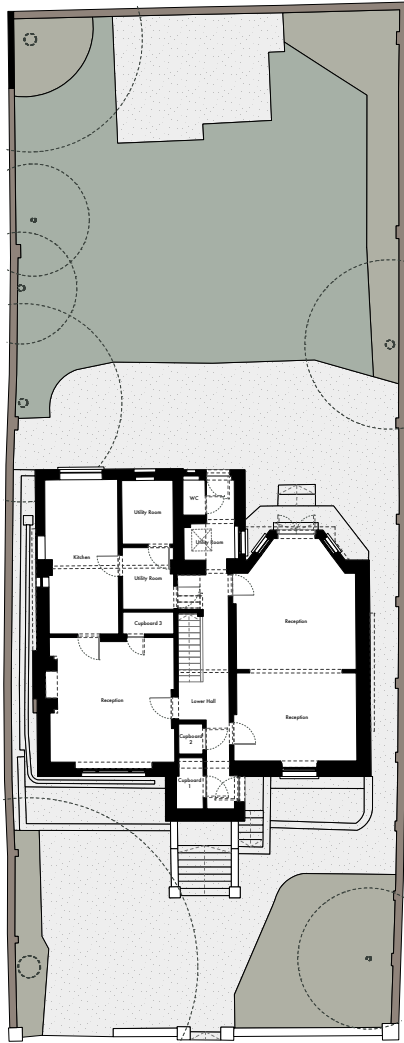


Figure 5.3

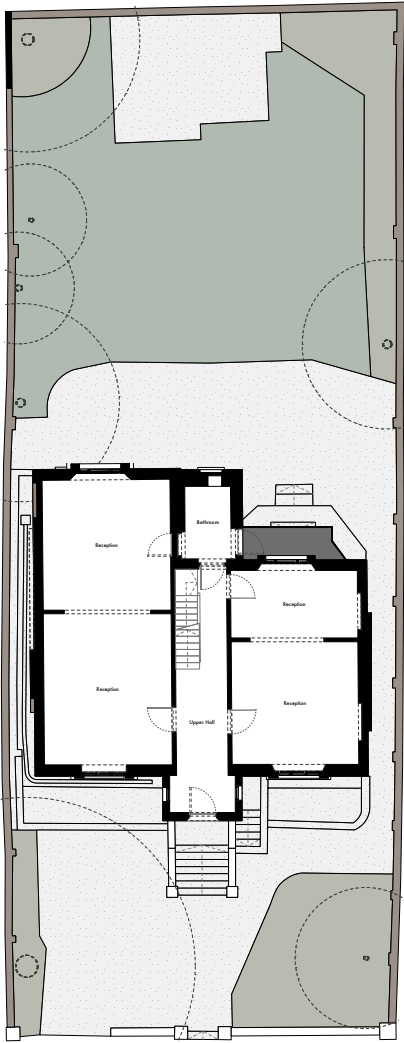


Figure 5.4

Present Day

40 Camden Square is one of a few detached single dwelling properties which remains on the Square. The house is accessible from the South sidewalk of Camden Square and has a large front garden, although mainly paved with poor quality concrete build ups. The rear garden is lush, but in great need of new drainage and maintenance.

The houses has some of it's original features intact, or possibly re-constructed, but also a few non-original features breaking the continuity. There has been alterations to the rear facade, details such as extra glazing set outside of the existing windows, which are undesirable. The rear also features some unoriginal bars over a lower ground floor door. These types of bars also exist behind a door on lower ground floor on the front facade, but are not visible from the street.

The majority of the rooms of the house are very spacious and bright. A few though are not usable as bedrooms (owing to their size), and have formerly been used as storage, despite their delightful outlook. The lower ground floor is currently usable, but not very enjoyable, since the light is limited and many of the rooms are used for storage and plant. The kitchen is located on the lower ground floor, but is currently relatively small for the size of the property.

There is a balcony located at the rear of the house which sits above a minor extension from the lower ground floor bedrooms, however it is not particularly accessible or usable, the only door leading from a bathroom.

The overall internal condition of the house is poor with many damaged windows and decrepit walls, and is therefore in great need of renovation.

**Figure 5.1** Existing Front Elevation **Figure 5.2** Existing Back Elevation **Figure 5.3** Existing Lower Ground Floor Plan **Figure 5.4** Existing Upper Ground Floor Plan **Figure 5.5** View showing existing rear of house. **Figure 5.6** View showing the typical type of internal damages.

Figure 5.5



Figure 5.6

