

Figure 8.1



Figure 8.2



Figure 8.3



Demolition & Construction

The front wall will be demolished and rebuilt in a style more in keeping with neighboring properties. The old and damaged plywood gates which are currently blocking the view of the back garden will be removed and replaced by secure and well designed new gates.

The main part of the demolition of the actual house will take place in the rear elevation, where new glazing, The Palm House and a minor extension are proposed. The demolition is therefore limited to unoriginal or poorly refurbished elements of the house.

Since the proposed layout features some new partitions, a few internal walls need to be taken down, some doorways need to be blocked up and some new doorways opened up. The house is not listed, however demolition has been purposefully minimized.

Figure 8.1 Photo showing the right hand side of the back garden and it's current hard standing.**Figure 8.2** Photo showing the existing hard standing, lightwell and lawn of the right hand side front garden. **Figure 8.3** Photo showing the existing left hand side light well for the current extension. **Figure 8.4** Rear elevation demolition drawing. **Figure 8.5** Rear elevation construction drawing. **Figure 8.6** Lower Ground Floor Plan and Garden demolition drawing. **Figure 8.7** Lower Ground Floor Plan and Garden construction drawing.

Undercover

Figure 8.4

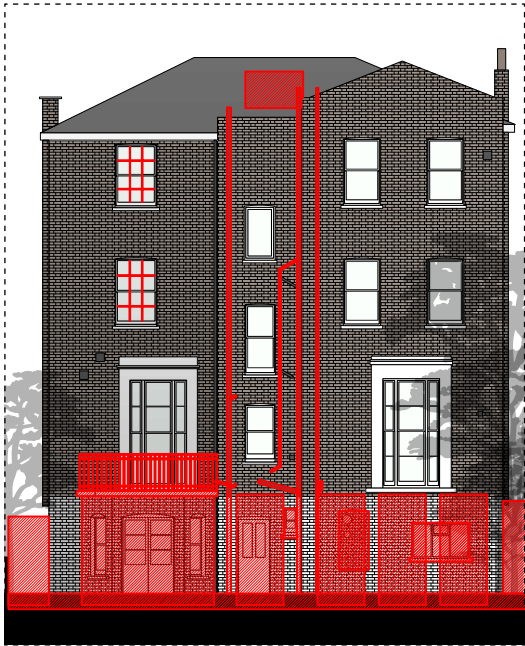


Figure 8.5



Figure 8.6

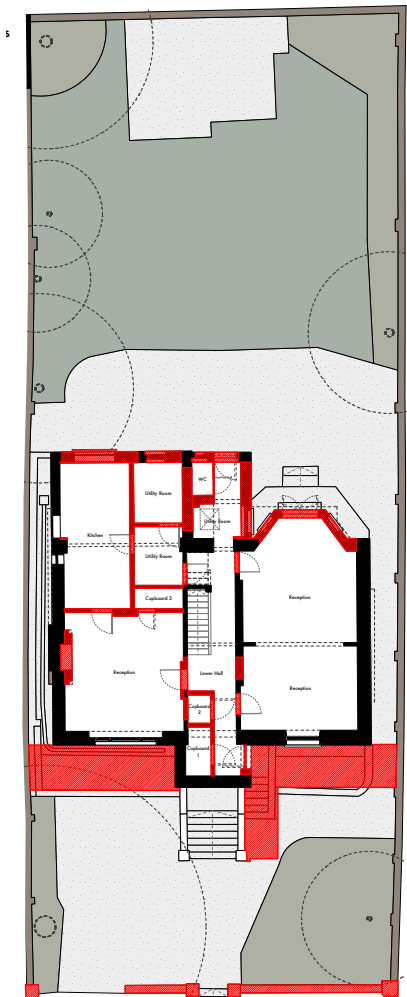


Figure 8.7

