

**SPECIFICATION NOTES**

Plant Material and Workmanship to be in accordance with MCA Landscape Specification and the following British Standards;

a) BS 8545:2014 Trees: from nursery to independence in the landscape. Recommendations.

b) All trees, shrubs and hedge plants supplied shall comply with the requirements of British Standard 3936, Specification for Nursery Stock.

c) All pre-planting site preparation, planting and post-planting maintenance works shall be carried out in accordance with the requirements of British Standard 4428(1989) Code of Practice for General Landscape Operations (excluding hard surfaces).

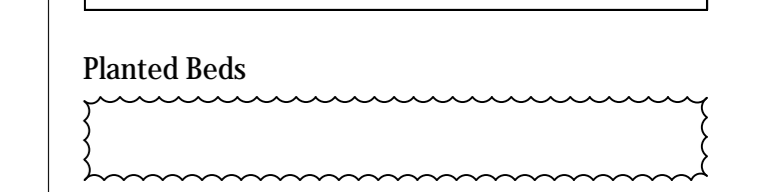
d) The use of chemicals (herbicides, insecticides, fungicides and slug pellets etc) is discouraged and all substances used shall be biodegradable and non-residual.

e) The use of chemical fertilisers is discouraged and preference would be for well-rotted manure to be used instead.

f) Soil conditioners, mulches etc. shall be peat free.

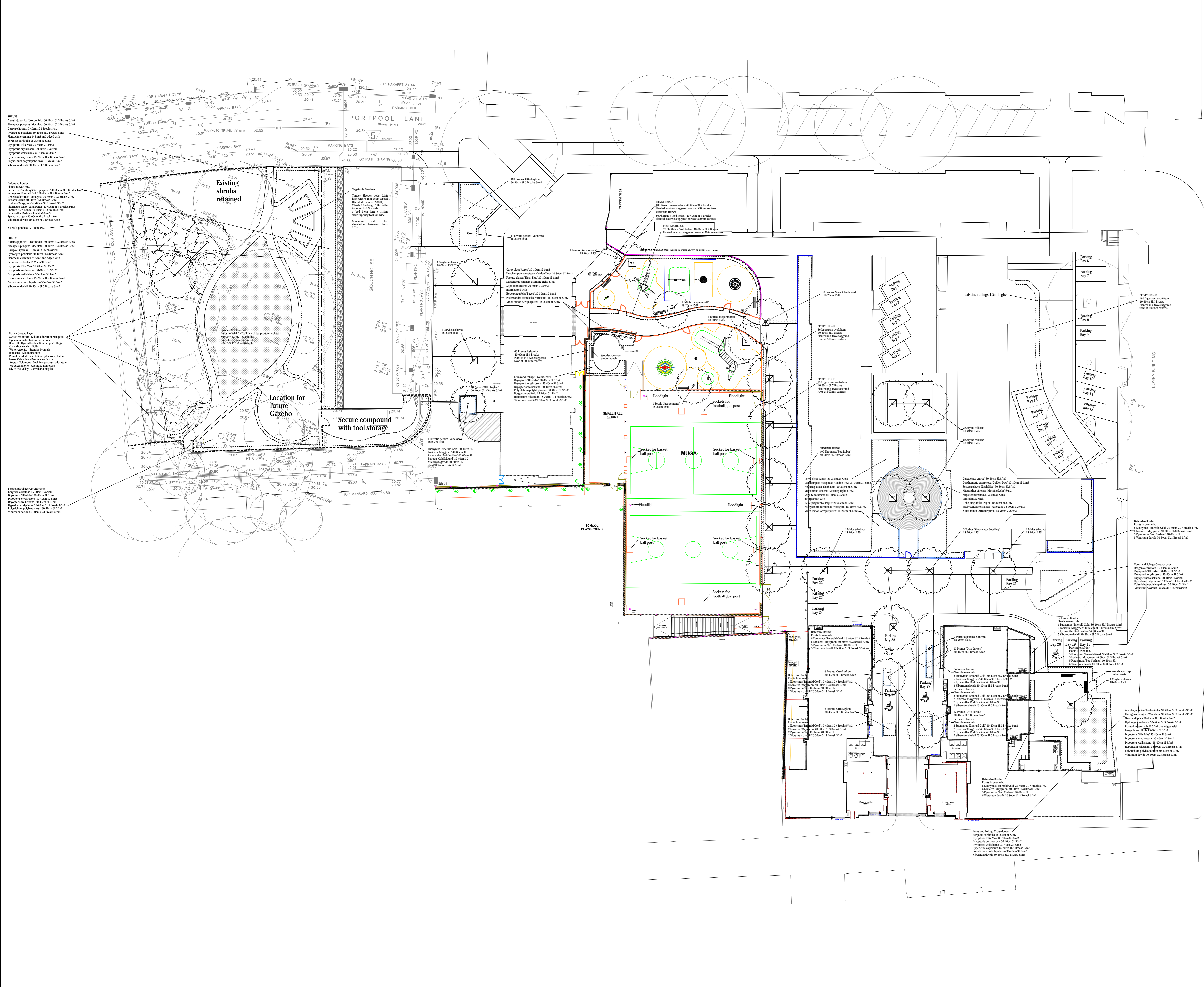
**KEY**

- Tree Pit in Paved Area
- Greenblue Urban Pit GR1011 (Without Tree Guard)
- RRARBYVIC Arborvitae single inlet aeration/irrigation system with cast inlet.
- GLECMA Root Cells. 144 No. 250mm x 250mm x 90mm (3.6m<sup>3</sup> Root Cell volume) Cells filled with topsoil to BS822.
- GLTWGNA twinwall geonet - 4m<sup>2</sup>.
- ARBP12A Pre-cast Arborvitae bound stone tree grille. 1200mm x 1200mm x 50mm thick in two halves, with galvanneal steel support frame. RD1050A Root Director. GLGTTA Tree guard tie.
- SASLP Arbory strapped anchor system - Large (Special drive rod required for SASLP installation)
- Tree in 1.2m x 1.2m x 600mm deep pit backfilled in layers with topsoil.
- Species Rich Turf and bulbs mown to 50mm minimum height



**REVISIONS**

- Rev A: 27/05/15 Comments from Carrie-Ann Arnold/LBC incorporated as follows: Ivy removed from woodland ground layer and alternative bulbs/plugs proposed.
- Rev B: 09/10/15 Layout updated.
- Rev C: 10/12/15 Comprehensive revisions following Camden Council review meeting on site.
- Rev D: 11/12/15 Play equipment deleted and parking altered.
- Rev E: 29/01/16 MUGA entrance ramp from play area updated.
- Rev F: 21/03/16 Play equipment added from manufacturer, trees added to play area, parking bay numbers added.
- Rev G: 03/05/16 Play area seating area redesigned with additional planting. Bench added to south play area and benches moved to avoid hedges. Wall flanking MUGA/Play Area ramp lowered.
- Rev H: 20/05/16 Central trees relocated and doubled up to avoid existing services.



**MCA**  
Landscape Architects

www.mcalandscape.co.uk  
Tel: (01993) 811888 Mob: 07831 248130

**Higgins**  
Construction  
BOURNE ESTATE  
GRAYS INN ROAD  
PLANTING PLAN

1:200 20/04/15 MCA

MCA 0415/06H