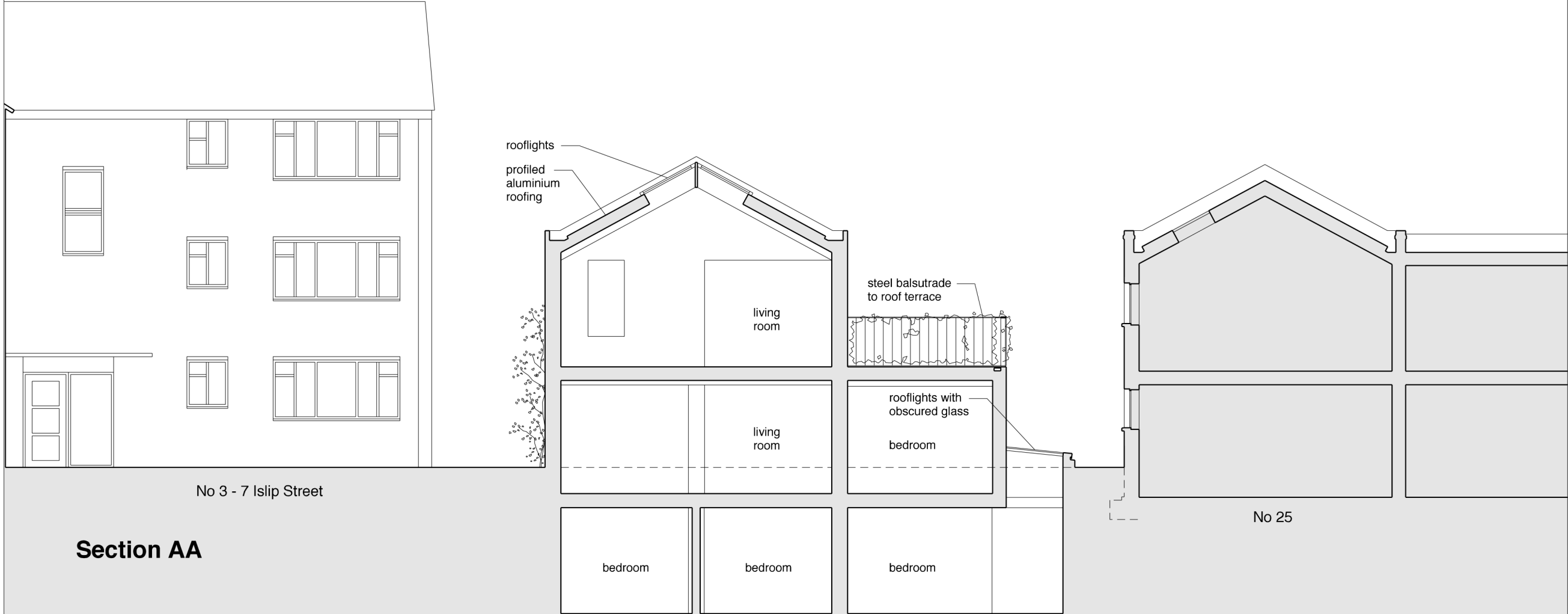


Copyright Burd Haward Architects.  
 Unless otherwise stated,  
 this drawing is for information only.  
 Do not scale from this drawing except for  
 planning purposes.  
 All dimensions to be checked on site.



No 3 - 7 Islip Street

No 25

**Section AA**

C	24.03.16	CB	BH
Basement of Unit 2 extended and rear of unit revised			
B	20.06.15	CB	BH
Revised for Planning Issue			
A	19.05.15	CB	BH
Elevations revised			
Revision	Date	By	Checked



No 3 - 7 Islip Street

No 25

**West Elevation**

sliding steel grille  
 Unit 1 entrance (No 23)  
 Unit 2 entrance (No 24)  
 sliding steel grille

For  
 Planning

**Proposed Section AA &  
 West Elevation**

Wolsey Mews Garages  
 London NW5 2DX

**1590\_P05\_C**

Scale: 1:100 at A3  
 Date: 24/03/15  
 Drawn: BH

**BHA**

**BURD HAWARD ARCHITECTS LTD**  
 United House, North Road  
 London, N7 9DP  
 T +44 20 7267 9815  
 E studio@burdhaward.com