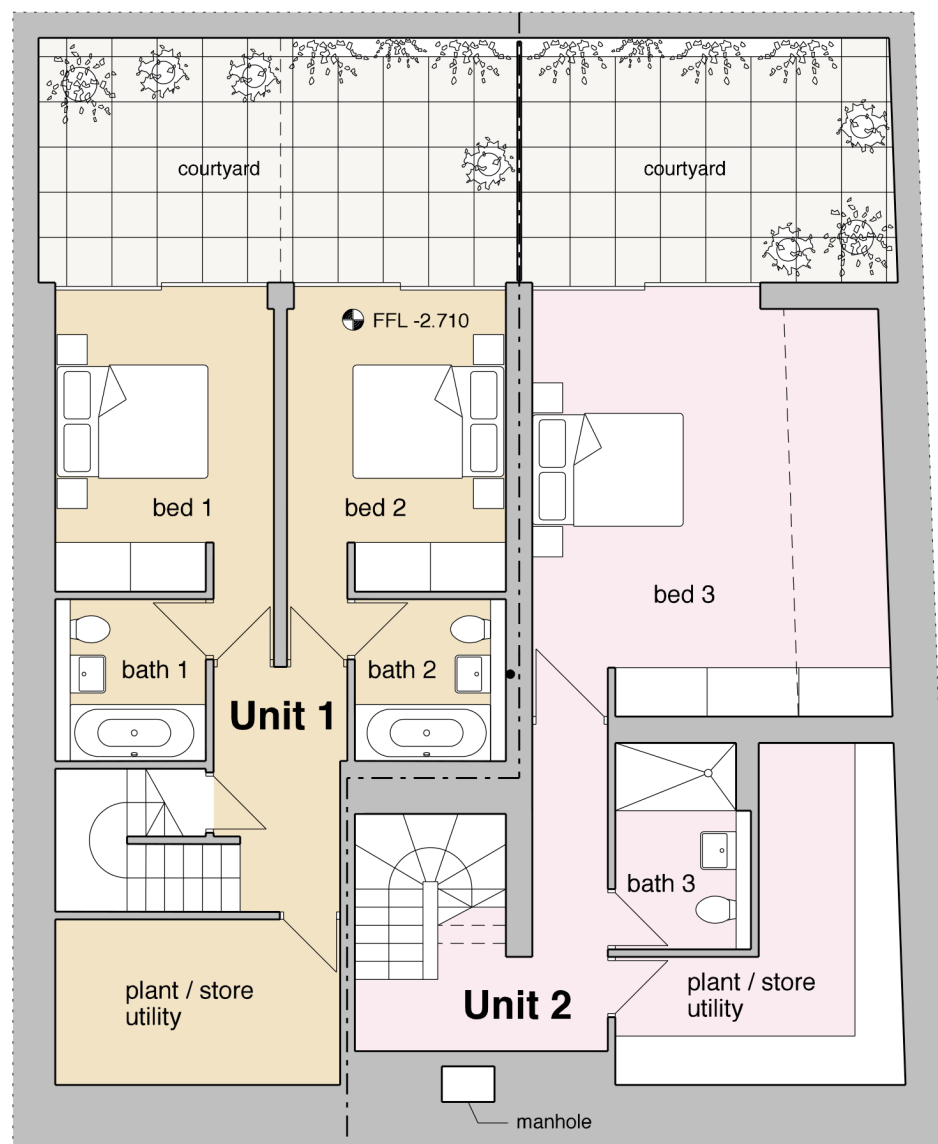


Copyright Burd Haward Architects.  
 Unless otherwise stated,  
 this drawing is for information only.  
 Do not scale from this drawing except for  
 planning purposes.  
 All dimensions to be checked on site.

No.s 3-7 Islip  
 Street above

**AI**



**IA**

No. 25 above

WOLSEY MEWS



Revision	Date	By	Checked
D	24.03.16	CB	BH
Basement of Unit 2 extended			
C	20.06.15	CB	BH
Revised for Planning Issue			
B	19.05.15	CB	BH
Stair & bin store amended			
A		CB	BH
Internal layout amended			

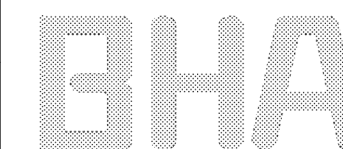
For  
 Planning

**Proposed Basement  
 Plan**

Wolsey Mews Garages  
 London NW5 2DX

**1590\_P01\_D**

Scale: 1:100 at A3  
 Date: 24/03/15  
 Drawn: BH



**BURD HAWARD ARCHITECTS LTD**  
 United House, North Road  
 London, N7 9DP  
 T +44 20 7267 9815  
 E studio@burdhaward.com