

Typical Section of External Wall with Cast in channel masonry support system (Stretcher Bond & Soldier-Course Stack Bond) & Separating Floor between Flat to Flat

1
1:5

Masonry Wall Tie Spacing

| Distance along wall | Horizontal Spacing | Vertical Spacing |
|--|--------------------|------------------|
| | Max. 900mm | Max. 450mm |
| Distance from Openings, Roof Verges, Movement Joints | Max. 225mm | Max. 300mm |

Note: Wall ties along wall may correspond to table above or alternatively be spaced such as not to be less than 2.5 ties/m². Wall ties to be installed to manufacturer instructions

| PROPOSED U-VALUE TO ACHIEVE | |
|---|---|
| Ground Floor | 0.11 W/m ² .K |
| External Wall - Brickwork with Mestic | 0.10 W/m ² .K |
| External Wall - Brickwork with Blockwork | 0.11 W/m ² .K |
| Separating Walls: Flat / Communal Areas | TBC |
| Separating Walls: Flat / Lift Shaft | TBC |
| Separating Walls: Flat / Flat Party Walls | 0.0* |
| Roof | 0.11 W/m ² .K |
| External Opaque Doors | 1.0 W/m ² .K |
| External Windows | 1.5 W/m ² .K (g-value of 0.63) |
| External Glazed Doors | 1.5 W/m ² .K (g-value of 0.63) |
| AIR PREMEABILITY | 4m ³ /m ² .h |

* Cavities to be fully filled with mineral wool

ALL JUNCTIONS BETWEEN INTERNAL CEILING & INTERNAL WALLS AND PENETRATIONS IN AIR BARRIER TO BE SEALED WITH FLEXIBLE SEALANT.

ALL PLASTERBOARD JOINT LOCATIONS TO BE TAPED AND JOINT FINISH.

ALL PLASTERBOARD ON DABS TO HAVE CONTINUOUS RIBBON OF ADHESIVE AROUND ALL OPENINGS, ALONG TOP AND BOTTOM OF WALL, AND AT INTERNAL AND EXTERNAL CORNERS.

DETAILS TO BE READ IN CONJUNCTION WITH SECTIONS & GA PLANS - REFER TO SUITABLE PLASTERBOARD TYPE.

NOTE

Wall tie setouts shown indicatively. Set outs & distances between ties to be installed as per manufacturer instructions

All dimensions to be verified on site by Main Contractor before the start of any shop drawings or work whatsoever either on their own behalf or that of sub-contractors.

Report any discrepancies to the Contract Administrator at once.

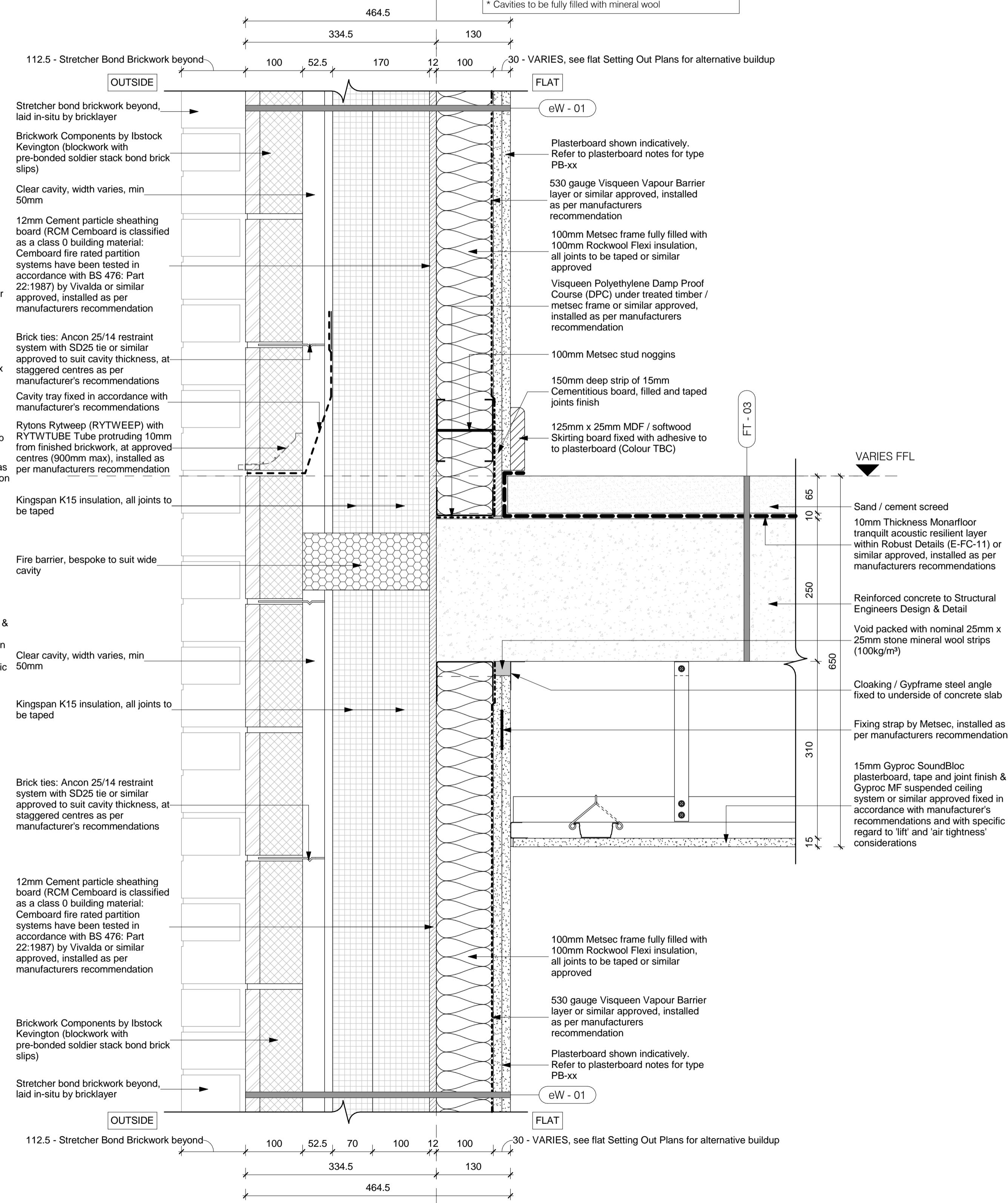
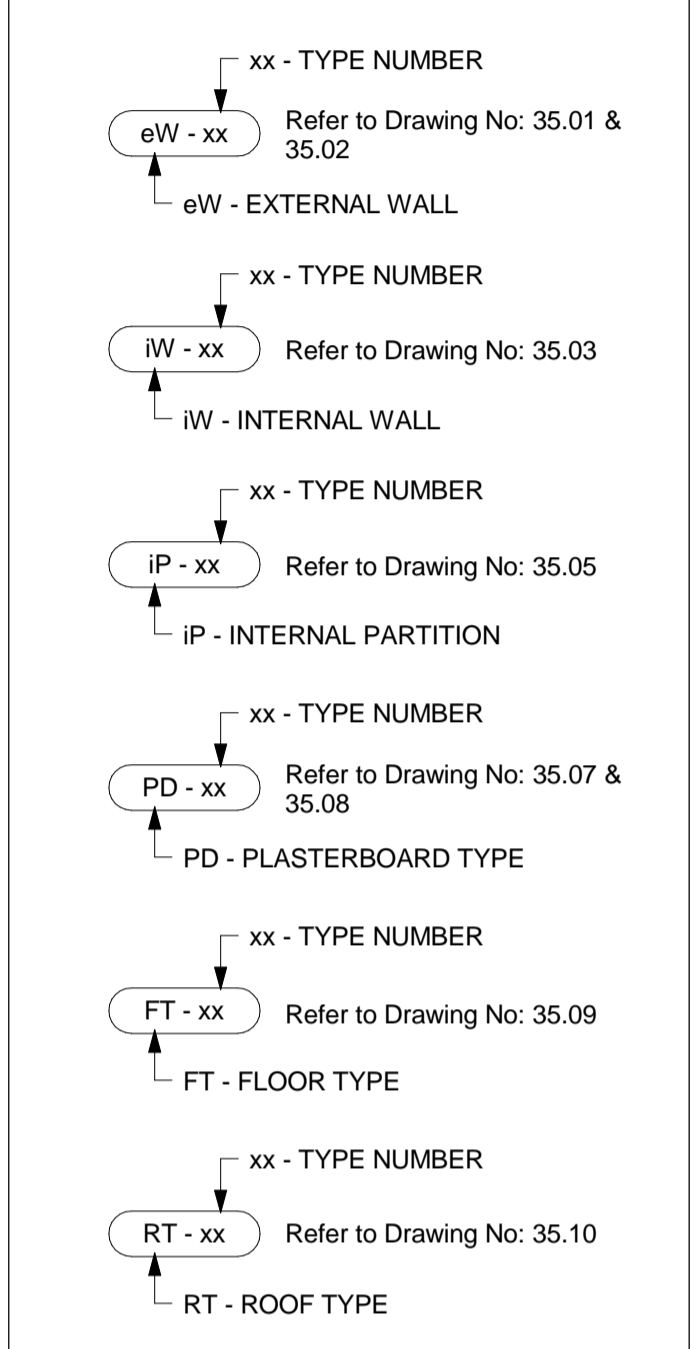
This drawing is to be read with all relevant Architect's and Engineer's drawings and other relevant information.

© Ingleton Wood LLP

LEGEND: DO NOT SCALE

GENERAL NOTES
This drawing should be read in conjunction with all relevant consultants drawings and specifications.
Setting out dimensions and sizing of all RC elements should be taken from structural engineer's drawings and documentation.

EXTERNAL & INTERNAL WALL SYMBOLS



Typical Section of External Wall (Soldier-Course Stack Bond) & Separating Floor between Flat to Flat

2
1:5

| | | | | |
|-------------|-------------------|---|--------|-------------|
| B | 22.04.16 | Amended in line with comments by Lovell | KP | JR |
| A | 15.04.16 | First Issue & Construction Issue | KP | JR |
| Rev: | Date: | Description: | Chk: | Apr: |
| Scale @ A1: | 1:5 | Issuing Office: | London | Project No: |
| | | | | 84923 |
| Status: | Purpose of Issue: | | | |
| S4 | Construction | | | |

Ingleton Wood
Vision, form and function

London
1 Alle Street
London E1 8DE

Billericay
Cambridge
Colchester
London
Norwich

T: 020 7680 4400
www.ingletonwood.co.uk

Project:
Regents Park Estate
Plot 2 - Rydal Water Open Space
London
NW1 3EE

Drawing Title:
External Wall Details - Sheet 07

Client:
Lovell Partnership Ltd.

| | | | |
|-----------|--------------------------------------|-----------|---|
| File Ref: | RWOS - IW - XX - ZZ - DR - A - 35.47 | Revision: | B |
|-----------|--------------------------------------|-----------|---|