

Masonry Wall Tie Spacing		
	Horizontal Spacing	Vertical Spacing
Distance along wall	Max. 900mm	Max. 450mm
Distance from Openings, Roof Verges, Movement Joints	Max. 225mm	Max. 300mm

Note: Wall ties along wall may correspond to table above or alternatively be spaced such as not to be less than 2.5 ties/m<sup>2</sup>. Wall ties to be installed to manufacturer instructions

ALL JUNCTIONS BETWEEN INTERNAL CEILING & INTERNAL WALLS AND PENETRATIONS IN AIR BARRIER TO BE SEALED WITH FLEXIBLE SEALANT.

ALL PLASTERBOARD JOINT LOCATIONS TO BE TAPED AND JOINT FINISH.

ALL PLASTERBOARD ON DABS TO HAVE CONTINUOUS RIBBON OF ADHESIVE AROUND ALL OPENINGS, ALONG TOP AND BOTTOM OF WALL, AND AT INTERNAL AND EXTERNAL CORNERS.

DETAILS TO BE READ IN CONJUNCTION WITH SECTIONS & GA PLANS - REFER TO SUITABLE PLASTERBOARD TYPE.

**NOTE**

Wall tie setouts shown indicatively. Set outs & distances between ties to be installed as per manufacturer instructions

**PROPOSED U-VALUE TO ACHIEVE**

Ground Floor	0.11 W/m <sup>2</sup> .K
External Wall - Brickwork with Mestic	0.10 W/m <sup>2</sup> .K
External Wall - Brickwork with Blockwork	0.11 W/m <sup>2</sup> .K
Separating Walls: Flat / Communal Areas	TBC
Separating Walls: Flat / Lift Shaft	TBC
Separating Walls: Flat / Flat Party Walls	0.0*
Roof	0.11 W/m <sup>2</sup> .K
External Opaque Doors	1.0 W/m <sup>2</sup> .K
External Windows	1.5 W/m <sup>2</sup> .K (g-value of 0.63)
External Glazed Doors	1.5 W/m <sup>2</sup> .K (g-value of 0.63)

AIR PREMEABILITY 4m<sup>3</sup>/m<sup>2</sup>.h

\* Cavities to be fully filled with mineral wool

All dimensions to be verified on site by Main Contractor before the start of any shop drawings or work whatsoever either on their own behalf or that of sub-contractors.

Report any discrepancies to the Contract Administrator at once.  
This drawing is to be read with all relevant Architect's and Engineer's drawings and other relevant information.  
© Ingleton Wood LLP

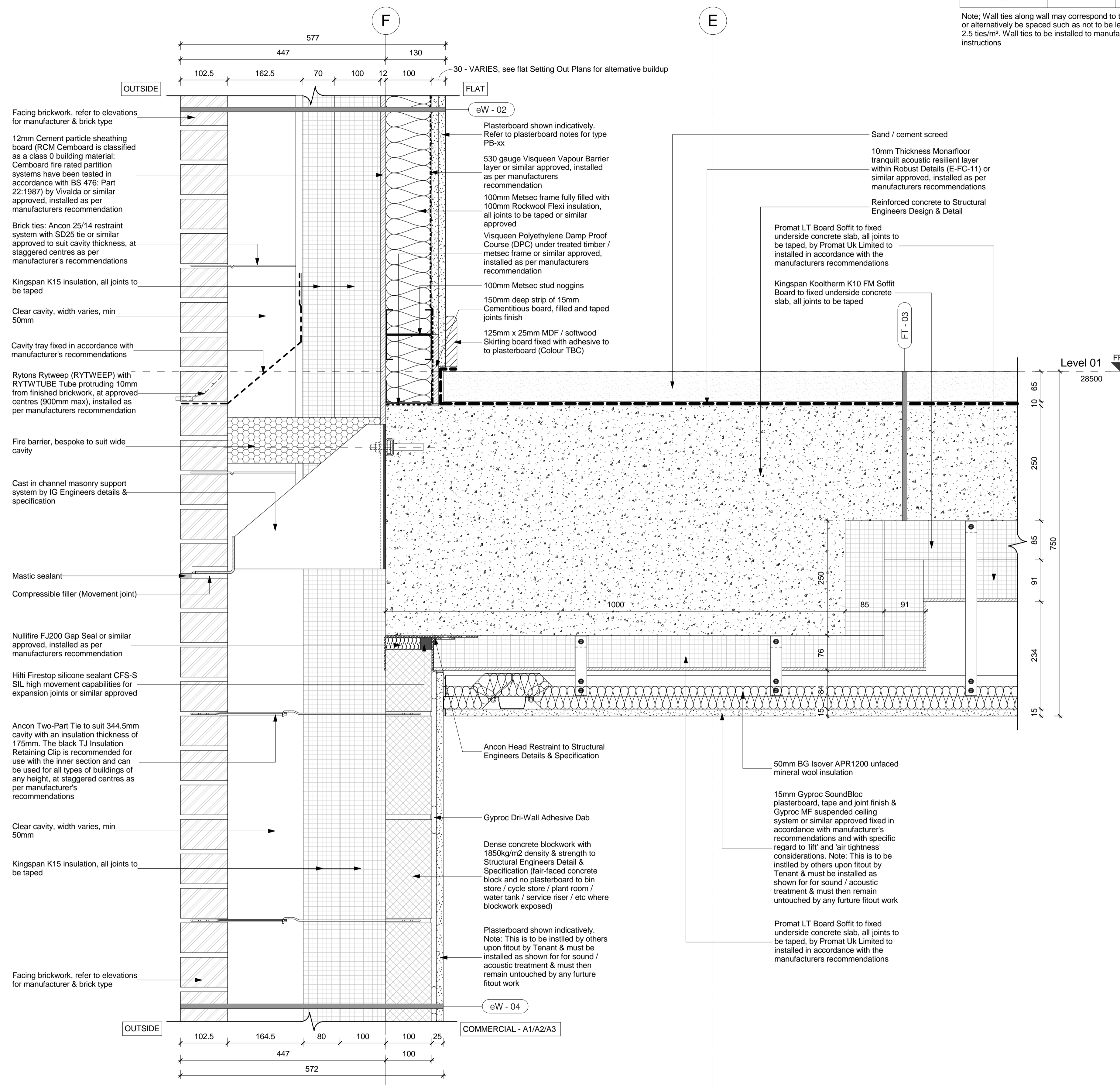
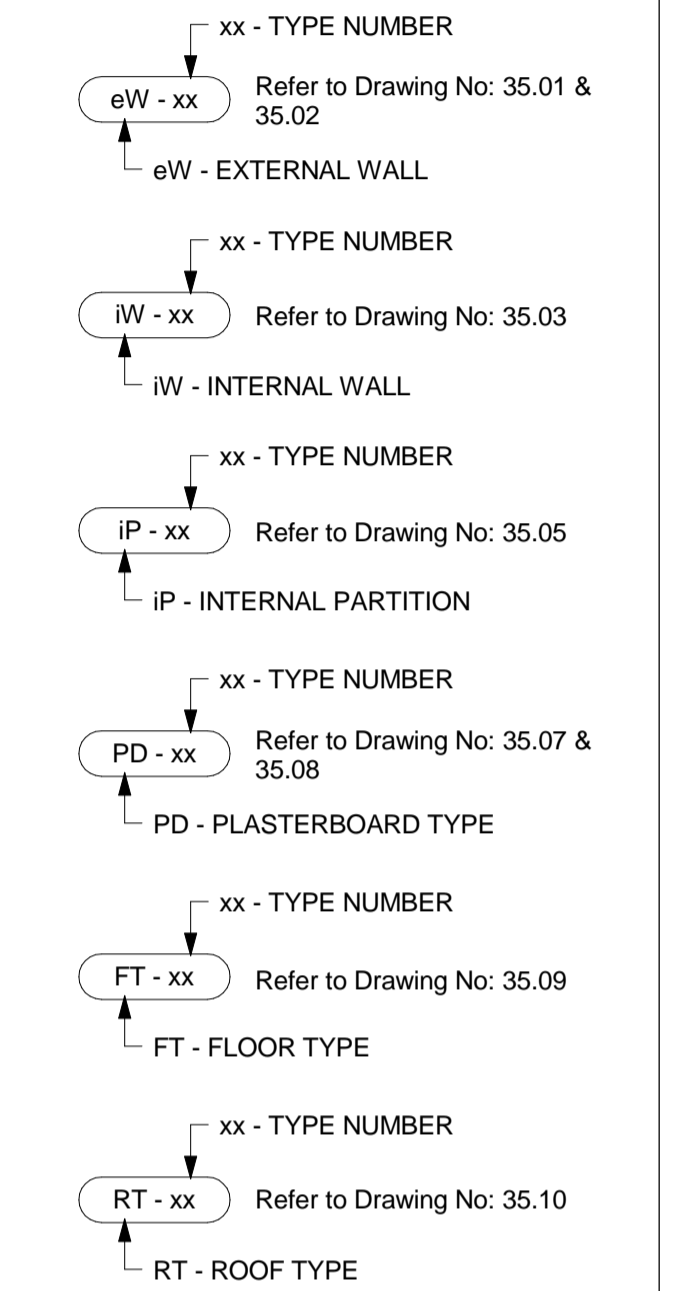
LEGEND: DO NOT SCALE

**GENERAL NOTES**

This drawing should be read in conjunction with all relevant consultants drawings and specifications.

Setting out dimensions and sizing of all RC elements should be taken from structural engineer's drawings and documentation.

**EXTERNAL & INTERNAL WALL SYMBOLS**



Section of External Wall with Cast in channel masonry support system (Stretcher Bond), Slab Edge Detail & Separating Floor between Commercial to Flat

1 1:5

Rev	Date	Description	Chk	Apr
C	22.04.16	Amended in line with comments by Lovell	KP	JR
B	15.04.16	Construction Issue	KP	JR
A	15.02.16	First Issue	ET	JR

Scale @ A1: 1:5  
Issuing Office: London  
Project No: 84923  
Status: S4  
Purpose of Issue: Construction

**Ingleton Wood**  
Vision, form and function

**Billericay**  
**Cambridge**  
**Colchester**  
**London**  
**Norwich**

London  
1 Alie Street  
London E1 8DE  
T: 020 7680 4400  
www.ingletonwood.co.uk

Project:  
Regents Park Estate  
Plot 2 - Rydal Water Open Space  
London  
NW1 3EE

Drawing Title:  
External Wall Details - Sheet 02

Client:  
Lovell Partnership Ltd.

File Ref	Revision
RWOS - IW - XX - ZZ - DR - A - 35.42	C