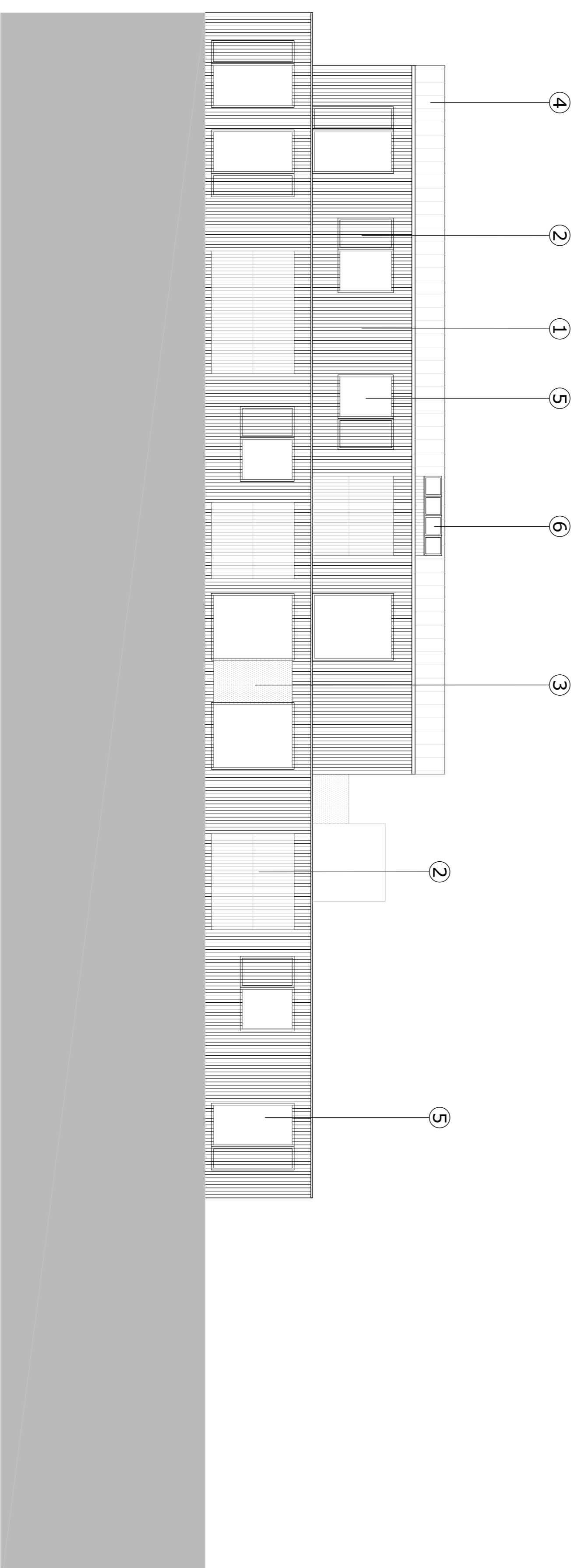


Proposed Front Elevation



Proposed Rear Elevation

- Proposed Material Key
- |                            |                                  |
|----------------------------|----------------------------------|
| No. Type                   |                                  |
| 1. Black timber cladding   | 5. Black aluminium window frames |
| 2. Stained black timber    | 6. Black velux windows           |
| 3. Perforated corten steel | 7. Black aluminium door frames   |
| 4. Black Zinc              |                                  |

- 3 Floor level
- 2nd Floor level
- 2 Floor level
- 1st Floor level
- 1 Floor level
- G Floor level

Rev.	Description	Date	By
P1	Issued for Planning as MMA	17/05/16	CK
P2	Issued for Planning as PMA	20/05/16	CK

©Lynas Smith 2015  
 Do not reproduce without permission of  
 Lynas Smith  
 This drawing has been produced for Client  
 MMA(10)300\_P1  
 Other persons of for any other purposes.  
 Original drawing 1s A1. Do not scale from this  
 drawing.

Planning

45 Holmes Road  
 Titra Properties Limited and 160 Iverson Limited

Proposed Elevations

Drawn By: CK  
 Project No: 1602  
 Reviewed by: KS

1:100 @A1  
 MMA(10)300\_P1

