



Addendum for Listed Building Consent and Planning Applications for proposals to No. 8 Gainsborough Gardens:
Change of use from 3 flats to single-dwelling house with associated alterations
Ref. 2016/2777/NEW & 2016/2902/L

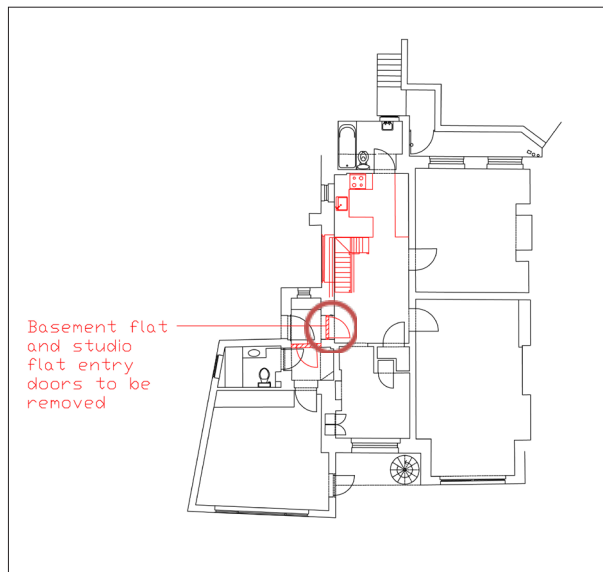
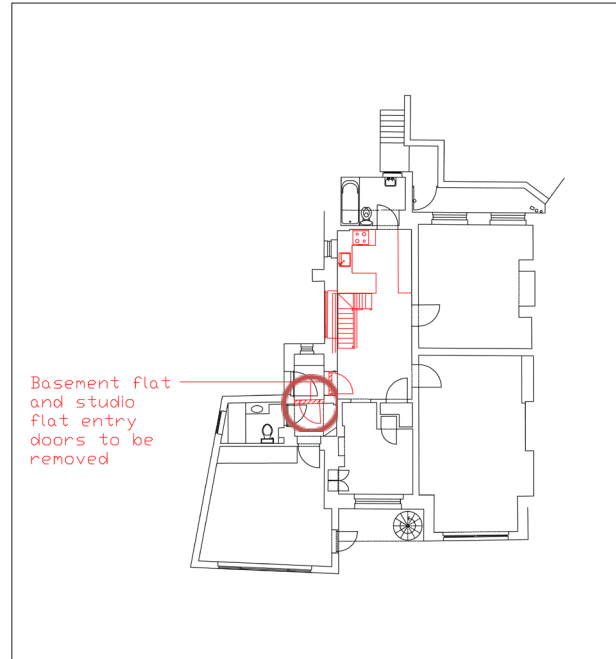


Figure 1: Existing entry door to basement flat to be removed and replaced with a new door to match existing historic ones on the same level. (See figure 2 below)



Figure 2: Existing historic door at lower ground floor level. The proposed new door to replace the basement flat entry door is to exactly match figure 2 in detail and materials.



Basement flat
and studio
flat entry
doors to be
removed

Figure 3: This door and surrounding nibs are later additions from when the 1970s extension was built. Door and nibs are proposed to be removed.



Figure 4: Studio flat entry doorway to the left.



Figure 5: Basement flat entry doorway to the left and studio flat entry door to the right.

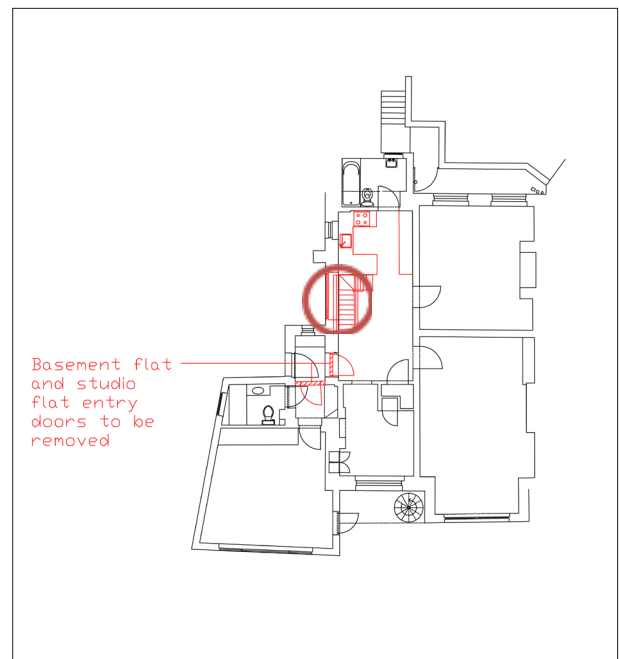


Figure 6: Internal elevation of 1950s window. This is the proposed window re-installation area at lower ground floor level (within the basement flat).