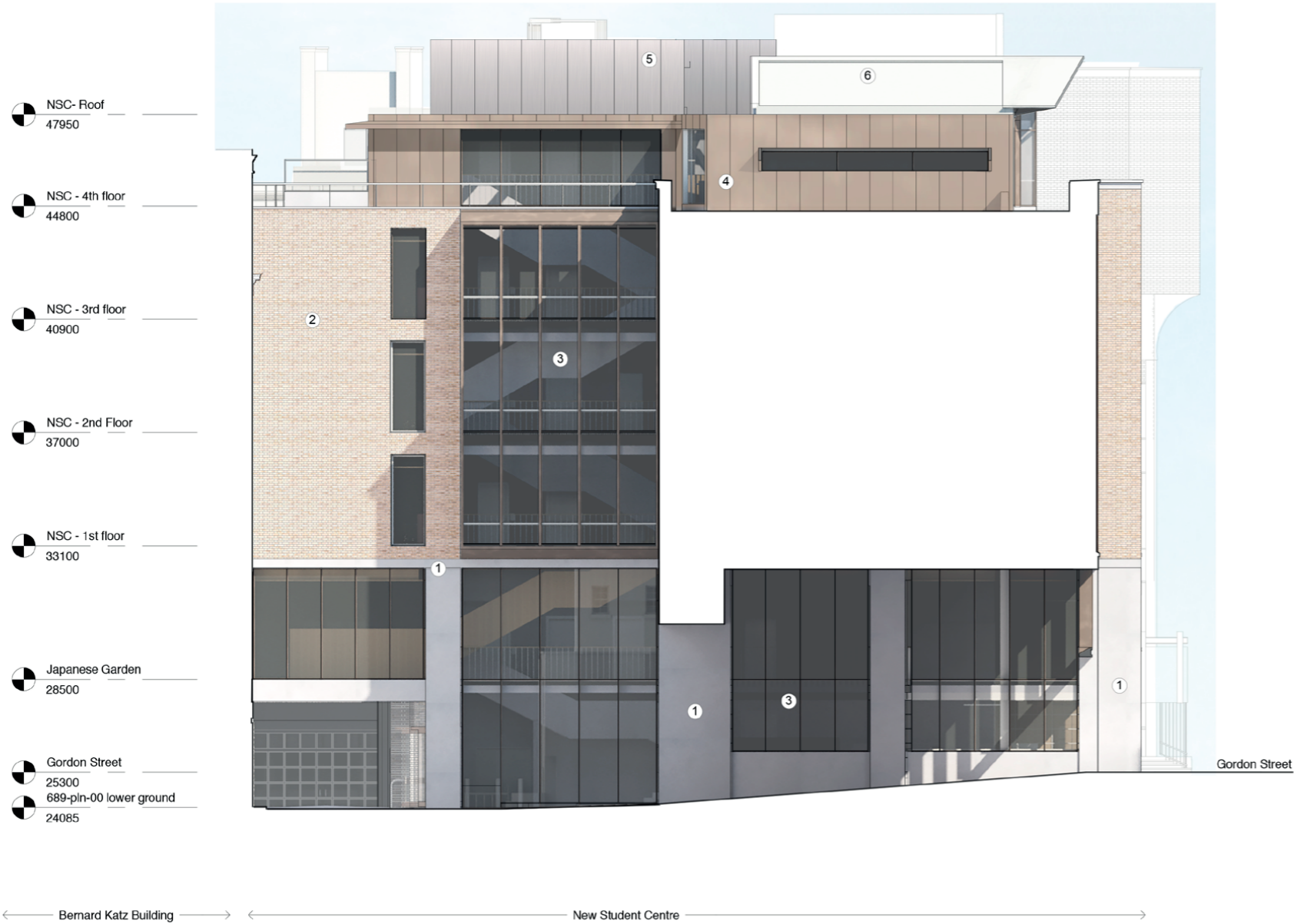
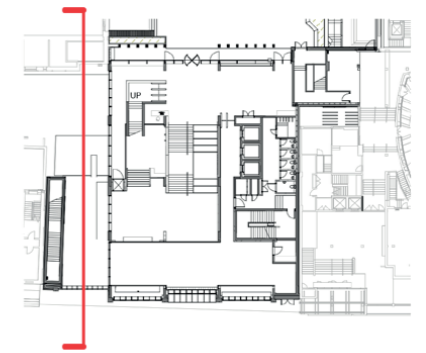
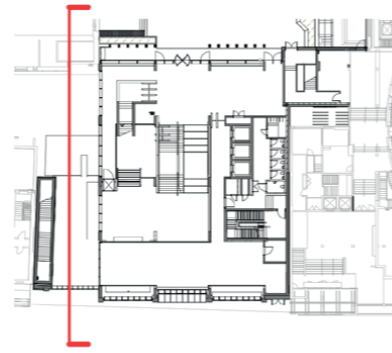
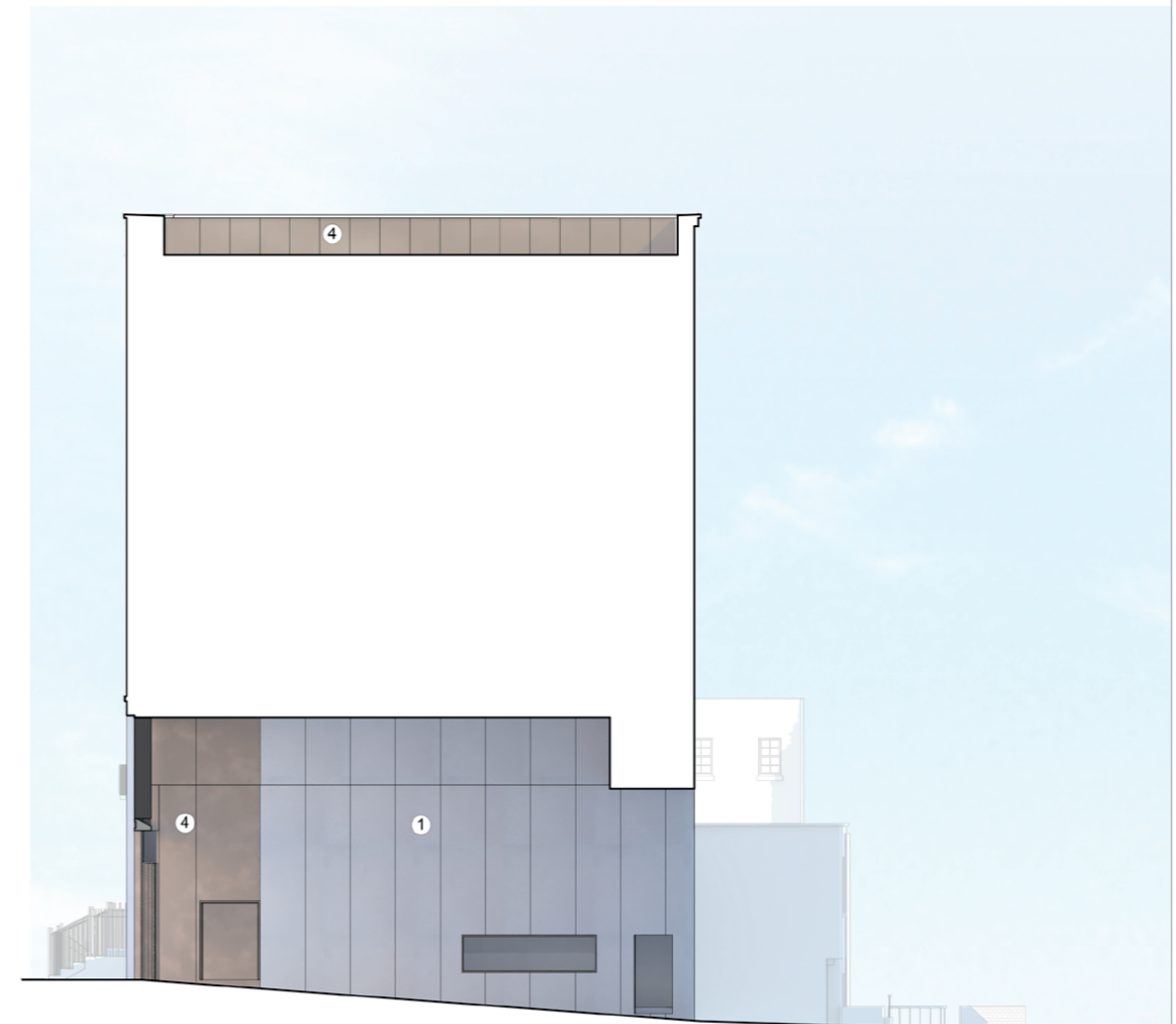


- ① Light grey reconstituted stone structural and non structural elements
- ② Buff facing brickwork with lime mortar
- ③ Structural glazing curtain wall/ window system, clear double glazing
- ④ Bronze anodised aluminium rainscreen cladding
- ⑤ Light bronze anodised aluminium rainscreen cladding/ plant screen
- ⑥ Photovoltaic arrays on waterproof roof membrane
- ⑦ Natural silver anodised aluminium rainscreen cladding



KATZ CORNER ELEVATION / SECTION LOOKING NORTH



ELEVATION / SECTION LOOKING SOUTH

Rev.	Date	Description
00	08/06/15	First issue: planning application



Nicholas Hare Architects 3 Bamsbury Square London N1 1JL telephone +44 (0)20 7619 1670 fax +44 (0)20 7619 1671 e-mail 689nha@nicholashare.co.uk		project UCL New Student Centre for University College London title South Elevation 1 - AS PROPOSED
issued For planning To be read in conjunction with all relevant information - do not scale	scale 1:100 size A1	drawing number 689-NHA-PL-112 rev. 00