

APPENDIX 2 - LB Camden DM Forum presentation



317 Finchley Road, London, NW3 6EP  
DM Forum Consultation - March 2016

AMIN TAHA ARCHITECTS



1.00 Introduction

AMIN TAHA ARCHITECTS





## 2.00 Site and Context Transport Nodes





2.00 Site and Context  
Aerial Map - Site Location





## 2.00 Site and Context

### Materials, Patterns + Textures





## 2.00 Site and Context

### Location Plan



## Overview

- 24 Residential Units
  - 1, 2 and 3 bed apartments
  - Car free & secure cycle parking
- Ground Floor Retail Unit
  - active frontage to Finchley Road
  - job creation
- Billy Fury Way Upgraded
  - relocated adjacent to station
  - new paving and lighting
- Public Realm Improvements
  - increased pavement space to Finchley Road
  - new street trees and rear gardens
- High Quality Architecture
  - relates to areas heritage and enhances existing streetscape
  - improved relationship with Overground Station
  - quality materials and detailing





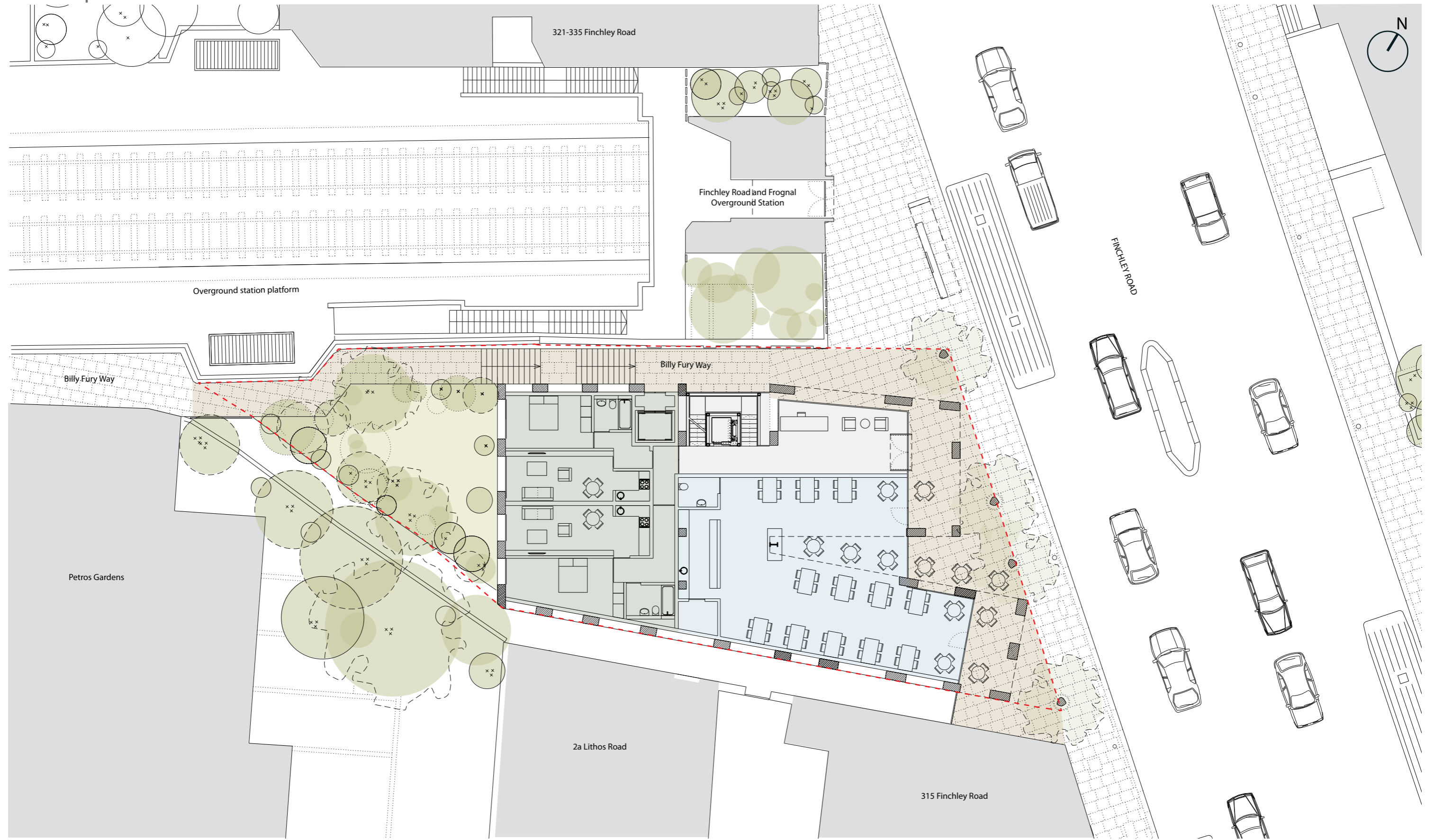
### 3.00 Proposed Scheme



Existing Site Plan



### 3.00 Proposed Scheme



Proposed Ground Floor Plan

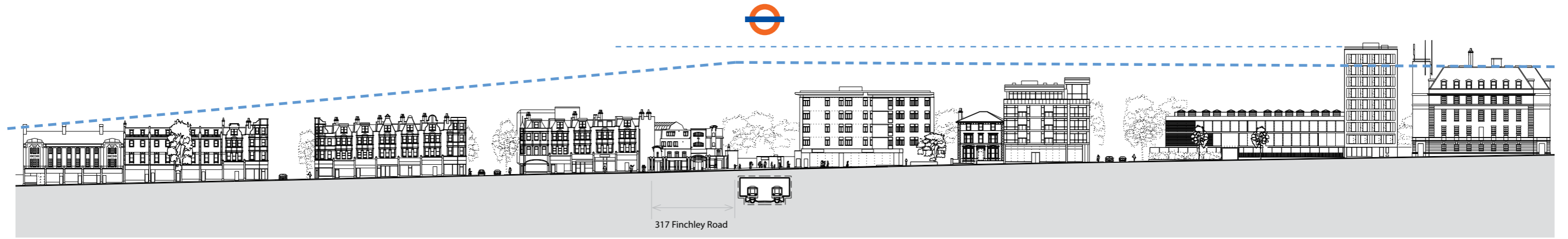


### 3.00 Proposed Scheme

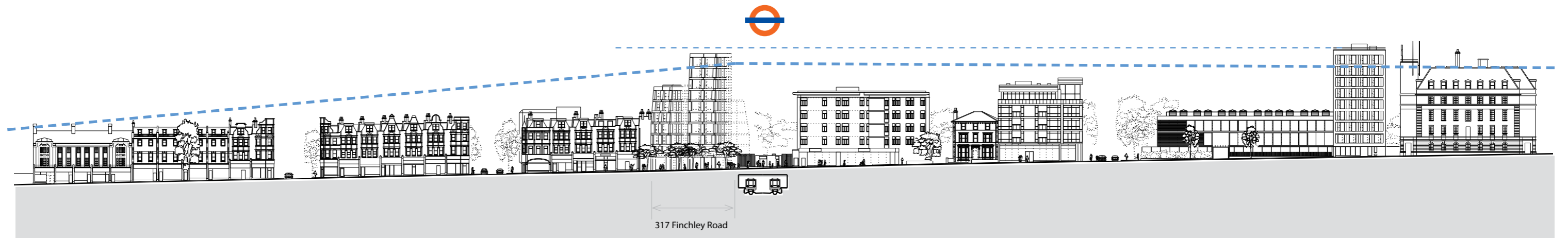




### 3.00 Proposed Scheme



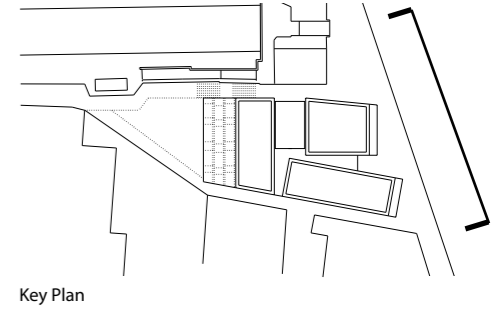
Existing Finchley Road Context Elevation



Proposed Finchley Road Context Elevation



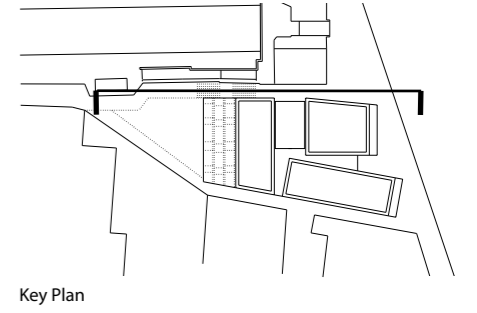
### 3.00 Proposed Scheme



Proposed Finchley Road Elevation



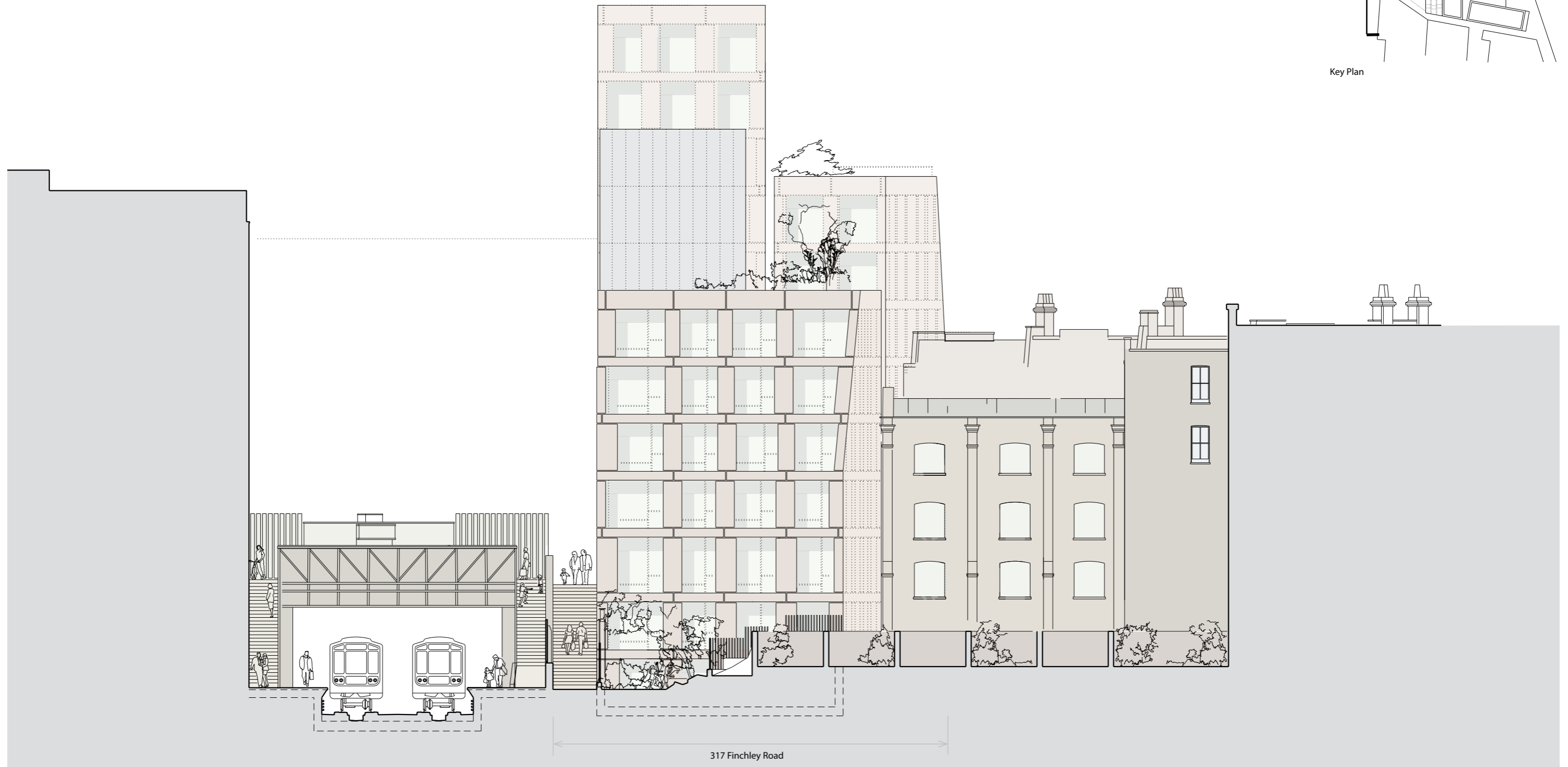
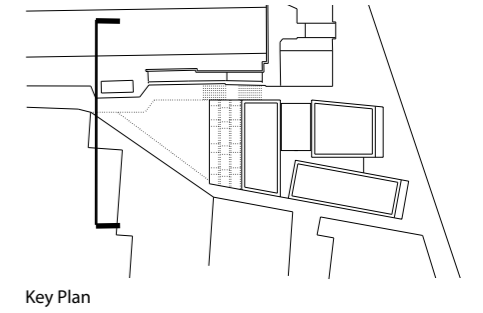
# 3.00 Proposed Scheme



Proposed North Elevation



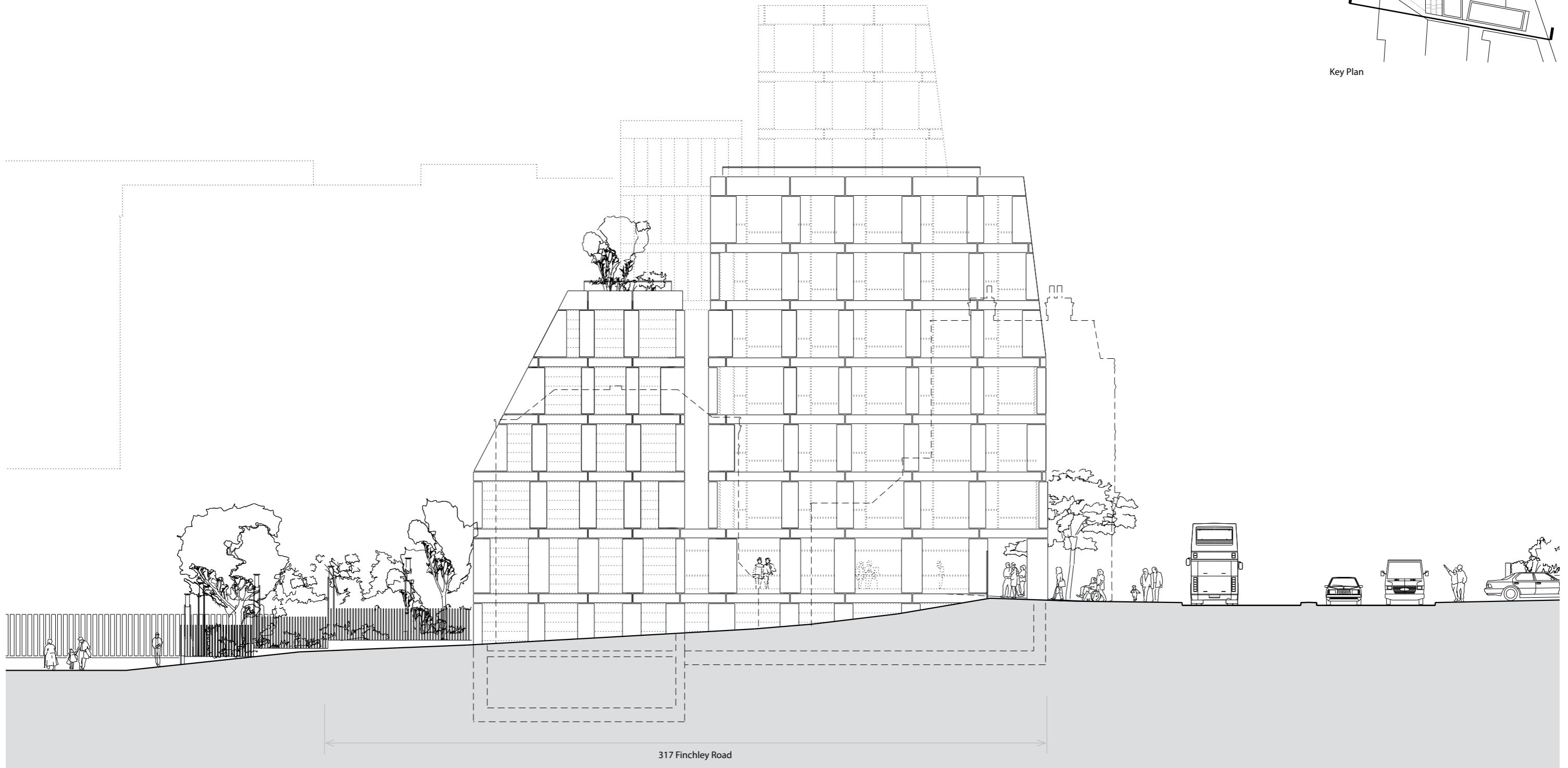
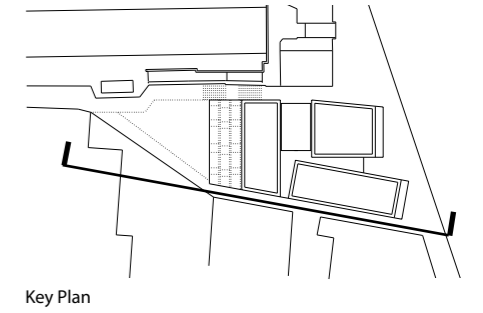
### 3.00 Proposed Scheme



Proposed Rear Elevation



### 3.00 Proposed Scheme



Proposed Billy Fury Way Elevation



3.00 Proposed Scheme



Finchley Road - looking south



3.00 Proposed Scheme



Finchley Road - looking north



3.00 Proposed Scheme



Finchley Road - Public Realm



3.00 Proposed Scheme



Finchley Road - Entrance to Billy Fury Way