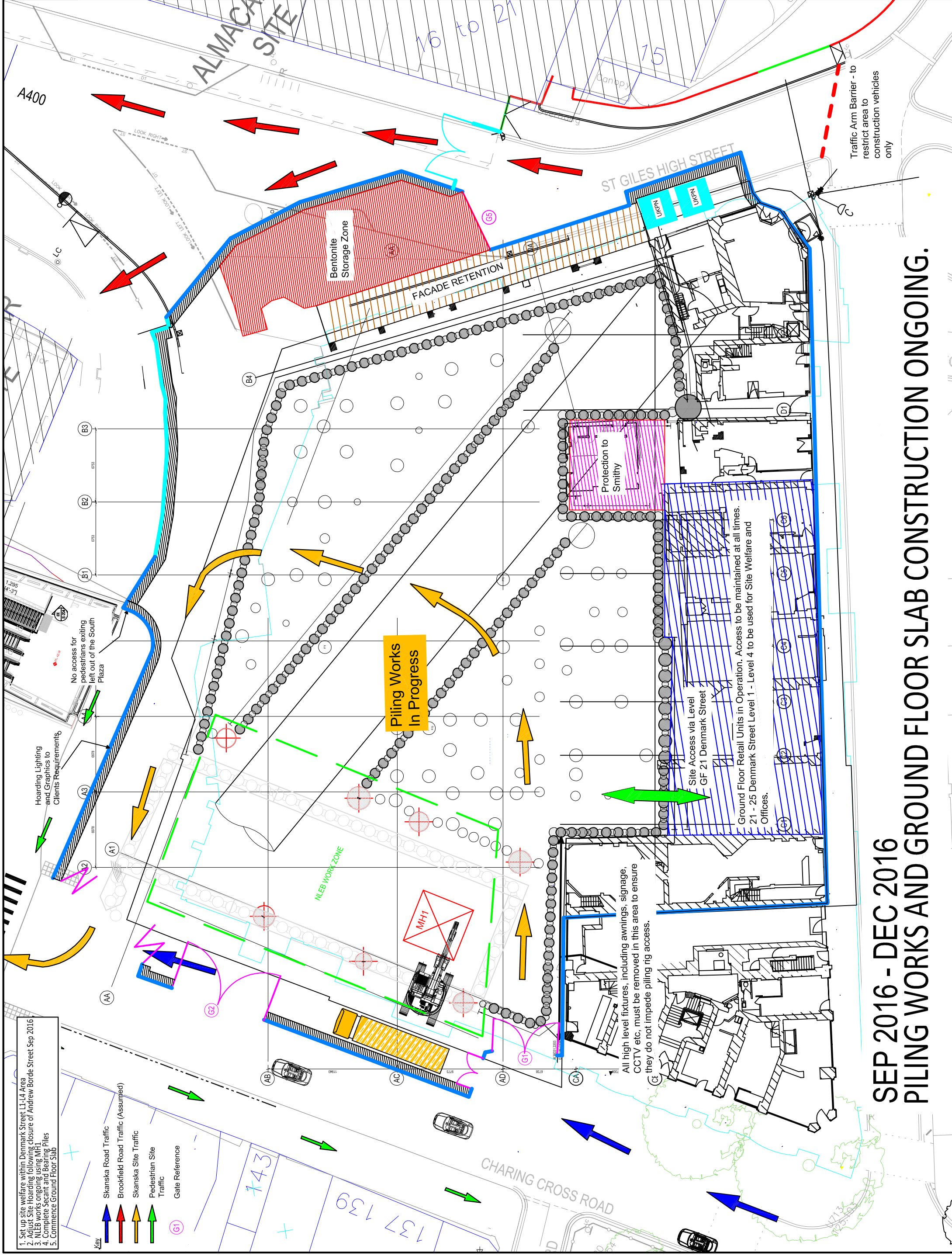


1. Expected Vehicle Movements = 55/day
 2. Week numbers based on Stage 3 programme

NOTES
 1. Expected Vehicle Movements = 55/day
 2. Week numbers based on Stage 3 programme



1. Set up site welfare within Denmark Street L1-L4 Area
 2. List Site Hoarding following Closure of Andrew Borden Street Sep 2016
 3. NLEB Works ongoing using MHP
 4. Complete Secant and Bearing Piles
 5. Commence Ground Floor Slab

Key
 Skanska Road Traffic
 Brookfield Road Traffic (Assumed)
 Skanska Site Traffic
 Pedestrian Site Traffic
 Gate Reference

All high level fixtures, including awnings, signage, CCTV etc. must be removed in this area to ensure they do not impede piling rig access.

Site Access via Level GF 21 Denmark Street
 Ground Floor Retail Units in Operation. Access to be maintained at all times.
 21 - 25 Denmark Street Level 1 - Level 4 to be used for Site Welfare and Offices.

**SEP 2016 - DEC 2016
 PILING WORKS AND GROUND FLOOR SLAB CONSTRUCTION ONGOING.**