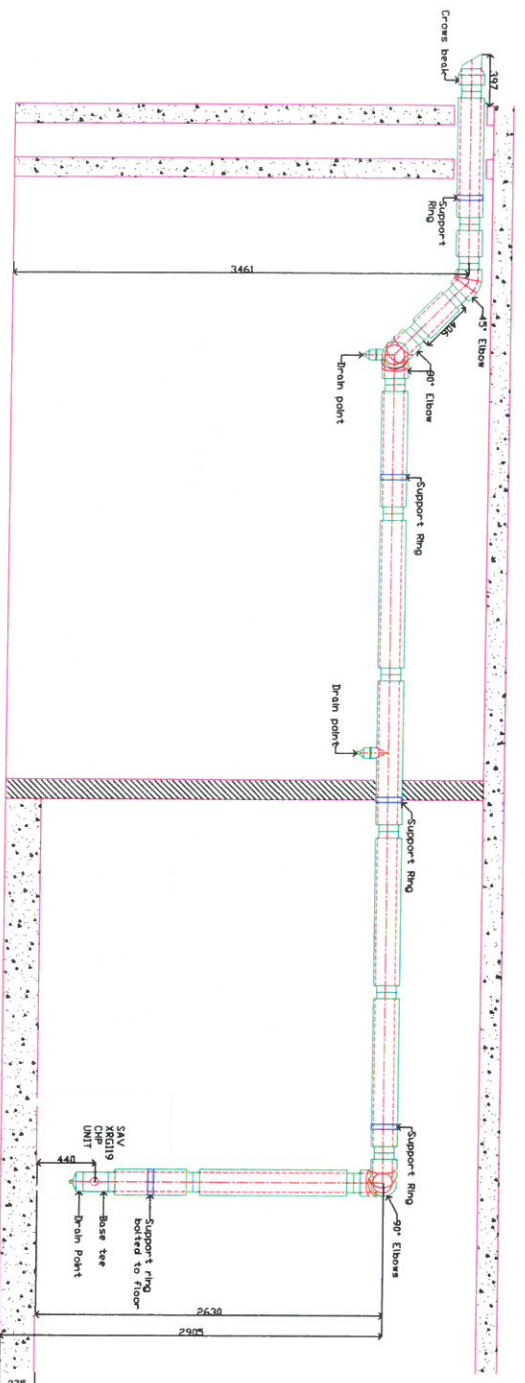
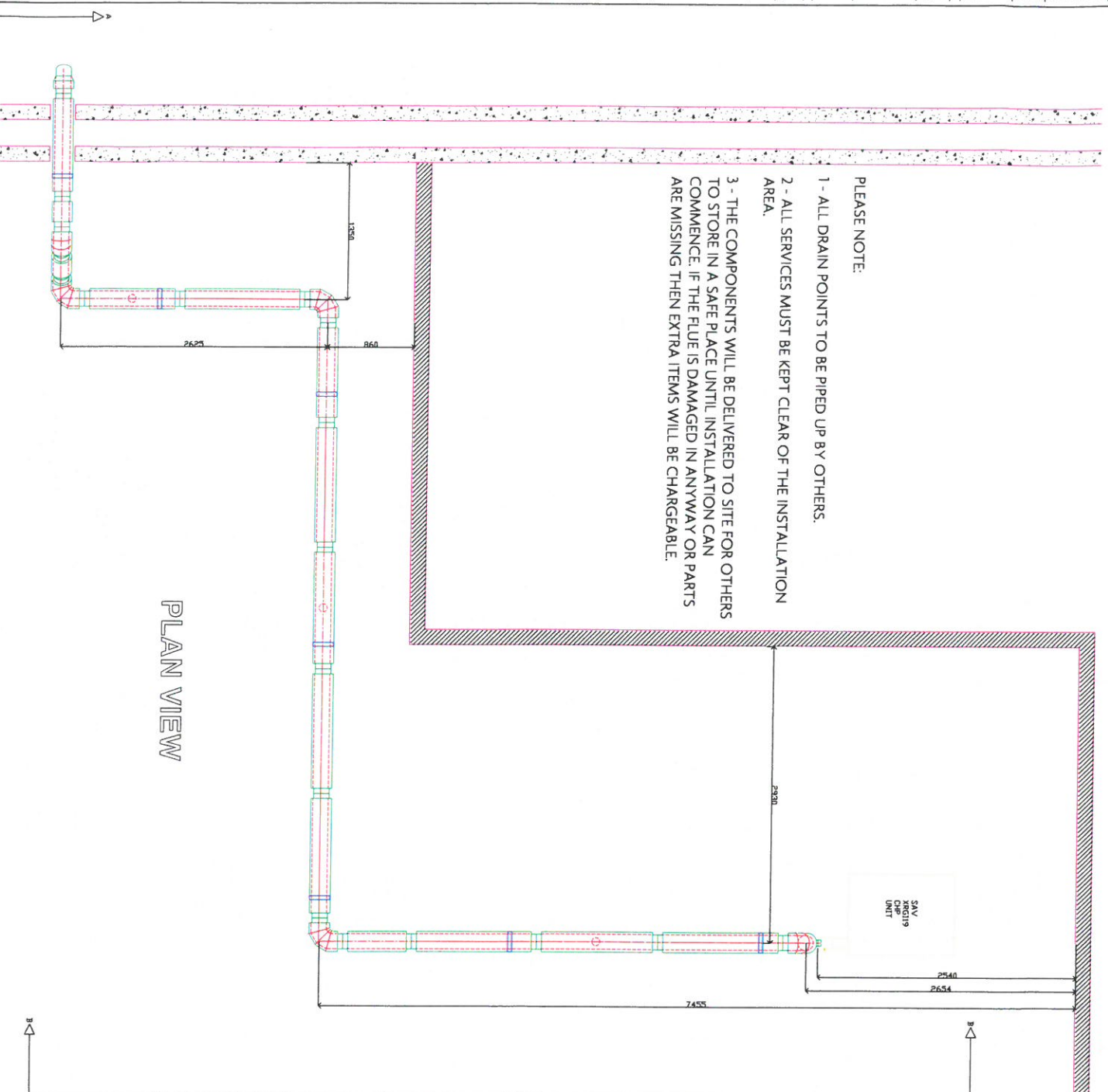


SECTION B-B



SECTION A-A



PLAN VIEW

- PLEASE NOTE:
- 1 - ALL DRAIN POINTS TO BE PIPED UP BY OTHERS.
 - 2 - ALL SERVICES MUST BE KEPT CLEAR OF THE INSTALLATION AREA.
 - 3 - THE COMPONENTS WILL BE DELIVERED TO SITE FOR OTHERS TO STORE IN A SAFE PLACE UNTIL INSTALLATION CAN COMMENCE. IF THE FLUE IS DAMAGED IN ANYWAY OR PARTS ARE MISSING THEN EXTRA ITEMS WILL BE CHARGEABLE.

NOTES

The discharge height/position of all boiler flue systems (including fan dilution flue systems) and generator / C.H.P. exhaust systems must be approved by the relevant Local Authority Public Health Department as required under the current Clean Air Act and the associated Clean Air Act Memorandum. AI Flue Systems are not responsible for obtaining this approval and have assumed that it has been obtained for this project. AI Flue Systems can if required provide advice and assistance prior to your planning approval application.

Please advise us of any COSHH assessments including asbestos awareness particular to this contract.

Upon receipt of drawing approval, manufacture will proceed in accordance with the details & dimensions as set out on this drawing. It is the clients responsibility to ensure that the flue route zone is kept free from obstruction by other services and that installation access is available above. Please ensure that this drawing is issued to your services contractors.

Q	DATE	ORGANISATION	REVISIONS

REV	DATE	ORGANISATION	REVISIONS

CONTRACT EXCLUSIONS

All builders work - internal/external

All scaffolding and/or access equipment over 3 metres in height to be supplied by the client at the time of installation.

All fittings to be supplied (where applicable) by AI Flue Systems, roof coverings and weathering by the clients roofing contractor at the time of installation. If storm collar is removed after our visit and found to leak at a later date, we shall not be held responsible.

AI Flue Systems accept no responsibility for any services or fittings installed between our site survey and installations which obstruct the flue run, the supports or installation access.

AI Flue Systems are not responsible for any electrical wiring to our installed equipment.

Any notes contained on this drawing concerning removal of pipes, cable trays etc. must be adhered to prior to our installation.

Approved from drain points.



Maun Way, Boughton Industrial Estate, Boughton Newark, Nottingham NG22 9ZD.

Tel: +44(0)1623 860 578 Fax: +44(0)1623 835 548

e-mail: info@aiflues.co.uk

web: <http://www.aiflues.co.uk>

Client: Brlth Services Ltd
Project: Alexandra College
Address: Alexandra College
 Ainsworth way (Off Boundary Road)
 Camden
 NW805R

Title: New proposed new flue system

Material Specification: D44/17

Site Engineer: S Brewer
Drawn By: S Brewer
Date: 23-10-2015
Scale: NTS
Rev: 0