

**ADVICE TO CONTRACTORS ON AVOIDING DANGER FROM BURIED ELECTRICITY CABLES.**

- 1) Do have cable drawings with you on site and check them before you start the excavation.
- 2) Use a cable locator tool on site and use it to help you.
- 3) Mark out the location of electricity cables.
- 4) Do not use a mechanical excavator within 0.5m of electricity cables.
- 5) Use spades and shovels in preference to other tools.
- 6) Never disturb electricity cables and joints or their protective covers.

**IF IN DOUBT - ASK! PHONE 0800 056 5866  
EMERGENCY - If you damage a cable or line  
Phone 0800 780 0780 (24hrs) URGENTLY**

These basic safety precautions are explained in detail in the HSE booklet HSG47 - Avoiding Danger from Underground Services, a copy of which may be obtained from your supervisor or HNSO.

Please be aware that electric lines belonging to other owners of licensed electricity distribution systems may be present and it is your responsibility to identify their location.

1. UK Power Networks does not warrant that the information provided to you is correct. You rely upon it at your own risk.

2. UK Power Networks does not exclude or limit its liability if it causes the death of any person or causes personal injury to a person where such death or personal injury is caused by its negligence.

3. Subject to paragraph 2 UK Power Networks has no liability to you, in contract, in tort (including negligence), for breach of statutory duty or otherwise howsoever for any loss, damage, costs, claims, demands, or expenses that you or any third party may suffer as a result of using the information provided without limitation of physical damage to property, loss of opportunity, loss of savings, loss of goodwill, loss of business, loss of profit, loss of any special or consequential loss or damage whatsoever.

Reproduced by permission of Ordnance Survey on behalf of HMSO. (c) Crown Copyright. 1000149226. Data has been added to the Ordnance Survey base map; all proprietary rights in such additional data are and shall remain the exclusive property of (c) Eastern Power Networks plc or London Power Networks plc each being a distribution licensee under section 6(1)(c) of the Electricity Act 1989 for the relevant distribution services area as that term is defined in such licensee's distribution licence. All rights in such data reserved.

**PRIMARY CABLES  
EXTRA HIGH VOLTAGE CABLES (EHV) 22,000 TO 132,000 Volts**

Depth normally 750mm cover in carriageway & 600mm cover in footway.

Before digging within one metre of these cable routes telephone 0800 056 5866 in order that the Company's apparatus may be located on site and any necessary protection works agreed.

**N.B. THRU-ST BORERS OR MOLES MUST NOT BE USED WITHIN THE VICINITY OF ANY CABLES BELONGING TO UK POWER NETWORKS WITHOUT FIRST CONTACTING THIS COMPANY.**

1. The position of the apparatus shown in this drawing is believed to be correct but the original drawings may have been altered since the apparatus was installed.
2. The position of the cables should be verified - use approved cable avoidance tools prior to excavation using suitable hand tools.
3. It is essential that trial holes are carefully made avoiding the use of mechanical tools or picks until the exact location of all cables has been determined.
4. It must be assumed that there is a service cable into each property, lamp column and street.
5. All cables must be treated as being live unless proved otherwise by UK Power Networks.
6. The information provided must be given to all people working near UK Power Networks' plant & equipment. Do not use plans more than 3 months after the issue date for excavation purposes.
7. Please be aware that electric cables/lines belonging to other owners of licensed electricity distribution systems may be present and it is your responsibility to identify their location.

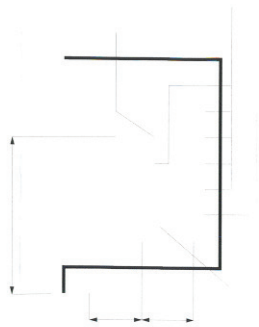
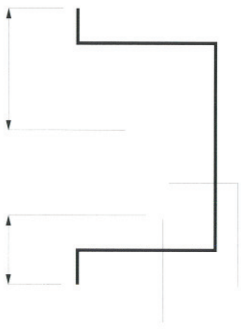
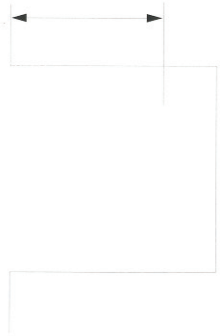
Plotted On : 13/10/2014  
Plotted By : Lynda Blizard  
Plot Description : Contents of plot menu line title\_line\_1  
Contents of plot menu line title\_line\_2  
Map Centre : 102884NW

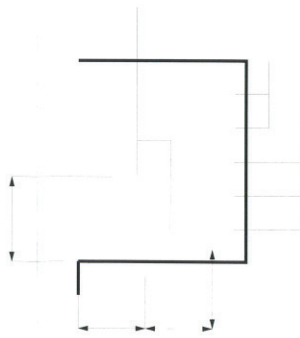
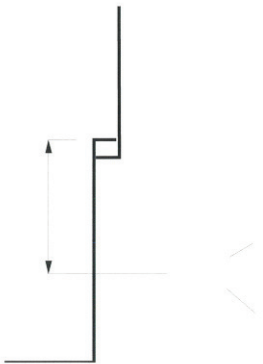
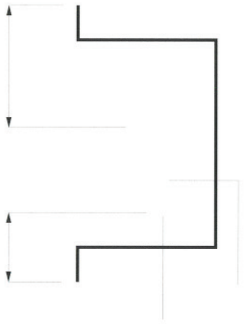
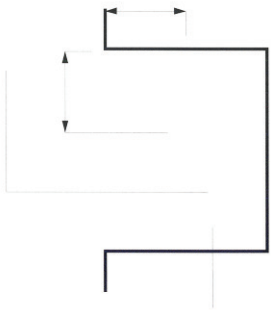


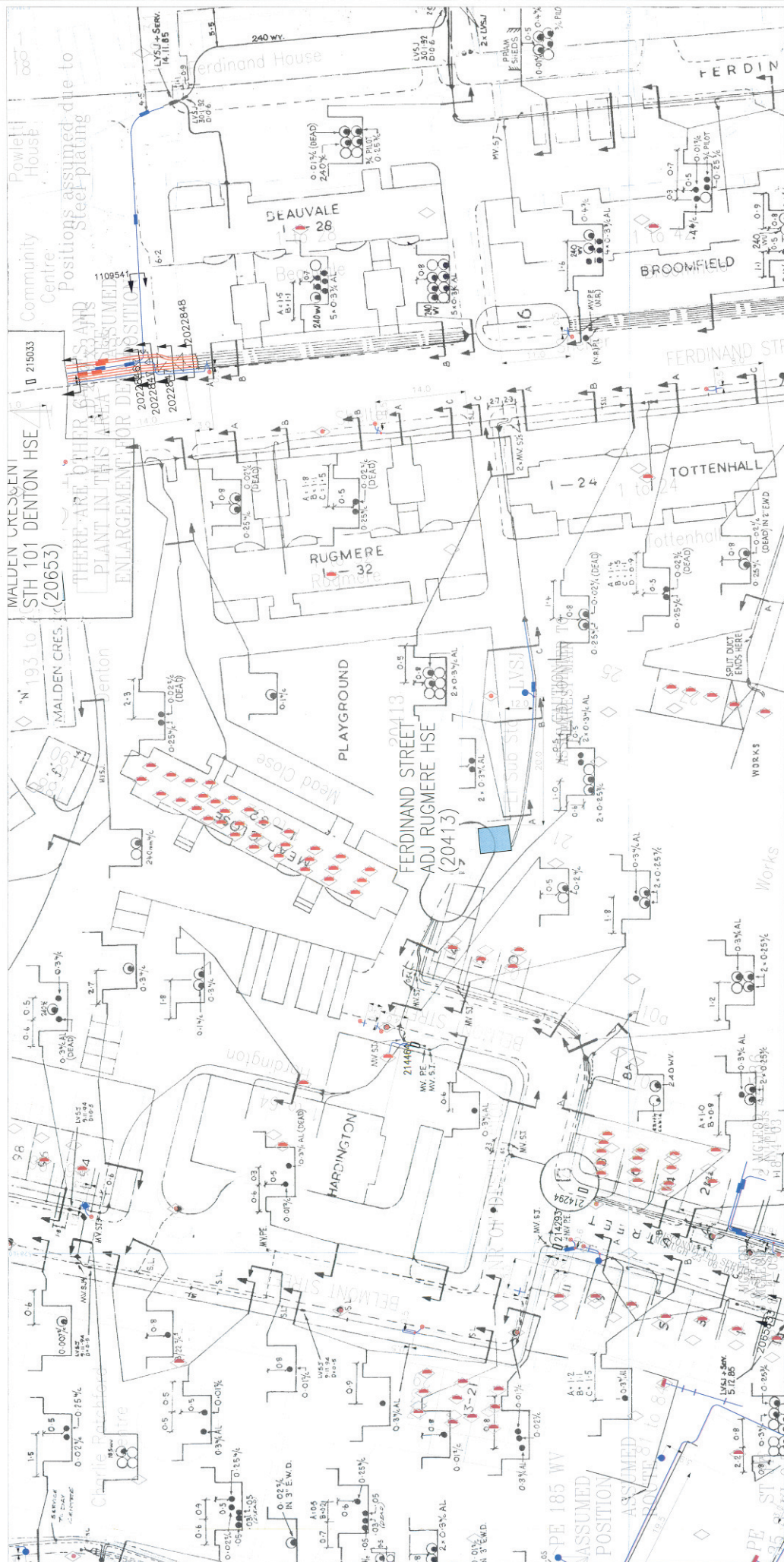
UK Power Networks  
Plan Provision  
PSW/CK  
Suffolk  
IP3 BAA  
Tel 0800 0565 866  
Fax 08701 963782



For details of the symbology please refer to  
<http://www.ukpowernetworks.com/asset-library/asset-library/asset-library/symbols-sheet>







**ADVICE TO CONTRACTORS ON AVOIDING DANGER FROM BURIED ELECTRICITY CABLES.**

- 1) Do have cable drawings with you on site and check them before you start the work.
- 2) Do not use a cable locator tool on site and use it to help you.
- 3) Mark out the location of electricity cables.
- 4) Do not use a mechanical excavator within 0.5m of electricity cables.
- 5) Use spades and shovels in preference to other tools.
- 6) Never disturb electricity cables and joints or their protective covers.

IF IN DOUBT - ASK! PHONE 0800 056 866  
 Phone 0800 780 0780 (24hrs) URGENTLY

These basic safety precautions are explained in detail in the HSE booklet HS(G)47 - Avoiding Danger from Underground Services; a copy of which may be obtained from your supervisor or HNSO.

Please be aware that electric lines belonging to other owners of licensed electricity distribution systems may be present and it is your responsibility to identify their location.

1. UK Power Networks does not warrant that the information provided to you is correct. You rely upon it at your own risk.

2. UK Power Networks does not exclude or limit its liability if it causes the death of any person or causes personal injury to a person where such death or personal injury is caused by its negligence.

3. Subject to paragraph 2 UK Power Networks has no liability to you, in contract, in tort (including negligence), for breach of statutory duty or otherwise howsoever for any loss, damage, costs, claims, demands, or expenses that you or any third party may suffer as a result of any physical damage to property or any economic loss (including without limitation loss of profit, loss of opportunity, loss of savings, loss of goodwill, loss of business, loss of use) or any special or consequential loss or damage whatsoever.

Reproduced by permission of Ordnance Survey on behalf of HMSO. (c) Crown Copyright and Database Right 2014. Licence number 100019826. Data has been added to the Ordnance Survey base map; all proprietary rights in such additional data are and shall remain the exclusive property of (c) Eastern Power Networks plc or London Power Networks plc each being a distribution licensee under section 6(1)(c) of the Electricity Act 1989 for the relevant distribution services area as that term is defined in such licensee's distribution licence. All rights in such data reserved.

**PRIMARY CABLES**  
 EXTRA HIGH VOLTAGE CABLES (EHV) 22,000 TO 132,000 Volts  
 Depth normally 750mm cover in carriageway & 600mm cover in footway.  
 Before digging within one metre of these cable routes telephone 0800 056 866 in order that the Company's apparatus may be located on site and any necessary protection works agreed.

**N.B. THREAT BORERS OR MOLES MUST NOT BE USED WITHIN THE VICINITY OF ANY CABLES BELONGING TO UK POWER NETWORKS WITHOUT FIRST CONTACTING THIS COMPANY.**

1. The position of the apparatus shown on this drawing is believed to be correct but the original markers may have been altered since the apparatus was installed.
2. The position of the apparatus must be verified - use approved cable avoidance tools prior to excavation using suitable hand tools.
3. It is essential that trial holes are carefully made avoiding the use of mechanical tools or picks until the exact location of all cables have been determined.
4. It must be assumed that there is a service cable into each property, lamp column and street light.
5. All cables must be treated as being live unless proved otherwise by UK Power Networks.
6. The information provided must be given to all people working near UK Power Networks' plant & equipment. Do not use plans more than 3 months after the issue date for excavation purposes.
7. Please be aware that electric cables/lines belonging to other owners of licensed electricity distribution systems may be present and it is your responsibility to identify their location.

Plotted On : 13/10/2014  
 Plotted By : Lynda Blizard  
 Plot Description : Contents of plot menu file title\_line\_1  
 Contents of plot menu file title\_line\_2  
 Map Centre : T028845W

**UK Power Networks**  
 Plan Provision  
 Customer Support  
 Salford  
 IP3 8AA  
 Tel 0800 0565 866  
 Fax 08701 963782

For details of the symbology please refer to:  
<http://www.ukpowernetworks.co.uk/family-energy/customer/understanding-safety-symbols.html>

TO 2884  
NW-S  
46.11

X (L120) TO 2884 SW-N



(M27) TQ2884 NW-S

(M19) TQ2884 NE-S

For details of CECB Zones in this area refer to South Eastern Region Banking House Summer Street SE Tel 01-251 7000

TQ 2884  
NW-S  
1:500

46.11

(M20)

(N25) TO 2884 SW-N



