

TREE SURVEY INFORMATION

- T1 = Euclyptus | RPA = 8.7 metres
- T2 = Magnolia | RPA = 1.4 metres
- T3 = Persian Ironwood | RPA = 2.5 metres
- T4 = Common Lime | RPA = 5.4 metres
- T5 = Katsura Tree | RPA = 2.1 metres
- T6 = Horse Chestnut - not accesible / truncated old tree
- T7 = Leyland Cypress | RPA = 3.9 metres
- T8 = Fastigate Hornbeam | RPA = 2.7 metres
- T9 = Fastigate Hornbeam | RPA = 2.8 metres
- T10 = Holly | RPA = 1.5 metres
- T11 = Eucalyptus | RPA = 2.1 metres

RPA = root protection area radius measured from centre of stem and shown as red dashed circle around the tree

* Read in conjunction with Tree Report WAS13-2015



SITE PLAN AS EXISTING 1:100@A1



SITE LOCATION PLAN 1:1250 @A1

THESE DRAWINGS PREPARED FROM DRAWINGS PRODUCED BY OTHERS

REVISIONS



GCK ARCHITECTS LIMITED

6 FIELD WAY
CAMBRIDGE
CB1 8RW
TEL 01223 411631
MOBILE 07860 650239
george@gckarch.com

Project: 4 FROGNAL CLOSE LONDON NW3 6YB

Project No:

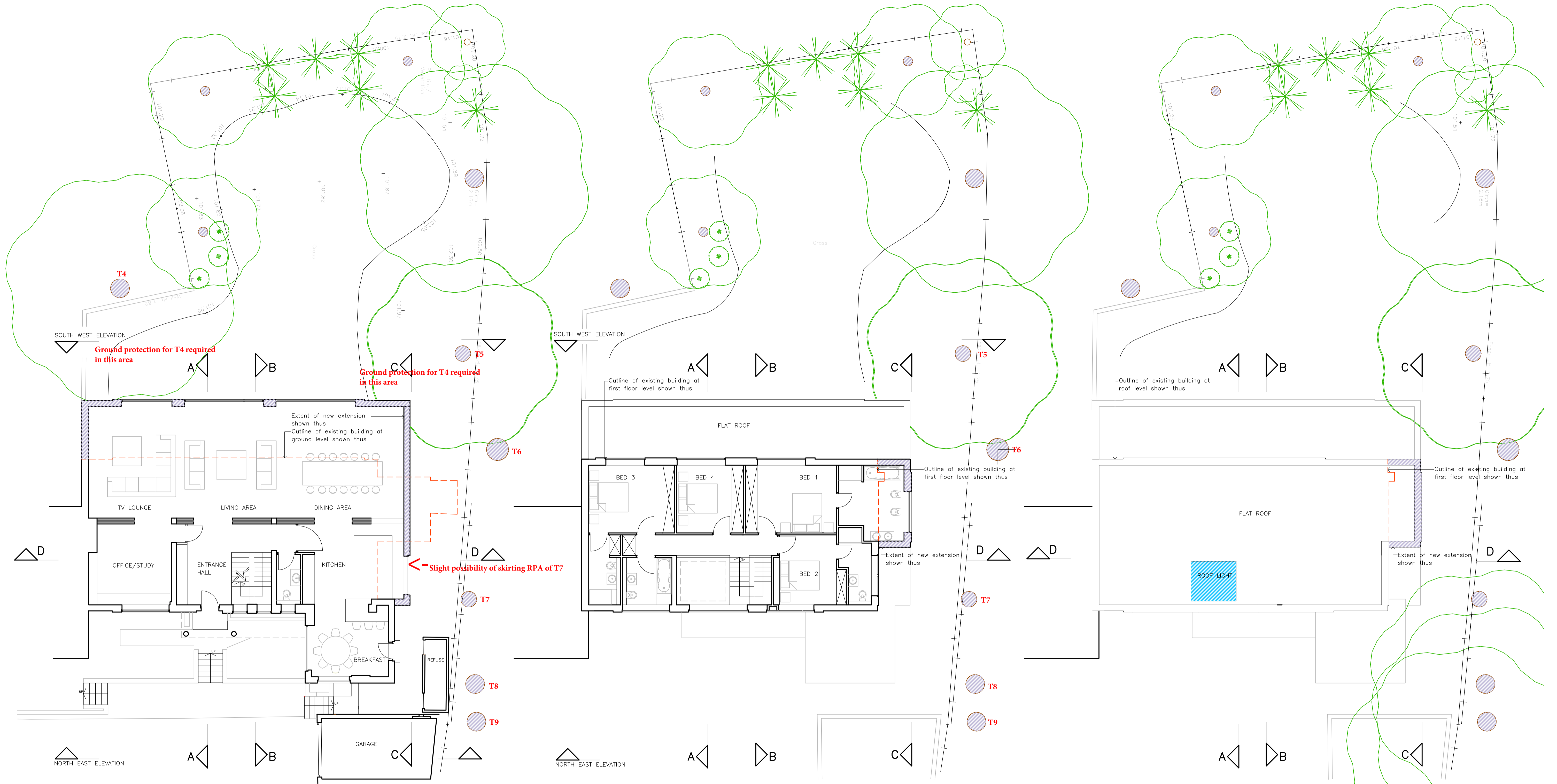
Title: SITE LOCATION PLAN AND SITE PLAN AS EXISTING

Dwg Rev

Type Elem No.

Scale 1:100 & 1:1250 @A1 Date SEPT 2014

L(PL)4FRG/100

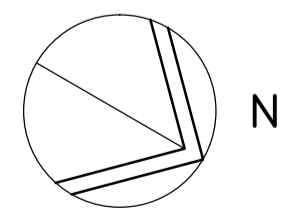
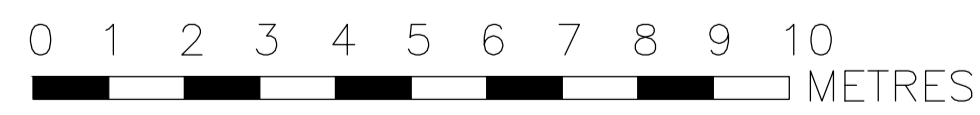


GROUND FLOOR PLAN AS PROPOSED 1:100@ A1

FIRST FLOOR PLAN AS PROPOSED 1:100@ A1

ROOF PLAN AS PROPOSED 1:100@ A1

FLOOR PLANS AS PROPOSED 1:100@A1



THESE DRAWINGS PREPARED FROM
DRAWINGS PRODUCED BY OTHERS

REVISIONS



6 FIELD WAY
CAMBRIDGE
CB1 8RW
TEL 01223 411631
MOBILE 07860 650239
george@gckarch.com

GCK ARCHITECTS LIMITED

Project: 4 FROGNAL CLOSE LONDON NW3 6YB

Project No.:

Title: FLOOR PLANS AS PROPOSED

Dwg Rev

Type Elem No.

Scale: 1:100 @ A1

Date: JULY 2015

L(PL)4FRG/301R2