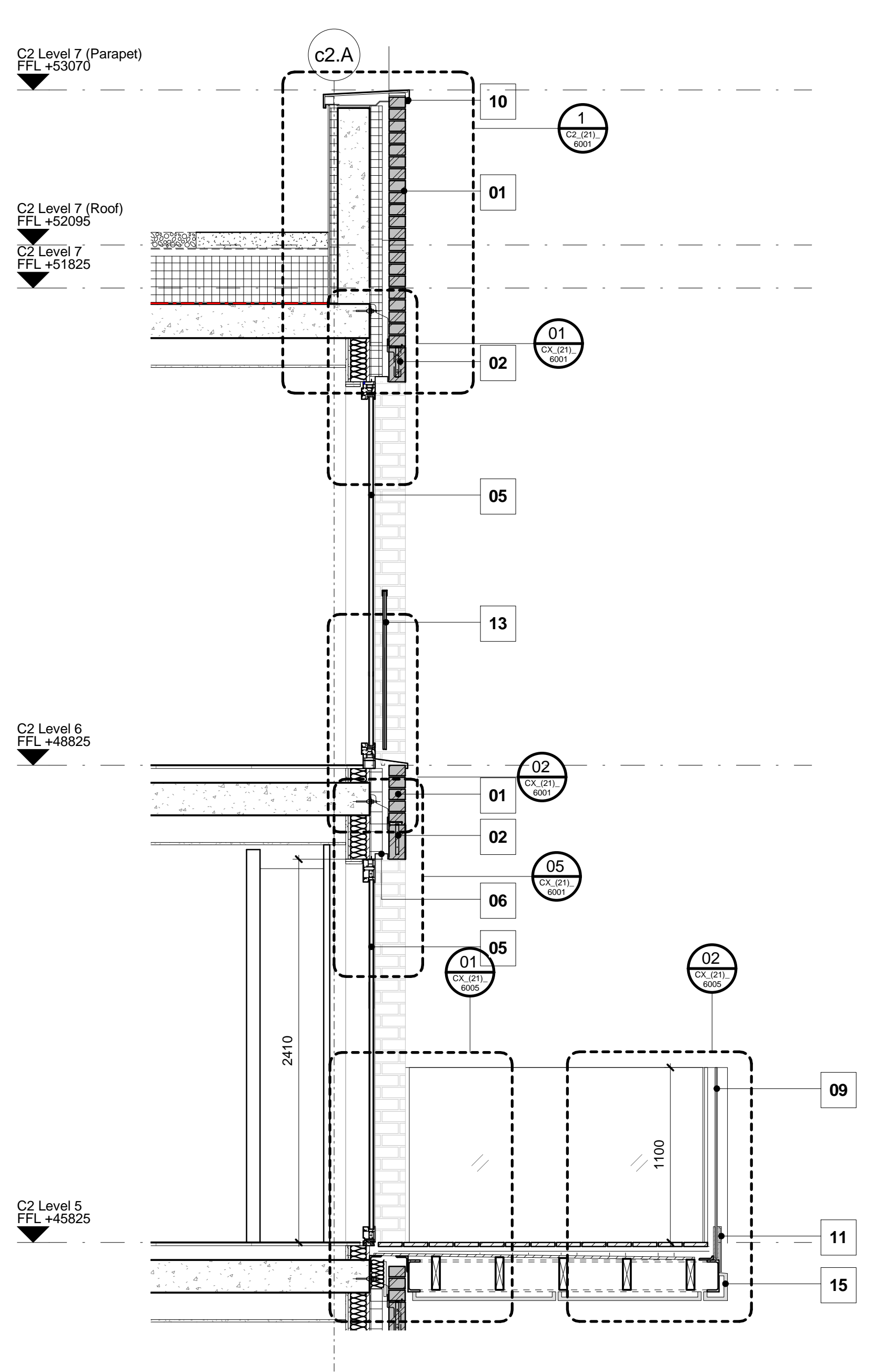
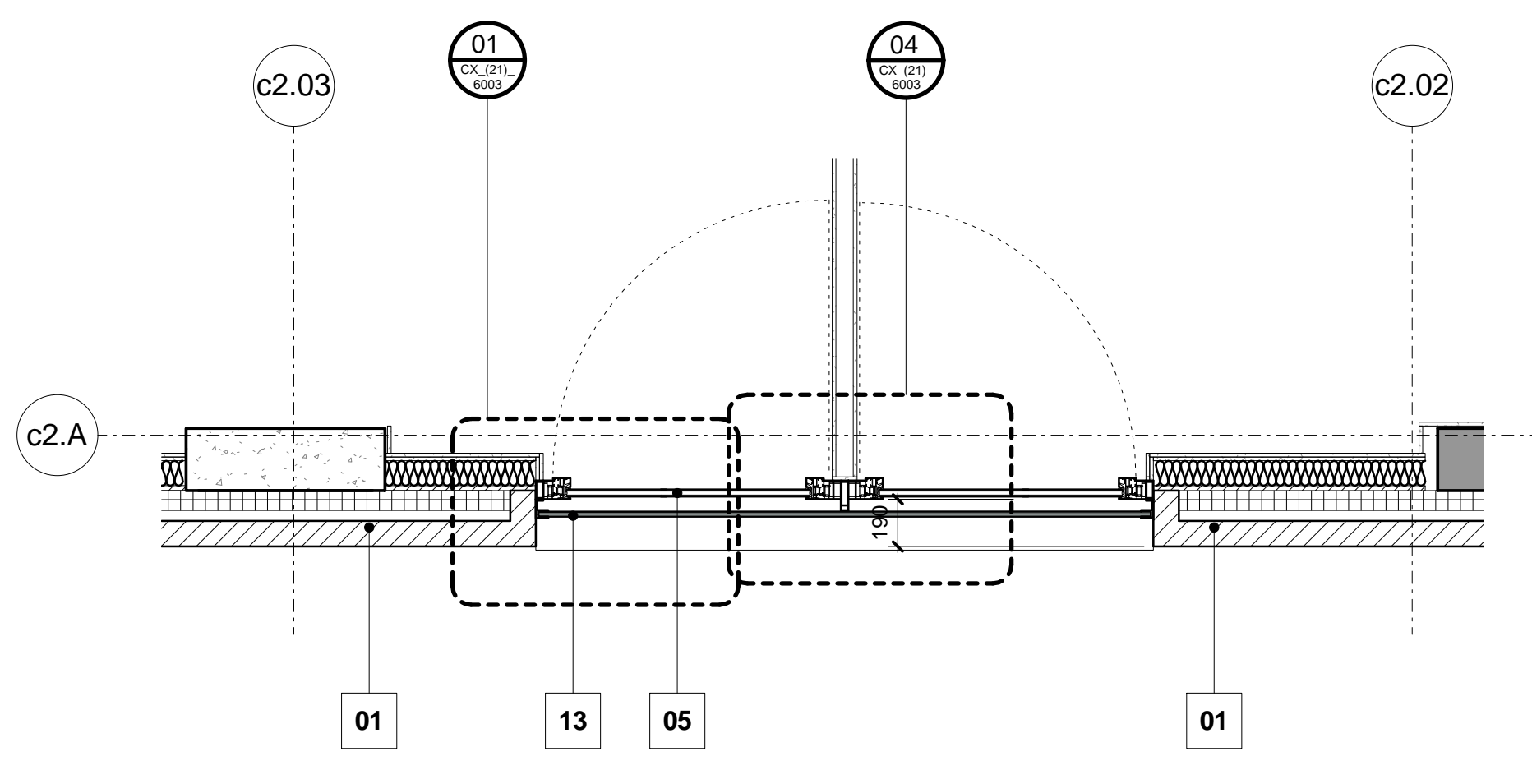


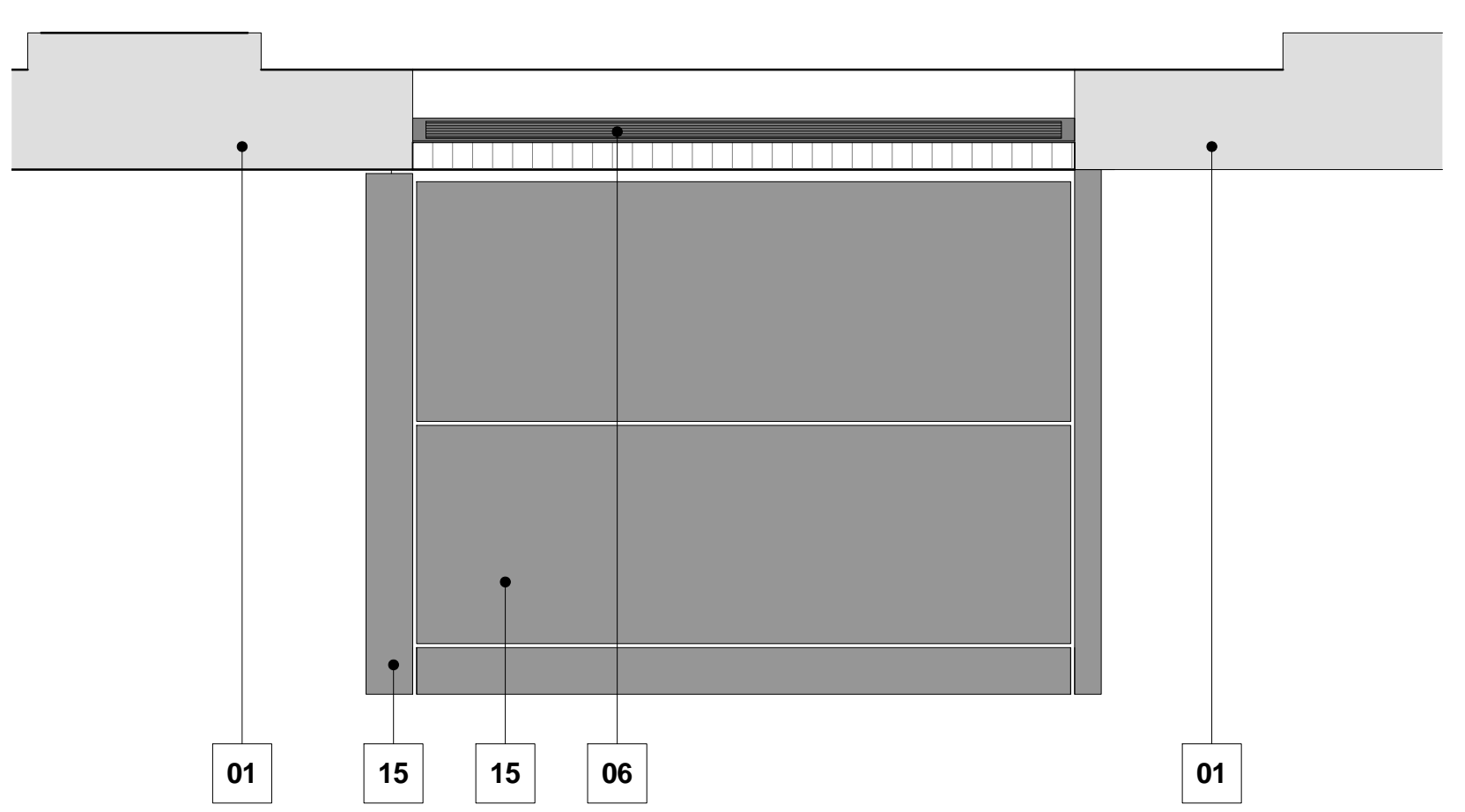
01 ELEVATION_C2 CANTILEVER BALCONY AND TYPICAL WINDOW



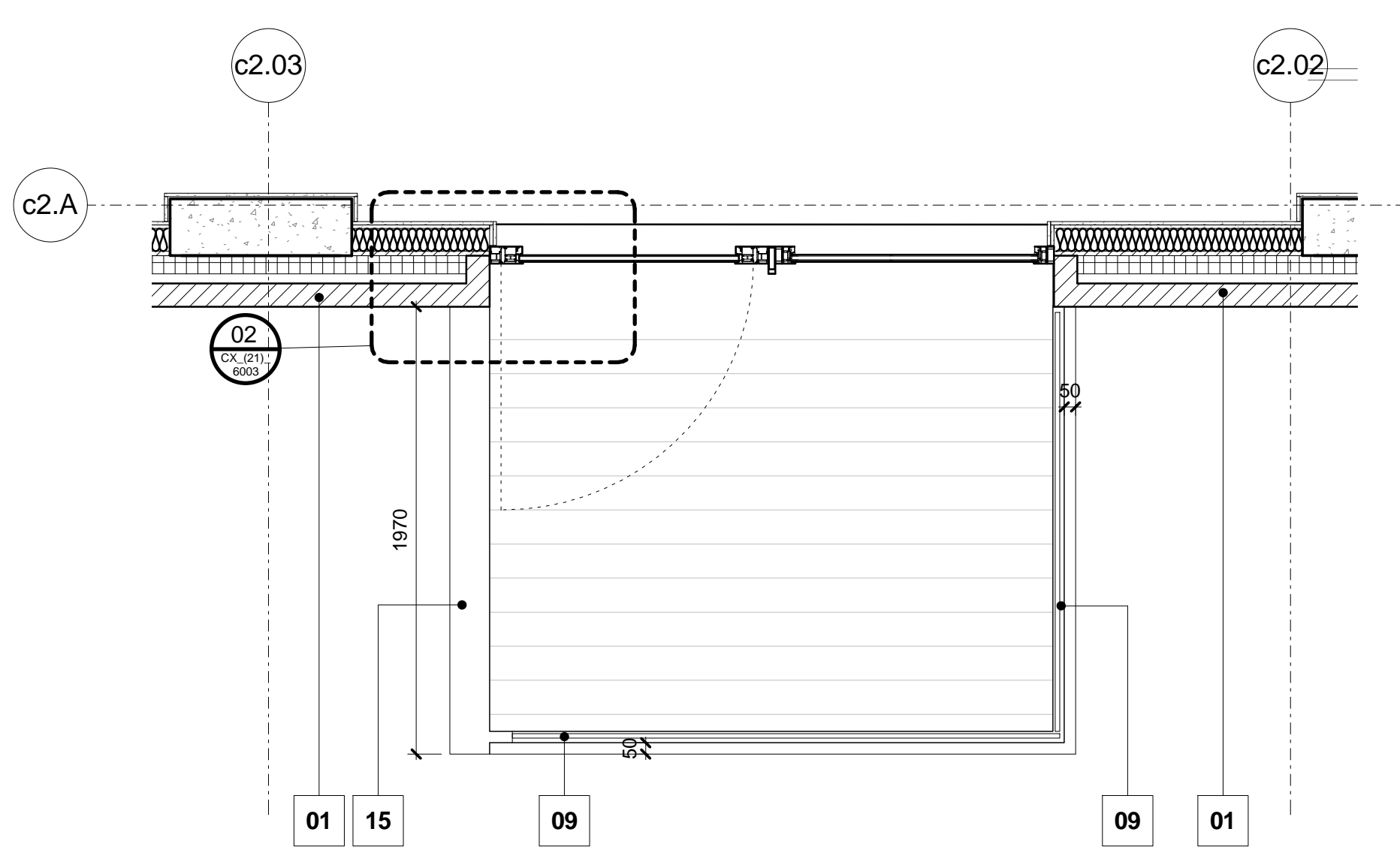
04 SECTION_C2 CANTILEVER BALCONY AND TYPICAL WINDOW



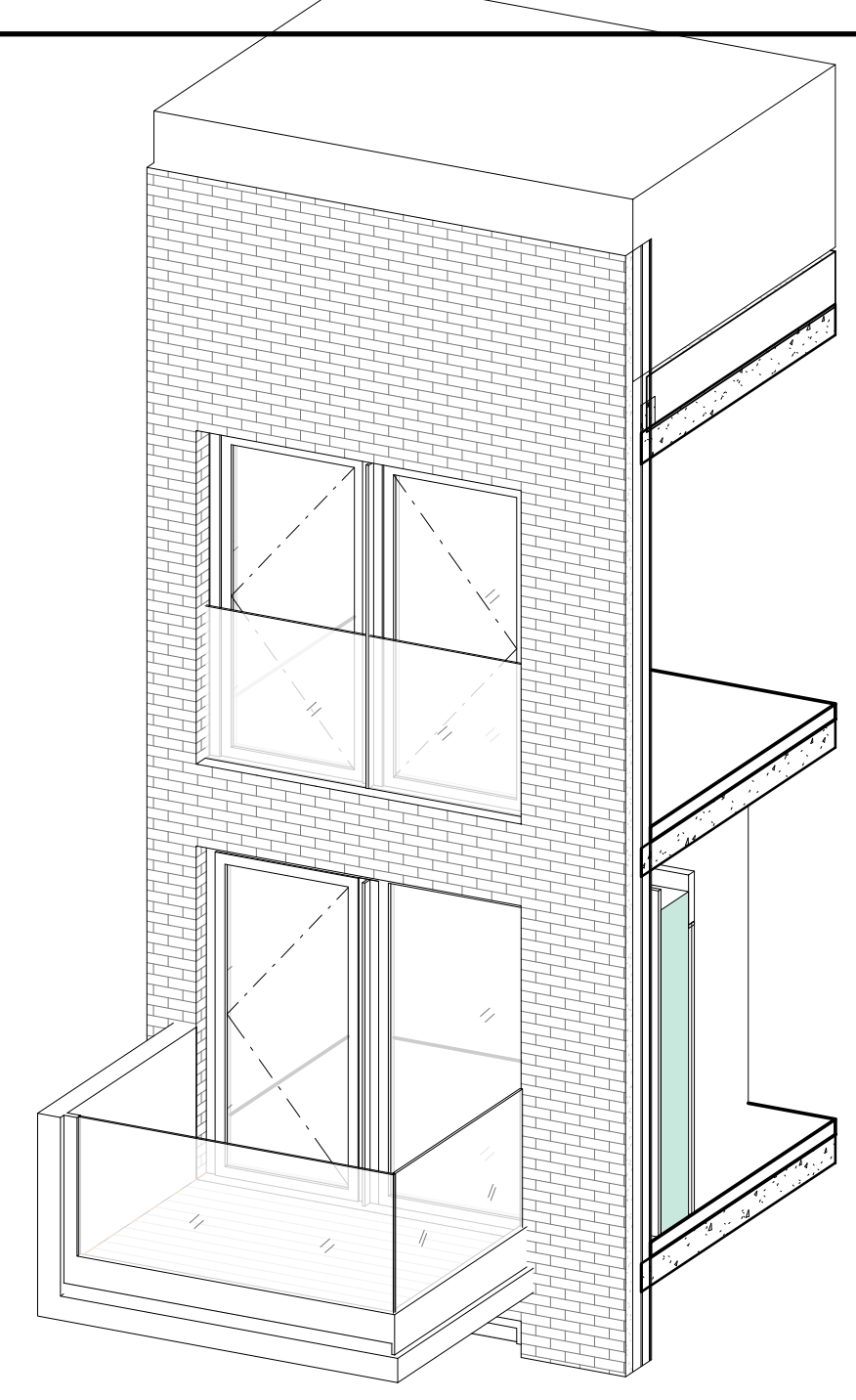
02 PLAN_C2 TYPICAL WINDOW PLAN WITH SEPERATING WALL



06 RCP_C2 CANTILEVER BALCONY



03 PLAN_C2 CANTILEVER BALCONY



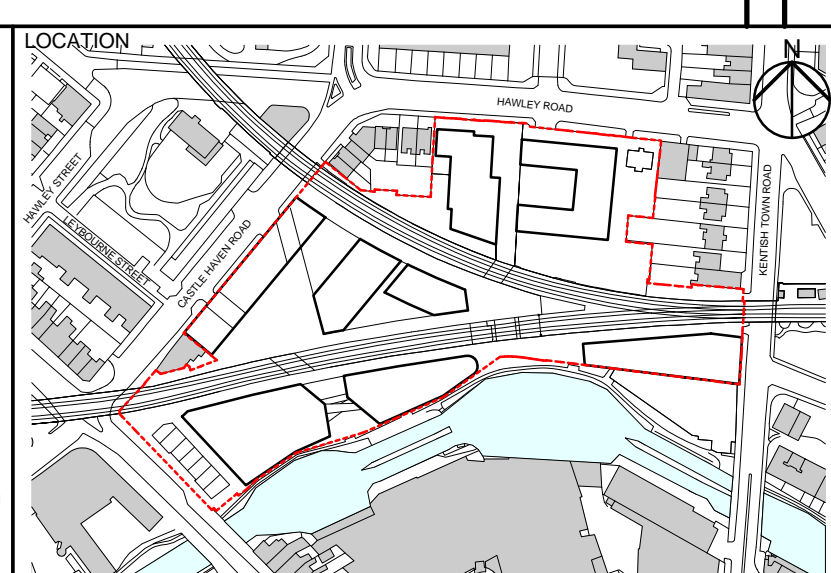
- 01 Facing brickwork as F10/111
- 02 Brick soldier course special as F10/111
- 03 Precast concrete facing as F31/113
- 04 Glazed Facing brickwork as F10/115
- 05 Window system as L10/331
- 06 Extruded aluminium perforated PPC metal MVHR grill
- 07 Insulated render board with directly applied render as H20/150A
- 08 Timber decking to balconies as Q55/111
- 09 Glass balustrade with stainless steel clamp and top rail as L30/553
- 10 Preformed PPC Aluminium coping as F30/780A
- 11 PPC Aluminium flashing as H31/111
- 12 Brick soldier course special as F10/111
- 13 Juliet balcony as L10/331 - supported off window system
- 14 Insulated PPC aluminium cladding
- 15 GRC on steel frame as H40/131
- 16 Through colour render board on hanging system as H20/150A

For similar rendered visual refer to C1_(21)_4052

REV	DATE	DESCRIPTION
T01	26/06/15	Stage E Tender Issue

CONSULTANTS	
CLIENT:	Stanley Sidings
CONTRACTOR:	-
STRUCTURAL ENGINEER:	Walsh Group
MECHANICAL ENGINEER:	Hoare Lea
COST CONSULTANT:	Gardiner & Theobald
PROJECT MANAGER:	Gardiner & Theobald
ACOUSTIC CONSULTANT:	Anup
TRANSPORT CONSULTANT:	Anup
PLANNING CONSULTANT:	Gerald Eve
LANDSCAPE ARCHITECT:	Fabrik
CDM CO-ORDINATOR:	MSA Safety

NOTE
 1. Do not scale from this drawing.
 2. All dimensions to be checked on site by the contractor and such dimensions to be his responsibility.
 3. Report all drawing errors, omissions and discrepancies to the architect.
 4. This document may be issued in an uncontrolled CAD format to enable others to use it as background information to make alterations and/or additions. In that instance the file will be accompanied by a PDF version. It is for those making such alterations and additions to ensure that they make use of current background information. AHMM Ltd accepts no liability for any such alterations or additions to the background information or arising out of changes to background information which occur prior to alterations of additions being made.



ALLFORD HALL MONAGHAN MORRIS
 ARCHITECTS Ltd
 5-23 OLD STREET LONDON, EC1V 9HL
 TEL 020 7251 5261 FAX 020 7251 5123 WEB WWW.AHMM.CO.UK

job title
CAMDEN LOCK VILLAGE
 drawing title / location
C2 CANTILEVER BALCONY AND TYPICAL WINDOW

drawn by	checked	scale	status
NL	KH	1 : 25 @ A1	TENDER
project	building	class	drawing number
14045	C2_(21)_	4008	T01