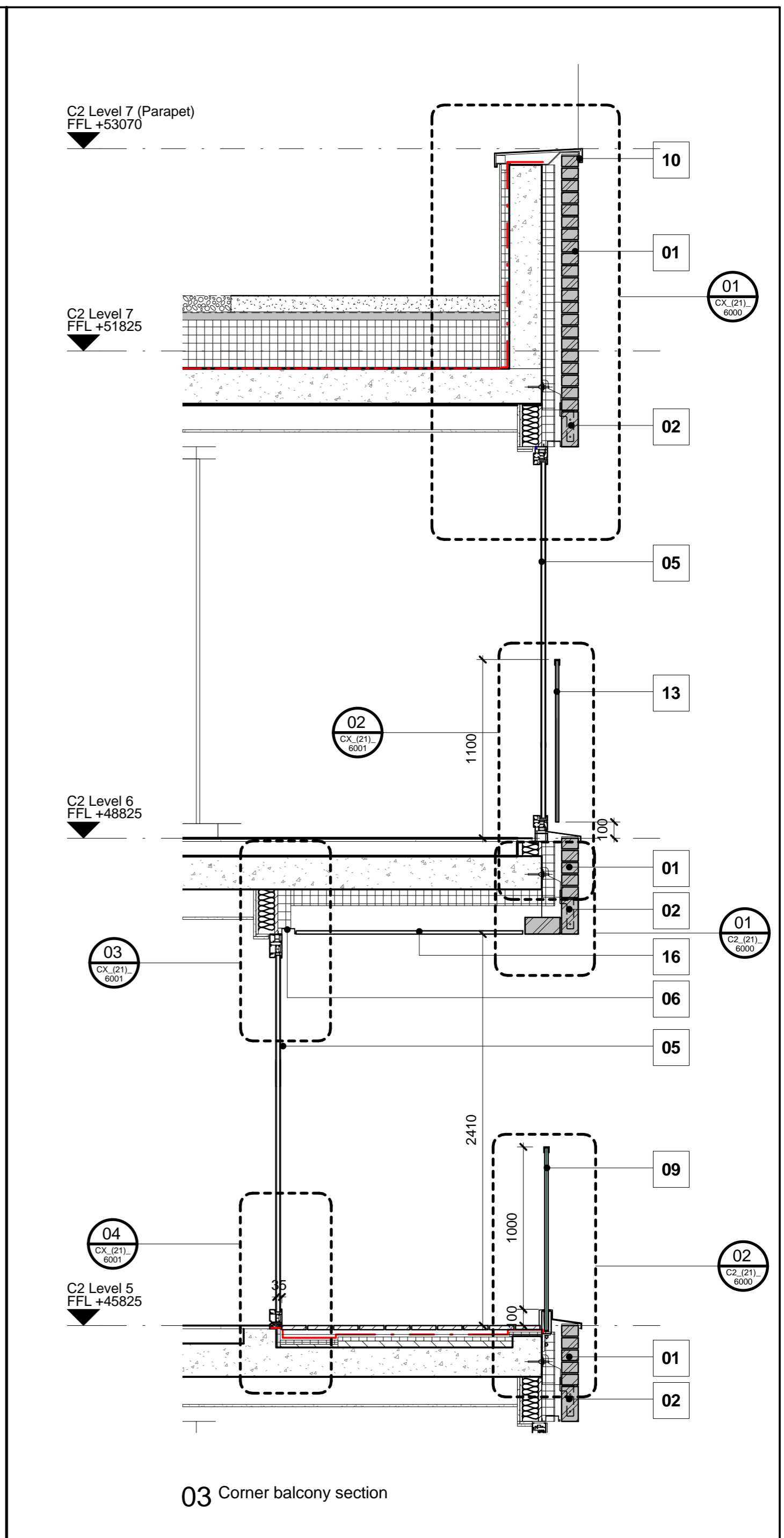
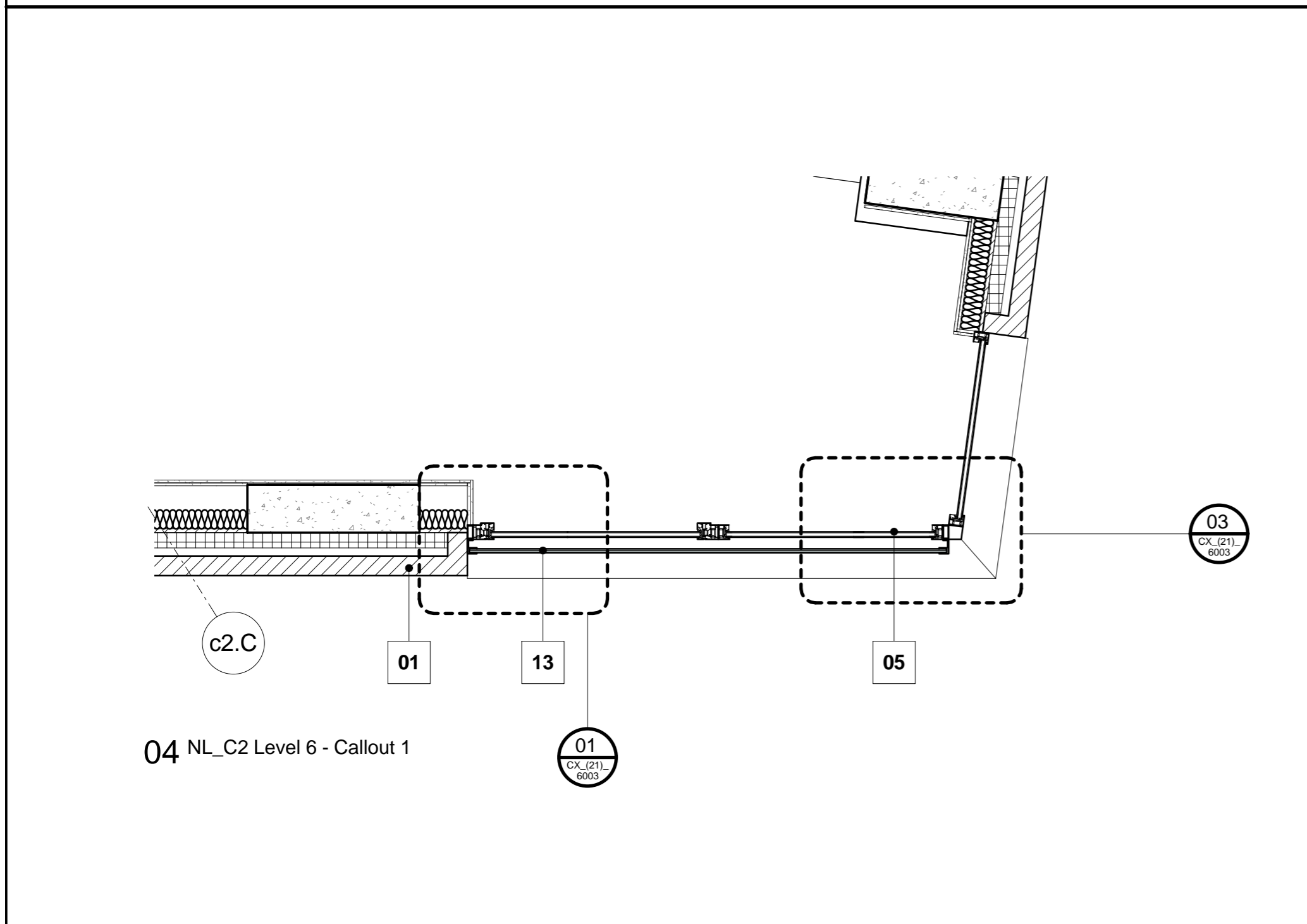


01 BUILDING C2_SOUTH-WEST ELEVATION - Callout 1

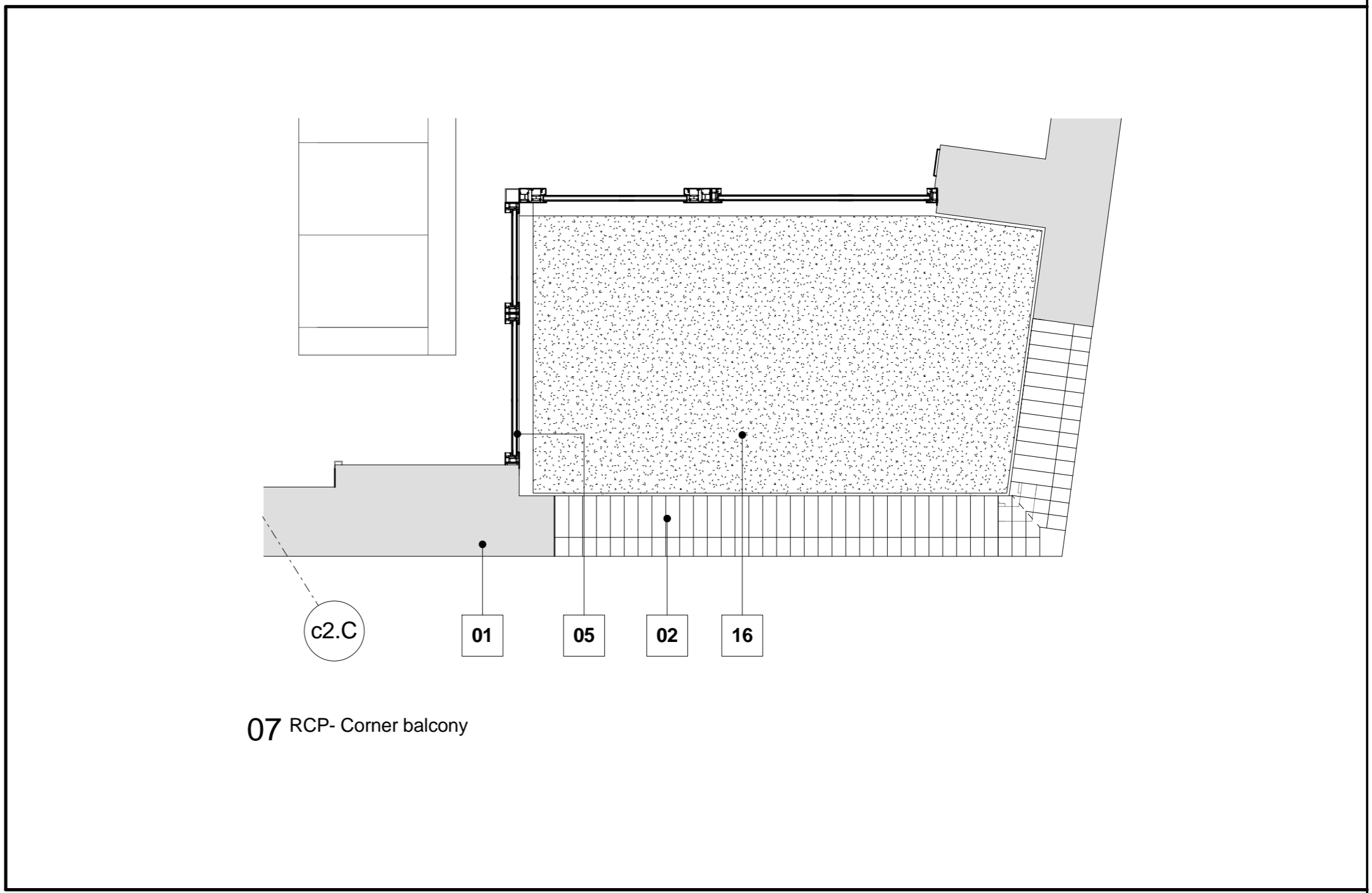
02 Copy of C1 & C2 - South Elevation - Callout 1



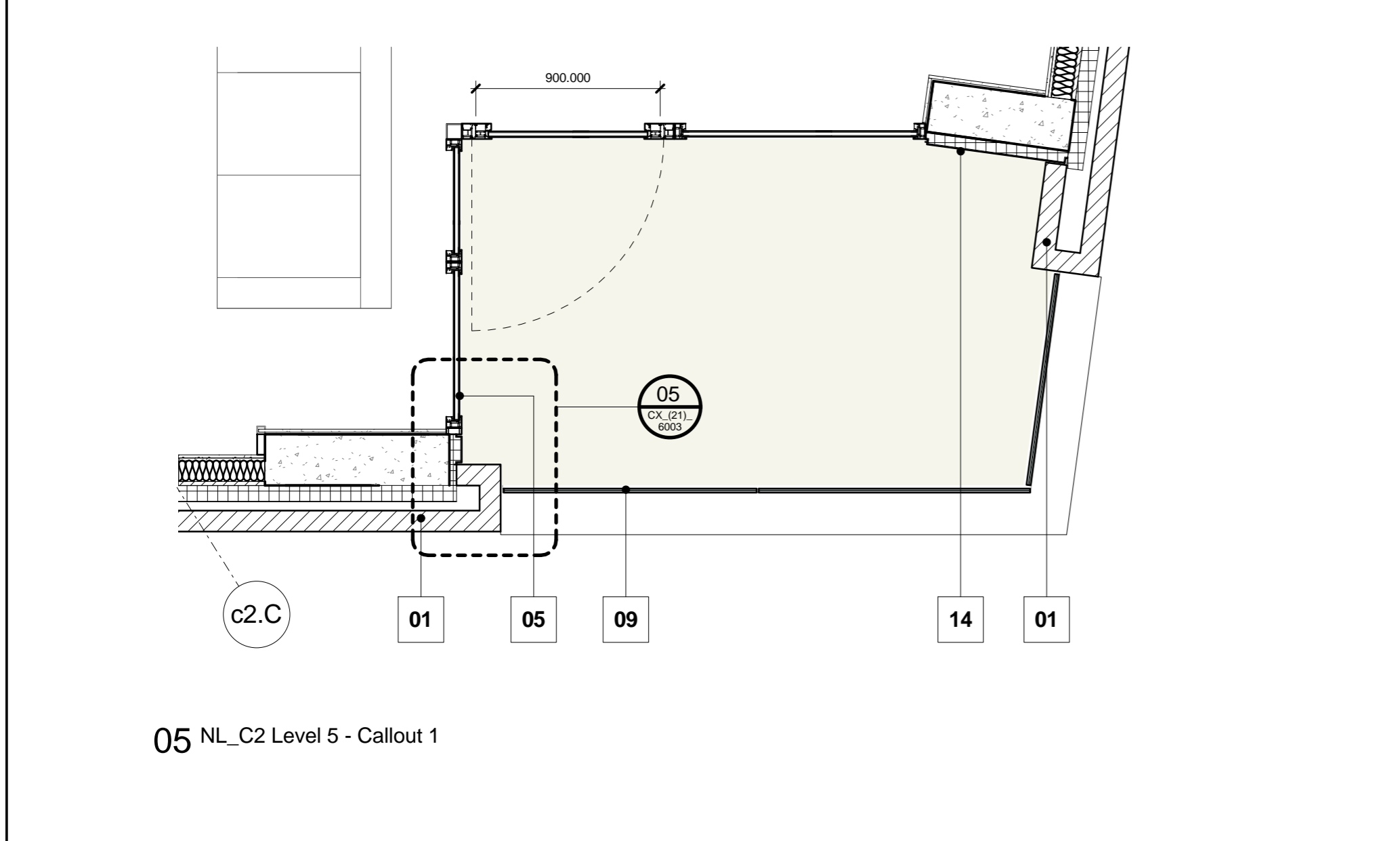
03 Corner balcony section



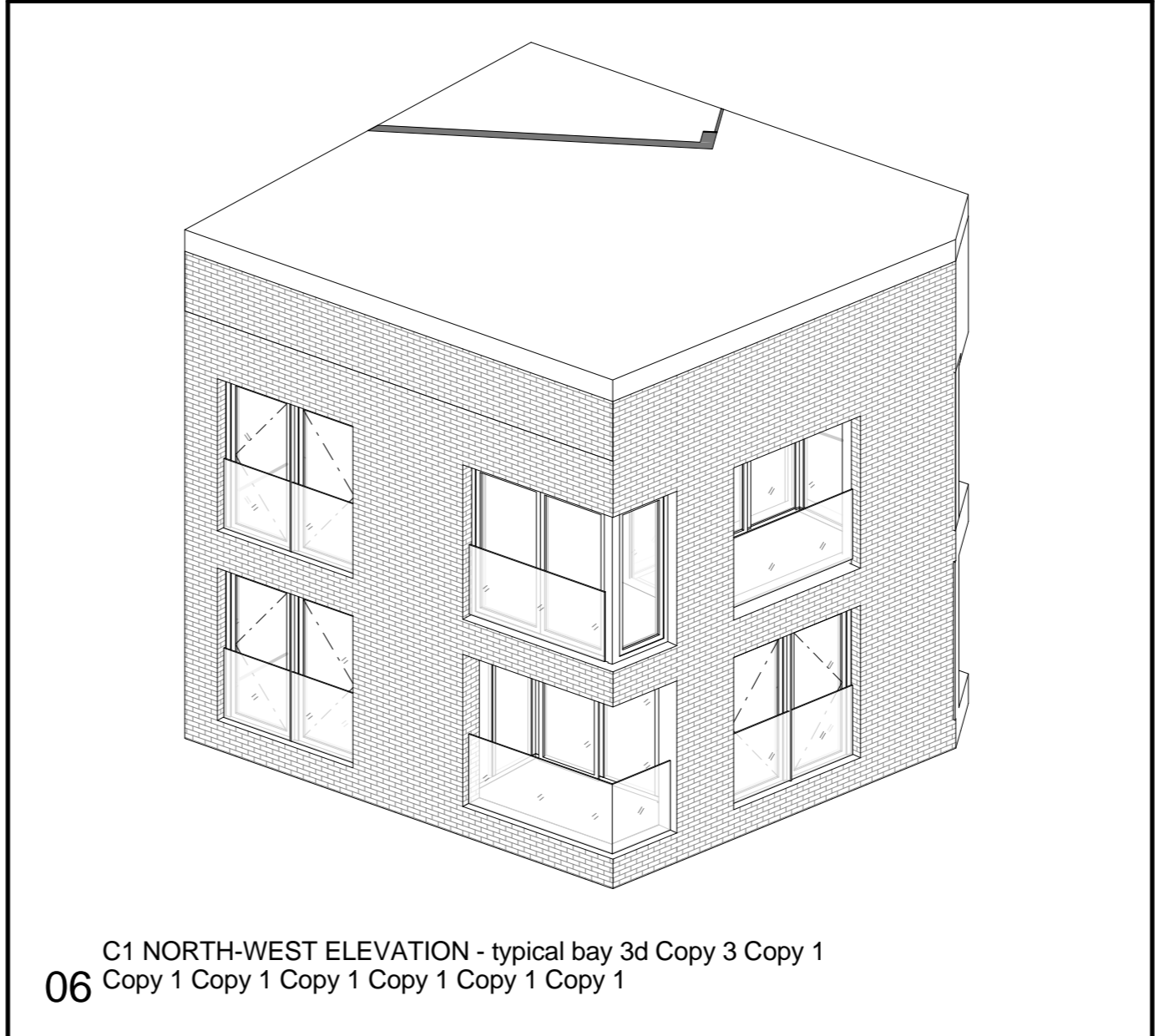
04 NL_C2 Level 6 - Callout 1



07 RCP- Corner balcony



05 NL_C2 Level 5 - Callout 1



C1 NORTH-WEST ELEVATION - typical bay 3d Copy 3 Copy 1
06 Copy 1 Copy 1 Copy 1 Copy 1 Copy 1 Copy 1

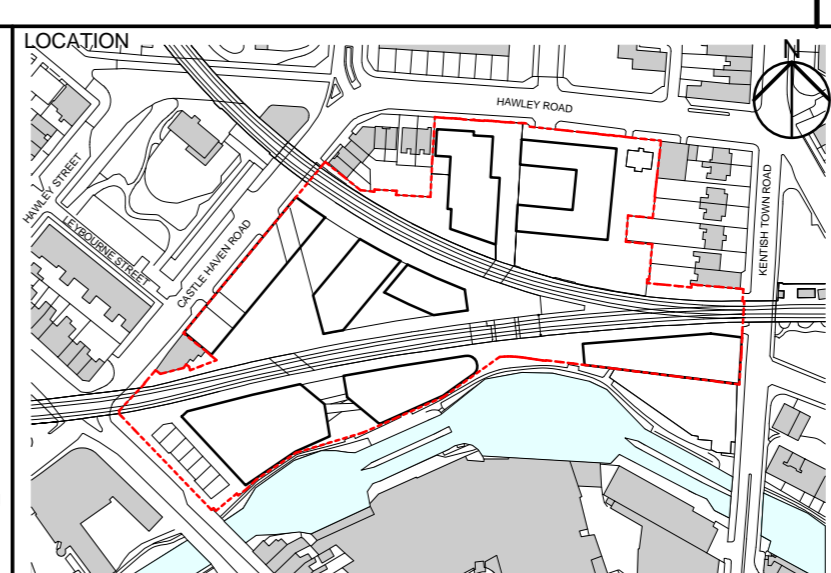
01	Facing brickwork as F10/111
02	Brick soldier course special as F10/111
03	Precast concrete facing as F31/113
04	Glazed Facing brickwork as F10/115
05	Window system as L10/331
06	Extruded aluminium perforated PPC metal MVHR grill
07	Insulated render board with directly applied render as H20/150A
08	Timber decking to balconies as Q55/111
09	Glass balustrade with stainless steel clamp and top rail as L30/553
10	Preformed PPC Aluminium coping as F30/780A
11	PPC Aluminium flashing as H31/111
12	Brick soldier course special as F10/111
13	Juliet balcony as L10/331 - supported off window system
14	Insulated PPC aluminium cladding
15	GRC on steel frame as H40/131
16	Through colour render board on hanging system as H20/150A

For rendered visual refer to C2_(21)_4051

REV	DATE	DESCRIPTION
T01	26/06/15	Stage E Tender Issue

CONSULTANTS	
CLIENT:	Stanley Sidings
CONTRACTOR:	-
STRUCTURAL ENGINEER:	Walsh Group
MECHANICAL ENGINEER:	Hoare Lea
COST CONSULTANT:	Gardiner & Theobald
PROJECT MANAGER:	Gardiner & Theobald
ACOUSTIC CONSULTANT:	Anup
TRANSPORT CONSULTANT:	Anup
PLANNING CONSULTANT:	Gerald Eve
LANDSCAPE ARCHITECT:	Fabrik
CDM CO-ORDINATOR:	MSA Safety

NOTE
1. Do not scale from this drawing.
2. All dimensions to be checked on site by the contractor and such dimensions to be his responsibility.
3. Report all drawing errors, omissions and discrepancies to the architect.
4. This document may be issued in an uncontrolled CAD format to enable others to use it as background information to make alterations and/or additions. In that instance the file will be accompanied by a PDF version. It is for those making such alterations and additions to ensure that they make use of current background information or arising out of changes to background information which occur prior to alterations of additions being made.



ALLFORD HALL MONAGHAN MORRIS			
ARCHITECTS Ltd 5-23 OLD STREET, LONDON, EC1V 9HL TEL 020 7251 5261 FAX 020 7251 5123 WEB WWW.AHMM.CO.UK			
job title C2 CORNER BALCONY AND WINDOW			
drawing title / location			
C2 CORNER BALCONY AND WINDOW			
drawn by	checked	scale	status
NL	KH	1 : 25 @ A1	TENDER
project	building	class	drawing number
14045	C2_(21)_	4006	T01
			revision