

This Photograph shows as existing



Cell Site: CTIL 148390

Site Location: Academic House
24-28 Oval Road
London
NW1 7DJ

NGR: E 528550 N 183981



Telefonica

MONO #

CTIL

Image Prepared For:
London
In association with:
Mono Consultants Ltd
0161 839 8840

This Photograph shows as proposed

Proposed installation
(not visible from this point)



Camera
Location &
Direction

Antenna
Location

Viewpoint: Looking West from Jamestown Road

Camera to antenna distance: @ 59m

Camera setting 35mm focal length: 27

Photographs: MV Imaging Ltd

Date : 17/02/15

Structure: 1no free standing antenna support system,
2no wall mounted antenna support poles.

1no cabinet support grille,
enclosed within 2m high screen,

coloured to match adjacent plant room.

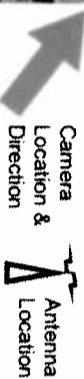
Antenna Spec: 6no panel antennas at u/s 24.1m AGL,
coloured to match adjacent plant room.

MV Imaging Ltd
Thatcham
Berkshire
RG18 3DC
mark.vetta.imaging@live.co.uk
© MV Imaging Ltd

Google earth



This Photograph shows as existing



Viewpoint: Looking North from Oval Road
 Camera to antenna distance: @ 168m
 Camera setting 35mm focal length: 52
 Photographs: MV Imaging Ltd
 Date : 17/02/15

Cell Site: CTIL 148390

Site Location: Academic House
 24-28 Oval Road
 London
 NW1 7DJ

NGR: E 528550 N 183981



This Photomontage shows as proposed



Proposed Installation

This Photomontage is for Illustrative Purposes Only

Structure: 1no free standing antenna support system,
 2no wall mounted antenna support poles,
 1no cabinet support grille,
 enclosed within 2m high screen,
 coloured to match adjacent plant room.
 Antenna Spec: 6no panel antennas at u/s 24.1m AGL,
 coloured to match adjacent plant room.

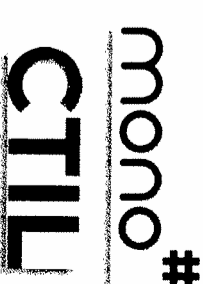
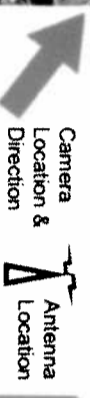
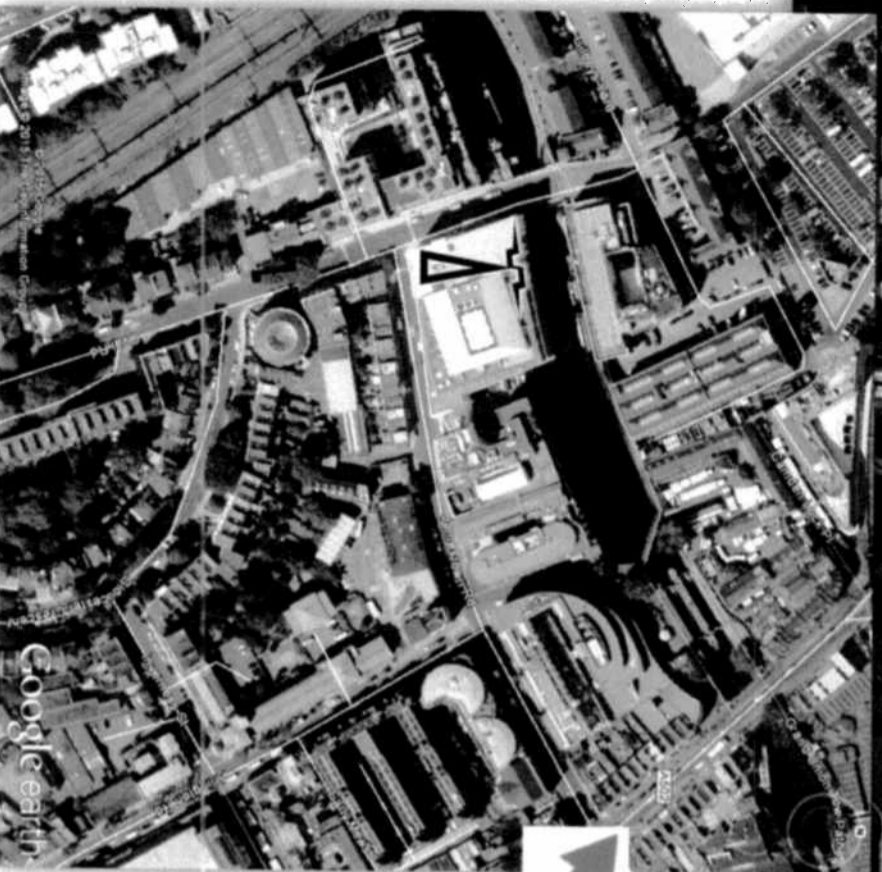


Image Prepared For:
 London
 In association with:
 Mono Consultants Ltd
 0161 839 8840

MV Imaging Ltd
 Thatcham
 Berkshire
 RG18 3DC
 mark.vella.imaging@live.co.uk
 © MV Imaging Ltd

This Photograph shows as existing



Viewpoint: Looking North from Oval Road
 Camera to antenna distance: @ 67m
 Camera setting 35mm focal length: 52
 Photographs: MV Imaging Ltd
 Date : 17/02/15

Cell Site: CTIL 148390
 Site Location: Academic House
 24-28 Oval Road
 London
 NW1 7DJ
 NGR: E 528550 N 183981



This Photomontage shows as proposed

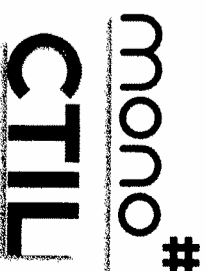
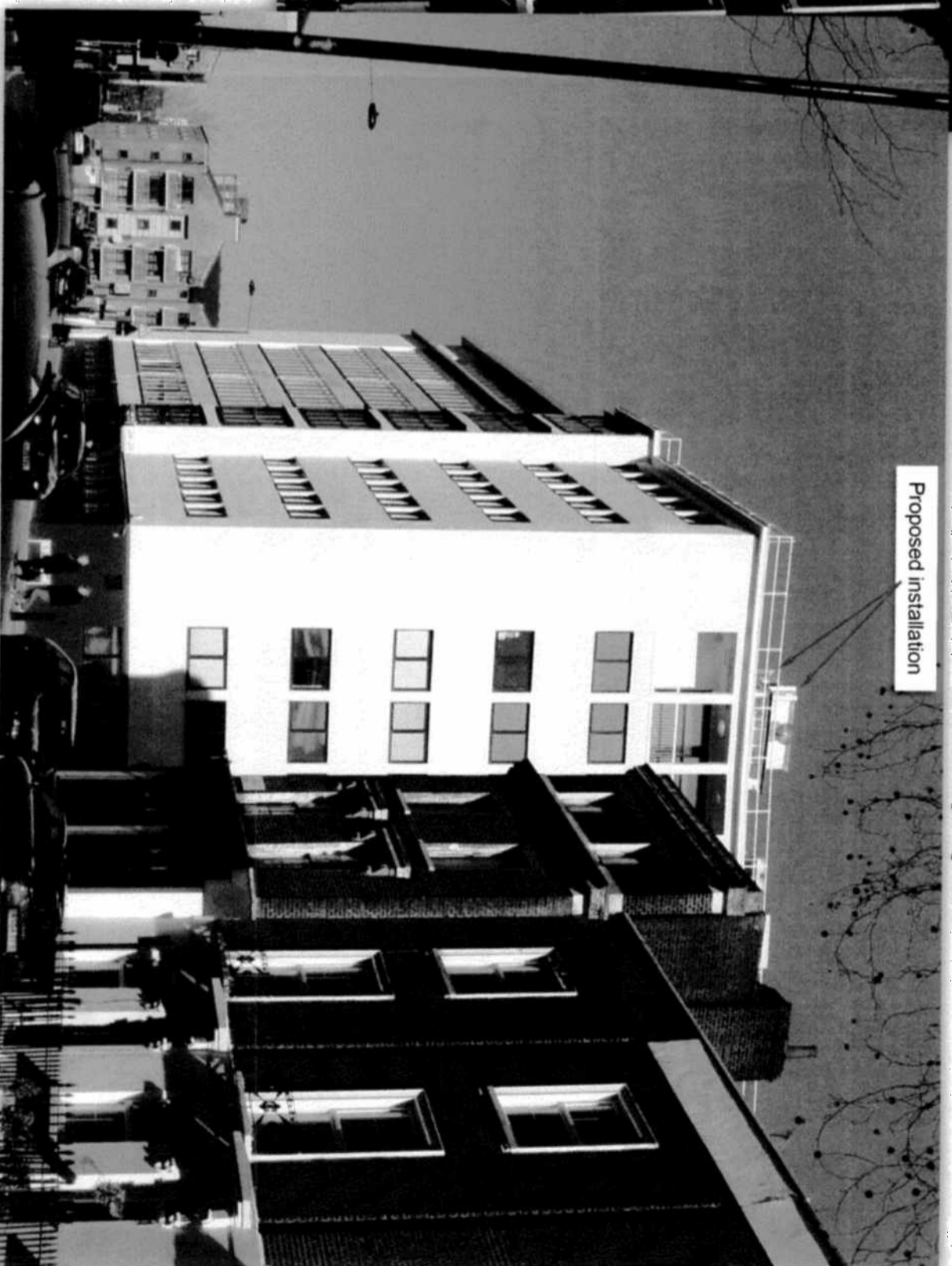


Image Prepared For:
 London
 In association with:
 Mono Consultants Ltd
 0161 839 8840

This Photomontage is for Illustrative Purposes Only

Structure: 1no free standing antenna support system,
 2no wall mounted antenna support poles,
 1no cabinet support grillage,
 enclosed within 2m high screen,
 coloured to match adjacent plant room.
 Antenna Spec: 6no panel antennas at u/s 24.1m AGL,
 coloured to match adjacent plant room.

This Photograph shows as existing



Cell Site: CTIL 148390

Site Location: Academic House
24-28 Oval Road
London
NW1 7DJ

NGR: E 528550 N 183981



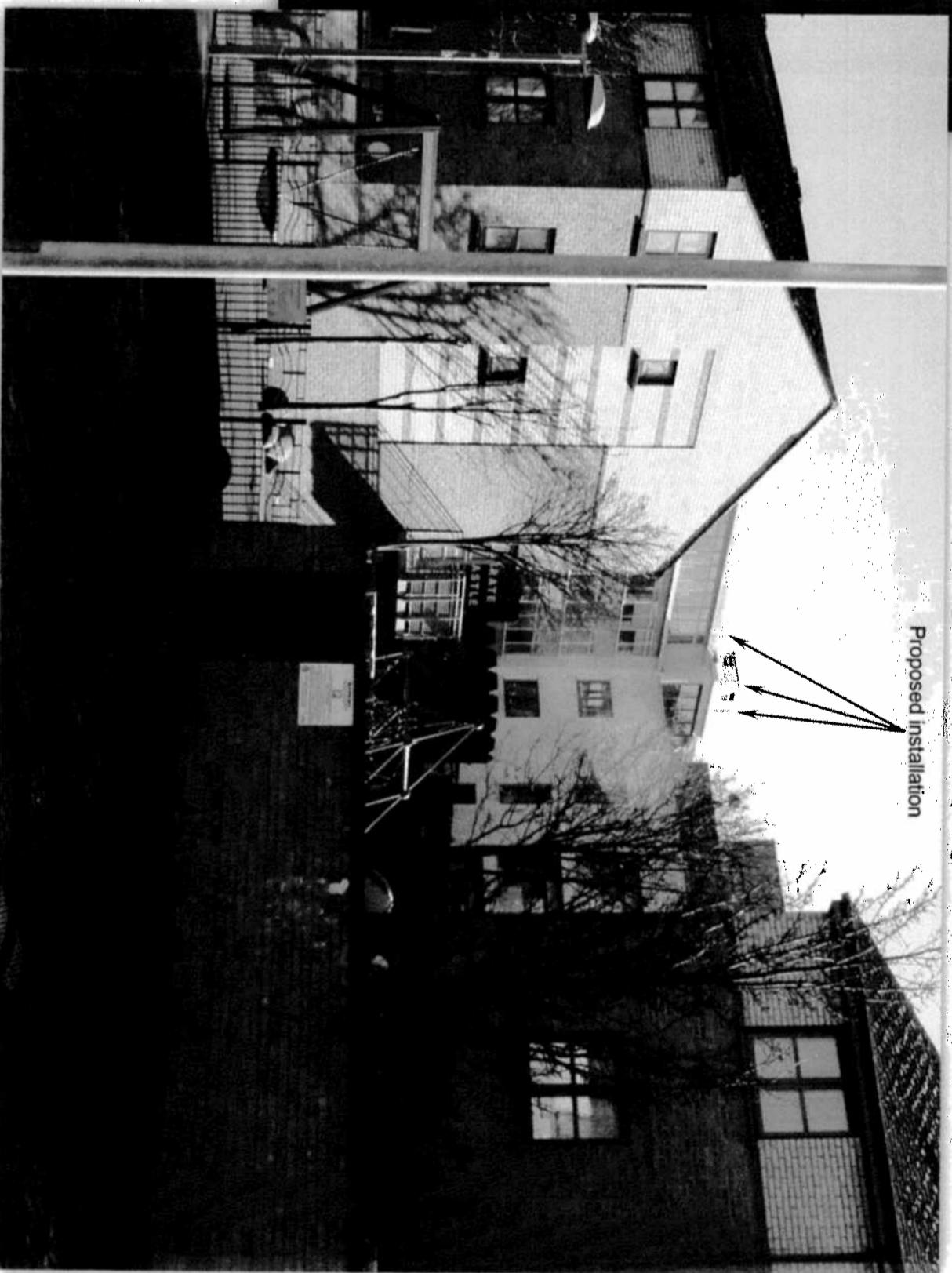
Telefonica

MONO #

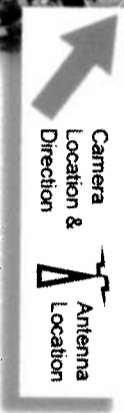
CTIL

Image Prepared For:
London
In association with:
Mono Consultants Ltd
0161 839 8840

This Photomontage shows as proposed



Camera Location & Direction
Antenna Location



Viewpoint: Looking Southeast from Gilbeys Yard

Camera to antenna distance: @ 120m

Camera setting 35mm focal length: 52

Photographs: MV Imaging Ltd

Date : 17/02/15

This Photomontage is for Illustrative Purposes Only

Structure: 1no free standing antenna support system,
2no wall mounted antenna support poles,

1no cabinet support grillage,

enclosed within 2m high screen,

coloured to match adjacent plant room.

Antenna Spec: 6no panel antennas at u/s 24.1m AGL,

coloured to match adjacent plant room.

MV Imaging Ltd
Thatcham
Berkshire
RG18 3DD
mark.vetta.imaging@live.co.uk
© MV Imaging Ltd

Google earth

This Photograph shows as existing



Camera
Location &
Direction



Viewpoint: Looking Southwest from Chalk Farm Road

Camera to antenna distance: @ 224m

Camera setting 35mm focal length: 52

Photographs: MV Imaging Ltd

Date : 17/02/15

Cell Site: CTIL 148390

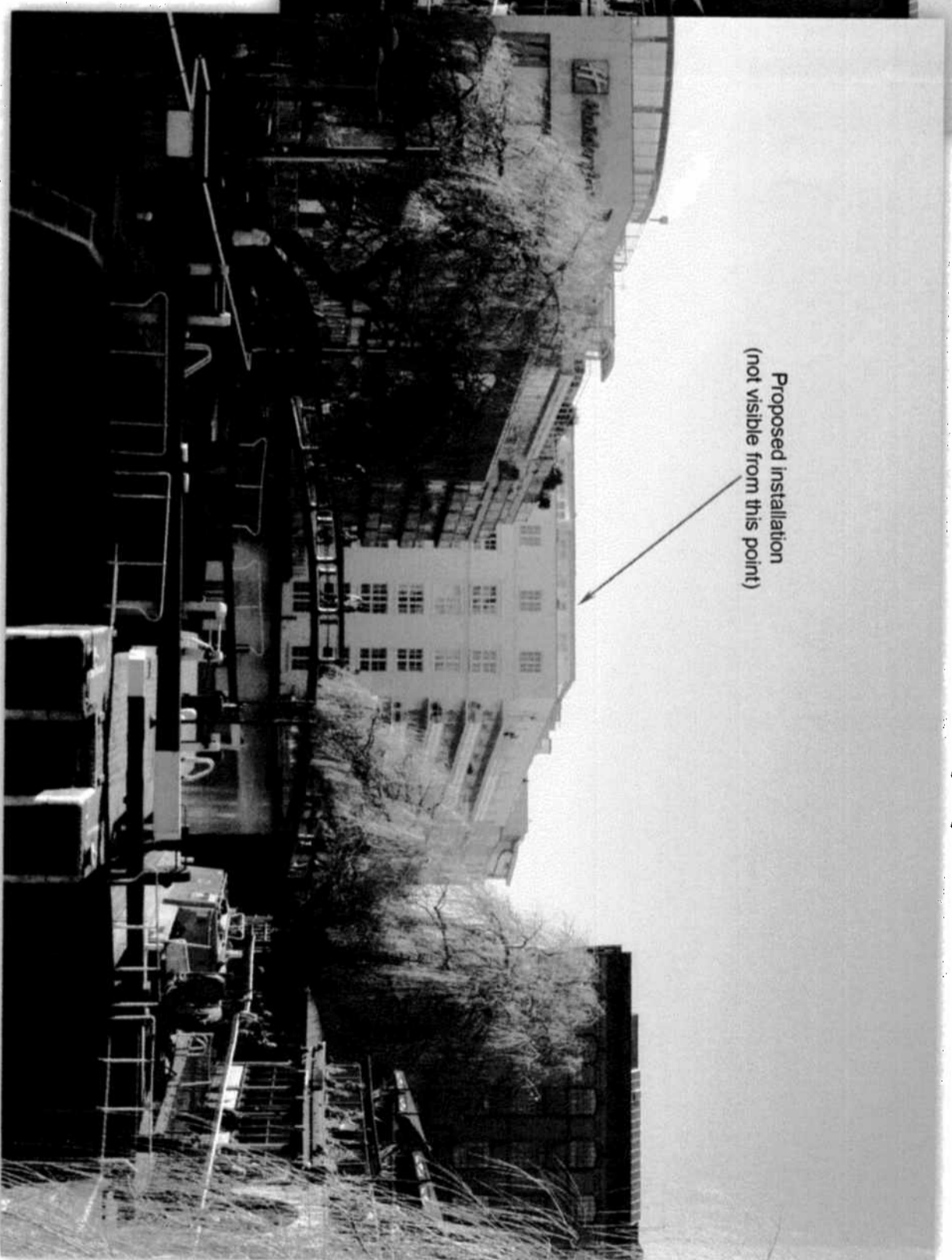
Site Location: Academic House
24-28 Oval Road
London
NW1 7DJ

NGR: E 528550 N 183981



Telefonica

This Photograph shows as proposed



Proposed installation
(not visible from this point)

Structure: 1no free standing antenna support system,
2no wall mounted antenna support poles,
1no cabinet support grillage,
enclosed within 2m high screen,
coloured to match adjacent plant room.

Antenna Spec: 6no panel antennas at u/s 24.1m AGL,
coloured to match adjacent plant room.

MONO #

CTIL

Image Prepared For:
London
In association with:

Mono Consultants Ltd
0161 839 8840

MV Imaging Ltd
Thatcham
Berkshire
RG18 3DC
mark.yetta.imaging@live.co.uk
© MV Imaging Ltd