

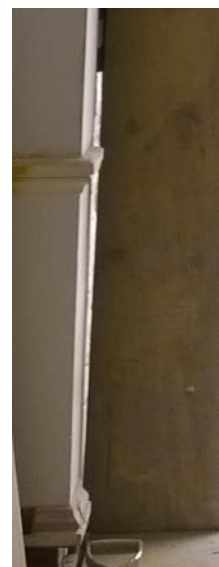
OPTIONS REVIEW AT EXTERNAL OPENING WITH LGAZED FEATURES WITHIN 1800mm of potential escapees using basement external fire escape stairs

**Window at location (1)**

Cornice, high level picture rail affected by shutter box  
Dado, skirtings affected by guide rails.  
Maintaining fire rating integrity will require these all to be cut.



**External door at location (A)**  
Impact as above if shutter (opt 2)



OPTIONS REVIEW AT EXTERNAL OPENING WITH LGAZED FEATURES WITHIN 1800mm of potential escapees using basement external fire escape stairs

**New glass screen between escape route (G.47) and seminar (G.06)**

Client is prepared to omit as room well daylight on two sides.

Door opening at location of photo taken from to be widened. Option 1 would see screen omitted, single door glazed ( extent limited by acceptable FR and 30 minutes integrity so TBC) , plus new wide door, probably 1200 leaf in original but enlarged opening.



OPTIONS REVIEW AT EXTERNAL OPENING WITH LGAZED FEATURES WITHIN 1800mm of potential escapees using basement external fire escape stairs

**Typical fire shutter details**



Components can be powder coated. It may be possible to conceal both head box and guide rails by plasterboard cladding, they will additionally project into the room geometry.

Control panel and fire alarm interfaces ( assume 200 x 200) need to be with close proximity of the shutter.

