

Safety, Health and Environment Information

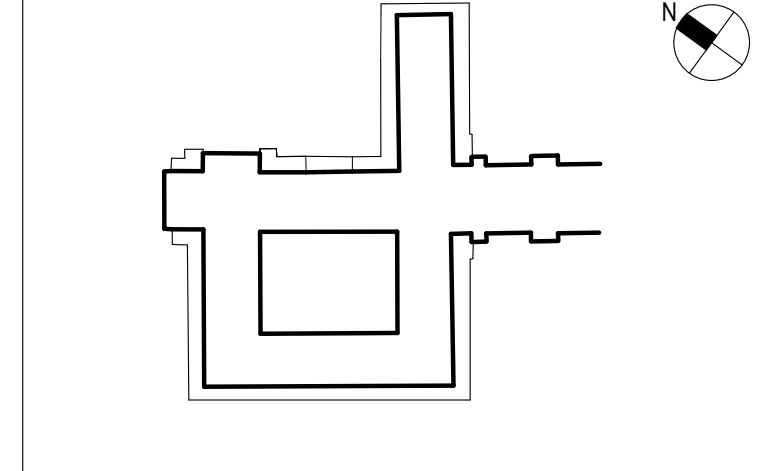
The significant unusual hazards / risks associated with this type of work are noted as:

CI	-	NONE
CII	-	NONE
OPERATION AND MAINTENANCE		
OI	-	NONE
OII	-	NONE
DISMANTLING/DEMOLITION		
DI	-	NONE
DII	-	NONE

NOTE - TO BE READ IN CONJUNCTION WITH RISK REGISTER

NOTE  
 CS: SKIRTING TO DDA WC G.17 WAS SKN-1 NOW SKN-2  
 FOR SETTING OUT DRAWINGS REFER TO  
 28731-SOAS-A-PLN-GEN-00-242

REV	DATE	DESCRIPTION	DWN	CHK/APP
1	03.10.14	CONSTRUCTION ISSUE: PARTITIONS UPDATED, SKIRTINGS AND DETAILS SHOWN	DLN	CHK/APP
2	14.11.14	LEVELS UPDATED/ LOUVRES & GRILLES REFERENCES ADDED WALL TYPE LEGEND SHORTENED & FIRE RATINGS ADDED, SOME WALL AND SKIRTING TYPES CHANGED, PARTITIONS ACOUSTIC & FIRE REQUIREMENTS NOTE ADDED, FIRE & ACOUSTIC BARRIER NOTE ADDED.	GM	LT/MD
3	18.12.14	DOOR CHANGES SINCE CONTRACT ISSUE T2 AND NOTES ADDED AS HIGHLIGHTED REGARDING EXISTING SKIRTING ETC. RE: LBC SUBMISSION IN ABEYANCE NOTES ADDED. LIFT SHAFT UPDATED. G30 ENTRANCE ARRANGEMENT UPDATE	JU	EF/MD
4	13.03.15	NOTES ADDED & MOVABLE PARTITION WALL IN G33 REMOVED, ROOMS G33 G25 AND G27 BECOME ONE ROOM. REFER TO GRAHAM'S EMAIL ON 21/01/15	DL	EF/MD
5	30.03.15	SKIRTING ABEYANCE NOTE OMITTED, REVIEW AS REQUESTED AT CHANGE CONTROL MEETING UNDER TAKEN. WALL TYPE 11 ADDED, DRAWINGS UPDATED AS HIGHLIGHTED.	AB	EF/MD
7	28.08.15	WALL TYPE 19 ADDED AS HIGHLIGHTED	HB	EF/CF
8	11.09.15	INFORMATION UPDATED TO REFLECT G.25 CLIENT CHANGE. GLASS DOUBLE SLIDING DOOR ADDED TO G.25. NEW PANELED SCREEN TO G.25 RISER AND AMENDED DIMS TO G.25 RIF AND RAMP. TEAPPOINT REMOVED FROM G.10	DL	EF/CF
9	20.02.16	TYPE 2 PARTITION ADDED TO EXISTING OPENING. 60 MINUTE FIRE RATING REQUIRED.	DL	EF/FP
10	05.05.16	GLAZED WALL IN G.47 CORRIDOR REMOVED. DOOR G.06A REMOVED. DOORS G.06B AND G.47A ADDED. SKETCH NUMBERS 157, 158 & 160 ADDED. NOTE ADDED TO WALL TYPE 3 IN G.05	JH	EF/FP



PROJECT STATUS: **CONSTRUCTION**

CLIENT: **GRAHAM CONSTRUCTION**

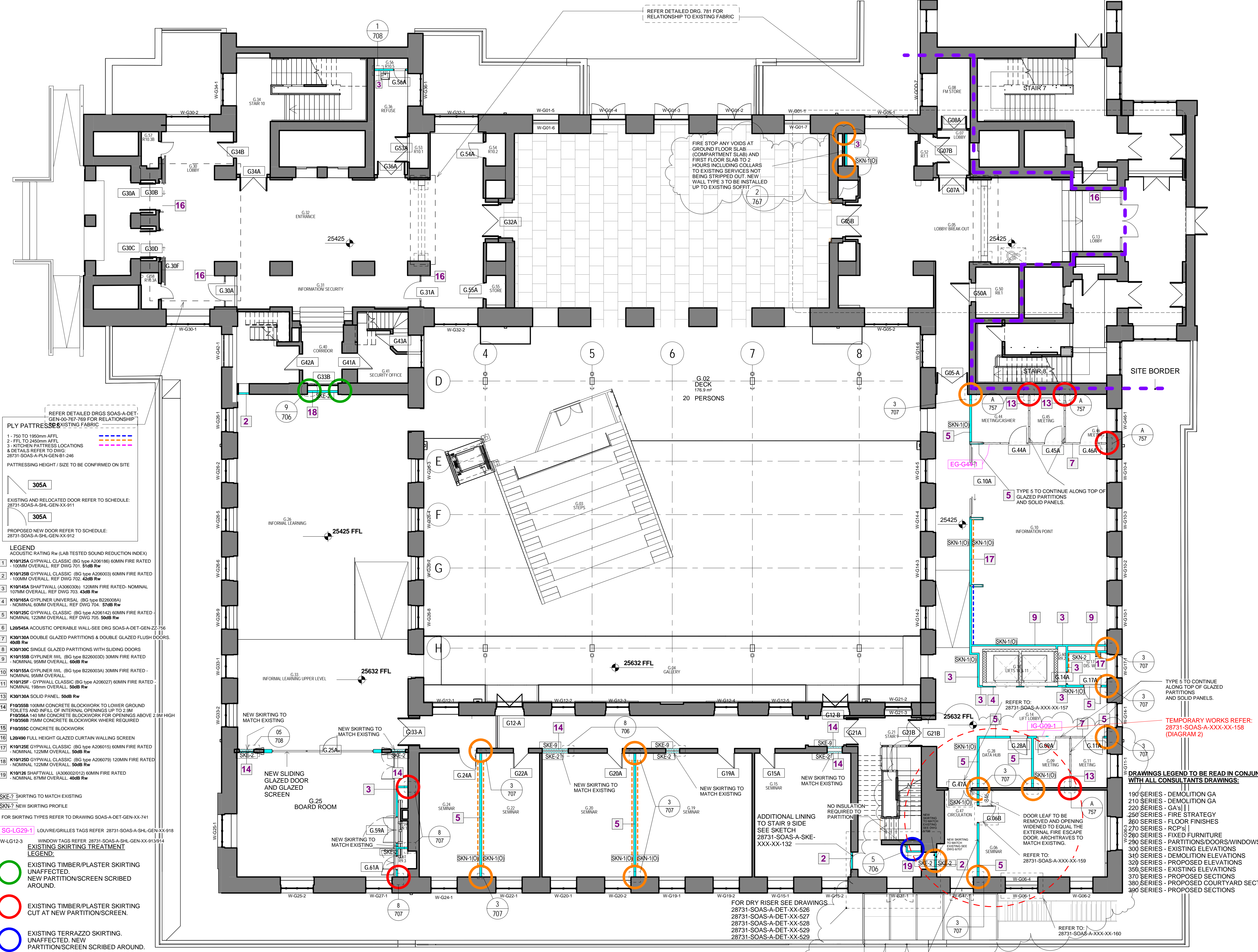
**mace**  
 155 Moorgate, London, EC2M 6XB  
 www.macegroup.com

PROJECT TITLE: **SOAS INTO SENATE HOUSE MALET STREET LONDON, WC1E 7HU**

DRAWING TITLE: **GROUND FLOOR DOOR/WINDOW/PARTITION KEY PLAN**

PROJECT NO.	28731	DRAWN BY	DC	DATE	25/07/13
CHECK BY	LT	DATE	25/07/13		
APP'D BY	-	DATE	25/07/13		
PROJECT CODE	SOAS - A - PLN - GEN - 00 - 292	VIEW TYPE	VIEW CAT.	LEVEL	DWG. NO.
SHEET NO.	1 of 1	SCALE	1:100	ORIG. SHEET SIZE	REV.
			@ A1	C	10

INFORMATION HANDLING CLASSIFICATION: **UNRESTRICTED**



REFER DETAILED DRGS SOAS-A-DET-GEN-00-767-769 FOR RELATIONSHIP TO EXISTING FABRIC

PLY PATTERNS TO EXISTING FABRIC

- 1 - 750 TO 1950mm AFFL
- 2 - FFL TO 2450mm AFFL
- 3 - KITCHEN PATTERNS LOCATIONS & DETAILS REFER TO DWG: 28731-SOAS-A-PLN-GEN-00-246

PATTERNING HEIGHT / SIZE TO BE CONFIRMED ON SITE

305A

EXISTING AND RELOCATED DOOR REFER TO SCHEDULE: 28731-SOAS-A-SHL-GEN-XX-911

305A

PROPOSED NEW DOOR REFER TO SCHEDULE: 28731-SOAS-A-SHL-GEN-XX-912

- LEGEND
- ACOUSTIC RATING Rw (LAB TESTED SOUND REDUCTION INDEX)
- 1 K10125A GYPWALL CLASSIC (BG type A206186) 60MIN FIRE RATED - 100MM OVERALL. REF DWG 701. 51dB Rw
  - 2 K10125B GYPWALL CLASSIC (BG type A206003) 60MIN FIRE RATED - 100MM OVERALL. REF DWG 702. 42dB Rw
  - 3 K10145A SHAFTHALL (A306030) 120MIN FIRE RATED-NOMINAL 107MM OVERALL. REF DWG 703. 43dB Rw
  - 4 K10165A GYPLINER UNIVERSAL (BG type B229008A) - NOMINAL 60MM OVERALL. REF DWG 704. 57dB Rw
  - 5 K10125C GYPWALL CLASSIC (BG type A206142) 60MIN FIRE RATED-NOMINAL 123MM OVERALL. REF DWG 705. 50dB Rw
  - 6 L20545A ACOUSTIC OPERABLE WALL-SEE DRG SOAS-A-DET-GEN-ZZ-756
  - 7 K30130A DOUBLE GLAZED PARTITIONS & DOUBLE GLAZED FLUSH DOORS. 40dB Rw
  - 8 K30130C SINGLE GLAZED PARTITIONS WITH SLIDING DOORS
  - 9 K10155B GYPLINER IWL (BG type B229003D) 30MIN FIRE RATED - NOMINAL 95MM OVERALL. 60dB Rw
  - 10 K10155A GYPLINER IWL (BG type B226000A) 30MIN FIRE RATED - NOMINAL 95MM OVERALL
  - 11 K10125F GYPWALL CLASSIC (BG type A206027) 60MIN FIRE RATED-NOMINAL 198mm OVERALL. 50dB Rw
  - 12 K30130A SOLID PANEL. 50dB Rw
  - 13 F10355B 100MM CONCRETE BLOCKWORK TO LOWER GROUND TOILETS AND INFILL OF INTERNAL OPENINGS UP TO 2.9M
  - 14 F10356A 140 MM CONCRETE BLOCKWORK FOR OPENINGS ABOVE 2.9M HIGH
  - 15 F10355C CONCRETE BLOCKWORK
  - 16 L20499 FULL HEIGHT GLAZED CURTAIN WALLING SCREEN
  - 17 K10125E GYPWALL CLASSIC (BG type A206015) 60MIN FIRE RATED - NOMINAL 122MM OVERALL. 50dB Rw
  - 18 K10125D GYPWALL CLASSIC (BG type A206079) 120MIN FIRE RATED - NOMINAL 122MM OVERALL. 50dB Rw
  - 19 K10126 SHAFTHALL (A306002/012) 60MIN FIRE RATED - NOMINAL 67MM OVERALL. 40dB Rw

- SKE-7 SKIRTING TO MATCH EXISTING
- SKN-7 NEW SKIRTING PROFILE
- FOR SKIRTING TYPES REFER TO DRAWING SOAS-A-DET-GEN-XX-741
- SG-LG29-1 LOUVRE/GRILLES TAGS REFER 28731-SOAS-A-SHL-GEN-XX-918
- W-LG12-3 WINDOW TAGS REFER 28731-SOAS-A-SHL-GEN-XX-913/914
- EXISTING SKIRTING TREATMENT LEGEND:
- EXISTING TIMBER/PLASTER SKIRTING UNAFFECTED. NEW PARTITION/SCREEN SCRIBED AROUND.
  - EXISTING TIMBER/PLASTER SKIRTING CUT AT NEW PARTITION/SCREEN.
  - EXISTING TERRAZZO SKIRTING. UNAFFECTED. NEW PARTITION/SCREEN SCRIBED AROUND.
  - EXISTING SKIRTING & DADO UNAFFECTED. NEW PARTITION/SCREEN SCRIBED AROUND.

**CHANGES BETWEEN T2 AND C3:**  
 1- NEW DOOR 120MIN FR ADD TO LOCATION: G.59A, G.61A. 2- NEW DOOR 120MIN FR CHANGE LOCATION AND SIZE, IN LOCATION: G.14A.

REFER DETAILED DRGS 781 FOR RELATIONSHIP TO EXISTING FABRIC

FIRE STOP ANY VOIDS AT GROUND FLOOR SLAB (COMPARTMENT SLAB) AND FIRST FLOOR SLAB TO 2 HOURS INCLUDING COLLARS TO EXISTING SERVICES NOT BEING STRIPPED OUT. NEW WALL TYPE 3 TO BE INSTALLED UP TO EXISTING SOFFIT.

REFER TO 'SOAS-A-DET-GEN-XX-755' (PROPOSED DRY LINING DETAILS) FOR DETAILS OF FIRE AND ACOUSTIC BARRIERS BELOW SUSPENDED FLOORS AND BELOW HOLLOW POT SOFFITS.

THE ACOUSTIC AND FIRE RATING REQUIREMENT OF THE PARTITIONS MAY BE LESS THAN WHAT IS STATED IN THE SPECIFICATION, DEPENDING ON SPECIFIC LOCATION