

A

B

B

D

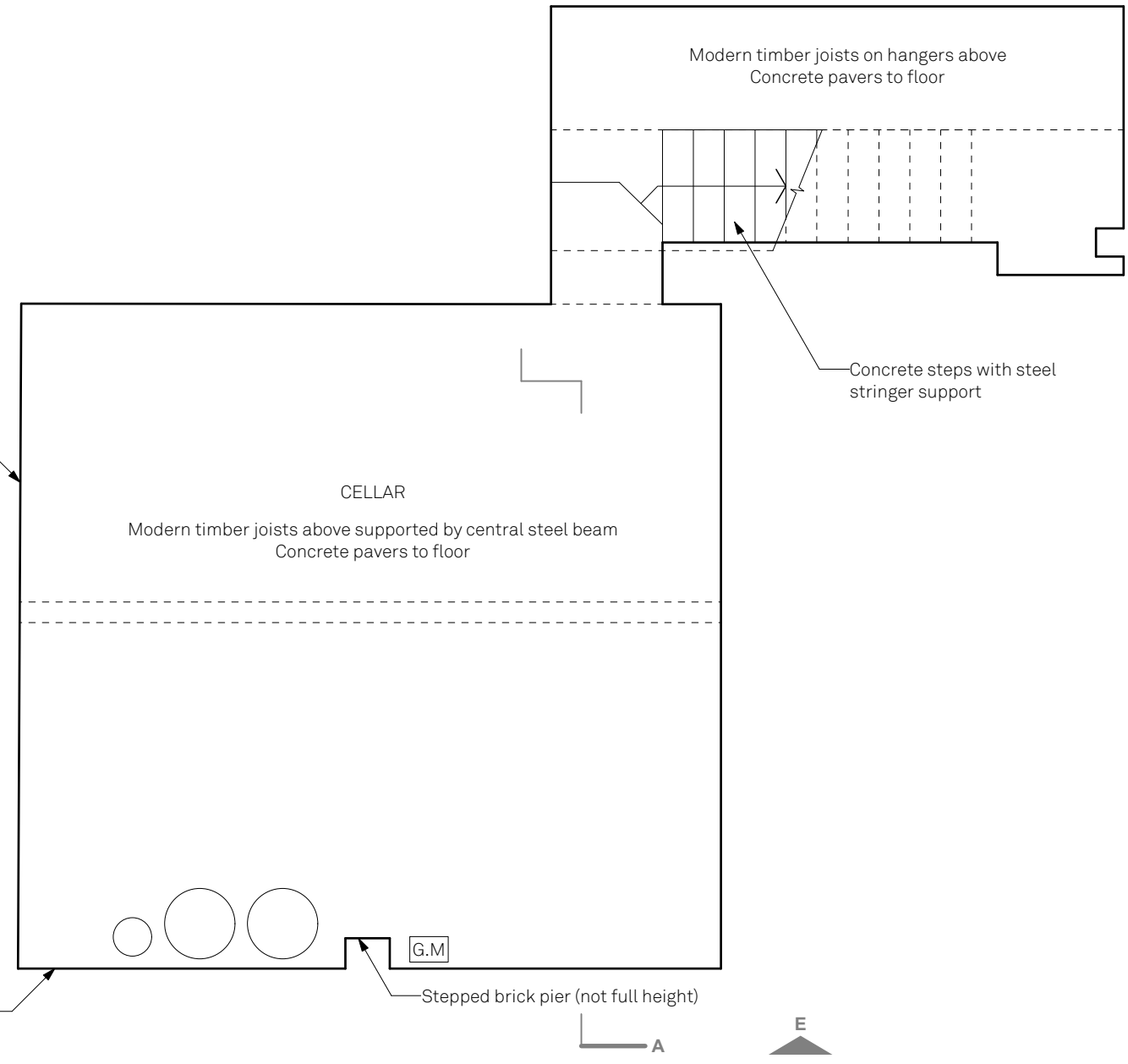
F

White painted brickwork walls throughout

C

C

Modern system boiler configuration with 2no. hot water tanks & expansion vessels



CELLAR
Modern timber joists above supported by central steel beam
Concrete pavers to floor

Modern timber joists on hangers above
Concrete pavers to floor

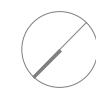
Concrete steps with steel stringer support

G.M.

Stepped brick pier (not full height)

A

E



UNIONARCHITECTS

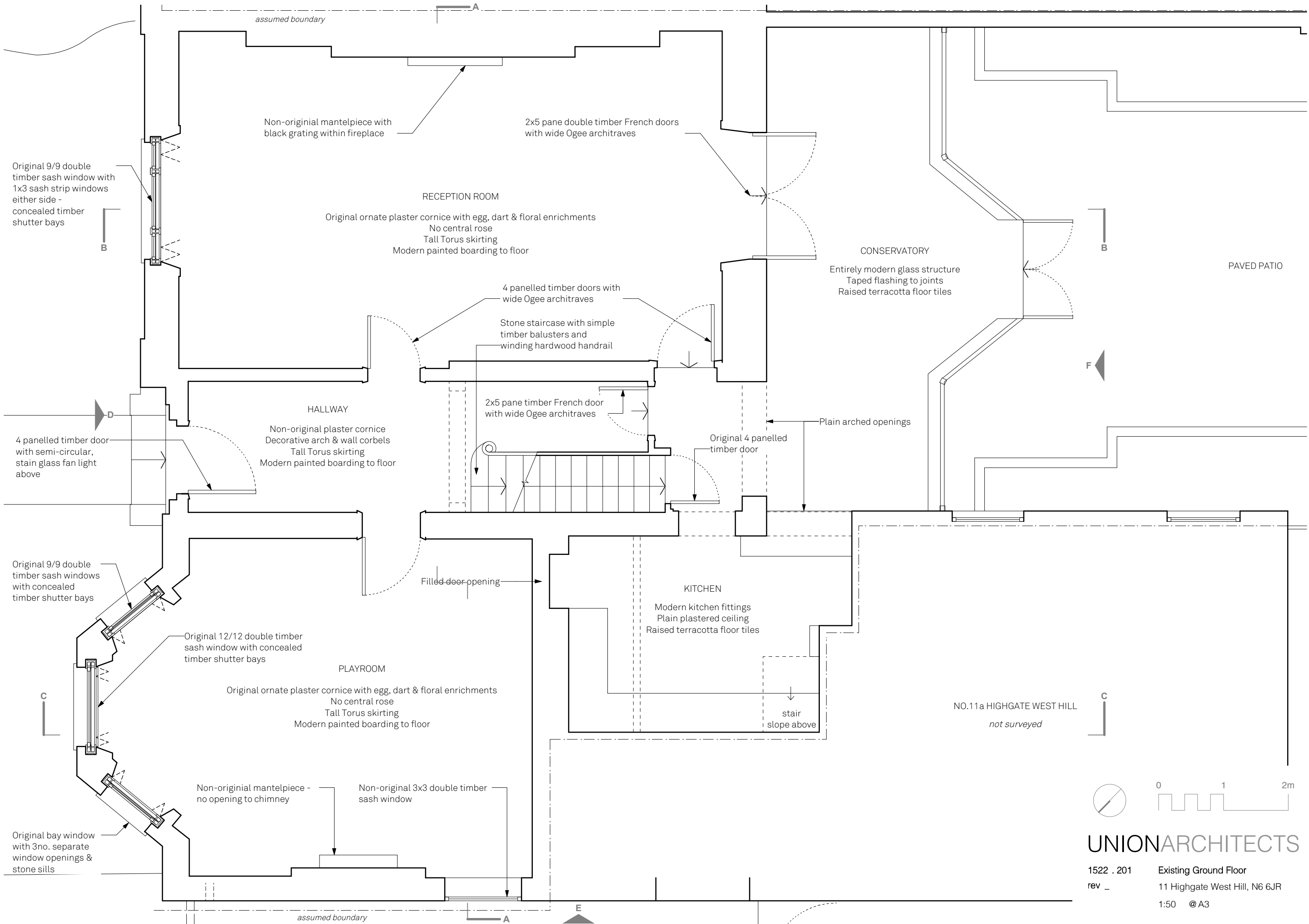
1522 . 200

rev _

Existing Cellar

11 Highgate West Hill, N6 6JR

1:50 @ A3



Original 9/9 double timber sash window with 1x3 sash strip windows either side - concealed timber shutter bays

4 panelled timber door with semi-circular, stain glass fan light above

Original 9/9 double timber sash windows with concealed timber shutter bays

Original bay window with 3no. separate window openings & stone sills

Non-original mantelpiece with black grating within fireplace

Non-original plaster cornice
Decorative arch & wall corbels
Tall Torus skirting
Modern painted boarding to floor

Original 12/12 double timber sash window with concealed timber shutter bays

Non-original mantelpiece - no opening to chimney

Non-original 3x3 double timber sash window

RECEPTION ROOM
Original ornate plaster cornice with egg, dart & floral enrichments
No central rose
Tall Torus skirting
Modern painted boarding to floor

4 panelled timber doors with wide Ogee architraves
Stone staircase with simple timber balusters and winding hardwood handrail

2x5 pane timber French door with wide Ogee architraves

Filled door opening

KITCHEN
Modern kitchen fittings
Plain plastered ceiling
Raised terracotta floor tiles

2x5 pane double timber French doors with wide Ogee architraves

CONSERVATORY
Entirely modern glass structure
Taped flashing to joints
Raised terracotta floor tiles

Plain arched openings

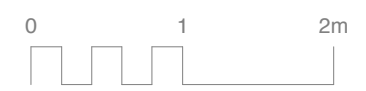
Original 4 panelled timber door

PLAYROOM
Original ornate plaster cornice with egg, dart & floral enrichments
No central rose
Tall Torus skirting
Modern painted boarding to floor

stair slope above

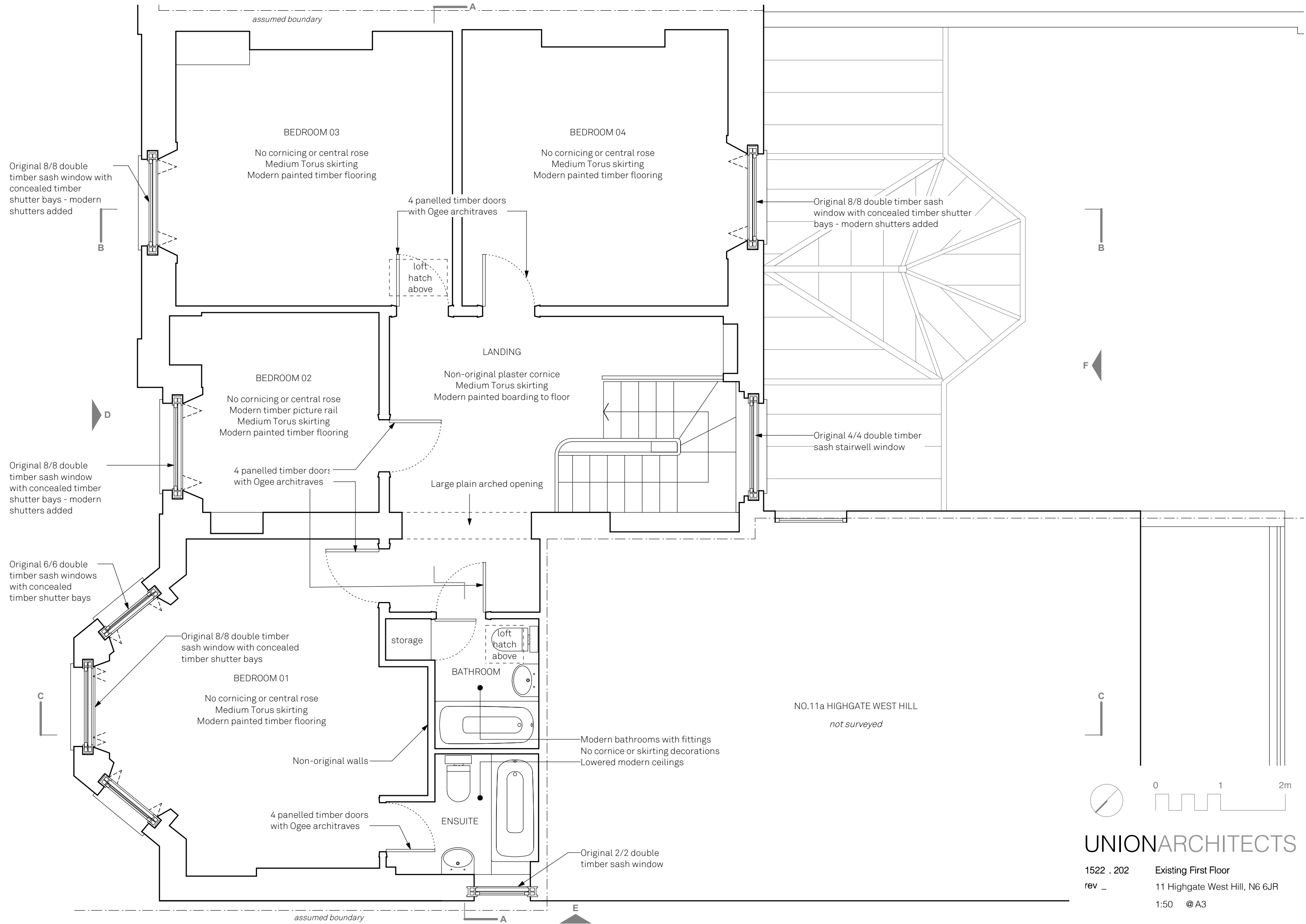
PAVED PATIO

NO.11a HIGHGATE WEST HILL
not surveyed



UNIONARCHITECTS

1522 . 201 Existing Ground Floor
rev _ 11 Highgate West Hill, N6 6JR
1:50 @ A3



assumed boundary

BEDROOM 03

No corncing or central rose
Medium Torus skirting
Modern painted timber flooring

BEDROOM 04

No corncing or central rose
Medium Torus skirting
Modern painted timber flooring

Original 8/8 double timber sash window with concealed timber shutter bays - modern shutters added

Original 8/8 double timber sash window with concealed timber shutter bays - modern shutters added

4 panelled timber doors with Ogee architraves

loft hatch above

LANDING

Non-original plaster cornice
Medium Torus skirting
Modern painted boarding to floor

BEDROOM 02

No corncing or central rose
Modern timber picture rail
Medium Torus skirting
Modern painted timber flooring

Original 4/4 double timber sash stairwell window

Original 8/8 double timber sash window with concealed timber shutter bays - modern shutters added

4 panelled timber doors with Ogee architraves

Large plain arched opening

Original 6/6 double timber sash windows with concealed timber shutter bays

Original 8/8 double timber sash window with concealed timber shutter bays

storage

loft hatch above

BEDROOM 01

No corncing or central rose
Medium Torus skirting
Modern painted timber flooring

BATHROOM

NO.11a HIGHGATE WEST HILL
not surveyed

Modern bathrooms with fittings
No cornice or skirting decorations
Lowered modern ceilings

Non-original walls

4 panelled timber doors with Ogee architraves

ENSUITE

Original 2/2 double timber sash window

assumed boundary

B

F

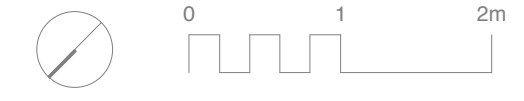
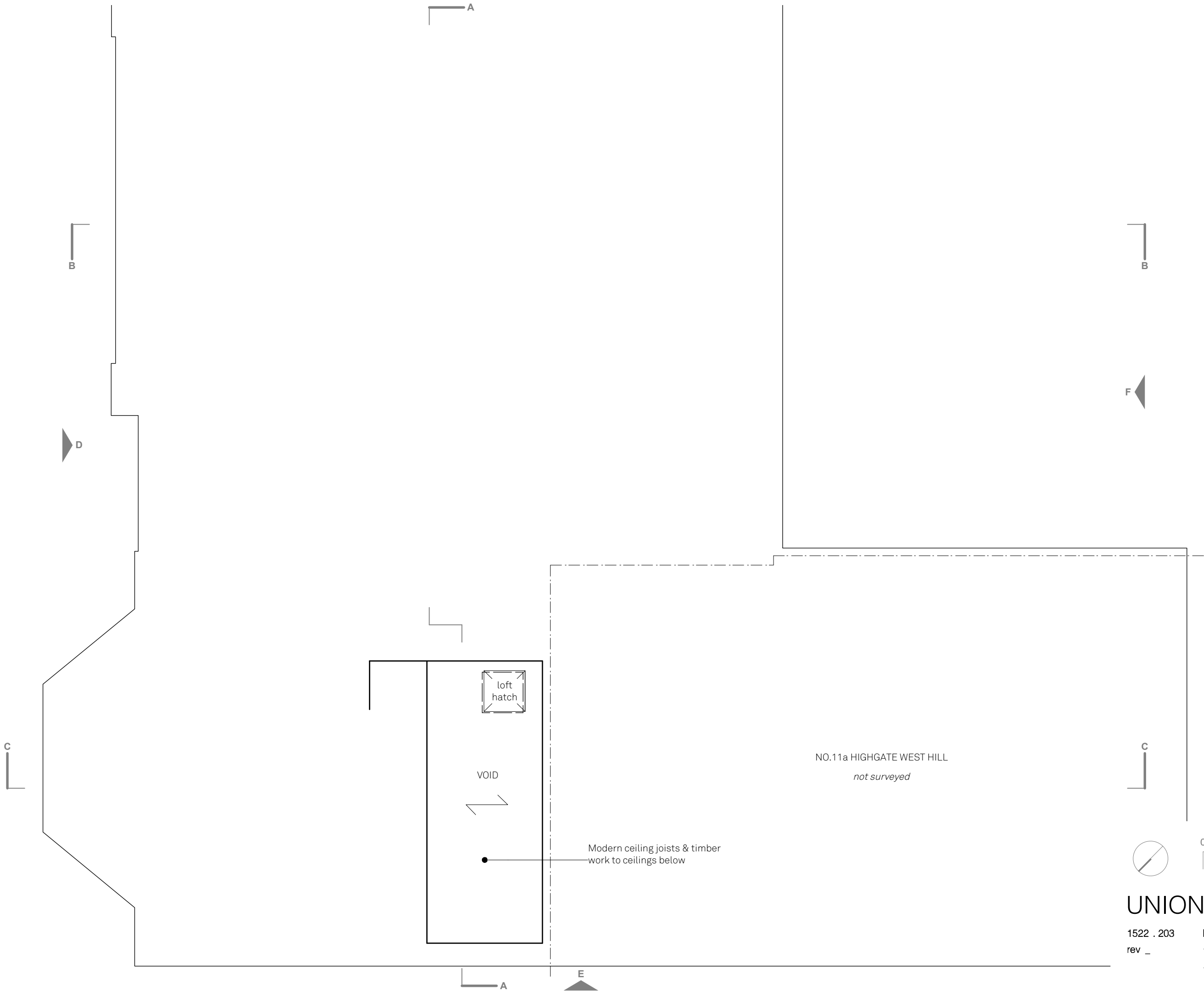
C



UNIONARCHITECTS

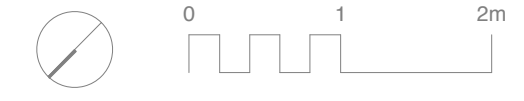
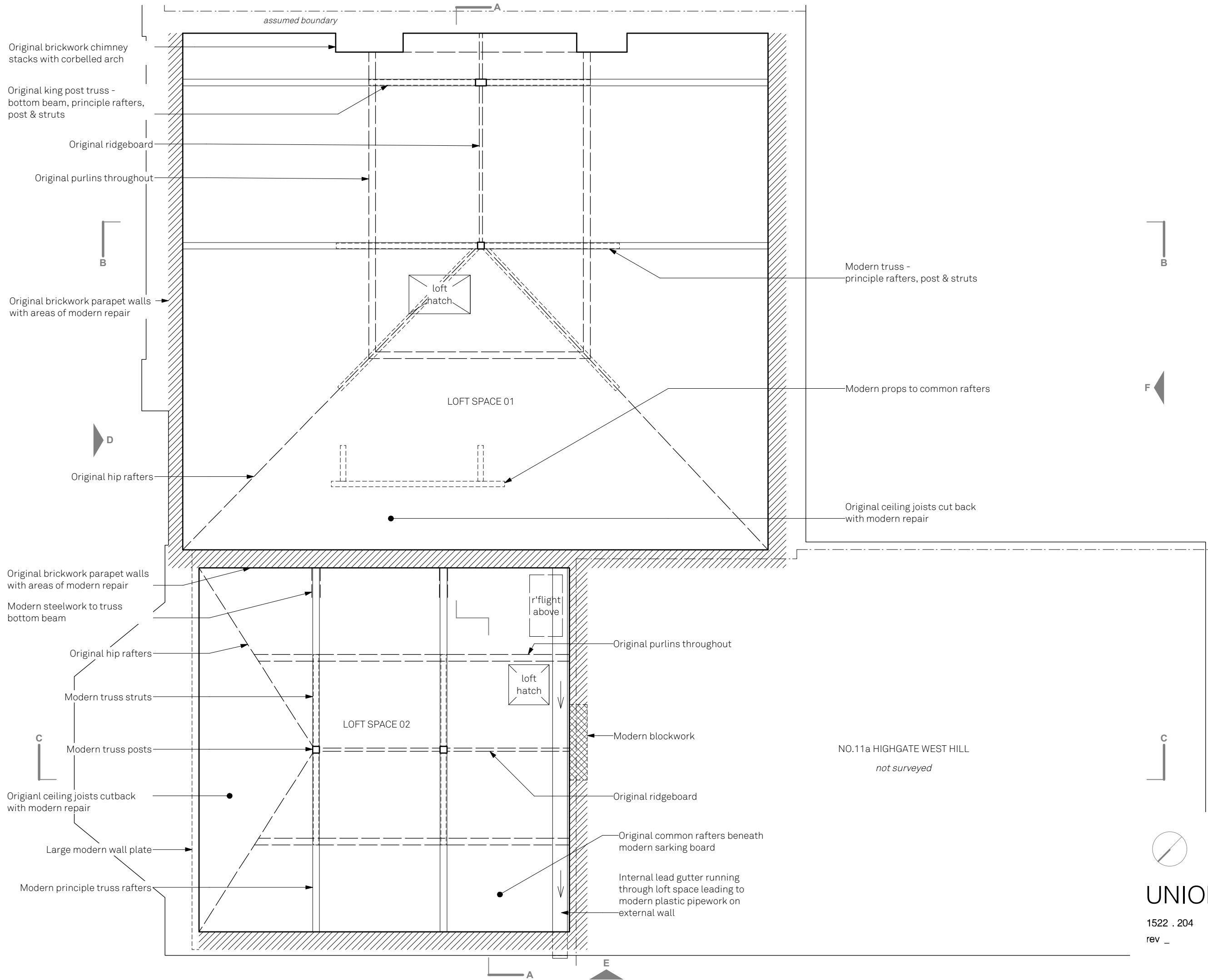
1522 . 202
rev _

Existing First Floor
11 Highgate West Hill, N6 6JR
1:50 @ A3



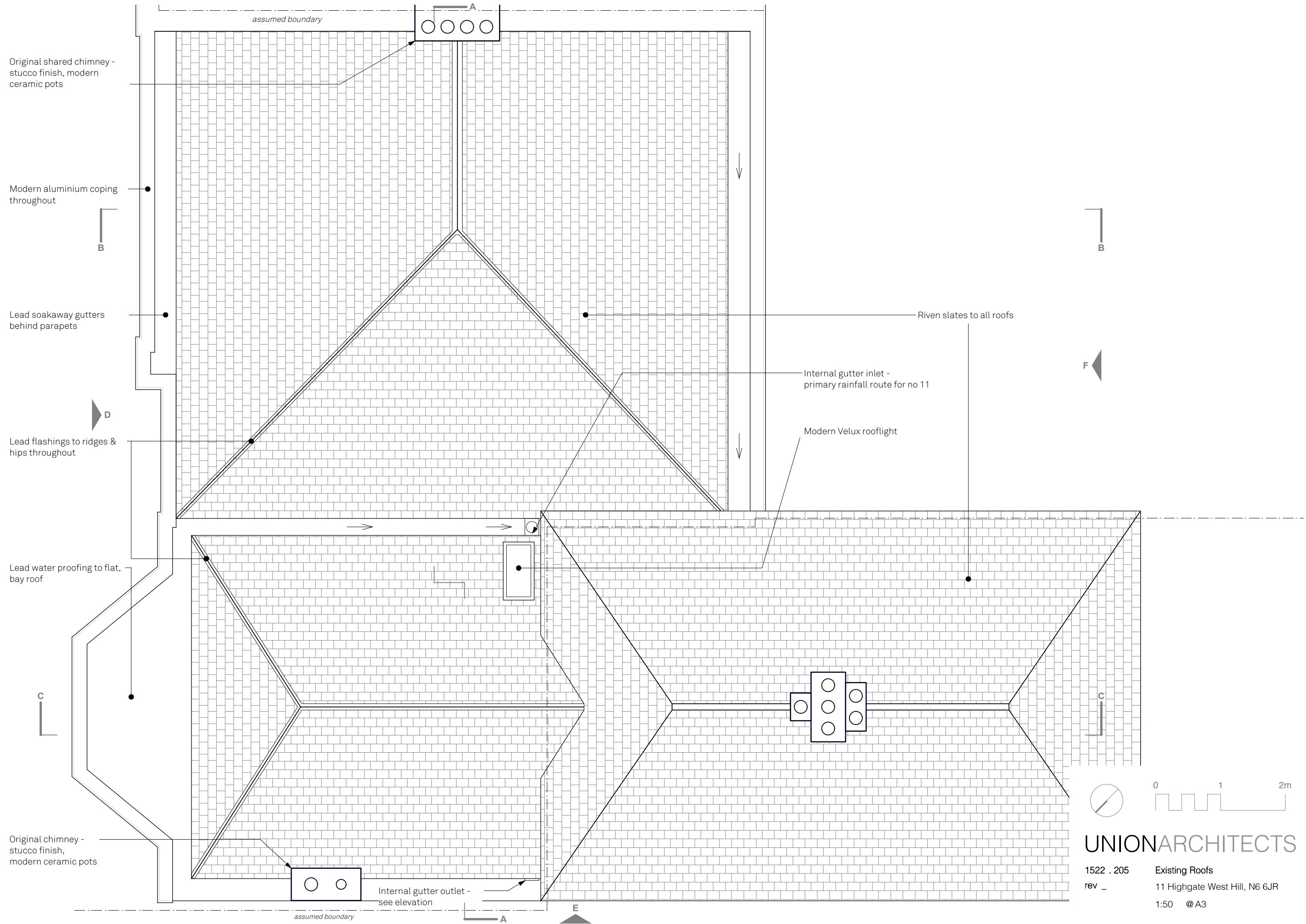
UNIONARCHITECTS

1522 . 203 Existing Sub Loft
rev _ 11 Highgate West Hill, N6 6JR
1:50 @ A3



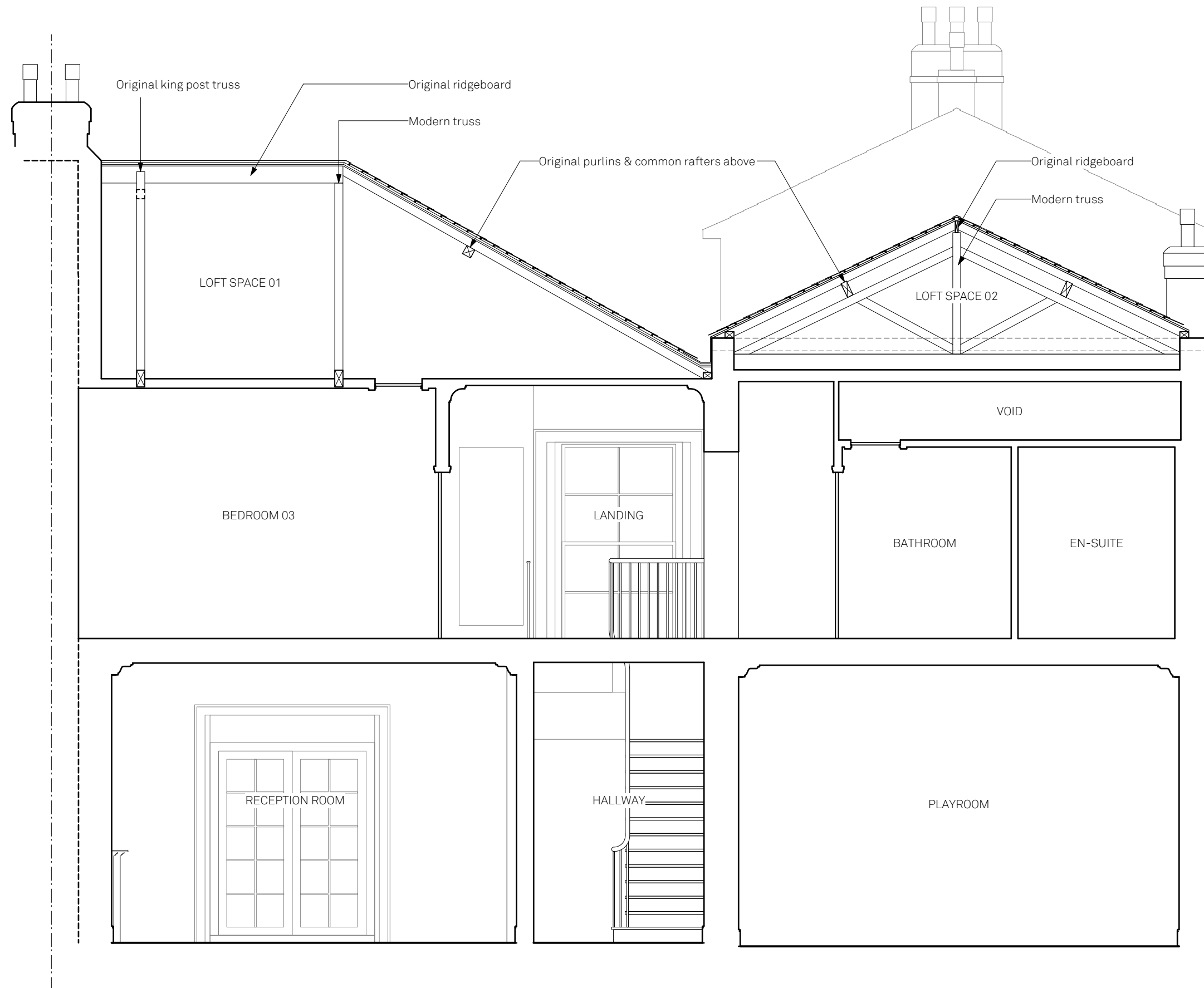
UNIONARCHITECTS

1522 . 204 Existing Lofts
 rev _ 11 Highgate West Hill, N6 6JR
 1:50 @ A3



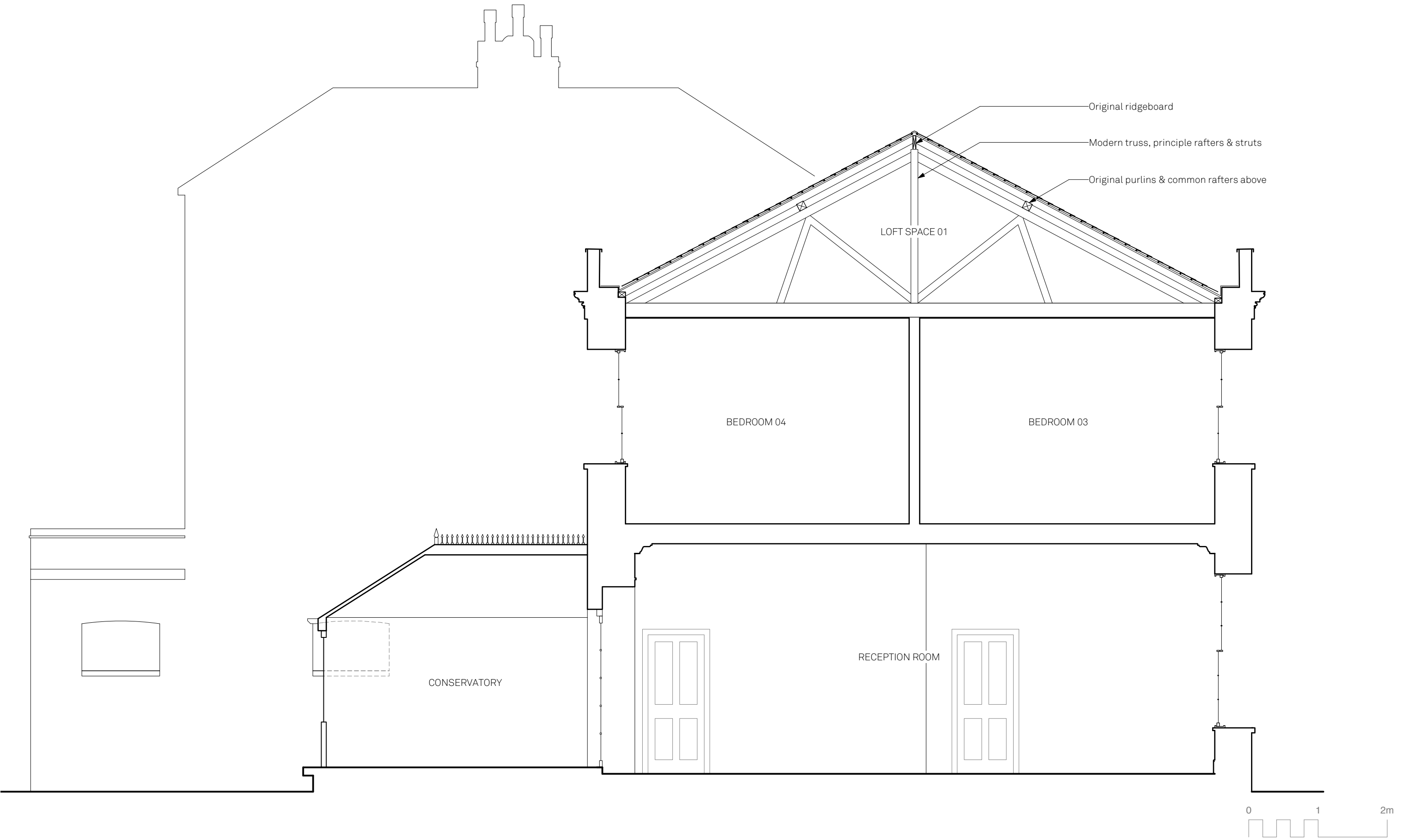
UNIONARCHITECTS

1522 . 205 Existing Roofs
 rev _ 11 Highgate West Hill, N6 6JR
 1:50 @ A3



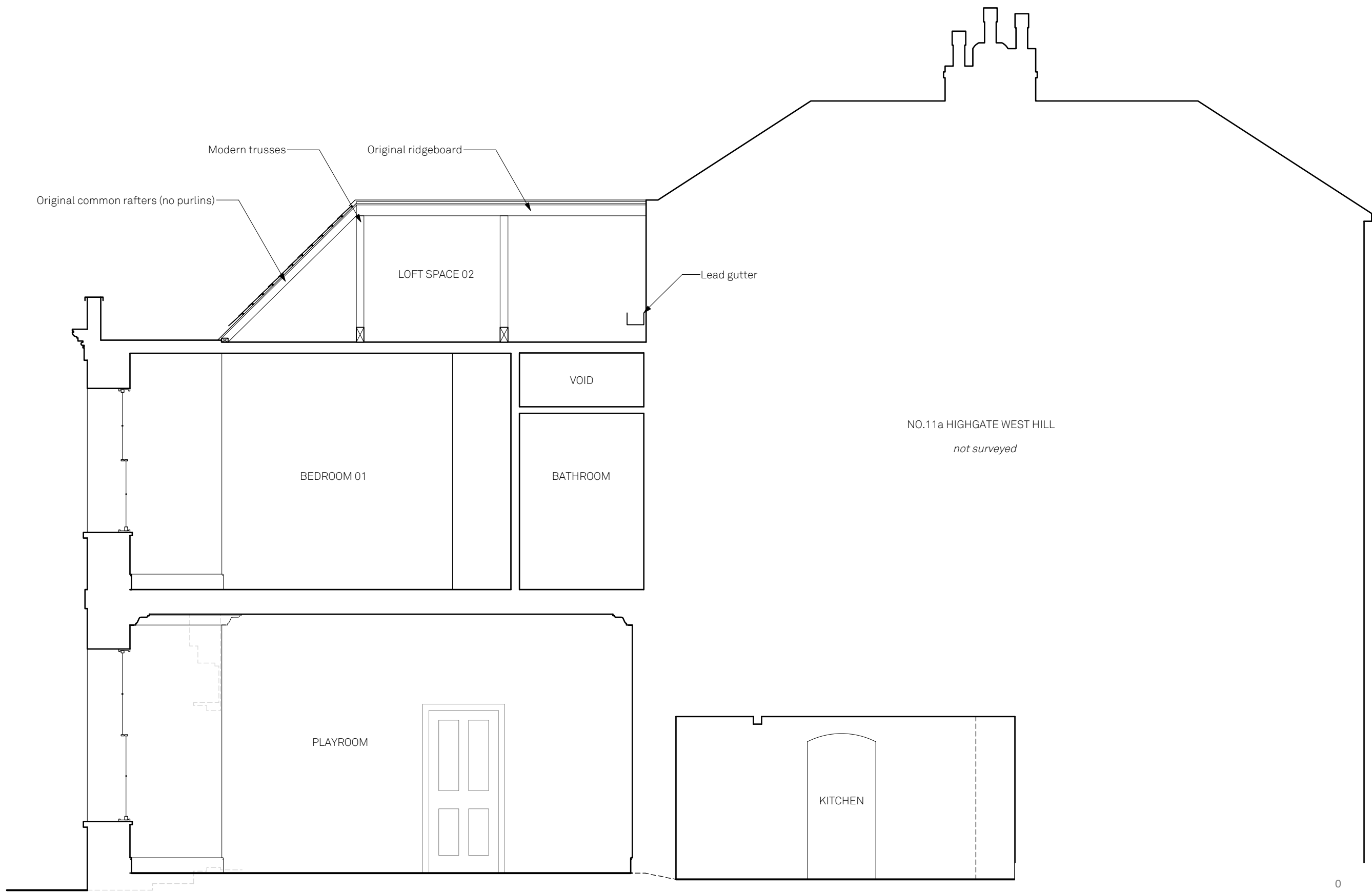
UNIONARCHITECTS

1522 . 206 Existing Section AA
 rev _ 11 Highgate West Hill, N6 6JR
 1:50 @ A3



UNIONARCHITECTS

1522 . 207 Existing Section BB
 rev _ 11 Highgate West Hill, N6 6JR
 1:50 @ A3



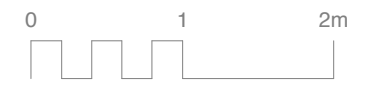
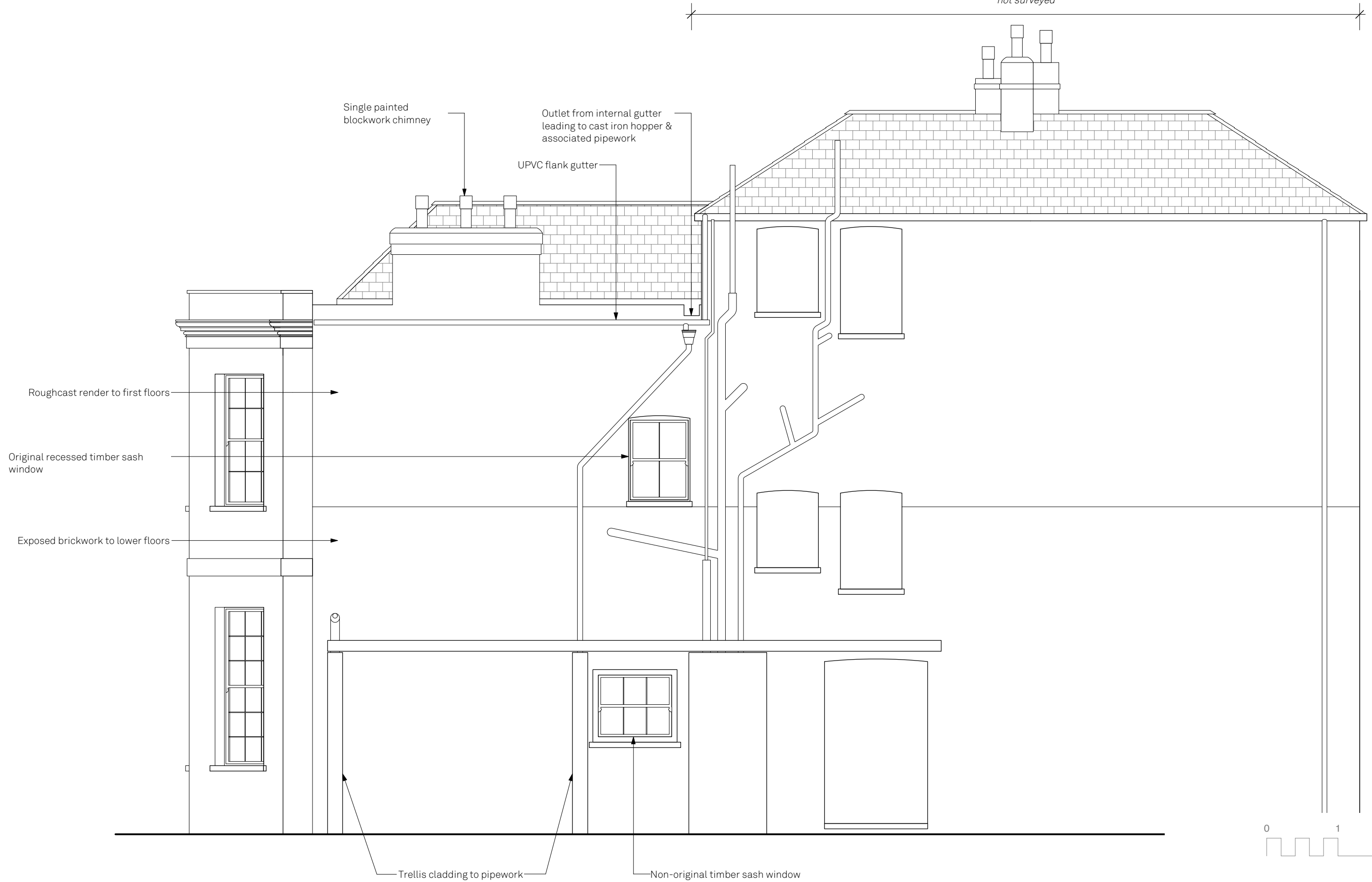
UNIONARCHITECTS

1522 . 208 Existing Section CC
 rev _ 11 Highgate West Hill, N6 6JR
 1:50 @ A3



UNIONARCHITECTS

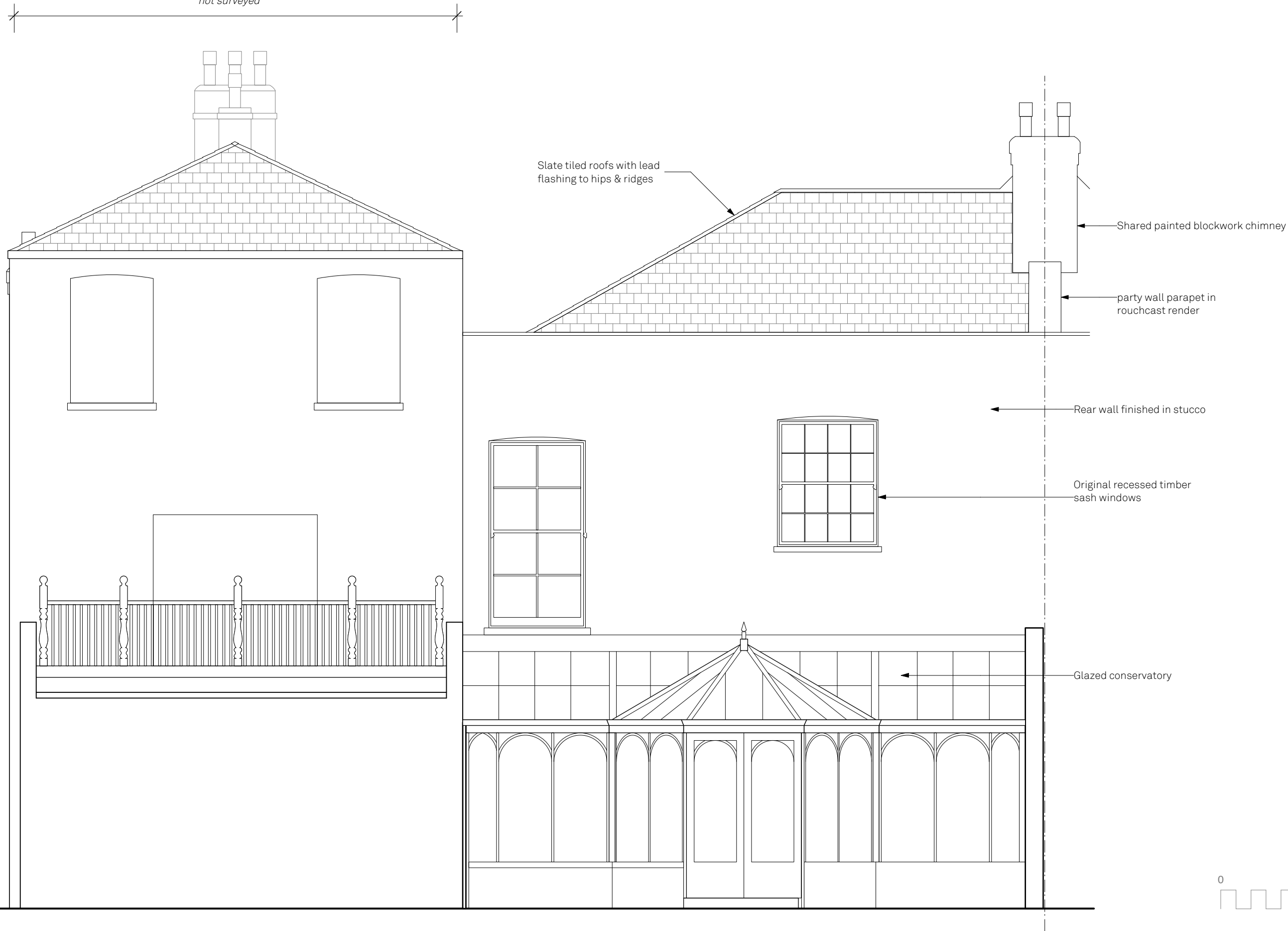
1522 . 209 Existing Elevation D
 rev _ 11 Highgate West Hill, N6 6JR
 1:50 @ A3



UNIONARCHITECTS

1522 . 210 Existing Elevation E
rev _ 11 Highgate West Hill, N6 6JR
1:50 @ A3

not surveyed



Slate tiled roofs with lead flashing to hips & ridges

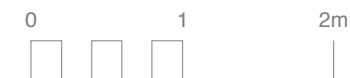
Shared painted blockwork chimney

party wall parapet in rouchcast render

Rear wall finished in stucco

Original recessed timber sash windows

Glazed conservatory



UNIONARCHITECTS