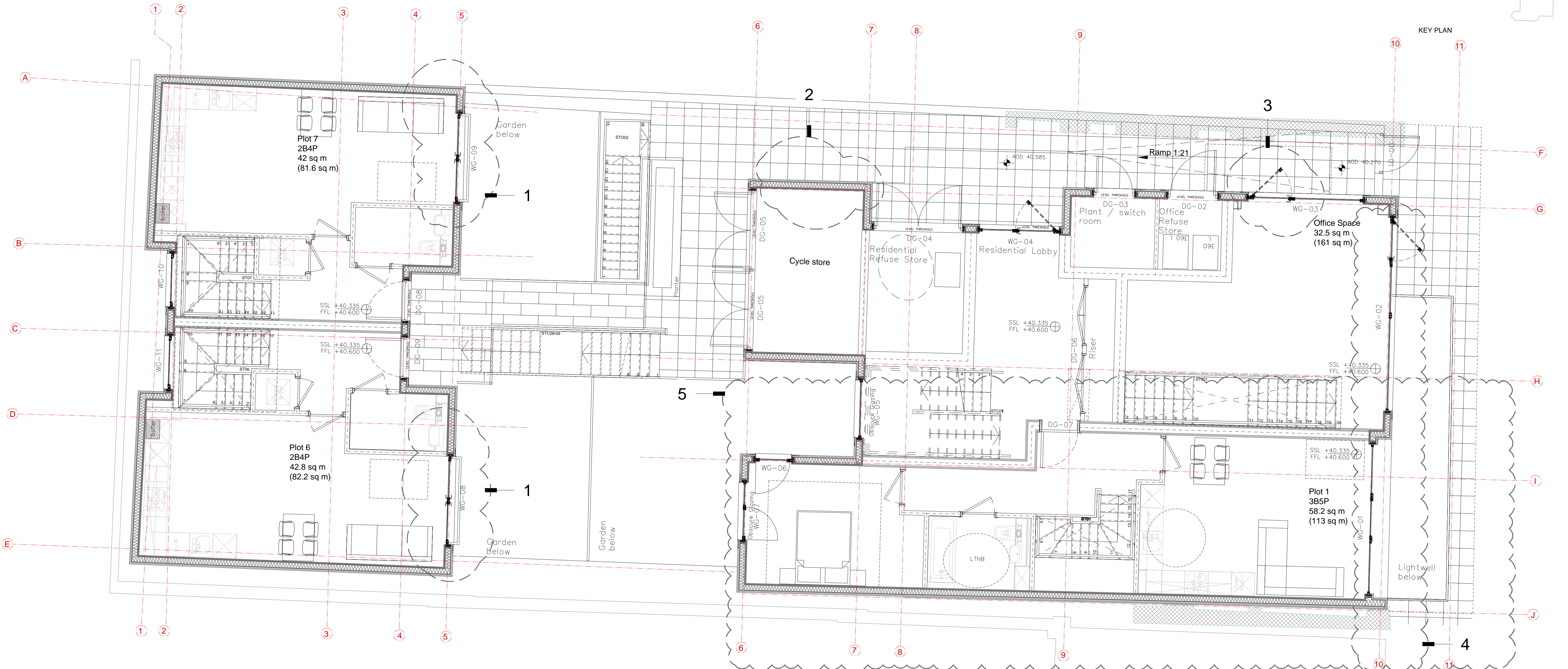


KEY PLAN



Notes :

- 1 Sliding doors replaced with openable inwards French doors. Amendment is to achieve better door u values.
- 2 Door to cycle store removed.
- 3 Door to office space added.
- 4 Glazing subdivided to match that of approved scheme.
- 5 Plot1 description 3B5P amended from 6P. Layout adjusted to comply with LTH

Revisions

MGM
CHARTERED ARCHITECTS

10 COLDBATH SQ LONDON EC1R 5HL
020 7713 8100 020 7837 0800

Project 59 - 61 Leighton Road
London
NW5 2QH

Title
GROUND FLOOR PLAN
(NMA01)

Scale 1:50@A1:1:100@A3	Drawn by VP
Date FEBRUARY 2016	Checked VP
Drawing Number 5381/P/02 NMA 01	Revision

DO NOT SCALE FROM THIS DRAWING. ALL DIMENSIONS ARE TO BE CHECKED AND VERIFIED ON SITE AND ALL DISCREPANCIES REPORTED TO MGM ASSOCIATES PRIOR TO ANY CONSTRUCTION WORK TAKING PLACE.
THIS DRAWING IS THE PROPERTY AND COPYRIGHT OF MGM ASSOCIATES AND CAN NOT BE REPRODUCED WITHOUT PERMISSION.

PLANNING