

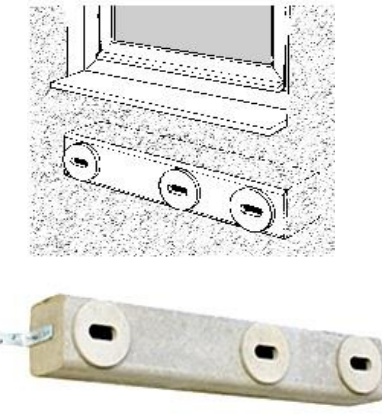
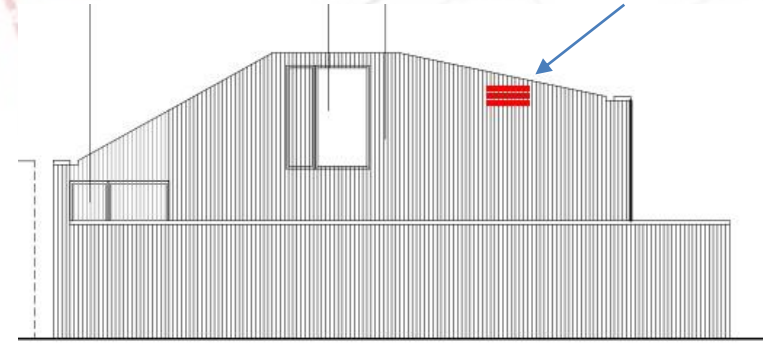
Model: Schwegler Swift Nest Box (Triple Cavity) (X3 boxes Required) Suitable for supporting a colony of swifts (*Apus apus*) or the London Action Plan house sparrow (*Passer domesticus*). The small size, shape and horizontal orientation of the entrance hole is designed to prevent other species from occupying the boxes.

Supplier: <http://www.nhbs.com/browse/search?title-type-facet%5B%5D=&term=Swift+boxes>

Location: Each box will be placed on the north-west facing wall upon the 3rd floor wall (11.4 m high), as far from the window as possible. The boxes will be sited close together, one above another, in three rows, in order to encourage a colony to form.

Fitting: The Schwegler Swift Nest Boxes at 45 Holmes Road, will be fixed behind the black timber cladding and the entrances will be left uncovered. The boxes will be painted RAL 9017 to match the cladding and window colour.

Maintenance: Swift nest boxes do not require cleaning out and thus the boxes will be maintenance free.



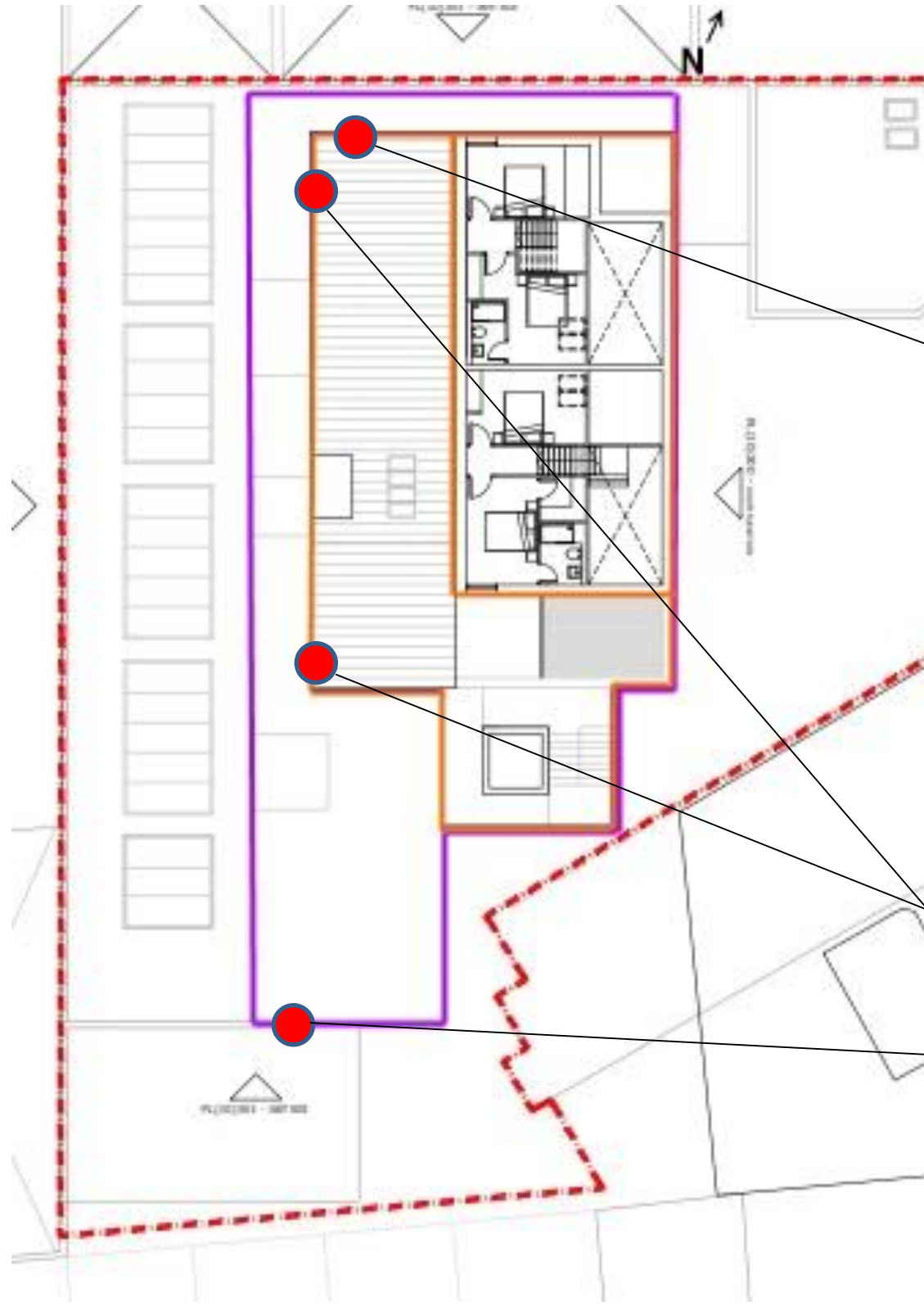
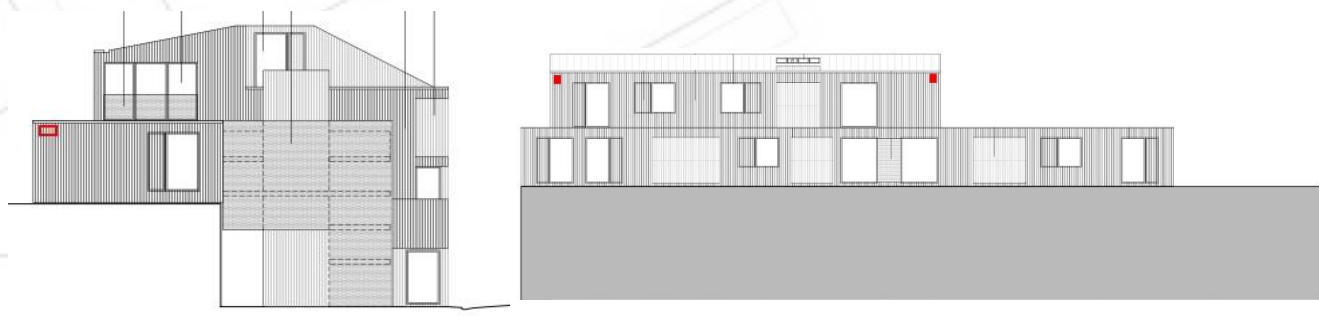
Model: Schwegler 1WI Summer & Winter Bat Box (x4 Required). Suitable for building-inhabiting London Action Plan bat species such common pipistrelle (*Pipistrellus Pipistrellus*).

Suppliers: <http://www.wildliveservices.co.uk/batboxes.html> or http://www.nhbs.com/title/177079/1wi-schwegler-summer-and-winter-bat-box?bknfo=187994&ca_id=1495&gclid=CPbrn_bt1ssCFdEy0wodzGsLIQ

Location: Two boxes will be placed on the south-east facing wall upon the 2nd floor level, beneath the roof top. Two more boxes will be installed on the rear of the building (south west facing), beneath the roof top. The installation height will be at least 7.8 m from ground level. Boxes will not be installed next to windows.

Fitting: The 1WI Bat Boxes at 45 Holmes Road, will be fixed behind the black timber cladding and the entrances will be left uncovered. The boxes will be painted RAL 9017 to match the cladding and window colour.

Maintenance: Self-cleaning and thus completely maintenance-free.



Ecological Enhancements Plan for Birds and Bats

45 Holmes Road, London

E845-01

Revision 1
Date: May 2016

Originator:
Beth Holmes

Technical Checked by:
Paula Richings

Quality checked by:
Helen Satchell

enims Ltd
Office 4,
Burcot Farm,
East Stratton,
Winchester,
SO21 3DZ

Tel: 01962 795159

