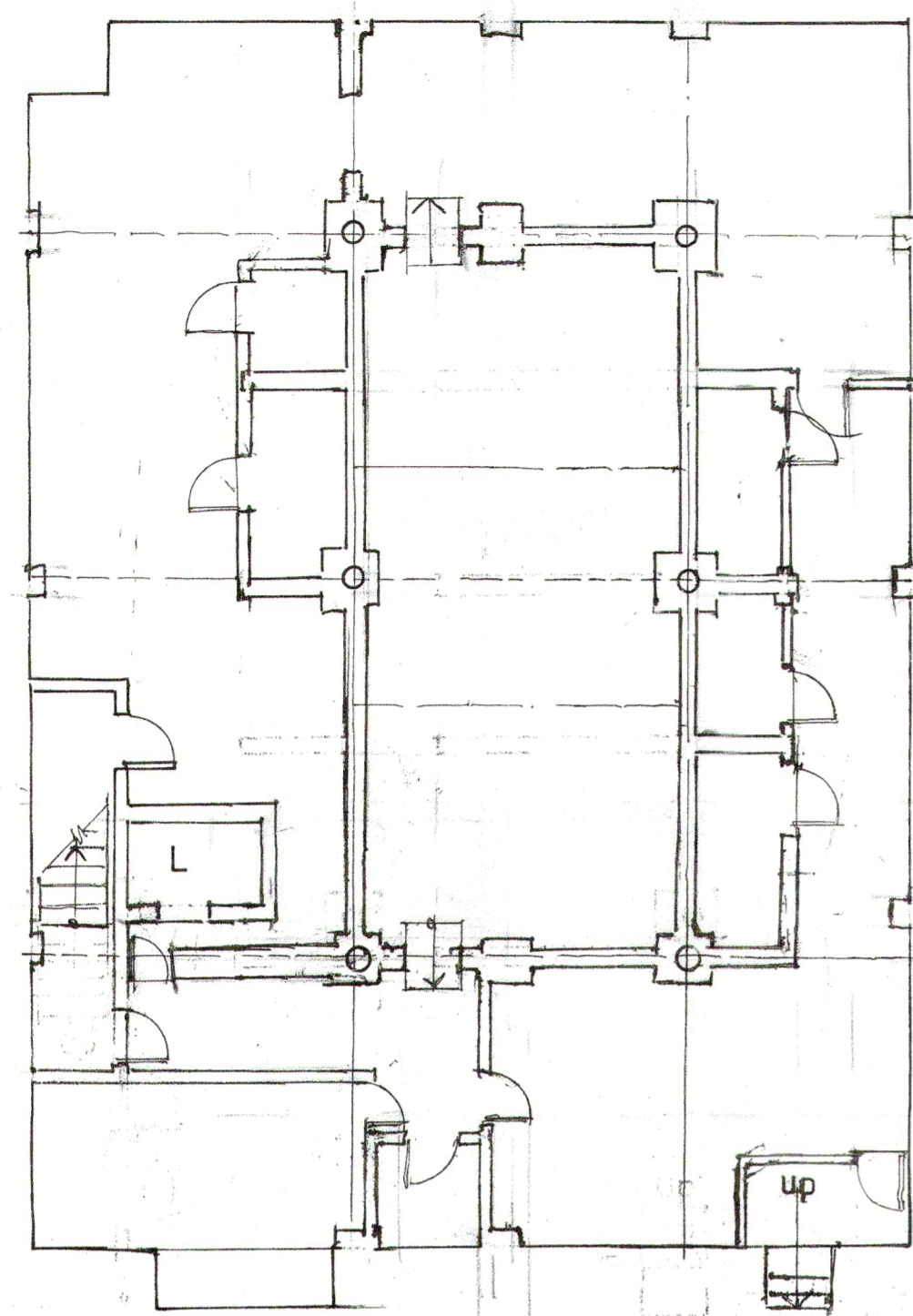
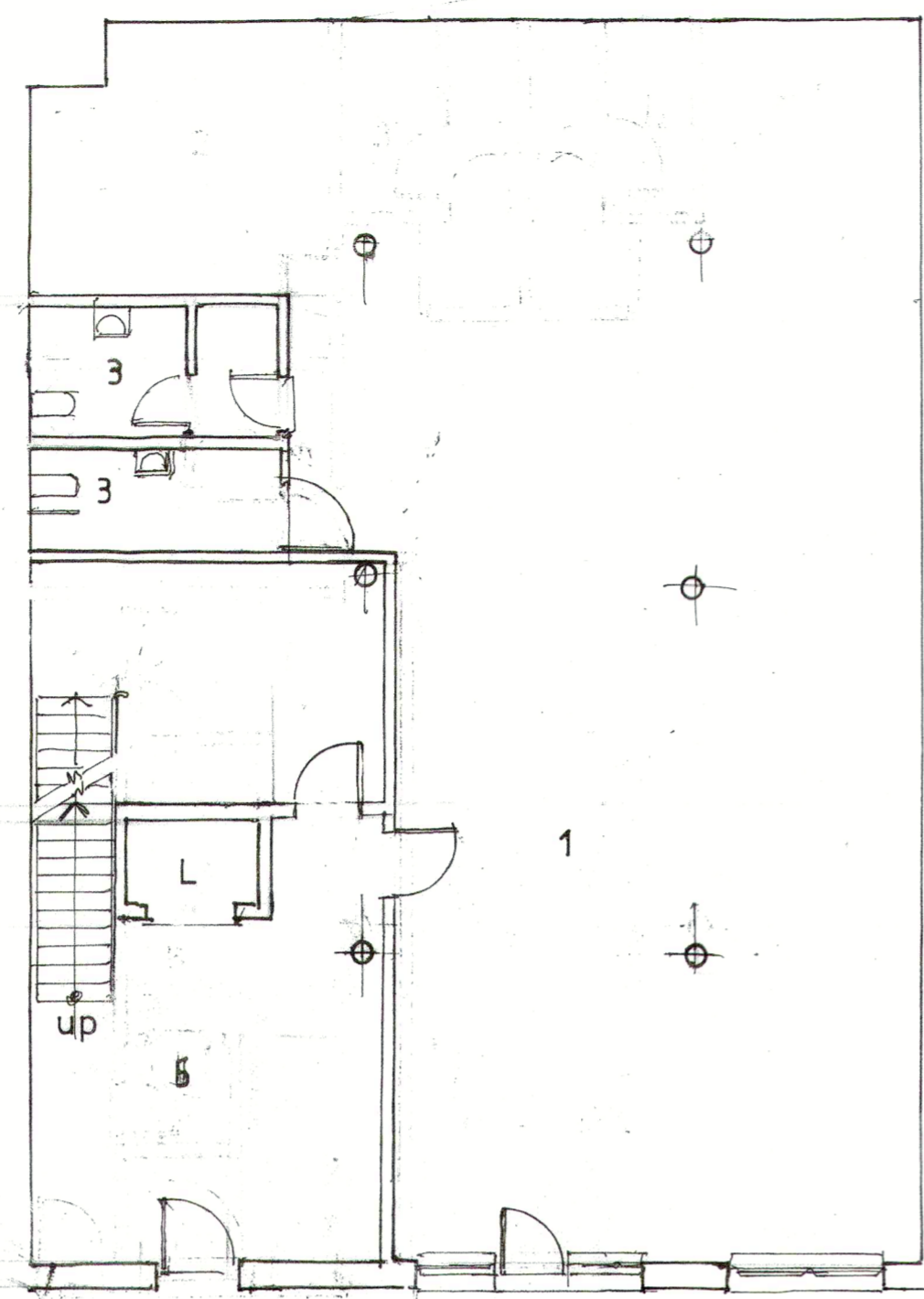


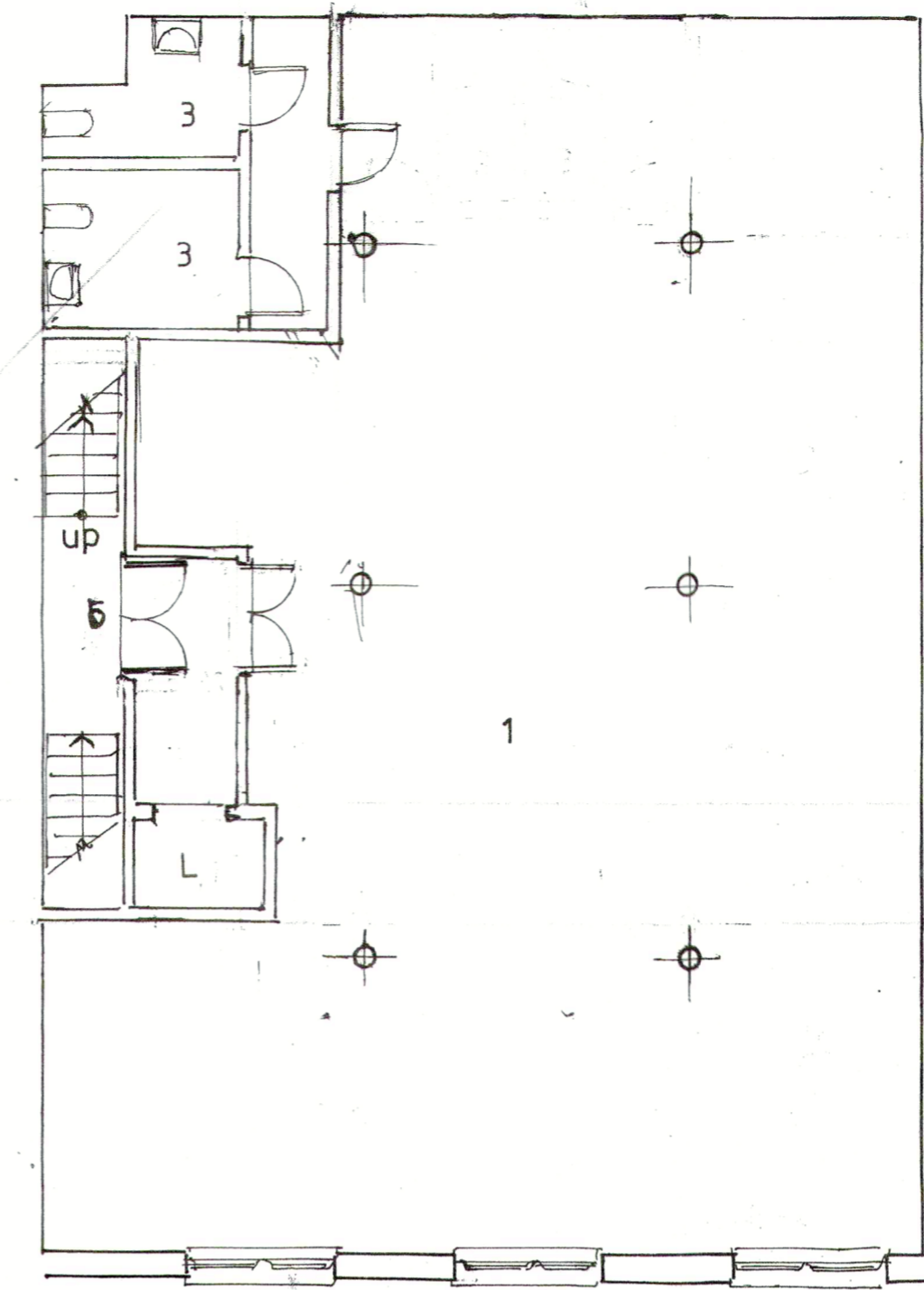
EXISTING



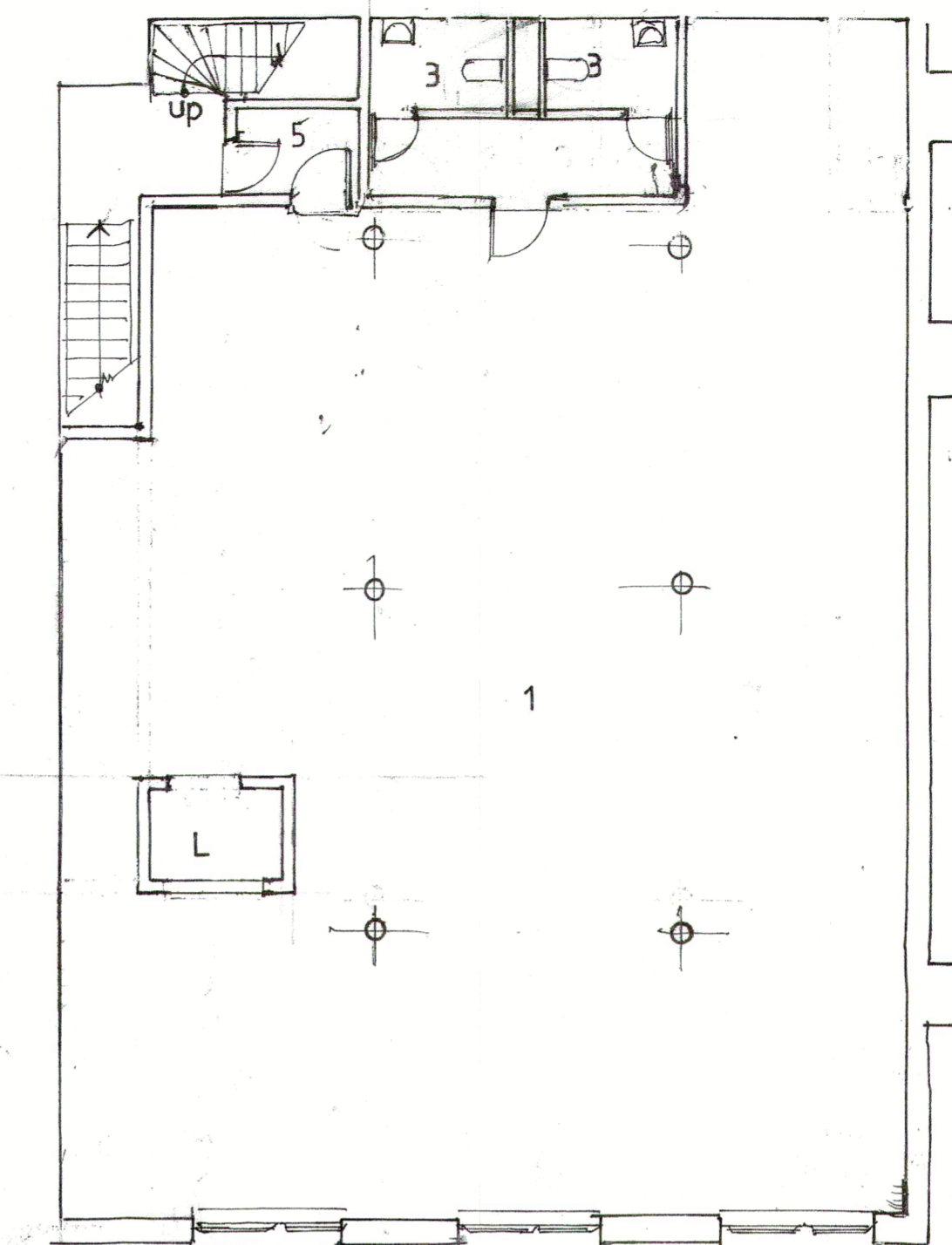
BASEMENT PLAN



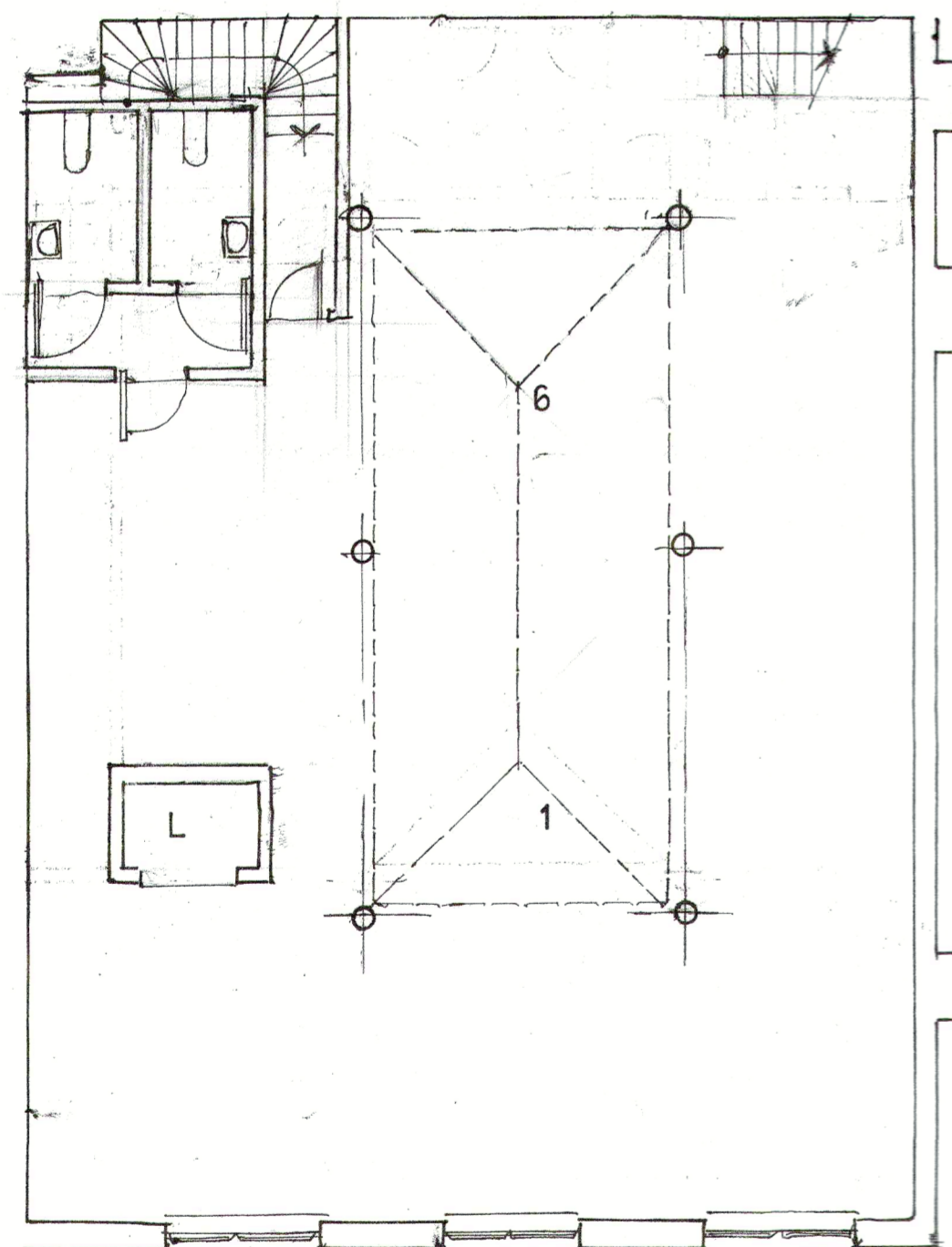
GROUND FLOOR PLAN



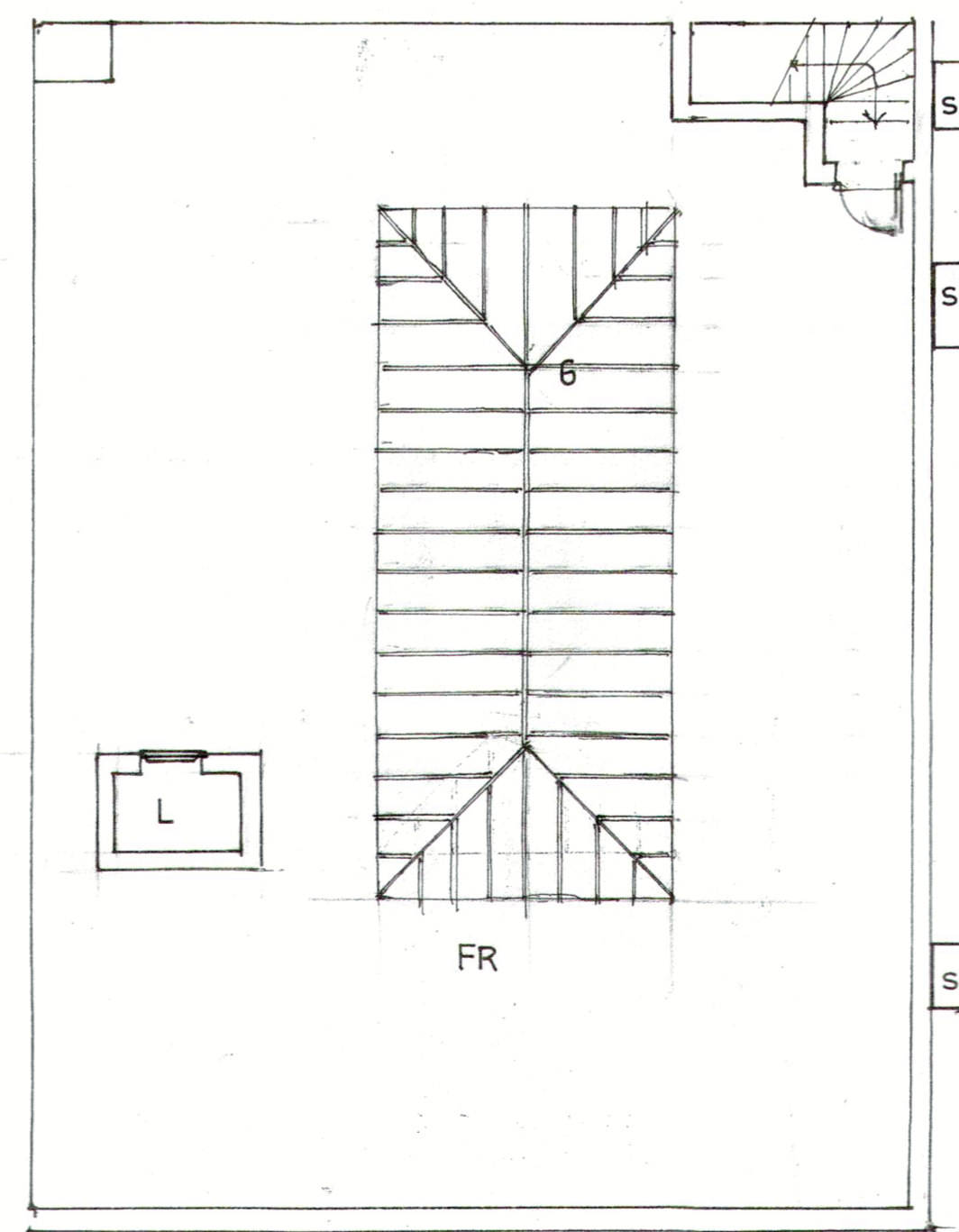
FIRST FLOOR PLAN



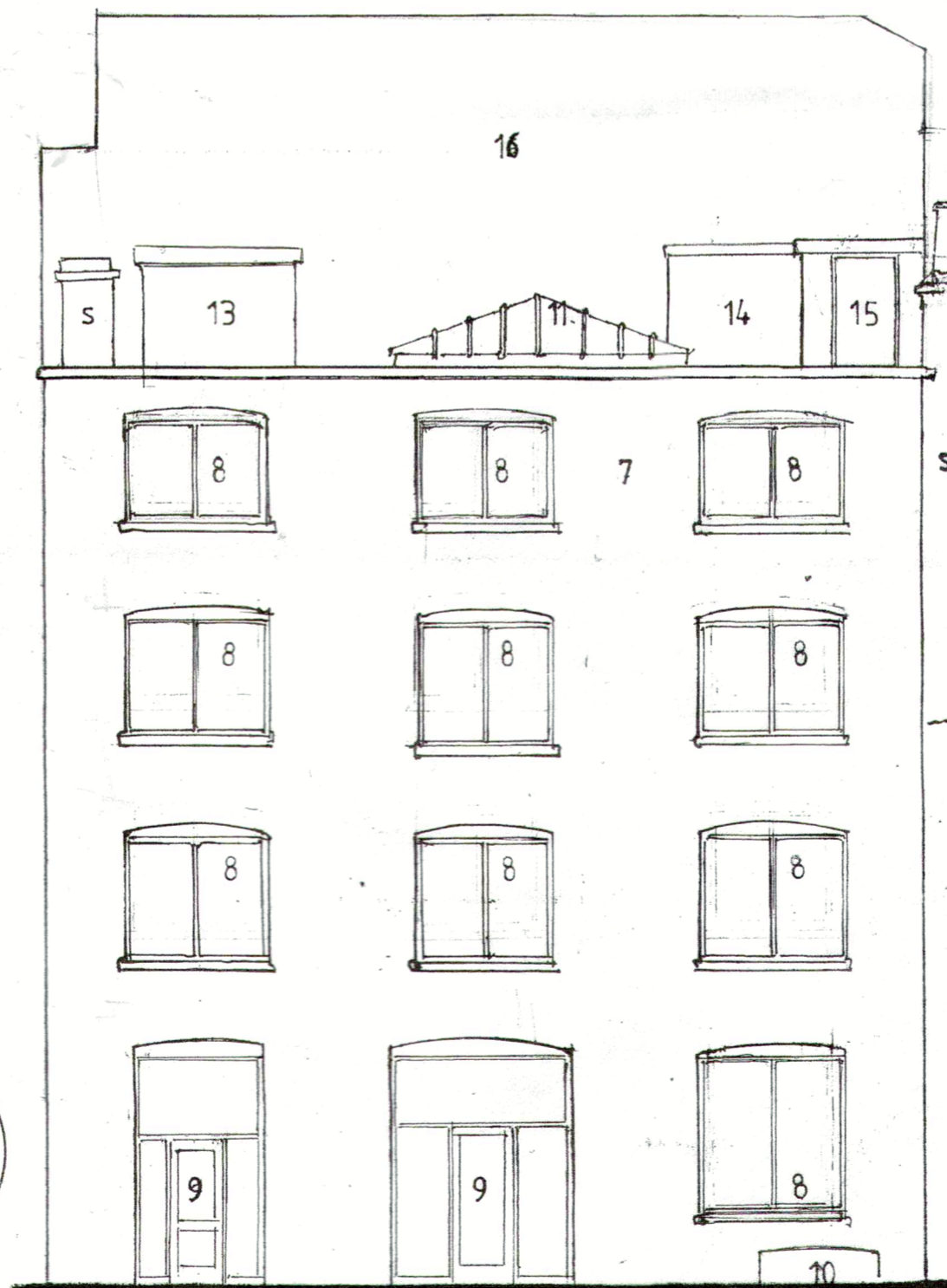
SECOND FLOOR PLAN



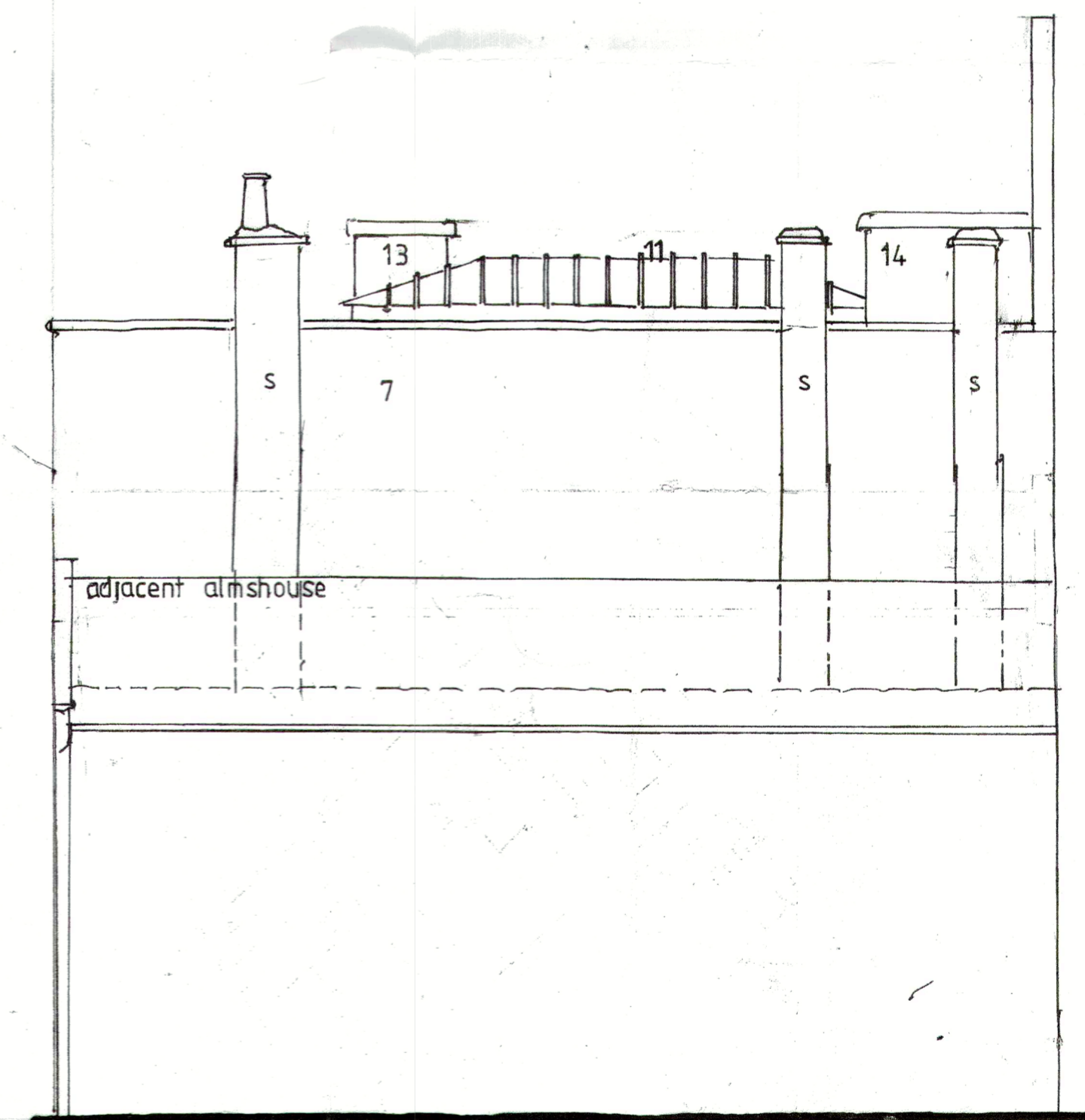
THIRD FLOOR PLAN



ROOF PLAN



EXISTING SOUTHWEST FACING ELEVATION



EXISTING SOUTH EAST FACING ELEVATION

1.office, 2.kitchenette, 3.lavatory, 4.store rooms, 5.lobby, 6.rooflight, L.lift, S.chimney stack. FR.flat roof, 7.London stock bricks, 8.aluminium frame windows, 9.alum. glazed screen & door, 10.exit trap, 11.alum.glazing lantern, 12.precast concrete parapet coping, 13.surface rendered lift motor room with asphalt roof, 14.surface rendered roof access with asphalt roof, 15.hammer access door, 16.brick backwall.

C 25 APRIL 2010 DOORS ACCESS AROUND LEFT ADDED

REVISIONS  
A EXISTING SOUTHWEST ELEVATION WINDOWS ADJUSTED & HEIGHT OF ADJACENT ALUMINUM ROOFES ADJUSTED ON SOUTH EAST ELEVATION  
B RESTORING GROUND FLOOR DOOR WITH 1000MM MINIMUM CLEARANCE AS EXISTING

PETER SALTER hons.FRIBA-01584 872 032  
psalter1@btinternet.com

8 SMARTS PLACE LONDON W.C.2.  
existing office plans

scale 1:100 1:1250

client BAYLIGHT PROPERTIES PLC

rev.

C

PA4