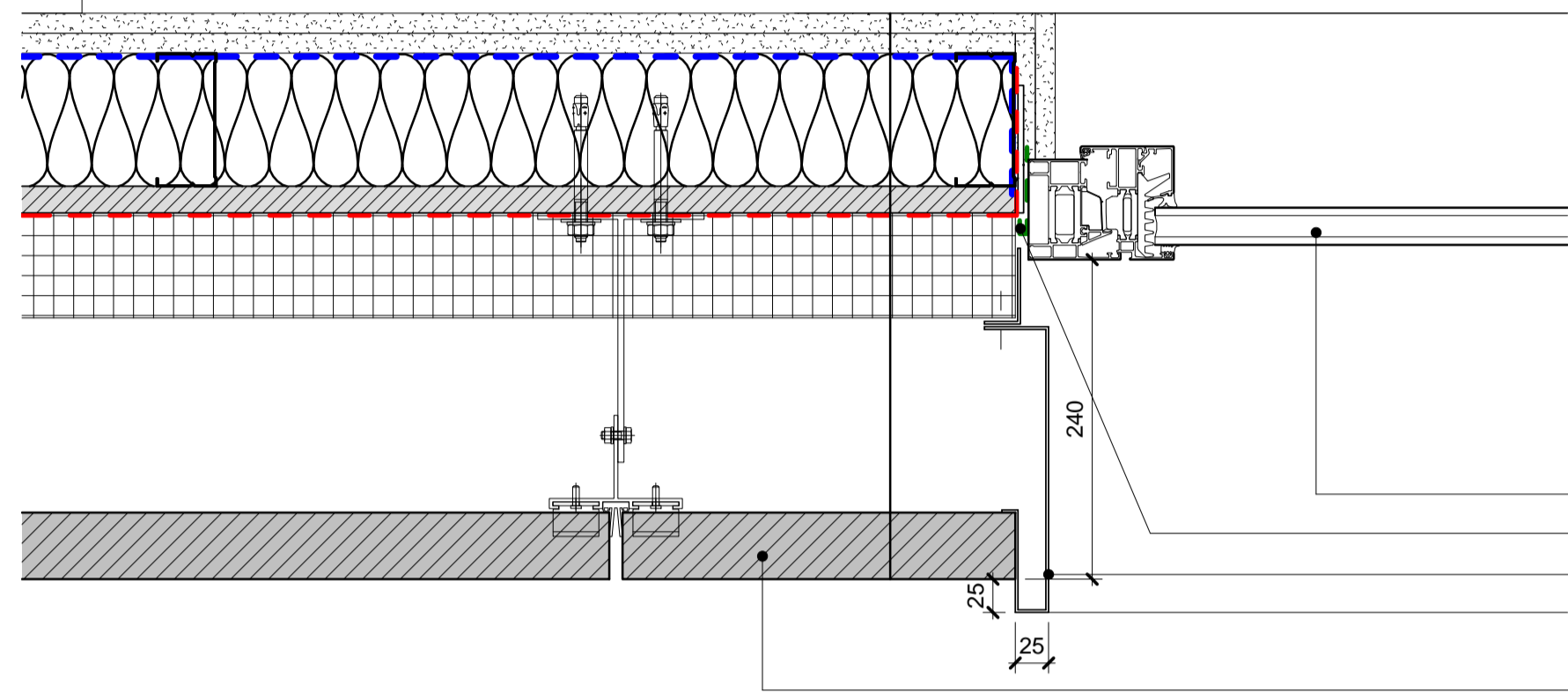


W.J



Window system as L10/332
 All window junctions to allow full EPDM seals
 Hidden fixed aluminum extruded window pressing as H31/111
 - finish to match windows

TYPICAL EXTERNAL WALL BUILDUP
 - 2No. acoustic plasterboard
 - Vapour barrier as P10/311
 - Lightweight steel frame as G10/151
 - In-fill mineral wool as P10/191A
 - Cement Board as H20/151
 - Breather membrane as P10/320
 - Partial fill cavity insulation as F30/156
 - Rainscreen support framing as H92/121
 - Terracotta rainscreen facing as H92/121

01 PLAN - TYPICAL TERRACOTTA WINDOW JAMB DETAIL

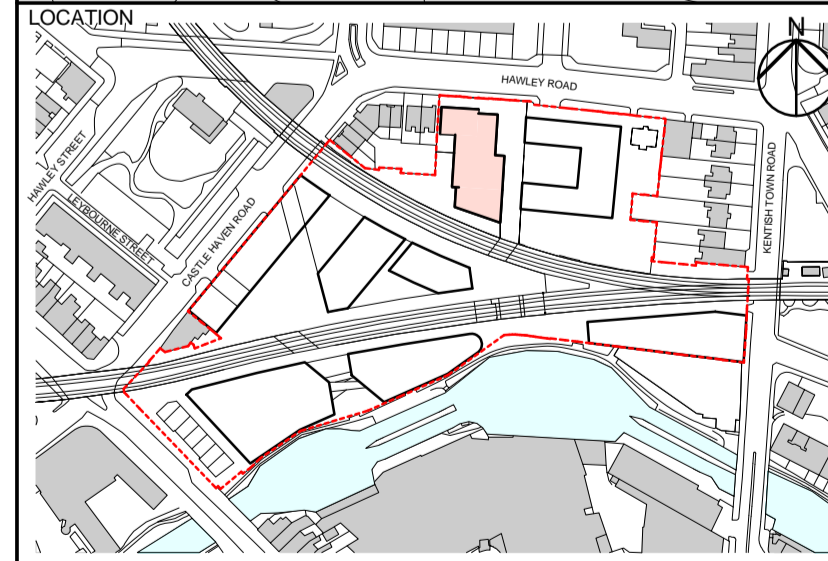
KEY

T01 26/06/15 STAGE E TENDER ISSUE

REV DATE DESCRIPTION

| CONSULTANTS | |
|-----------------------|---------------------|
| CLIENT: | Stanley Sidings |
| CONTRACTOR: | - |
| STRUCTURAL ENGINEER: | Walsh Group |
| MECHANICAL ENGINEER: | Hoare Lea |
| COST CONSULTANT: | Gardiner & Theobald |
| PROJECT MANAGER: | Gardiner & Theobald |
| ACOUSTIC CONSULTANT: | Arup |
| TRANSPORT CONSULTANT: | Arup |
| PLANNING CONSULTANT: | Gerald Eve |
| LANDSCAPE ARCHITECT: | Fabrik |
| CDM CO-ORDINATOR: | MSA Safety |

- NOTE
- Do not scale from this drawing.
 - All dimensions to be checked on site by the contractor and such dimensions to be his responsibility. Report all drawing errors, omissions and discrepancies to the architect.
 - This document may be issued in an uncontrolled CAD format to enable others to use it as background information to make alterations and/or additions. In that instance the file will be accompanied by a PDF version. It is for those making such alterations and additions to ensure that they make use of current background information.
 - AHMM Ltd accepts no liability for any such alterations or additions to the background information or arising out of changes to background information which occur prior to alterations or additions being made.



ALL FORD HALL MONAGHAN MORRIS
 ARCHITECTS Ltd
 5-23 OLD STREET, LONDON, EC1V 9HL
 TEL 020 7251 5261 FAX 020 7251 5123 WEB WWW.AHMM.CO.UK

job title
CAMDEN LOCK VILLAGE
 drawing title / location
BLOCK W - TYPICAL TERRACOTTA WINDOW DETAILS 02

| | | | |
|----------|---------|------------|--------|
| drawn by | checked | scale | status |
| KP | KH | 1 : 5 @ A1 | TENDER |

| | | |
|---------|---------------|----------|
| project | drawing no. | revision |
| 14045 | WX_(21)_ 6004 | T01 |