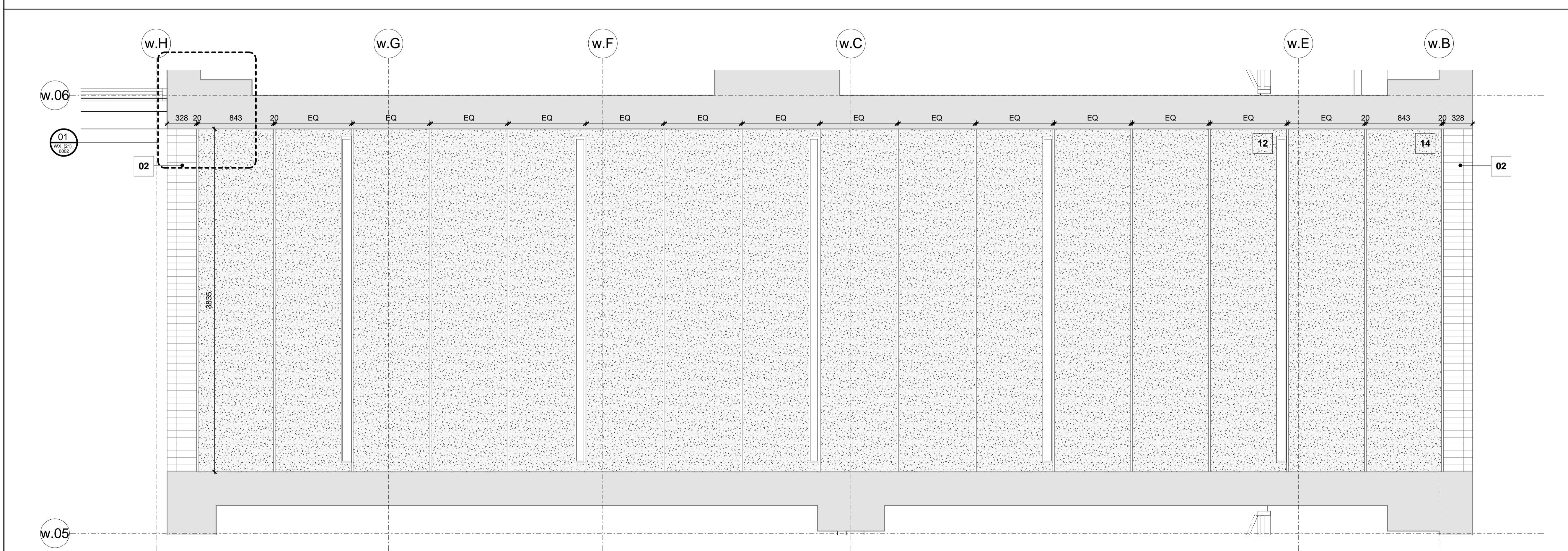


01 Section 39



02 FIRST FLOOR PLAN - Callout 1

- KEY
- Legend
- 01 PPC coated aluminium coping as F30/780A
 - 02 Feature brick soldier course and return brick soffit as F10/111
 - 03 Facing brickwork as F10/111
 - 04 Window system as L10/332
 - 05 Glass balustrade as L30/553
 - 06 Hidden fixed external render soffit board as H20/150A with ventilation barrier: to prevent ventilation supply + extract short circuiting
 - 07 Timber decking to balconies as Q55/111
 - 08 Hidden fixed PPC aluminium extruded window pressing as H31/112 with perforations for ventilation
 - 09 Lapped shingle terracotta rainscreen system as H82/121
 - 10 Precast concrete facing as F31/113
 - 11 Intercom to M+E and specialist contractors requirements
 - 12 External lighting: recessed into soffit - to M+E requirements
 - 13 External balcony lighting: wall mounted - to M+E requirements
 - 14 Secret fixed GRC soffit board on hanging system as H40/132
 - 15 External sliding folding window system as L10/311 - with trickle vent, M+E sub-contractor to confirm air make-up requirements

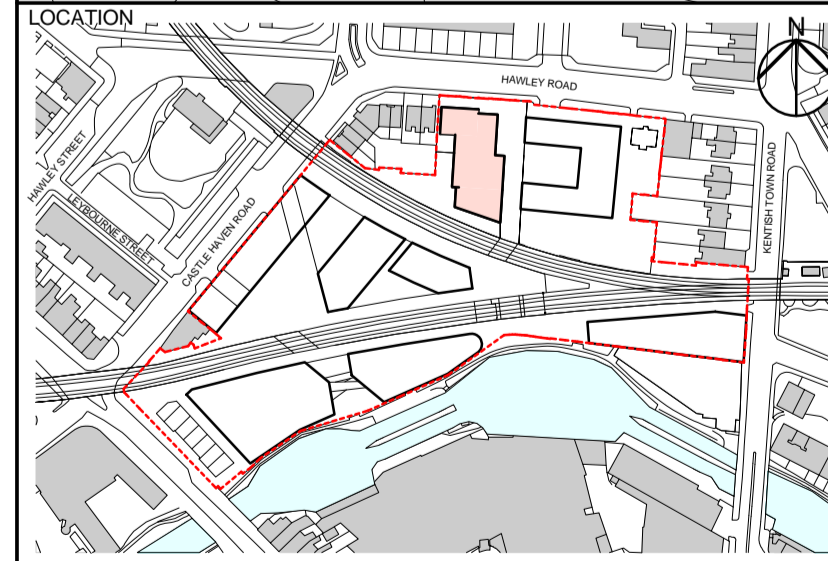
T01 26/06/15 STAGE E TENDER ISSUE

REV	DATE	DESCRIPTION

CONSULTANTS

CLIENT:	Stanley Sidings
CONTRACTOR:	-
STRUCTURAL ENGINEER:	Walsh Group
MECHANICAL ENGINEER:	Hoare Lea
COST CONSULTANT:	Gardiner & Theobald
PROJECT MANAGER:	Gardiner & Theobald
ACOUSTIC CONSULTANT:	Arup
TRANSPORT CONSULTANT:	Arup
PLANNING CONSULTANT:	Gerald Eve
LANDSCAPE ARCHITECT:	Fabrik
CDM CO-ORDINATOR:	MSA Safety

- NOTE
1. Do not scale from this drawing.
 2. All dimensions to be checked on site by the contractor and such dimensions to be his responsibility. Report all drawing errors, omissions and discrepancies to the architect.
 3. This document may be issued in an uncontrolled CAD format to enable others to use it as background information to make alterations and/or additions. In that instance the file will be accompanied by a PDF version. It is for those making such alterations and additions to ensure that they make use of current background information.
 4. AHMM Ltd accepts no liability for any such alterations or additions to the background information or arising out of changes to background information which occur prior to alterations or additions being made.



ALFORD HALL MONAGHAN MORRIS
 ARCHITECTS Ltd
 5-23 OLD STREET, LONDON, EC1V 9HL
 TEL 020 7251 5261 FAX 020 7251 5123 WEB WWW.AHMM.CO.UK

job title
CAMDEN LOCK VILLAGE
 drawing title / location
BUILDING W - CUT THROUGH

drawn by	checked	scale	status
KP	KH	1 : 25 @ A1	TENDER

project	drawing no.	revision
14045	WX_(21)_4004	T01