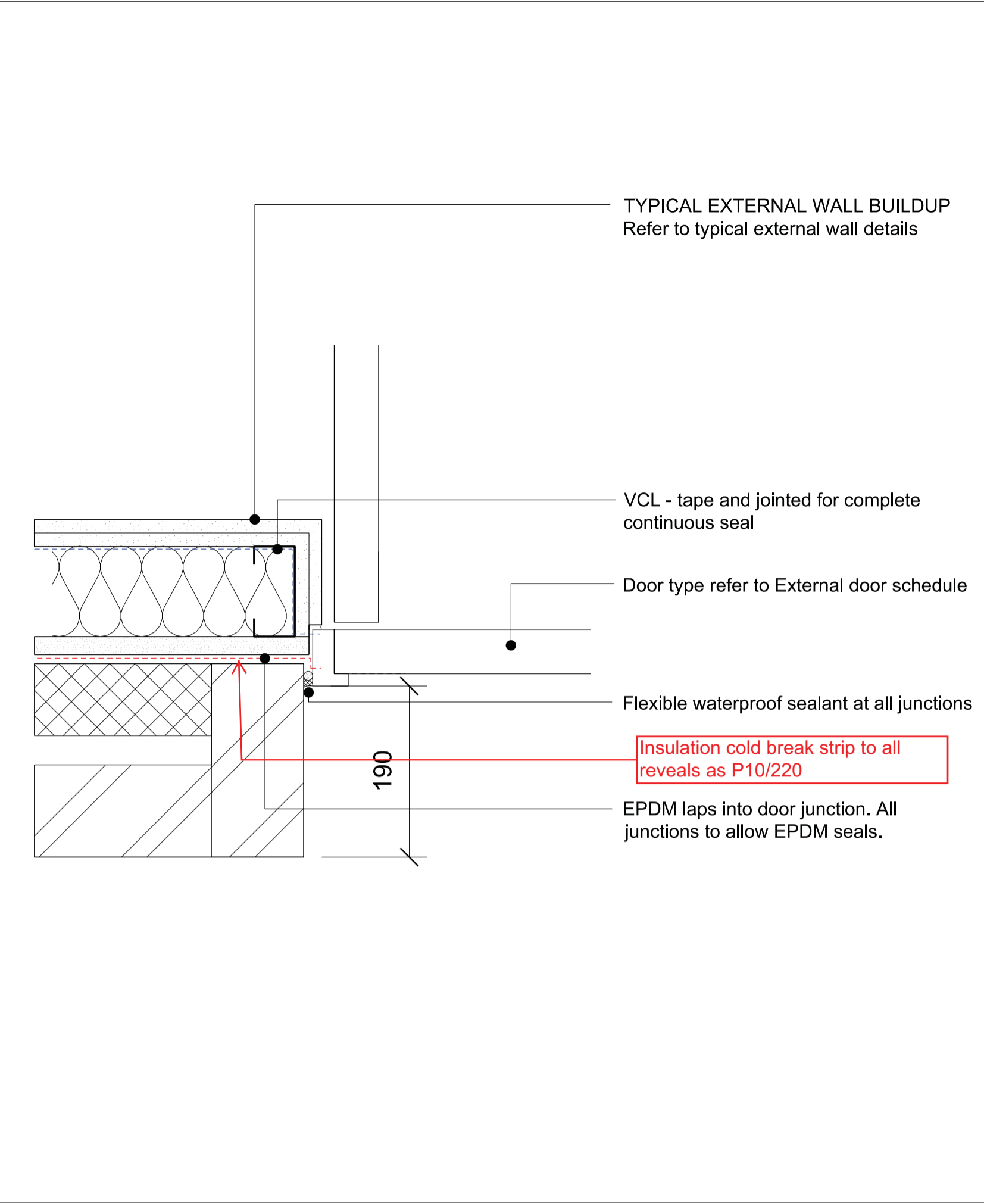
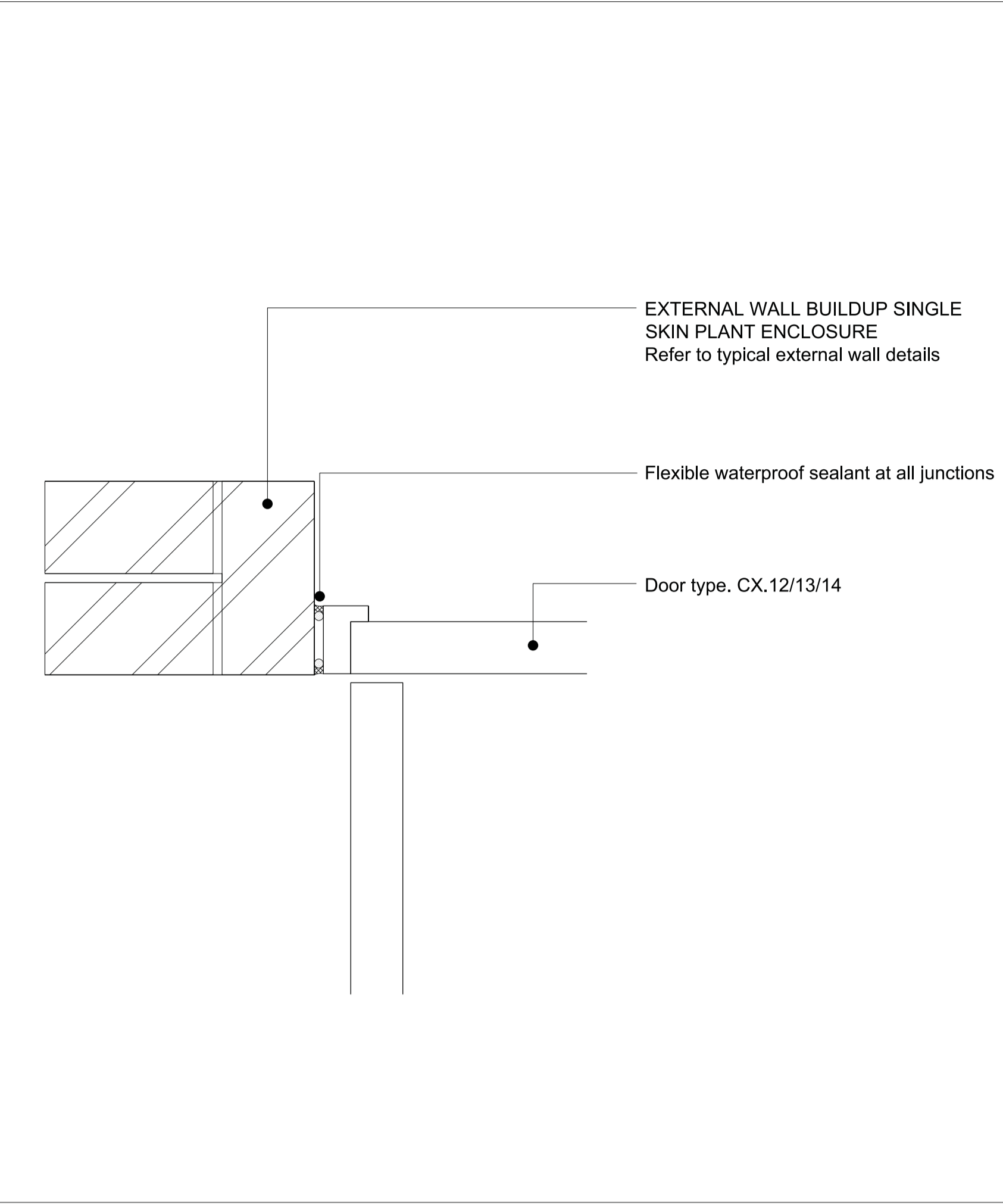


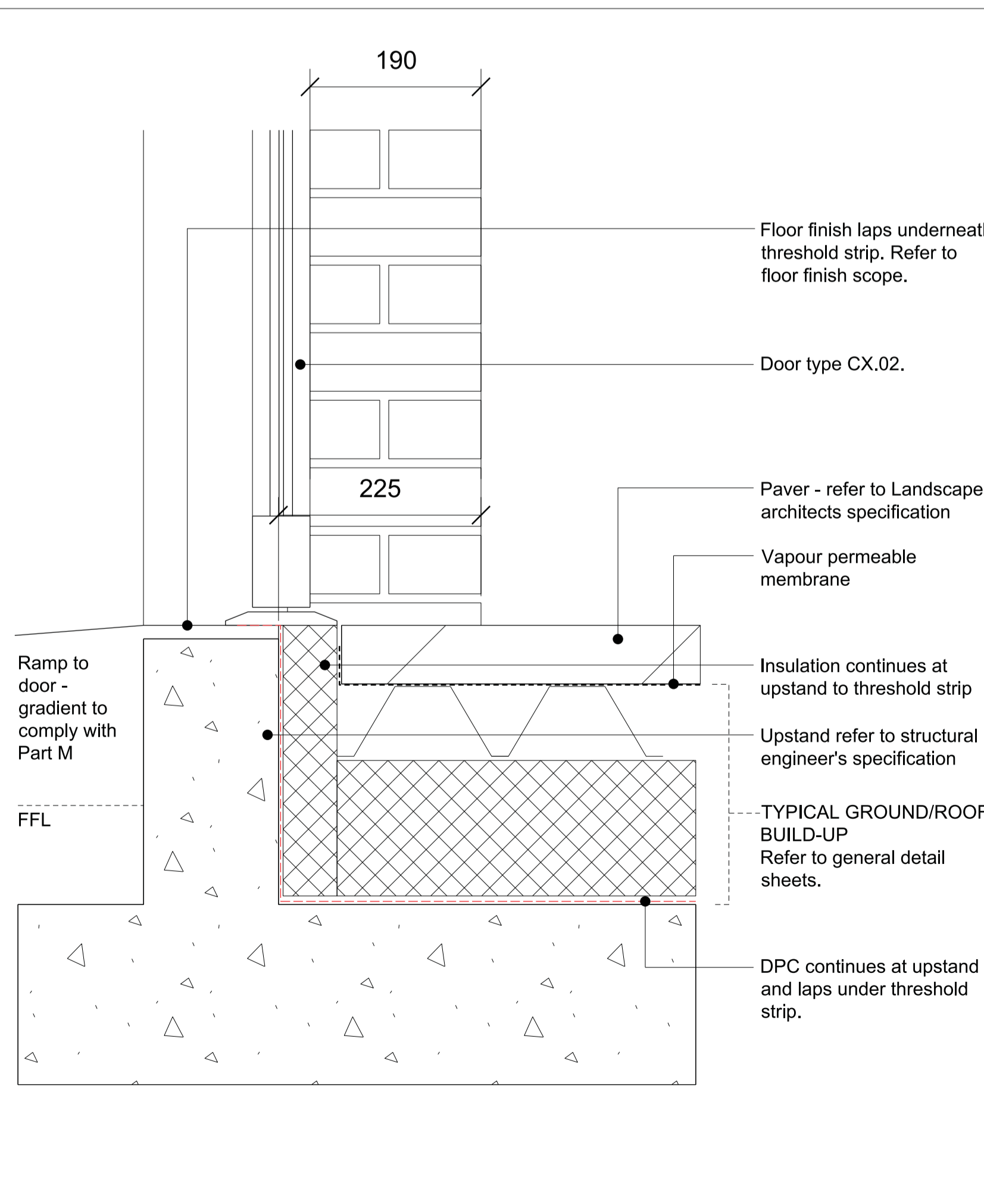
01 Head detail - Typical external wall



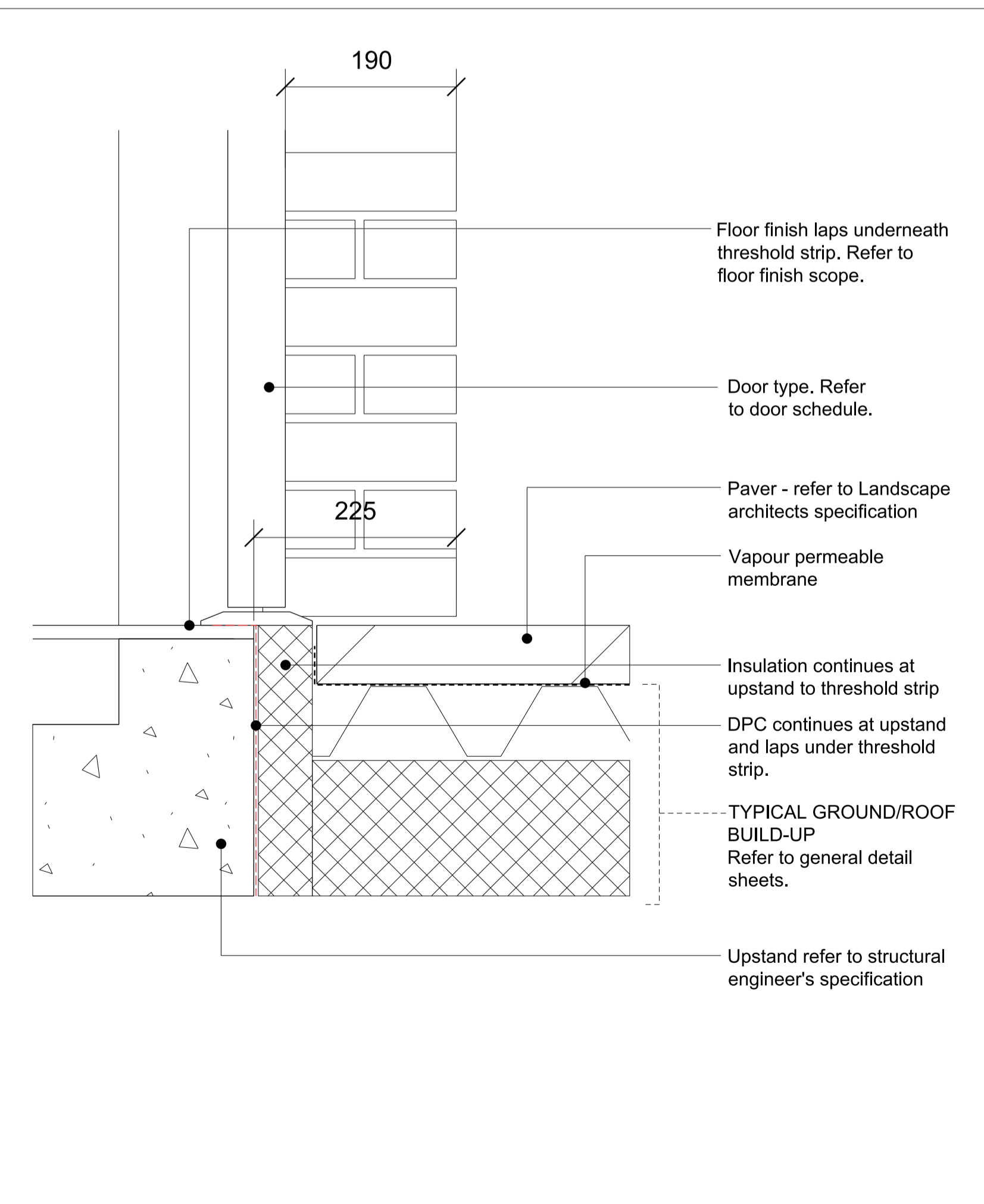
02 Jamb detail - Typical external wall



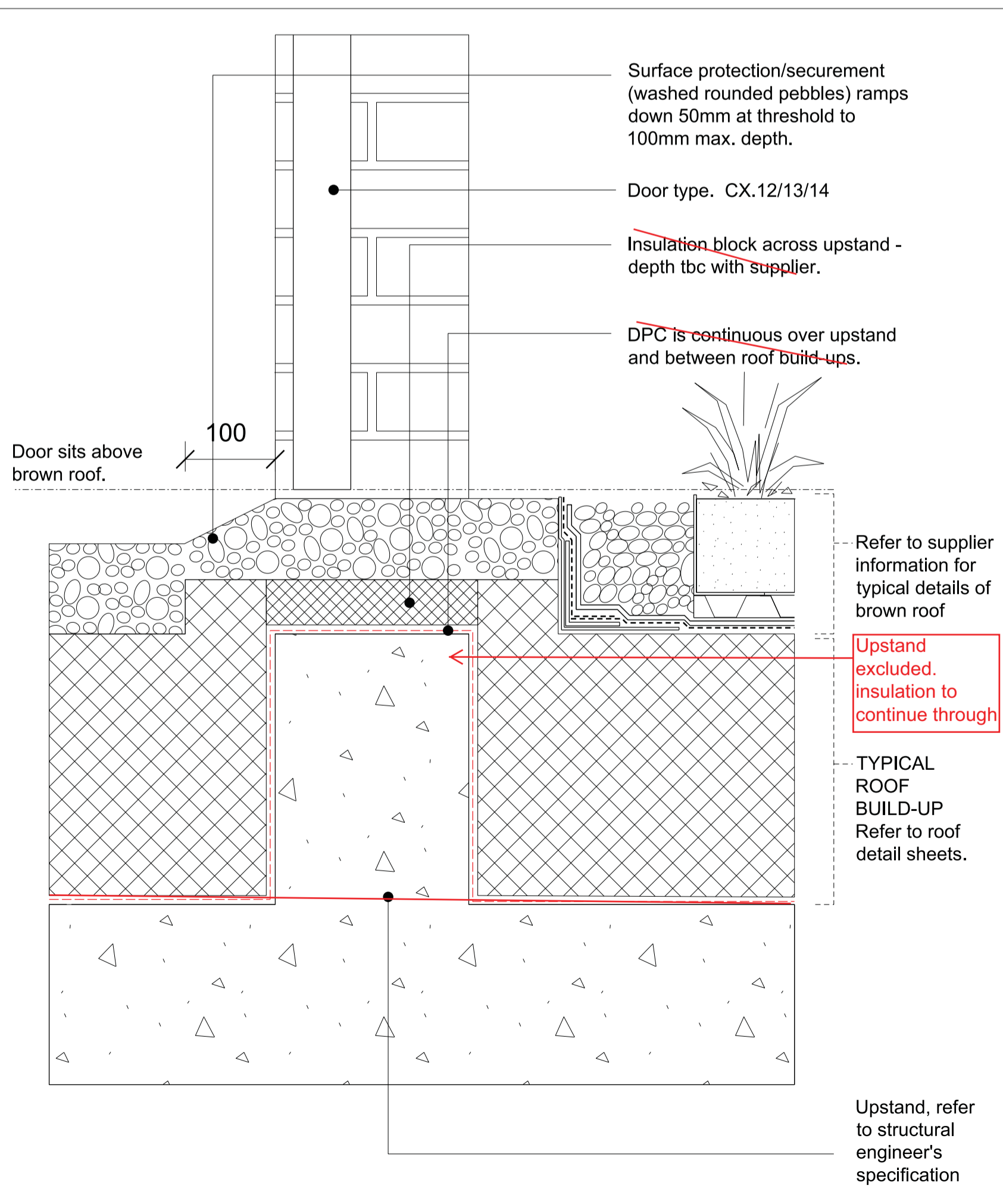
03 Jamb detail - Typical external plant enclosure



04 Base detail - Internal ramp



05 Base detail - Typical level threshold



06 Base detail - Stepped access plant enclosure

KEY

GENERAL NOTES

Refer to (68) series drawings for all fire ratings.

T02 18/12/15 ISSUED FOR ER's

T01 26/06/15 STAGE E FOR TENDER

REV	DATE	DESCRIPTION

CONSULTANTS

CLIENT:	Stanley Sidings
CONTRACTOR:	-
STRUCTURAL ENGINEER:	Walsh Group
MECHANICAL ENGINEER:	Hoare Lea
COST CONSULTANT:	Gardiner & Theobald
PROJECT MANAGER:	Gardiner & Theobald
ACOUSTIC CONSULTANT:	Hoare Lea
TRANSPORT CONSULTANT:	Arup
PLANNING CONSULTANT:	Gerald Eve
LANDSCAPE ARCHITECT:	Fabrik
CDM CO-ORDINATOR:	MSA Safety

- NOTE
- Do not scale from this drawing.
 - All dimensions to be checked on site by the contractor and such dimensions to be his responsibility. Report all drawing errors, omissions and discrepancies to the architect.
 - This document may be issued in an uncontrolled CAD format to enable others to use it as background information to make alterations and/or additions. In that instance the file will be accompanied by a PDF version. It is for those making such alterations and additions to ensure that they make use of current background information.
 - AHMM Ltd accepts no liability for any such alterations or additions to the background information or arising out of changes to background information which occur prior to alterations or additions being made.



ALLFORD HALL MONAGHAN MORRIS
ARCHITECTS Ltd
5-23 OLD STREET, LONDON, EC1V 9HL
TEL 020 7251 5261 FAX 020 7251 5123 WEB WWW.AHMM.CO.UK

job title
Camden Lock Village
drawing title / location
Block C - Typical external door details

drawn by	checked	scale	status
JR	KH	1:5 @ A1 ; 1:10 @ A3	ER ISSUE
project	drawing no.		revision
14045	CX_(21)_6050		T02