

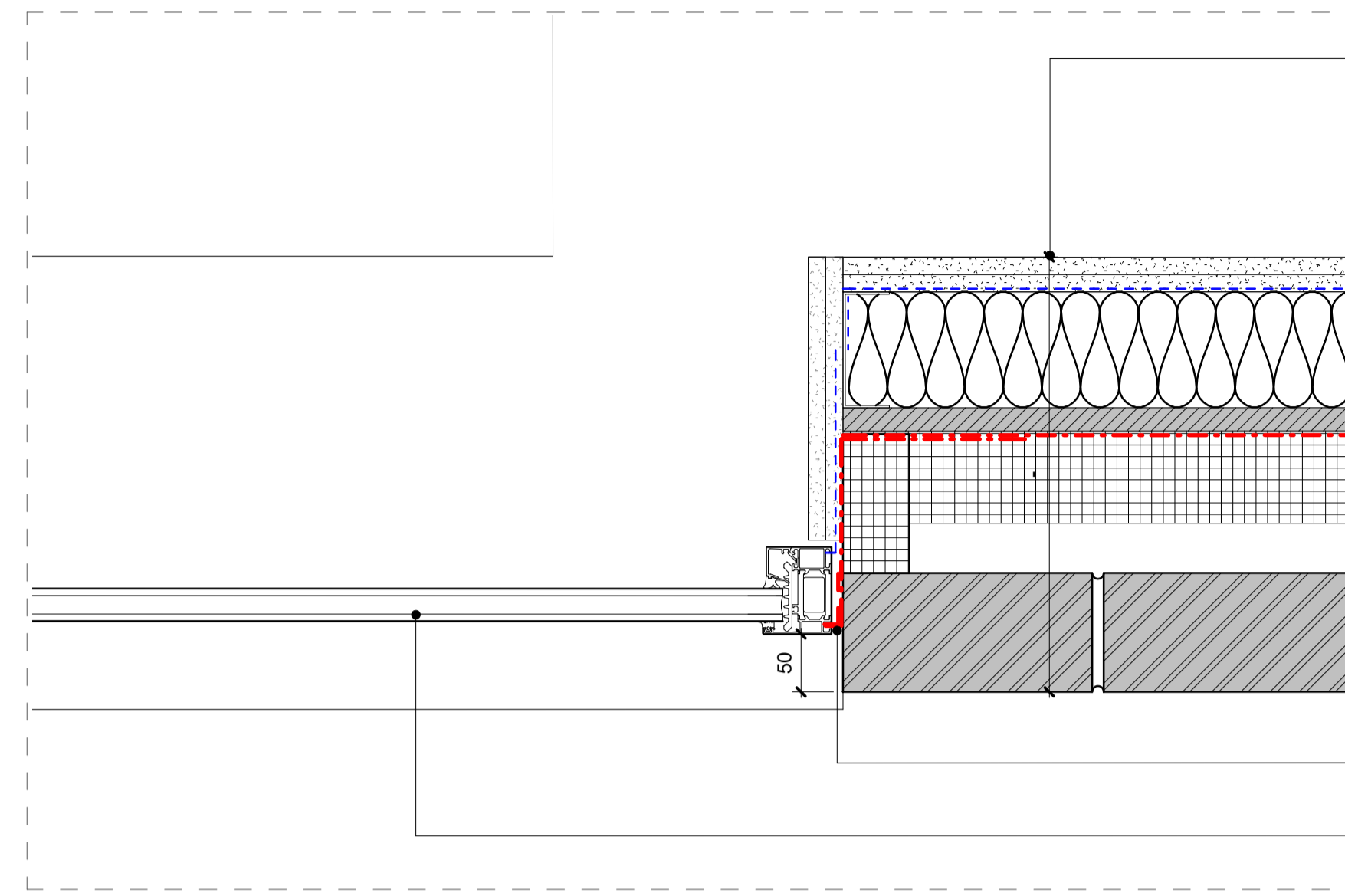
- TYPICAL EXTERNAL WALL BUILDUP
- 2No. acoustic plasterboard
  - Vapour barrier as P10/311
  - Lightweight steel frame as G10/151
  - In-fill mineral wool as P10/191A
  - Cement Board as H20/151
  - Breather membrane as P10/320
  - Partial fill cavity insulation as F30/156
  - Brick support ties as F30/262
  - Cavity
  - Brick bond as F10/111

Window system as L10/331

All window junctions to allow full EPDM seals as L10/331

Insulated cold break strip to reveals as P10/220

01 DETAILED PLAN-C1 INWARD OPENING JAMB

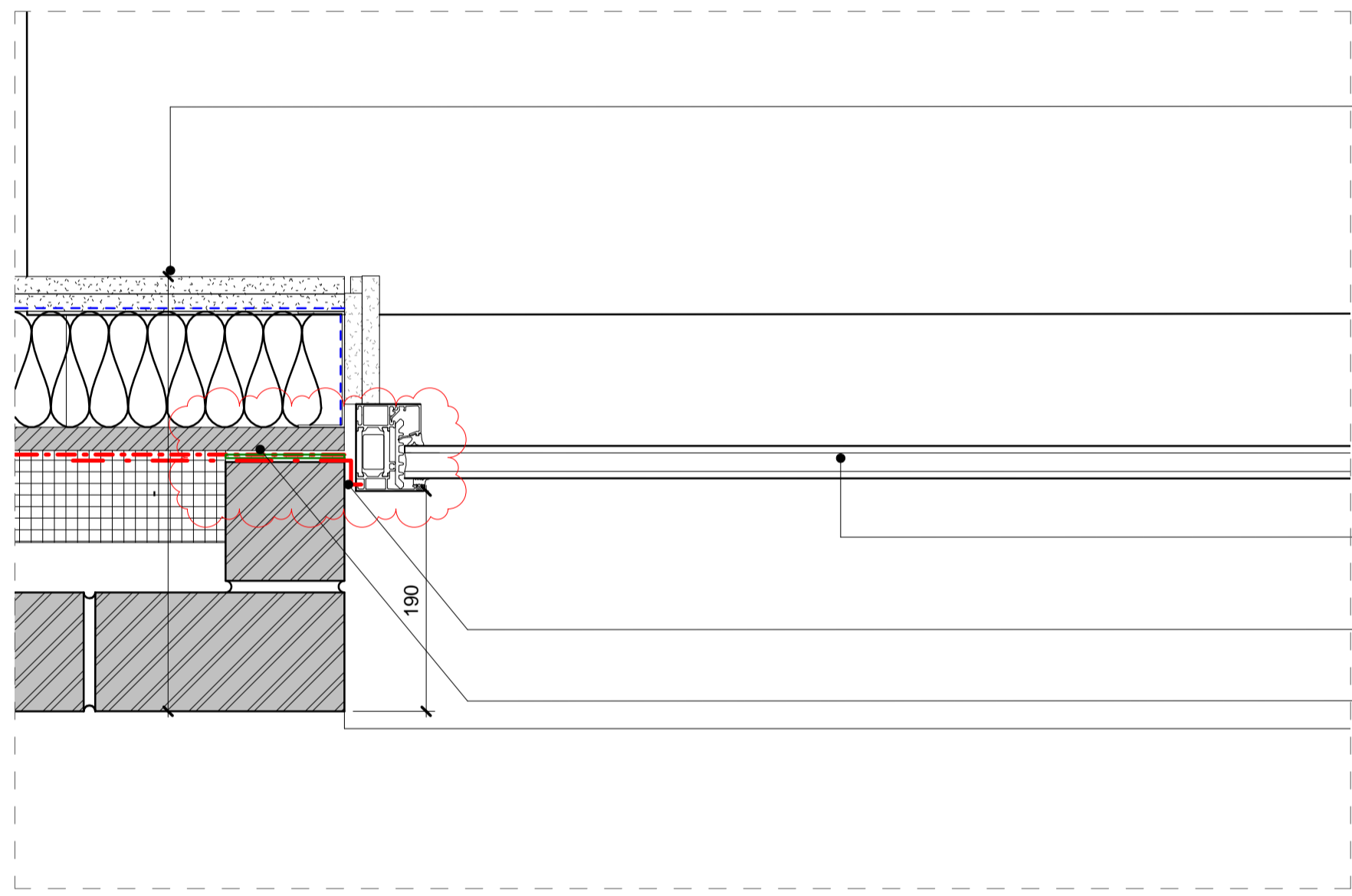


- TYPICAL EXTERNAL WALL BUILDUP
- 2No. acoustic plasterboard
  - Vapour barrier as P10/311
  - Lightweight steel frame as G10/151
  - In-fill mineral wool as P10/191A
  - Cement Board as H20/151
  - Breather membrane as P10/320
  - Partial fill cavity insulation as F30/156
  - Brick support ties as F30/262
  - Cavity
  - Brick bond as F10/111

All window junctions to allow full EPDM seals

Window system as L10/331

02 DETAILED PLAN- C1 STEPPED WINDOW JAMB



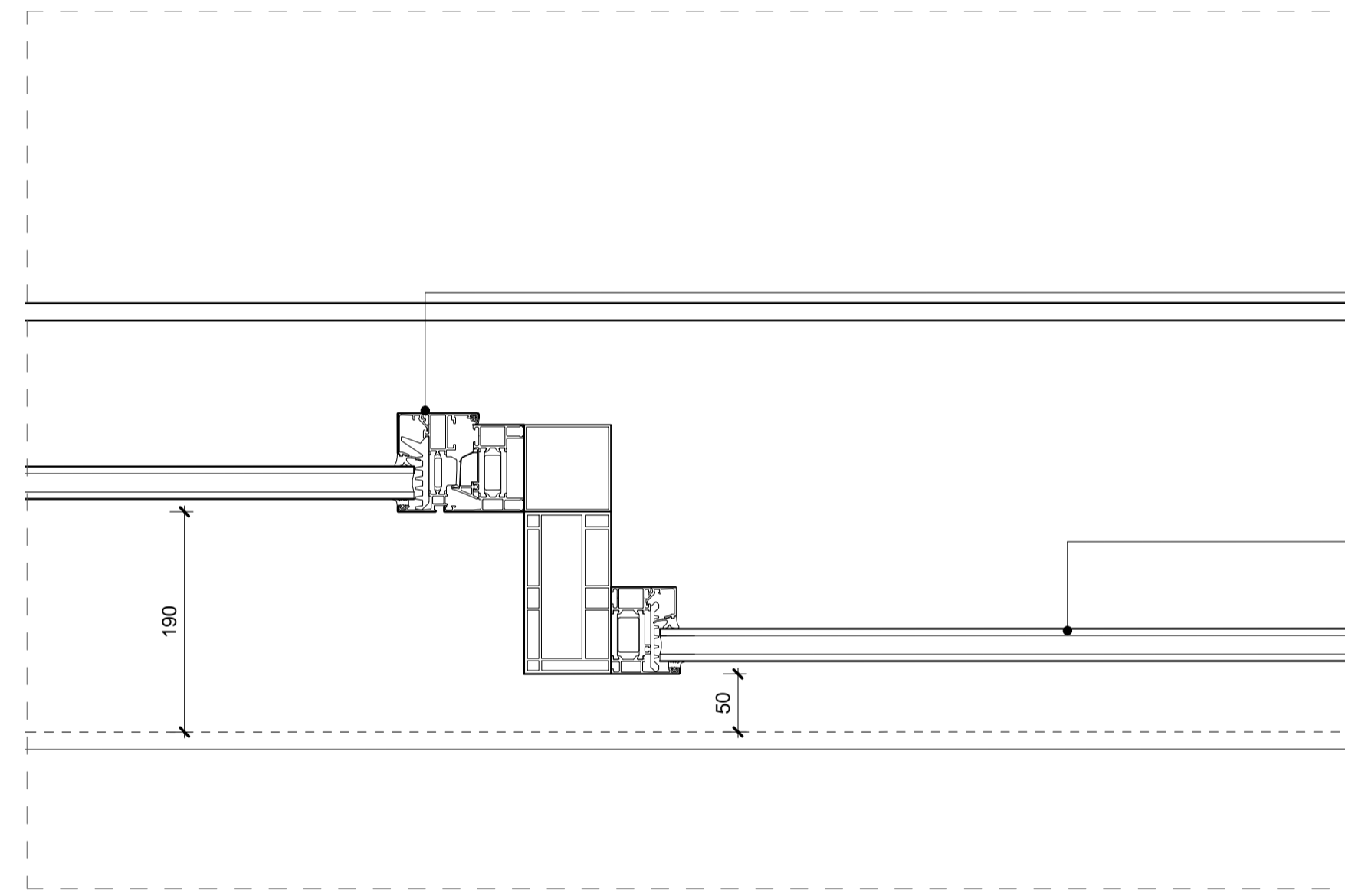
- TYPICAL EXTERNAL WALL BUILDUP
- 2No. acoustic plasterboard
  - Vapour barrier as P10/311
  - Lightweight steel frame as G10/151
  - In-fill mineral wool as P10/191A
  - Cement Board as H20/151
  - Breather membrane as P10/320
  - Partial fill cavity insulation as F30/156
  - Brick support ties as F30/262
  - Cavity
  - Brick bond as F10/111

Window system as L10/331

All window junctions to allow full EPDM seals as L10/331

Insulated cold break strip to reveals as P10/220

03 DETAILED PLAN-TYPICAL FIXED WINDOW JAMB



Inward opening window L10/331

Fixed windows L10/331

04 DETAILED PLAN- C1 STEPPED WINDOW CENTRE MULLION

KEY

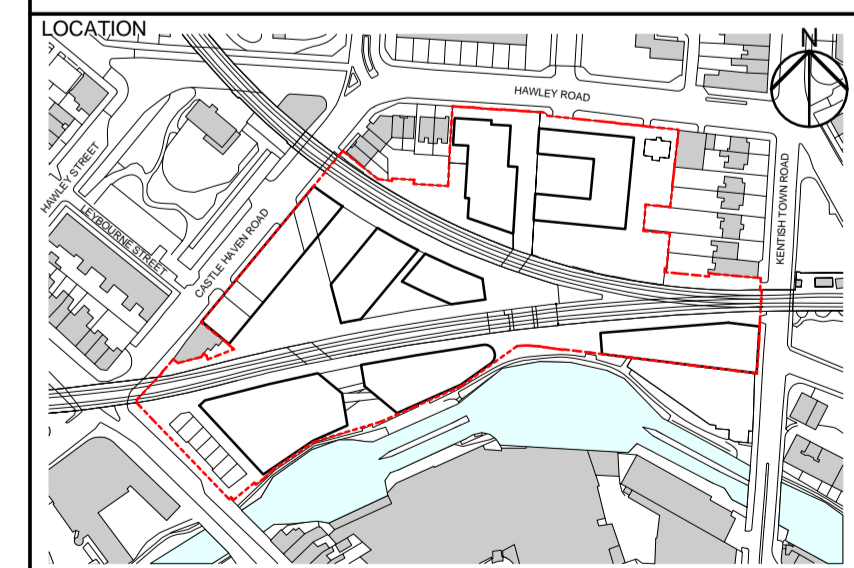
**AHMM MARK UPS FOR EMPLOYERS' REQUIRMENTS 18/12/15**

T 0 2 18/12/15 Issued for ER's  
T 0 1 26/06/15 Stage E Tender Issue

REV DATE DESCRIPTION

CONSULTANTS	
CLIENT:	Stanley Sidings
CONTRACTOR:	-
STRUCTURAL ENGINEER:	Walsh Group
MECHANICAL ENGINEER:	Hoare Lea
COST CONSULTANT:	Gardiner & Theobald
PROJECT MANAGER:	Gardiner & Theobald
ACOUSTIC CONSULTANT:	Hoare Lea
TRANSPORT CONSULTANT:	Arup
PLANNING CONSULTANT:	Gerald Eve
LANDSCAPE ARCHITECT:	Fabrik
CDM CO-ORDINATOR:	MSA Safety

- NOTE
1. Do not scale from this drawing.
  2. All dimensions to be checked on site by the contractor and such dimensions to be his responsibility. Report all drawing errors, omissions and discrepancies to the architect.
  3. This document may be issued in an uncontrolled CAD format to enable others to use it as background information to make alterations and/or additions. In that instance the file will be accompanied by a PDF version. It is for those making such alterations and additions to ensure that they make use of current background information.
  4. AHMM Ltd accepts no liability for any such alterations or additions to the background information or arising out of changes to background information which occur prior to alterations or additions being made.



**ALLFORD HALL MONAGHAN MORRIS**  
ARCHITECTS Ltd  
6-23 OLD STREET, LONDON, EC1V 9HL  
TEL 020 7251 5261 FAX 020 7251 5123 WEB WWW.AHMM.CO.UK

job title  
**CAMDEN LOCK VILLAGE**

drawing title / location  
**WINDOW JAMB DETAILS CONTINUED**

drawn by	checked	scale	status
NL	KH	1:5 @ A1	ER issue

project	drawing no.	revision
14045	CX_(21)_ 6004	T02