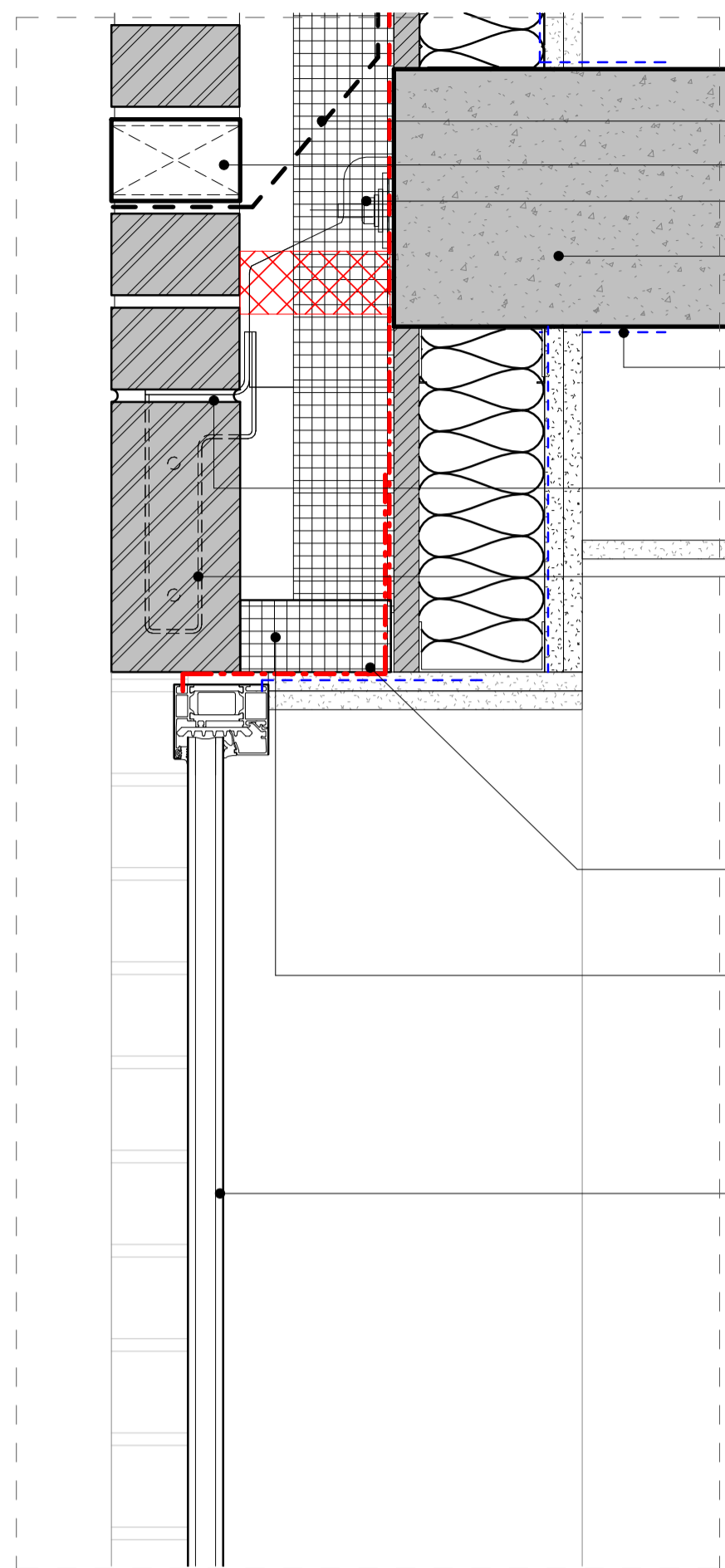


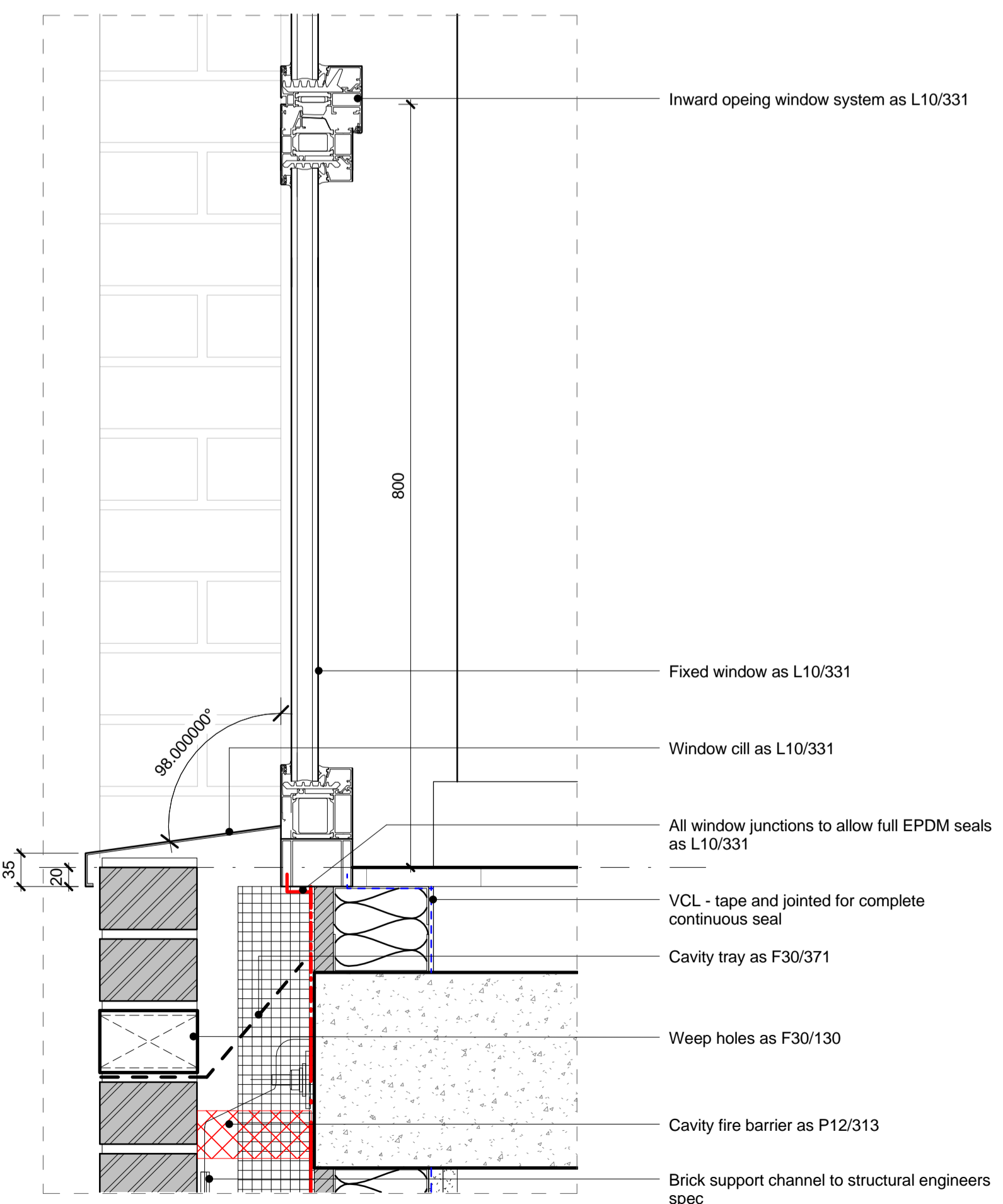
- Cavity tray as F30/371
 - Weep holes as F30/130
 - Brick support channel to structural engineers spec
 - Insitu concrete slab to structural engineers details
 - Cavity fire barrier as P12/313
 - VCL - tape and jointed for complete continuous seal
 - Pistol brick as F10/111
 - Brick soldier course with brick hanging support
 - All window junctions to allow full EPDM seals as L10/331
 - MVHR unit and ventilation grille (with insect and bird mesh) as H31/112
 - Window system as L10/331
- TYPICAL EXTERNAL WALL BUILDUP**
- 2No. acoustic plasterboard
 - Vapour barrier as P10/311
 - Lightweight steel frame as G10/151
 - In-fill mineral wool as P10/191A
 - Cement Board as H20/151
 - Breather membrane as P10/320
 - Partial fill cavity insulation as F30/156
 - Brick support ties as F30/262
 - Cavity
 - Brick bond as F10/111

01 DETAILED SECTION- C1 TYPICAL HEAD DETAIL



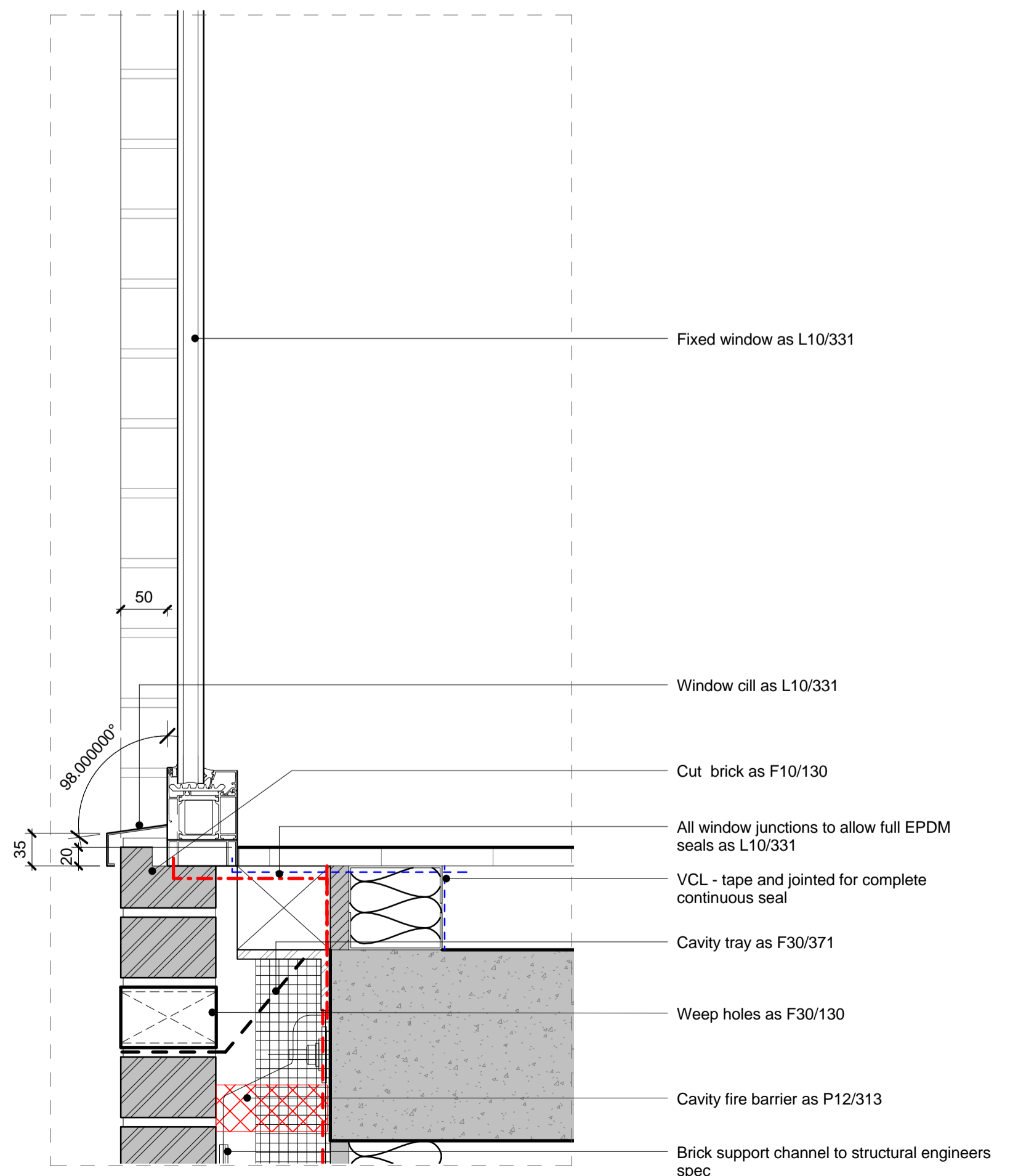
- Cavity tray as F30/371
 - Weep holes as F30/130
 - Brick support channel to structural engineers spec
 - Insitu concrete slab to structural engineers details
 - VCL - tape and jointed for complete continuous seal
 - Pistol brick as F10/111
 - Brick soldier course with brick hanging support
 - All window junctions to allow full EPDM seals
 - Insulated Cavity closer
 - Window system as L10/331
- TYPICAL EXTERNAL WALL BUILDUP**
- 2No. acoustic plasterboard
 - Vapour barrier as P10/311
 - Lightweight steel frame as G10/151
 - In-fill mineral wool as P10/191A
 - Cement Board as H20/151
 - Breather membrane as P10/320
 - Partial fill cavity insulation as F30/156
 - Brick support ties as F30/262
 - Cavity
 - Brick bond as F10/111

03 DETAILED SECTION- C1 STEPPED WINDOW HEAD DETAIL



- Inward opening window system as L10/331
- Fixed window as L10/331
- Window cill as L10/331
- All window junctions to allow full EPDM seals as L10/331
- VCL - tape and jointed for complete continuous seal
- Cavity tray as F30/371
- Weep holes as F30/130
- Cavity fire barrier as P12/313
- Brick support channel to structural engineers spec

02 DETAILED SECTION- C1 TYPICAL WINDOW CILL



- Fixed window as L10/331
- Window cill as L10/331
- Cut brick as F10/130
- All window junctions to allow full EPDM seals as L10/331
- VCL - tape and jointed for complete continuous seal
- Cavity tray as F30/371
- Weep holes as F30/130
- Cavity fire barrier as P12/313
- Brick support channel to structural engineers spec

04 DETAILED SECTION- C1 STEPPED WINDOW CILL DETAIL

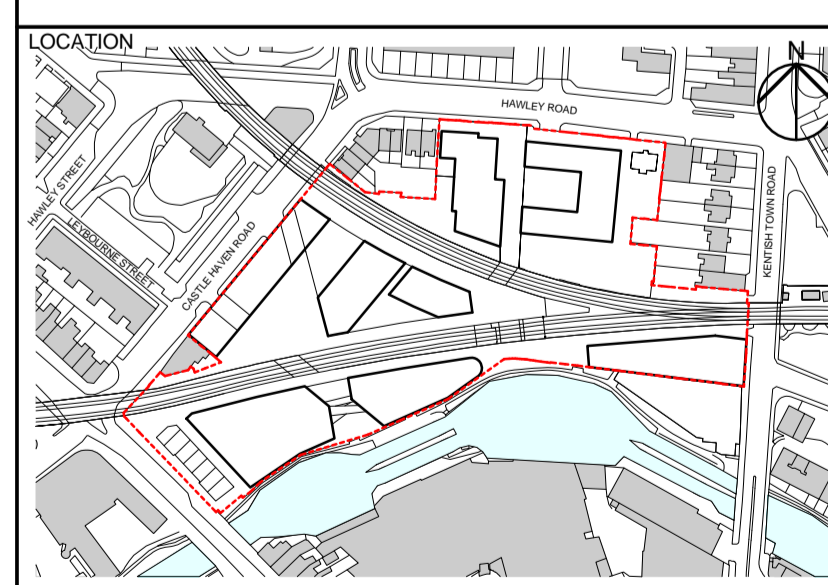
KEY

T 0 1 26/06/15 Stage E Tender Issue

REV	DATE	DESCRIPTION

CONSULTANTS	
CLIENT:	Stanley Sidings
CONTRACTOR:	-
STRUCTURAL ENGINEER:	Walsh Group
MECHANICAL ENGINEER:	Hoare Lea
COST CONSULTANT:	Gardiner & Theobald
PROJECT MANAGER:	Gardiner & Theobald
ACOUSTIC CONSULTANT:	Hoare Lea
TRANSPORT CONSULTANT:	Arup
PLANNING CONSULTANT:	Gerald Eve
LANDSCAPE ARCHITECT:	Fabrik
CDM CO-ORDINATOR:	MSA Safety

- NOTE
1. Do not scale from this drawing.
 2. All dimensions to be checked on site by the contractor and such dimensions to be his responsibility. Report all drawing errors, omissions and discrepancies to the architect.
 3. This document may be issued in an uncontrolled CAD format to enable others to use it as background information to make alterations and/or additions. In that instance the file will be accompanied by a PDF version. It is for those making such alterations and additions to ensure that they make use of current background information.
 4. AHMM Ltd accepts no liability for any such alterations or additions to the background information or arising out of changes to background information which occur prior to alterations or additions being made.



ALLFORD HALL MONAGHAN MORRIS
 ARCHITECTS Ltd
 6-23 OLD STREET, LONDON, EC1V 9HL
 TEL 020 7251 5261 FAX 020 7251 5123 WEB WWW.AHMM.CO.UK

job title
CAMDEN LOCK VILLAGE
 drawing title / location
WINDOW HEAD AND CILL DETAILS
CONTINUED

drawn by	checked	scale	status
NL	KH	1 : 5 @ A1	TENDER
project	drawing no.	revision	
14045	CX_(21)_ 6002	T01	