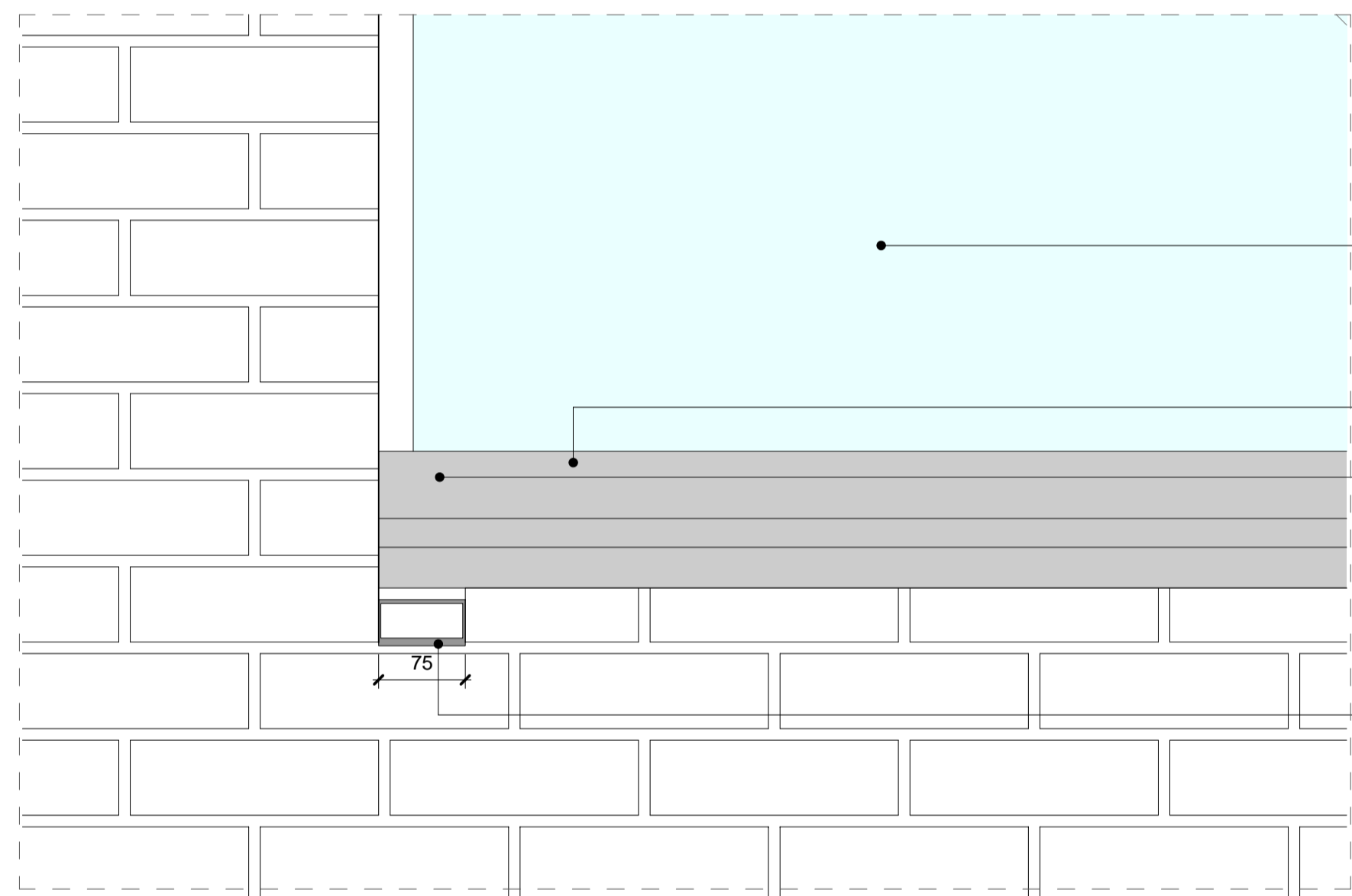


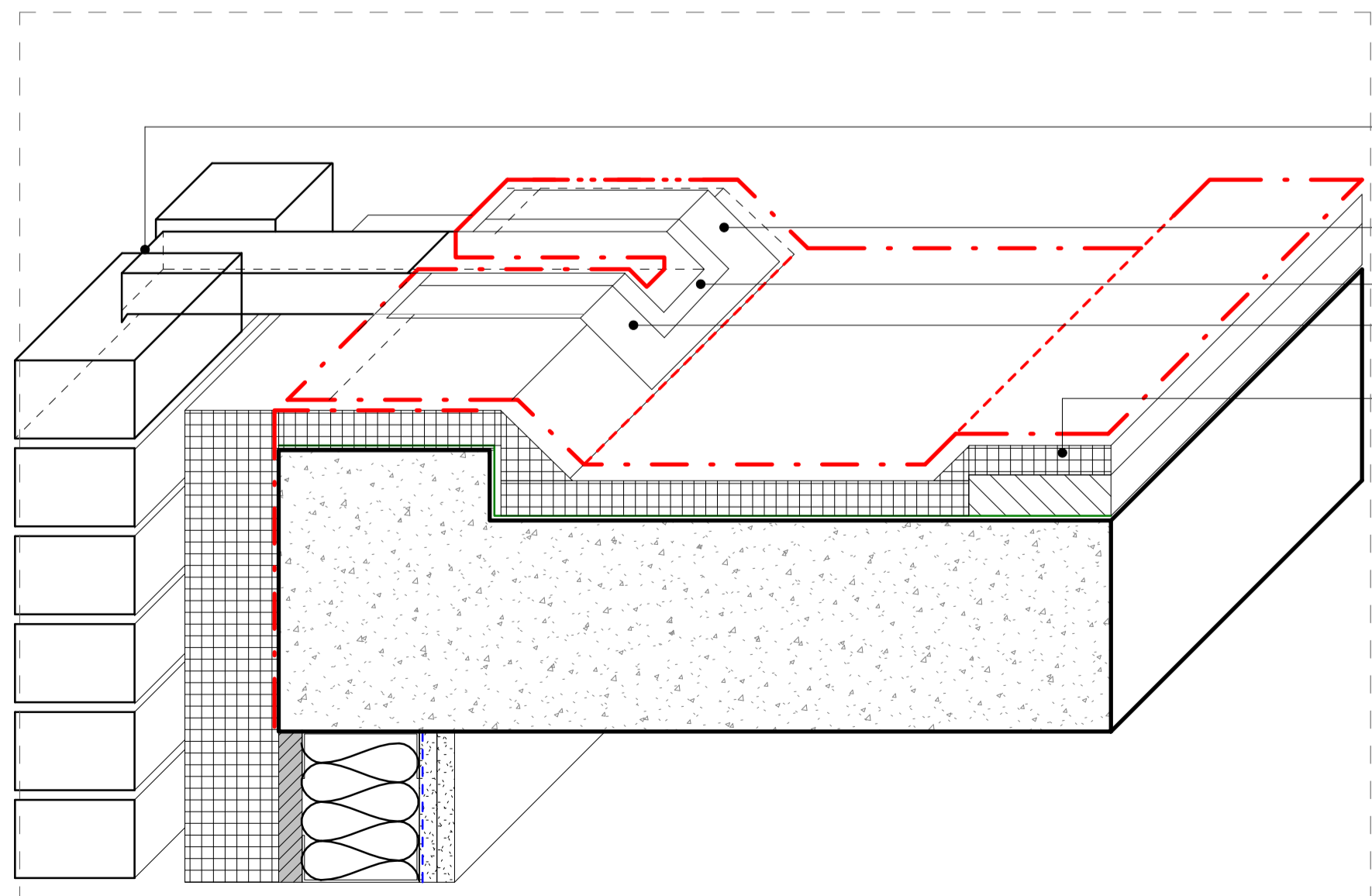
- PPC metal shoot with drip detail and bitumen sleeve as H31
- PPC metal pressing as H31/111
- Glass notched to allow shoot to pass through
- PPC metal to form clamp for bitumen sleeve
- Waterproofing dressed over bitumen sleeve
- Insulation a locally reduced to form drainage valley
- ROOF BUILDUP
  - Timber decking on treated batten on shims
  - waterproofing as J41/111
  - 2no. insulations as J41/231
  - Vapour barrier as J41/111
- Insitu concrete slab and upstand to structural engineers details

01 DETAILED SECTION- RECESSED BALCONY RAIN WATER SHOOT



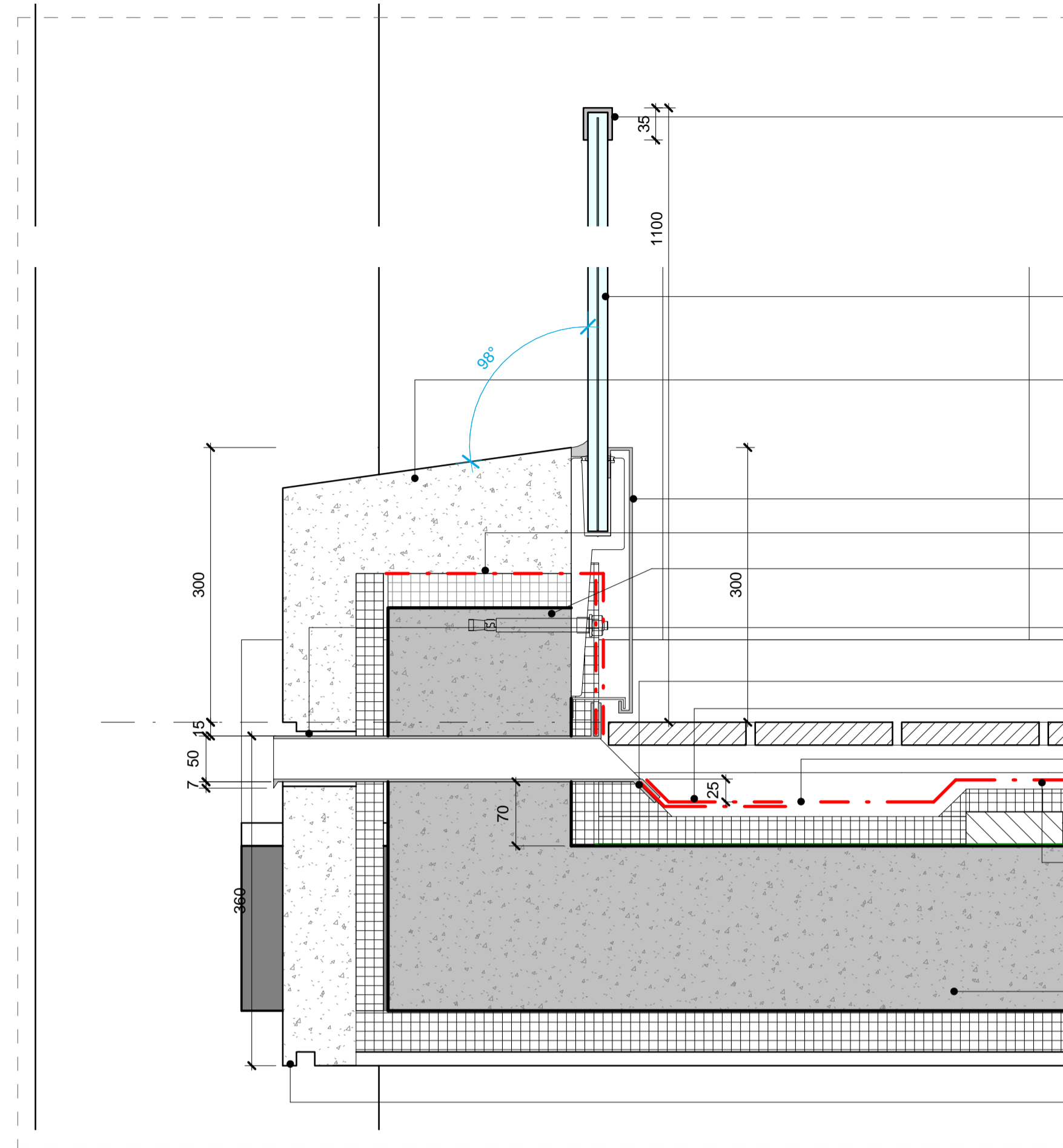
- Glass balustrade as L30/553
- PPC metal pressing as H31/111
- Glass notched behind to allow shoot to pass through
- PPC metal shoot with drip detail H31

02 DETAILED ELEVATION- RAIN WATER SHOOT



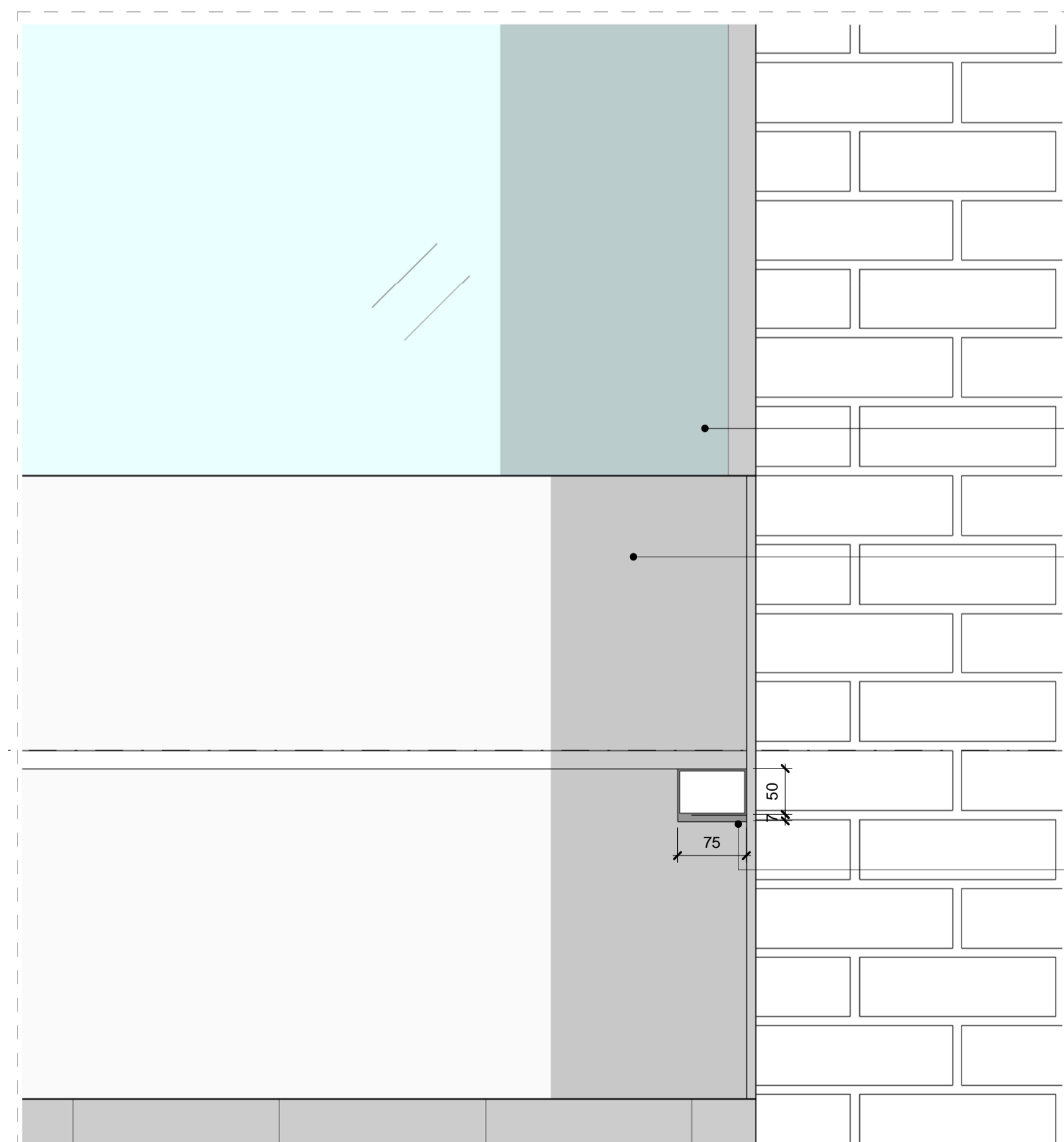
- PPC metal shoot with drip detail and flange as H31
- PPC metal flange with waterproofing dressed over
- PPC metal to form clamp for bitumen sleeve
- Waterproofing dressed over bitumen sleeve
- Insulation a locally reduced to form drainage valley
- C1 Level 3  
FFL +37500

03 AXONOMETRIC- RAINWATER SHOOT



- Stainless steel cap as L30/553
- Glass balustrade as L30/553
- Precast concrete facing as F31/113
- PPC metal pressing as H31/111
- Rigid insulation as J41/232
- Insitu concrete slab and upstand to structural engineers details
- PPC metal shoot with drip detail and bitumen sleeve as H31
- PPC metal to form clamp for bitumen sleeve
- Waterproofing dressed over bitumen sleeve
- Insulation a locally reduced to form drainage valley
- ROOF BUILDUP
  - Timber decking on treated batten on shims as Q55/111
  - waterproofing as J41/111
  - 2no. insulations as J41/231
  - Vapour barrier as J41/111
- Insitu concrete slab to structural engineers details
- Drip profile cast into concrete

04 DETAILED SECTION-C1PRECAST CONCRETE RAIN WATER SHOOT



- Glass balustrade as L30/553
- Precast facing as F31/113
- PPC metal shoot with drip detail H31

05 DETAILED ELEVATION - PRECAST CONCRETE RW Shoot

KEY

| REV   | DATE     | DESCRIPTION   |
|-------|----------|---------------|
| T 0 1 | 02/09/15 | STAGE E ISSUE |

CONSULTANTS

|                       |                     |
|-----------------------|---------------------|
| CLIENT:               | Stanley Sidings     |
| CONTRACTOR:           | -                   |
| STRUCTURAL ENGINEER:  | Walsh Group         |
| MECHANICAL ENGINEER:  | Hoare Lea           |
| COST CONSULTANT:      | Gardiner & Theobald |
| PROJECT MANAGER:      | Gardiner & Theobald |
| ACOUSTIC CONSULTANT:  | Hoare Lea           |
| TRANSPORT CONSULTANT: | Arup                |
| PLANNING CONSULTANT:  | Gerald Eve          |
| LANDSCAPE ARCHITECT:  | Fabrik              |
| CDM CO-ORDINATOR:     | MSA Safety          |

NOTE

- Do not scale from this drawing.
- All dimensions to be checked on site by the contractor and such dimensions to be his responsibility. Report all drawing errors, omissions and discrepancies to the architect.
- This document may be issued in an uncontrolled CAD format to enable others to use it as background information to make alterations and/or additions. In that instance the file will be accompanied by a PDF version. It is for those making such alterations and additions to ensure that they make use of current background information.
- AHMM Ltd accepts no liability for any such alterations or additions to the background information or arising out of changes to background information which occur prior to alterations or additions being made.

LOCATION

**ALFORD HALL MONAGHAN MORRIS**  
 ARCHITECTS Ltd  
 5-23 OLD STREET, LONDON, EC1V 9HL  
 TEL 020 7251 5261 FAX 020 7251 5123 WEB WWW.AHMM.CO.UK

job title  
**CAMDEN LOCK VILLAGE**  
 drawing title / location  
**RAINWATER SHOOT DETAILS**

|          |               |            |               |
|----------|---------------|------------|---------------|
| drawn by | checked       | scale      | status        |
| NL       | KH            | 1 : 5 @ A1 | Stage E Issue |
| project  | drawing no.   | revision   |               |
| 14045    | CX_(21)_ 6007 | T01        |               |