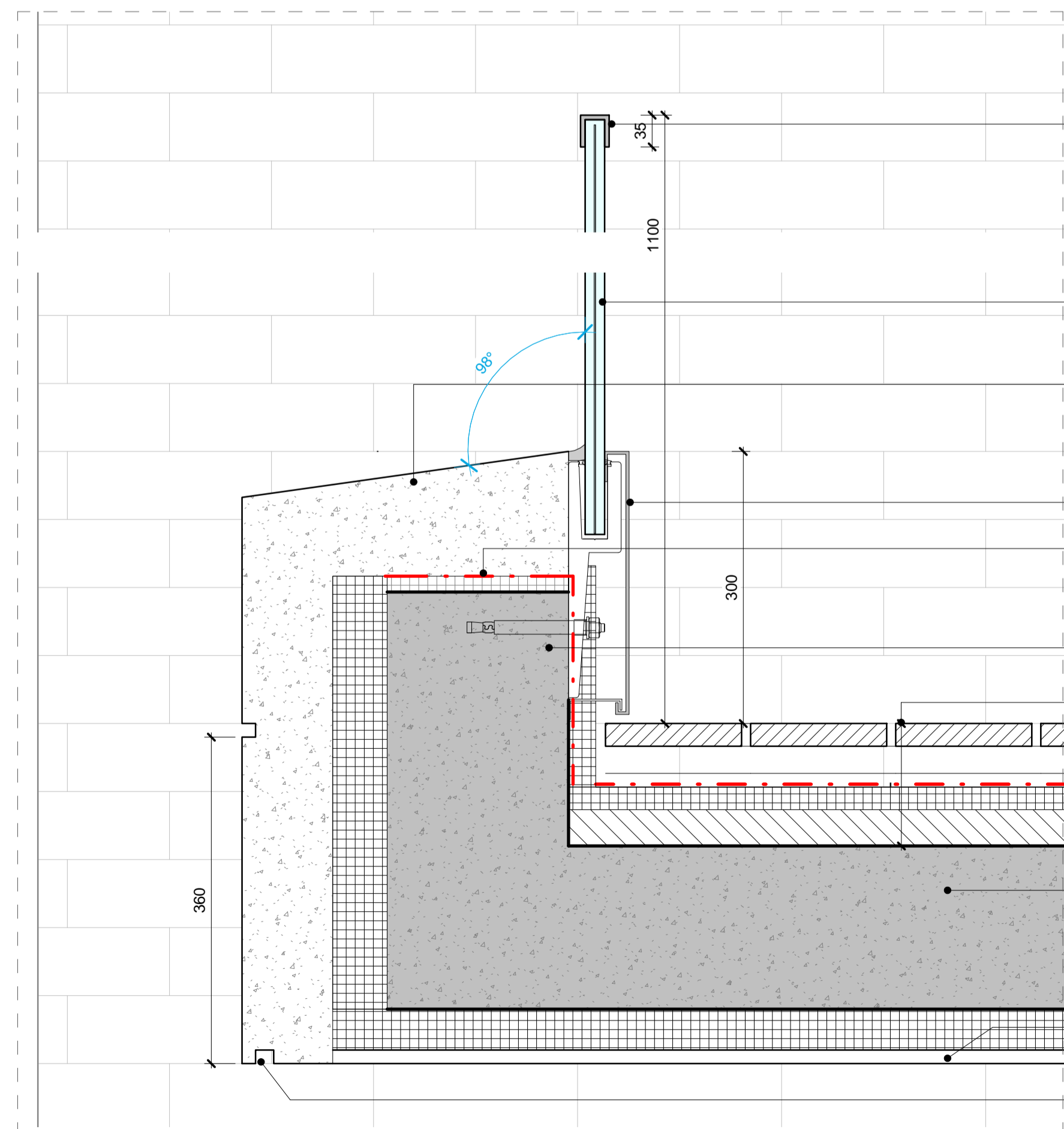


- Stainless steel cap as L30/553
- Glass balustrade as L30/553
- PPC metal pressing as H31/111
- Rigid insulation as J41/
- Insitu concrete slab and upstand to structural engineers details
- ROOF BUILDUP
  - Timber decking on treated batten on shims AS Q55/111
  - waterproofing as J41/111
  - 2no. insulations as J41/231
  - Vapour barrier as J41/111
- Insitu concrete slab to structural engineers details

01 DETAILED SECTION-C1BRICK BALCONY



- Stainless steel cap as L30/553
- Glass balustrade as L30/553
- Precast concrete facing as F31/113
- PPC metal pressing as H31/111
- Rigid insulation as J41/232
- Insitu concrete slab and upstand to structural engineers details
- ROOF BUILDUP
  - Timber decking on treated batten on shims as Q55/111
  - waterproofing as J41/111
  - 2no. insulations as J41/231
  - Vapour barrier as J41/111
- Insitu concrete slab to structural engineers details
- Insulated render system as H20
- Drip profile cast into concrete

02 DETAILED SECTION-C1PRECAST CONCRETE BALCONY  
1:5

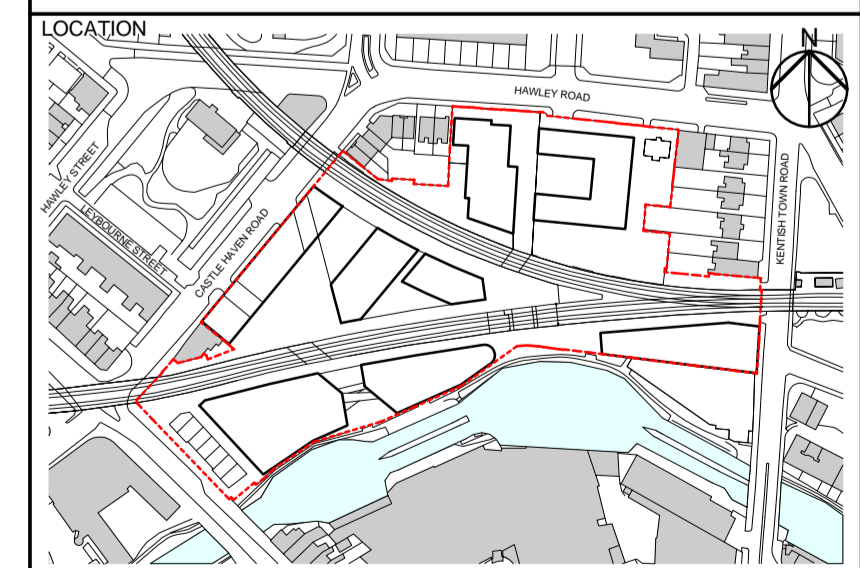
KEY

T 0 1 26/06/15 Stage E Tender Issue

REV DATE DESCRIPTION

CONSULTANTS	
CLIENT:	Stanley Sidings
CONTRACTOR:	-
STRUCTURAL ENGINEER:	Walsh Group
MECHANICAL ENGINEER:	Hoare Lea
COST CONSULTANT:	Gardiner & Theobald
PROJECT MANAGER:	Gardiner & Theobald
ACOUSTIC CONSULTANT:	Hoare Lea
TRANSPORT CONSULTANT:	Arup
PLANNING CONSULTANT:	Gerald Eve
LANDSCAPE ARCHITECT:	Fabrik
CDM CO-ORDINATOR:	MSA Safety

- NOTE
1. Do not scale from this drawing.
  2. All dimensions to be checked on site by the contractor and such dimensions to be his responsibility. Report all drawing errors, omissions and discrepancies to the architect.
  3. This document may be issued in an uncontrolled CAD format to enable others to use it as background information to make alterations and/or additions. In that instance the file will be accompanied by a PDF version. It is for those making such alterations and additions to ensure that they make use of current background information.
  4. AHMM Ltd accepts no liability for any such alterations or additions to the background information or arising out of changes to background information which occur prior to alterations of additions being made.



**ALLFORD HALL MONAGHAN MORRIS**  
ARCHITECTS Ltd  
6-23 OLD STREET, LONDON, EC1V 9HL  
TEL 020 7251 5261 FAX 020 7251 5123 WEB WWW.AHMM.CO.UK

job title  
**CAMDEN LOCK VILLAGE**  
drawing title / location  
**C1 BALCONY FACING DETAILS**

drawn by	checked	scale	status
NL	KH	1:5 @ A1	TENDER
project	drawing no.	revision	
14045	C1_(21)_ 6000	T01	