



Existing shop front



Existing threshold and frame chipped requires weather sealing



Chipped paint to framework



Repair required to patch up old signage locations



Clean and make good stall riser and sills

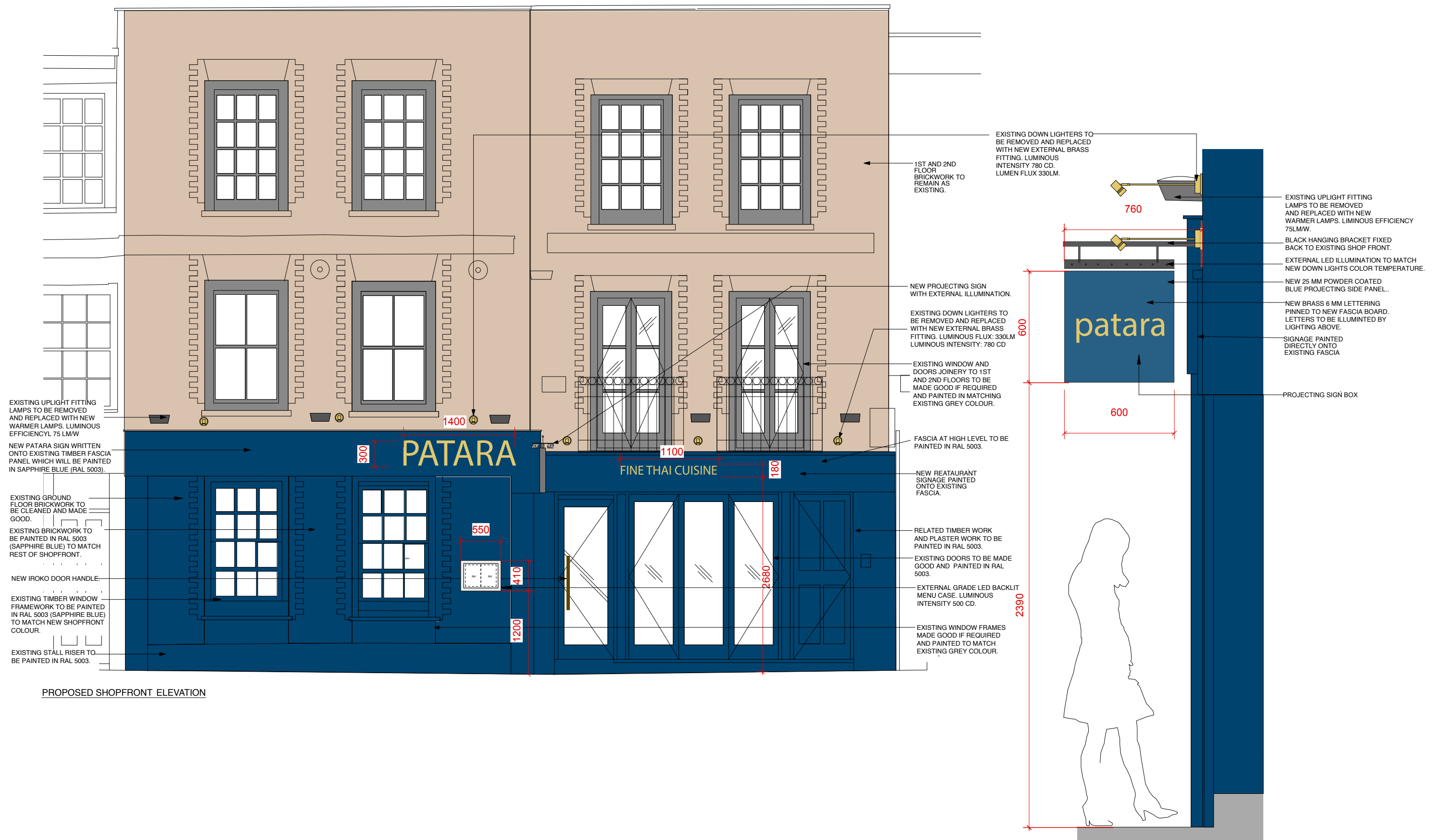


Clean and make good to framework and windows

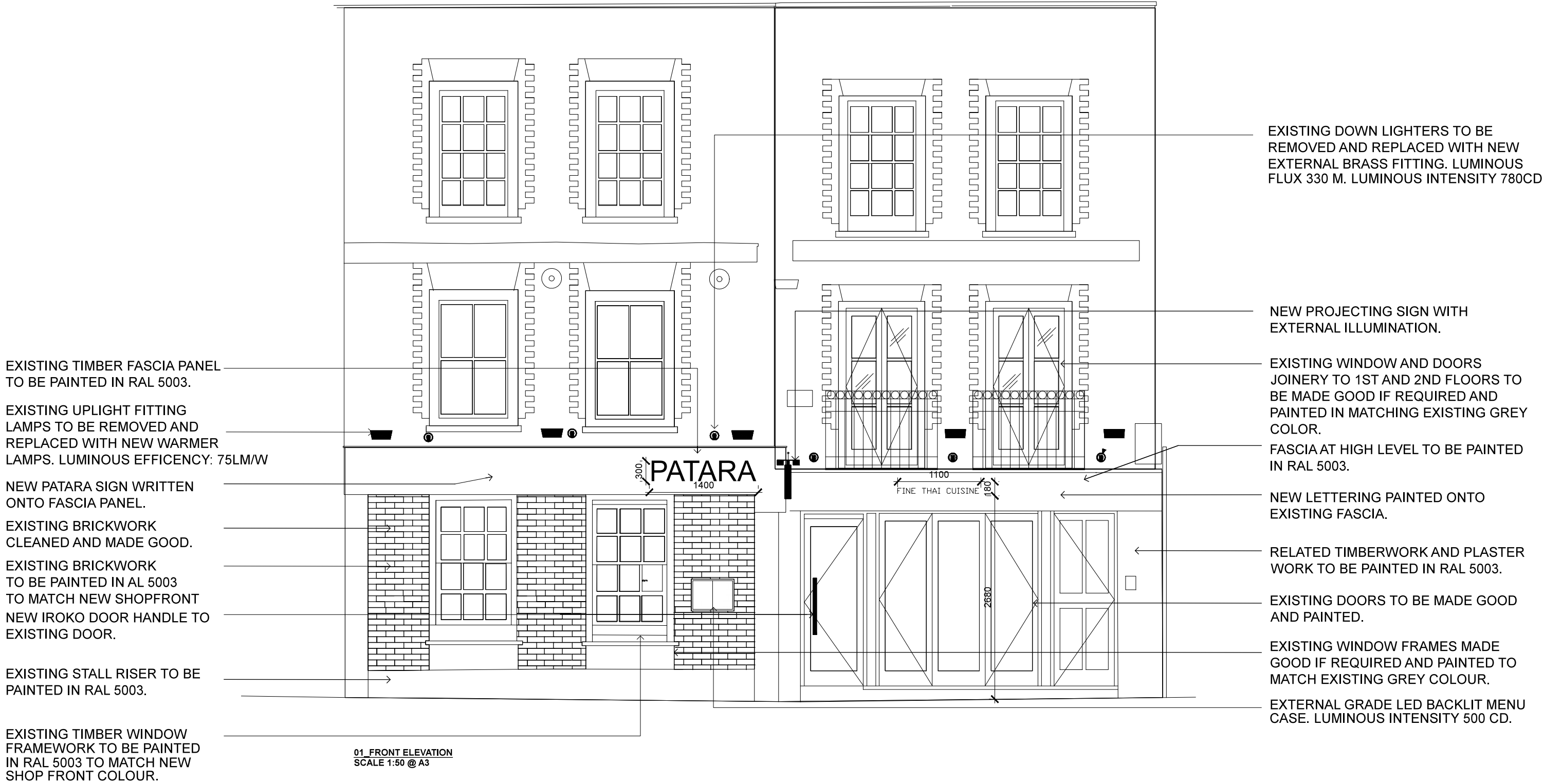


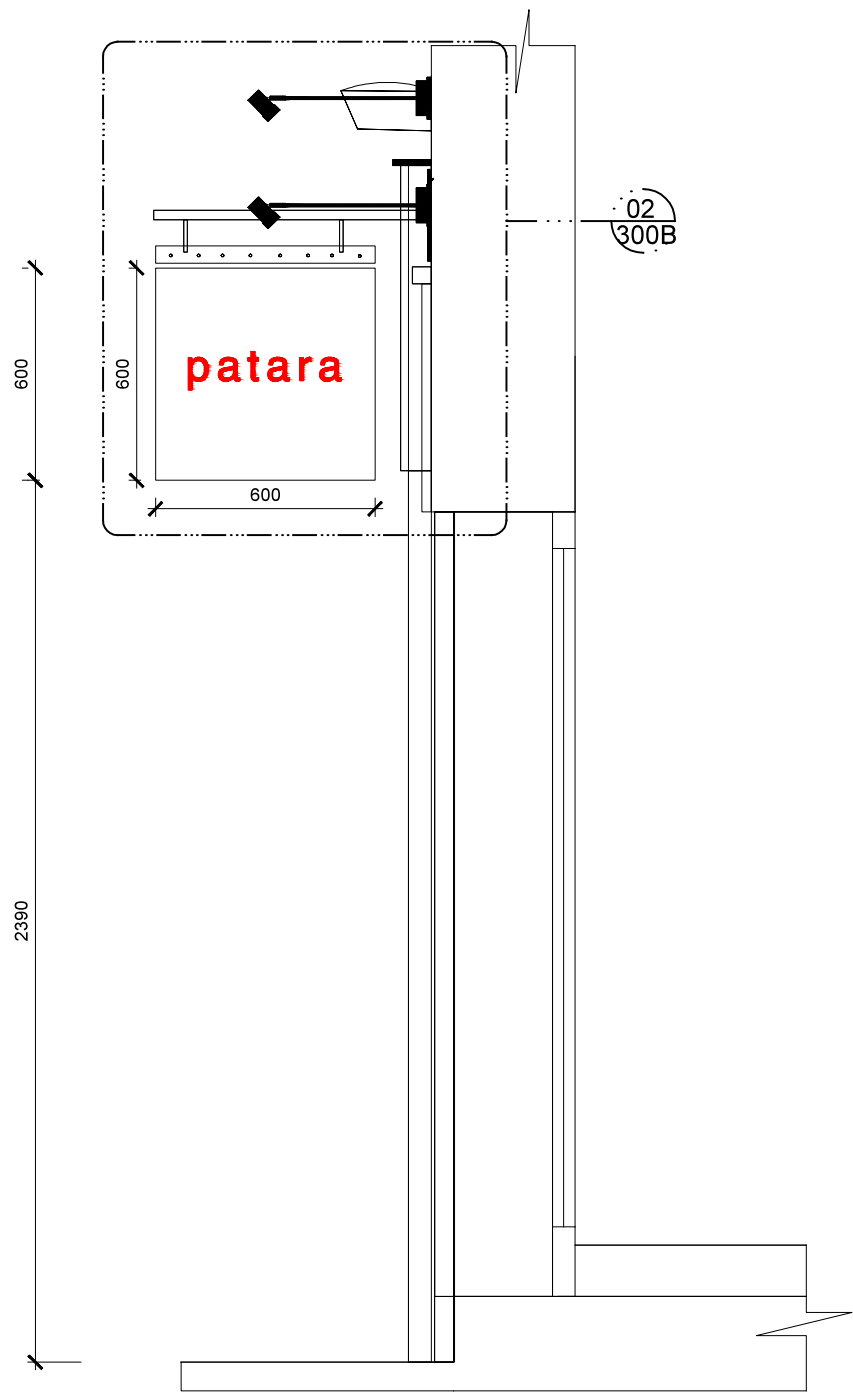
Low level paint chipped at entry point



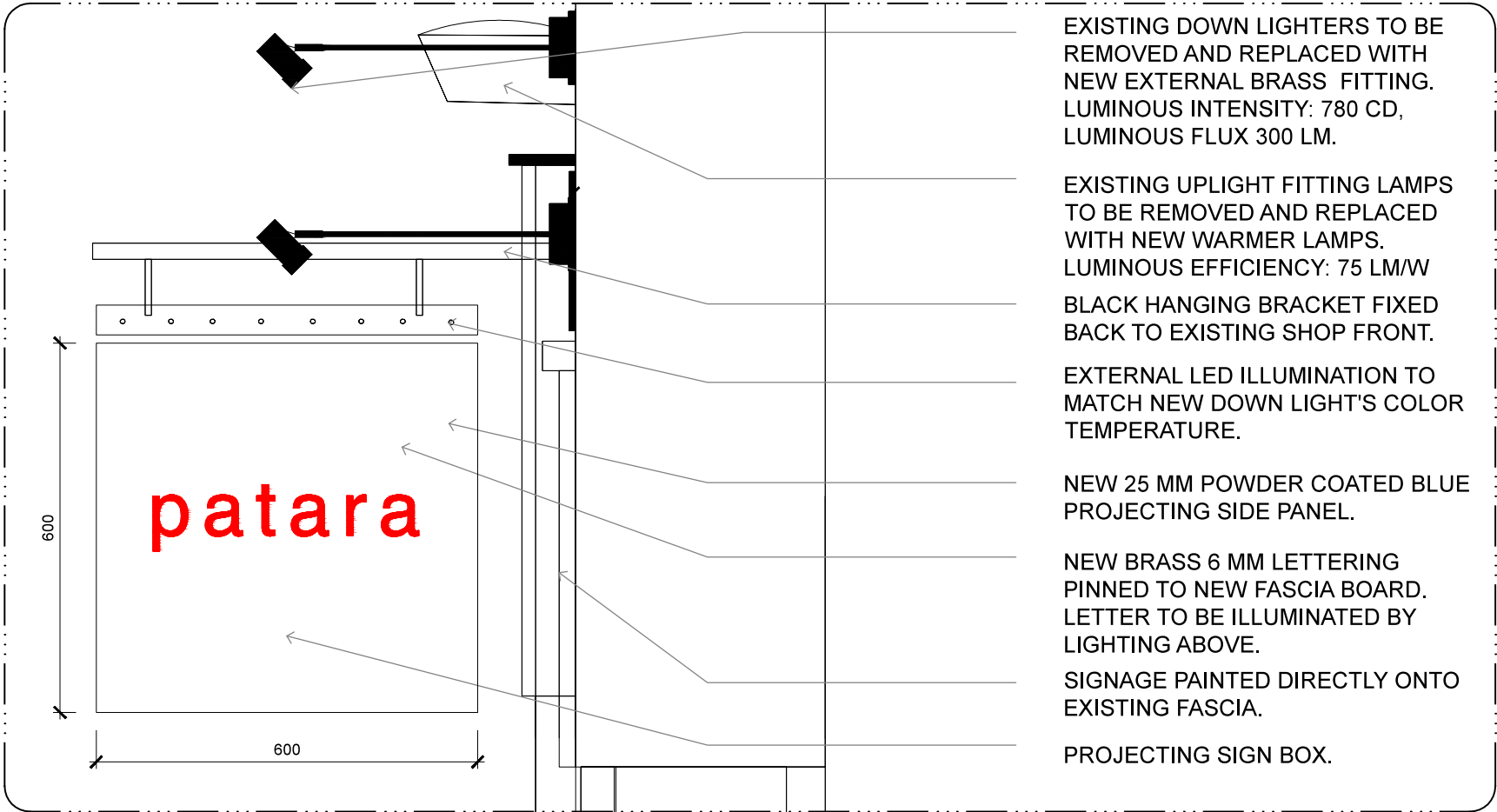








01. SIDE ELEVATION  
SCALE 1:20 @ A3



02. DETAIL  
SCALE 1:10 @ A3

EXISTING DOWN LIGHTERS TO BE REMOVED AND REPLACED WITH NEW EXTERNAL BRASS FITTING. LUMINOUS INTENSITY: 780 CD, LUMINOUS FLUX 300 LM.

EXISTING UPLIGHT FITTING LAMPS TO BE REMOVED AND REPLACED WITH NEW WARMER LAMPS. LUMINOUS EFFICIENCY: 75 LM/W  
BLACK HANGING BRACKET FIXED BACK TO EXISTING SHOP FRONT.

EXTERNAL LED ILLUMINATION TO MATCH NEW DOWN LIGHT'S COLOR TEMPERATURE.

NEW 25 MM POWDER COATED BLUE PROJECTING SIDE PANEL.

NEW BRASS 6 MM LETTERING PINNED TO NEW FASCIA BOARD. LETTER TO BE ILLUMINATED BY LIGHTING ABOVE.

SIGNAGE PAINTED DIRECTLY ONTO EXISTING FASCIA.

PROJECTING SIGN BOX.