

Provision for the storage and collection of waste has been designed in accordance with the requirements of policy CS18 of the London Borough of Camden Local Development Framework Core Strategy and policies DP26 and DP28 of the LBC LDF Development Policies.

INTERNAL BIN STORE PROVISION

Waste Storage Volume Required:
 3-bed units = 240 litres
 2-bed units = 170 litres
 1-bed units = 100 litres

At least half of total volume to be for recyclables.
 Storage containers to be housed beneath kitchen units and/or in utility rooms.

Typical containers:
 Green box for recyclables: 55 litres (390x585mm x350 tall)
 Food waste caddy: 7 litres (252x229mm x252 tall)

In 3-bed unit the following configuration will be provided:
 3x Green boxes for recyclables = 165 litres
 1x Food waste caddy = 7 litres
 1x General waste bin = 70 litres min

In 2-bed units the following configuration will be provided:
 2x Green boxes for recyclables = 110 litres
 1x Food waste caddy = 7 litres
 1x General waste bin = 60 litres min

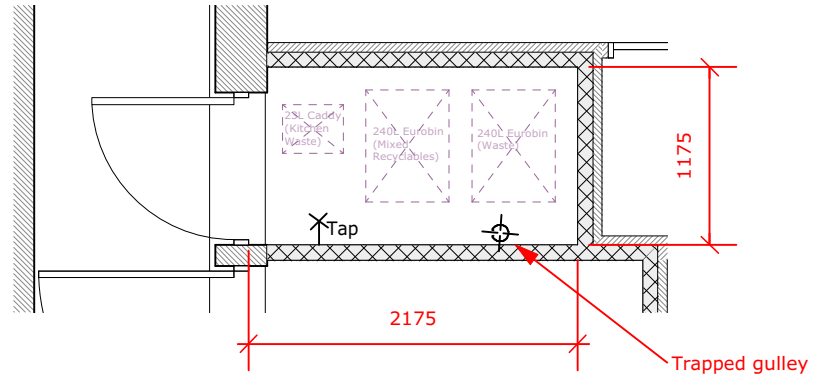
In 1-bed units the following configuration will be provided:
 1x Green box for recyclables = 55 litres
 1x Food waste caddy = 7 litres
 1x General waste bin = 40 litres min

EXTERNAL BIN STORE 1

Floor to ceiling height = approx. 2495mm
 Walls in blockwork, trapped gully to floor, hose union tap for washing down store

Storage required for 2 rear houses:
 1 x 3-bed unit and 1 x 2-bed unit
 Waste Storage Volume Required = (1 x 240) + (1 x 170) = 410litres

Proposal is for 1 x 240litre Eurobin for Mixed Recyclables, 1 x 240litre Eurobin for General Waste and 1 x 23litre kitchen waste caddy

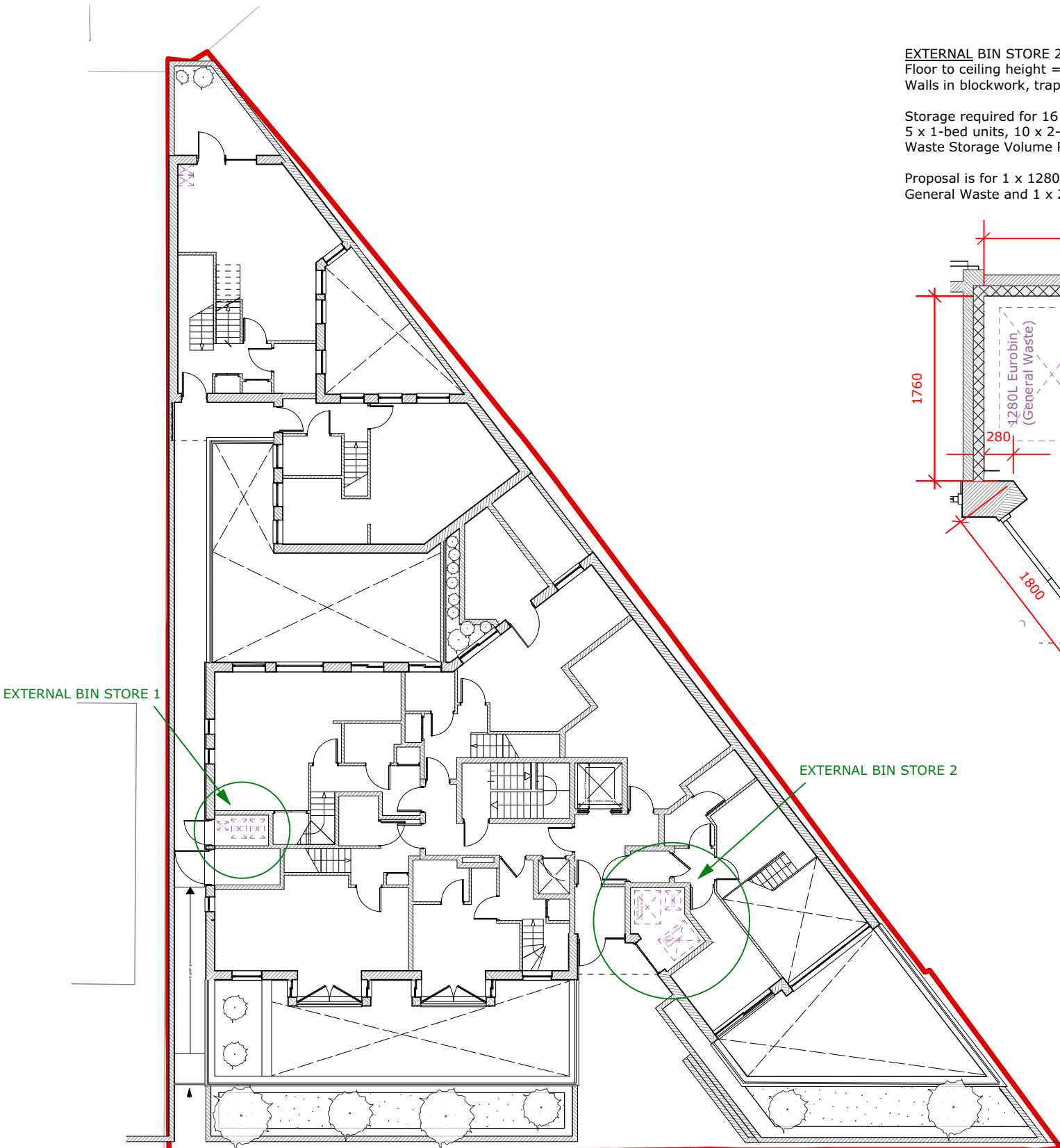
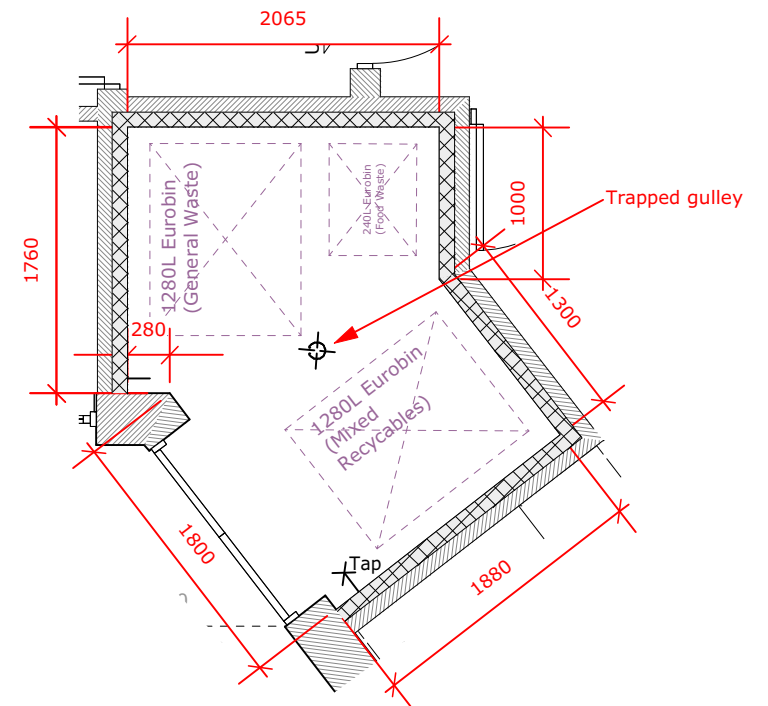


EXTERNAL BIN STORE 2

Floor to ceiling height = approx. 2650mm
 Walls in blockwork, trapped gully to floor, hose union tap for washing down store

Storage required for 16 residential units in main block:
 5 x 1-bed units, 10 x 2-bed units and 1 x 3-bed unit
 Waste Storage Volume Required = (5 x 100) + (10 x 170) + (1 x 240) = 2440litres

Proposal is for 1 x 1280litre Bulk bin for Mixed Recyclables, 1 x 1280litre Bulk bin for General Waste and 1 x 240litre Eurobin for Kitchen Waste



P1 11/4/16 Bin store info updated for Planning Condition discharge revisions:

All dimensions and areas are approximate and are to be verified on site. Do not scale.

Purpose of issue:

For Approval

NMA Norton Mayfield Architects
 Harland Works, Unit 7
 70 John Street
 Sheffield
 S2 4QU
 Tel: 0114 270 0014
 Sheffield & London
 www.nortonmayfield.co.uk

Client:

Dexbay Properties Ltd

Project Title:

42 Caversham Road
 London, NW5 2DS

Drawing No:

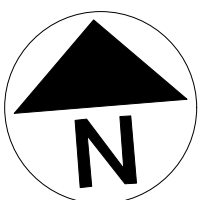
1217-NMP-XX-00-DR-A-00102

Drawing title:

Bin Storage Layouts

Project No: Status: Rev: Scale:

1217 S2 P1 1:50 / 1:200@A3



1217-NMP-XX-ZZ-M2-A-00100-VWX