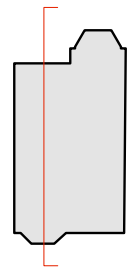
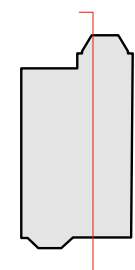
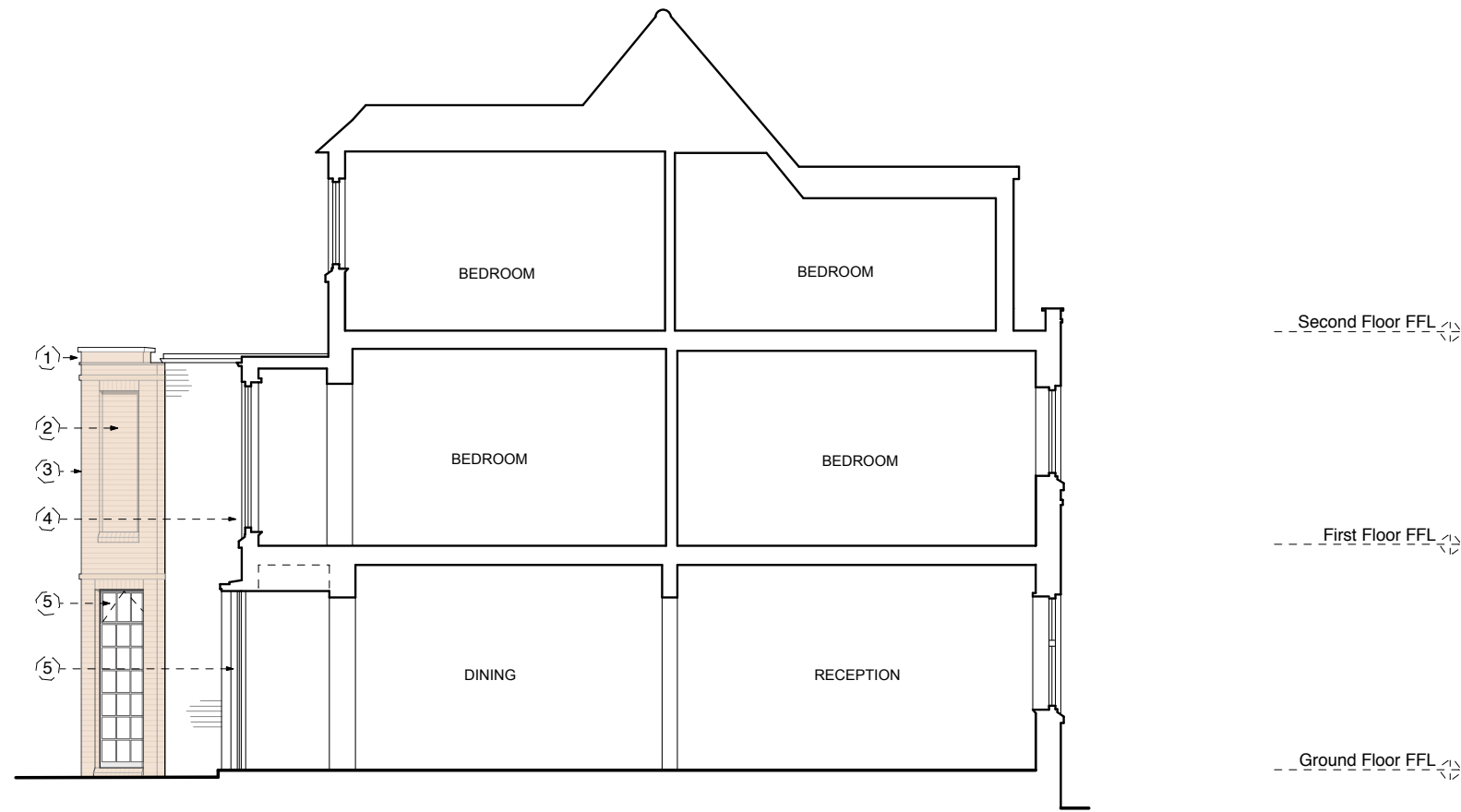


### Drawing Key

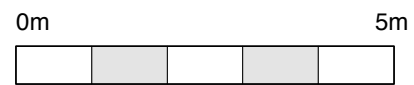
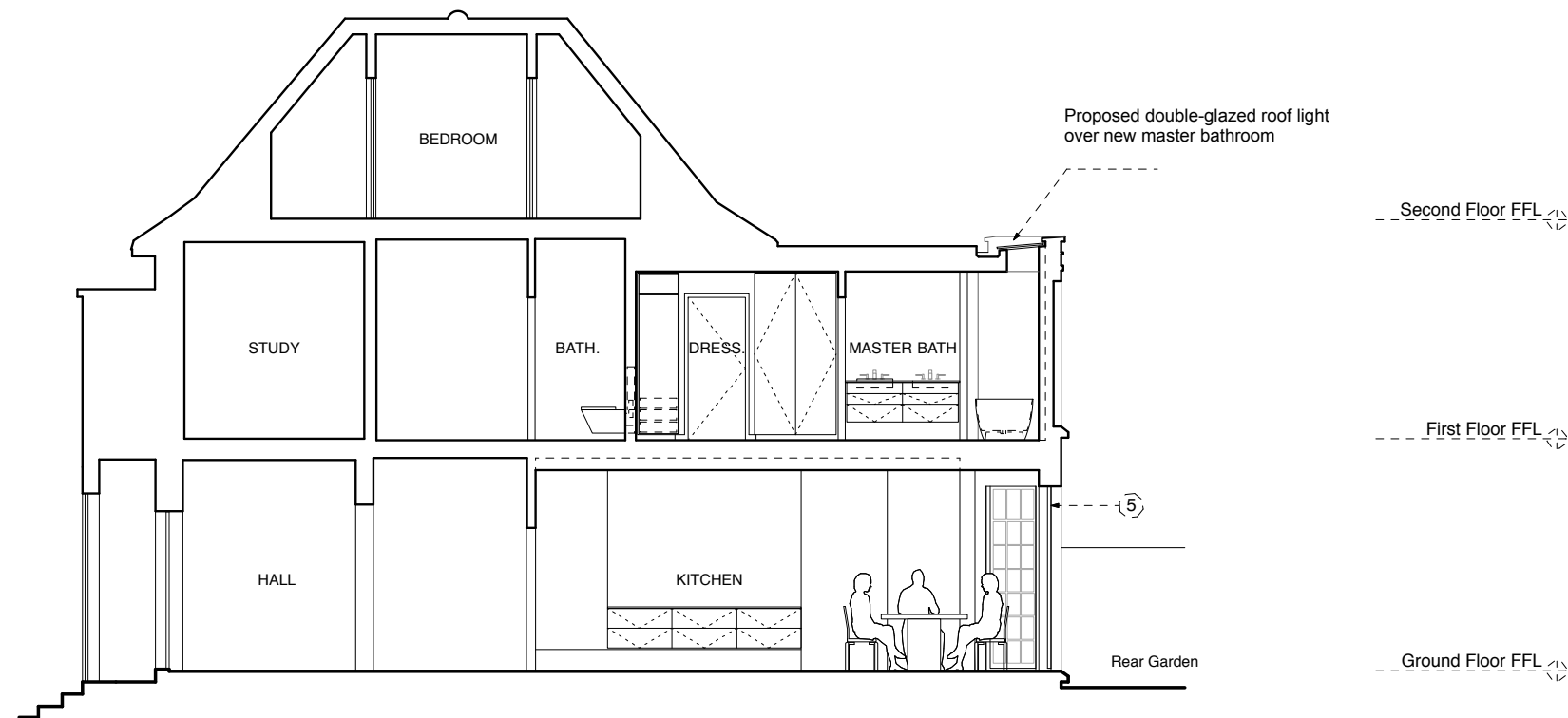
1. Concrete coping over raised parapet with projected tile course under to match detail of front elevation bay
2. Blank window in recessed brickwork to match ext. in Flemish bond
3. Cut corner bricks to match front elevation bay
4. New painted Crittall windows with heritage double-glazing to the existing bay openings proposed to be lowered as illustrated with brick cill detail to match ext.
5. New painted Crittall windows and doors to match existing and installed with heritage double-glazing



Section AA



Section BB

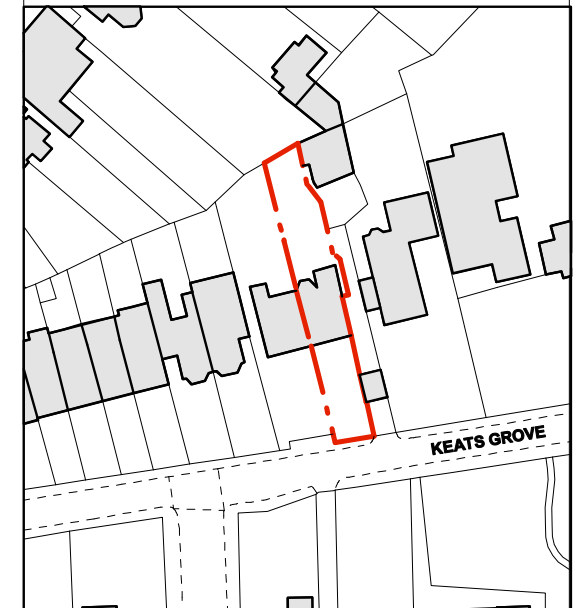


AS PROPOSED \_ Section AA & BB

**General Notes**  
 All dimensions to be verified on site  
 To be read in conjunction with all relevant documents  
 In the event of discrepancy notify the Architect immediately  
 This document is copyright of Hugh Cullum Architects Ltd

<b>Issue Status</b>	
SK	Sketch
D	Design
T	Tender
E	Existing Condition
P	Permissions
C	Contract

--- Site Boundary line



(A): Revised blank window proportions (04.05.16/OA)  
 ( ): Issued for Planning Application (24.02.16/GW)  
 Revision: Information (date/drawn by/checked by)

**HUGH CULLUM ARCHITECTS LTD**  
 Bloomsbury Design  
 61b Judd Street  
 London WC1H 9QT  
 t 020 7383 7647  
 f 020 7387 7645  
 mail@hughcullum.com

**15 Keats Grove**  
 Proposed  
 Sections AA & BB  
 1:100@A3 February 2016  
**KG015-P107(A)**