

GREATER LONDON HOUSE

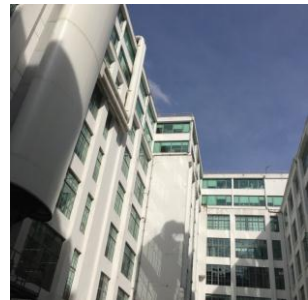
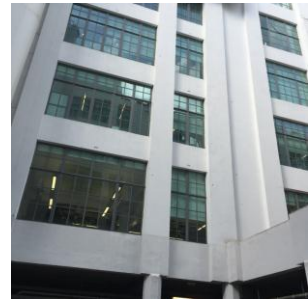
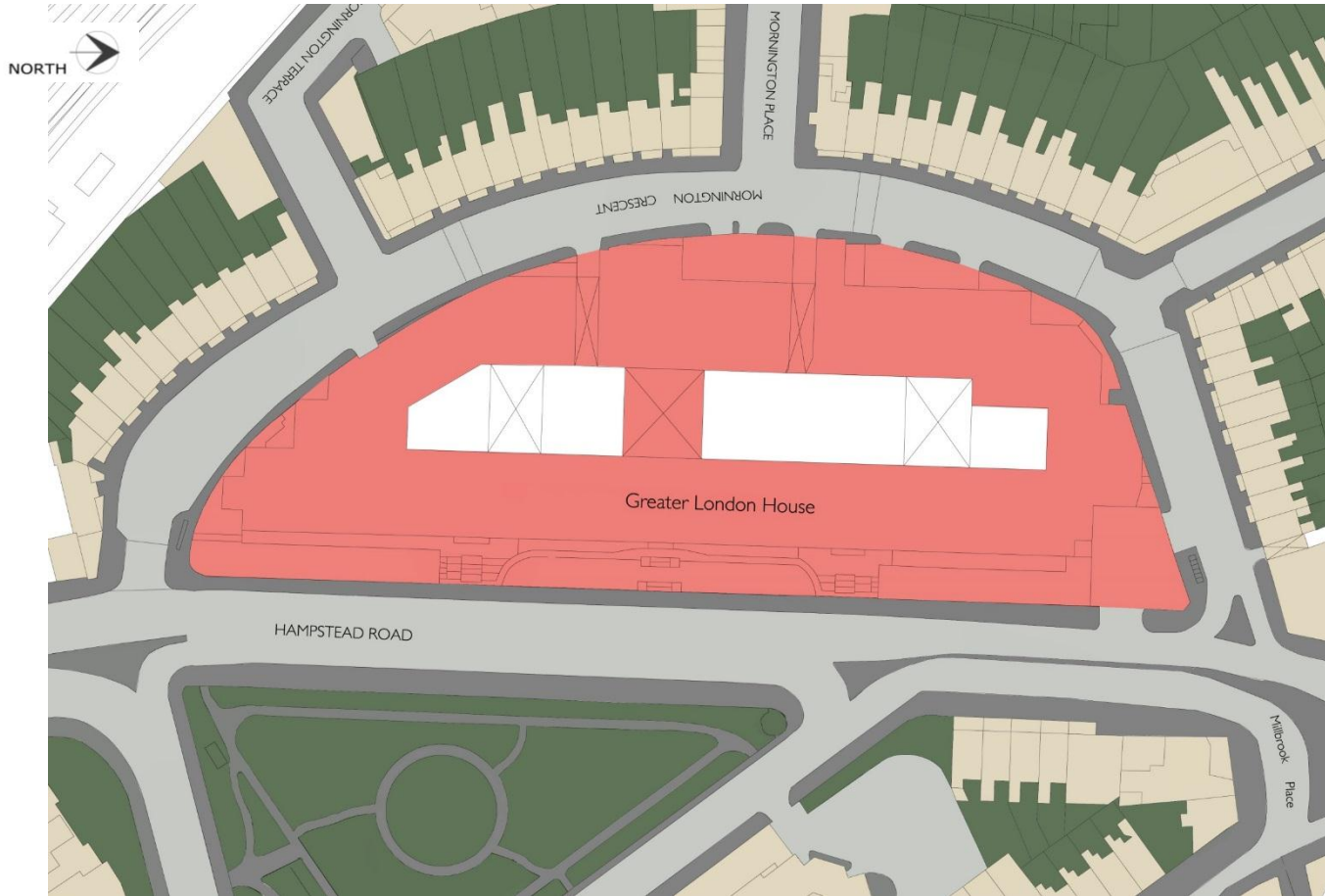
PROJECT
REPORT
CLIENT
TENANT

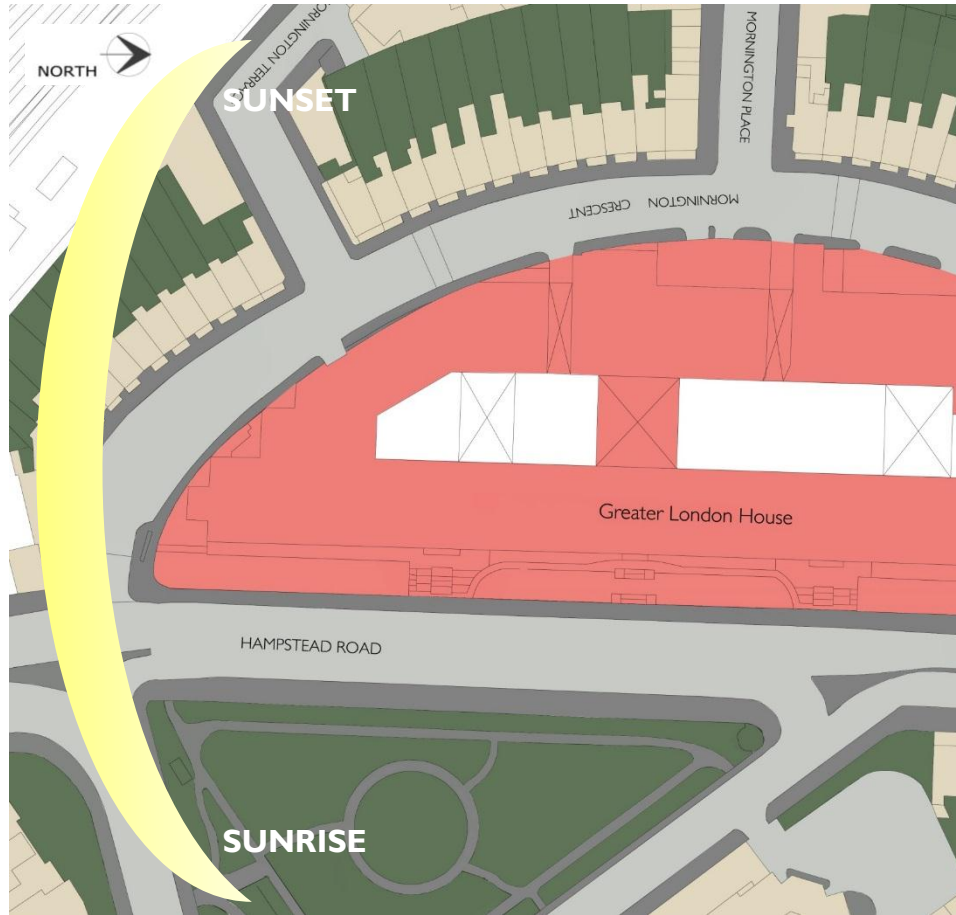
GREATER LONDON HOUSE
CONCEPT DESIGN PRESENTATION
LAZARI INVESTMENTS
ASOS

forms
ARCHITECTURE

glp

THE MORTON PARTNERSHIP LTD





- NEW FLOOR SPACE
- EXISTING FLOOR SPACE
- CIRCULATION

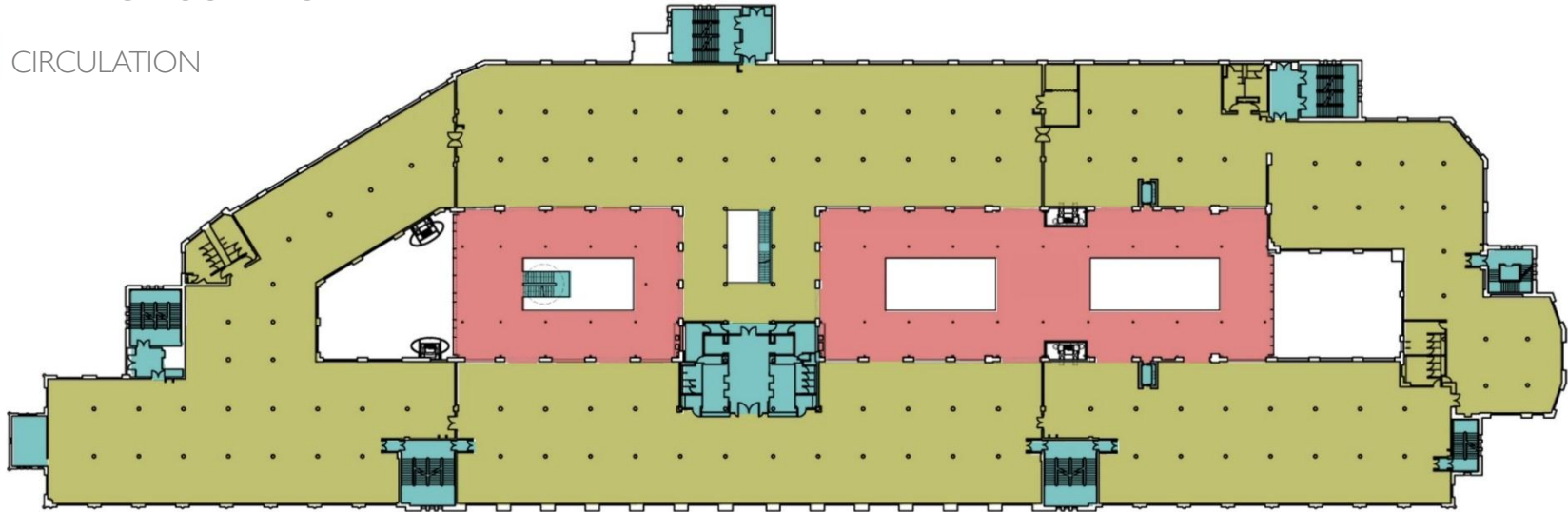


TOTAL NEW GROUND FLOOR AREA

GIA 1327 SQ M / 14278 SQ FT

NIA 1297 SQ M / 13956 SQ FT

- NEW FLOOR SPACE
- EXISTING FLOOR SPACE
- CIRCULATION

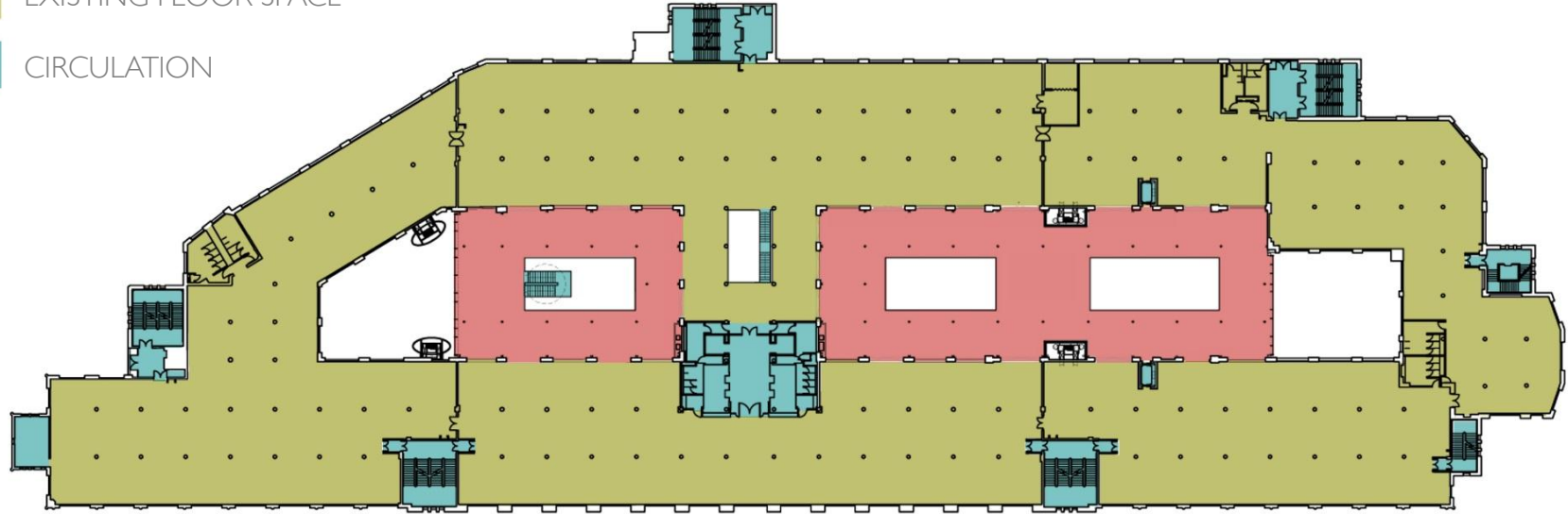


TOTAL NEW FIRST FLOOR AREA

GIA 1327 SQ M / 14278 SQ FT

NIA 1074 SQ M / 11556 SQ FT

- NEW FLOOR SPACE
- EXISTING FLOOR SPACE
- CIRCULATION



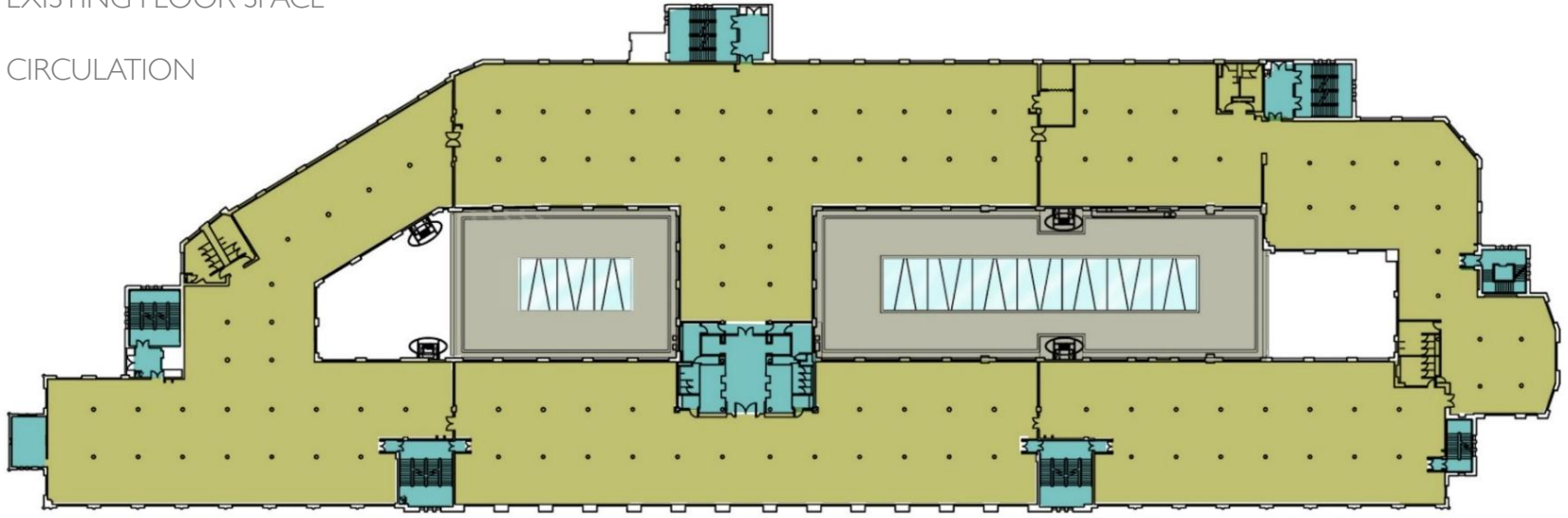
TOTAL NEW SECOND FLOOR AREA

GIA 1327 SQ M / 14278 SQ FT

NIA 1074 SQ M / 11556 SQ FT



EXISTING FLOOR SPACE
CIRCULATION



TOTAL NEW FLOOR AREA

GIA 3981 SQ M / 42834 SQ FT

NIA 3445 SQ M / 37068 SQ FT



DAYTIME



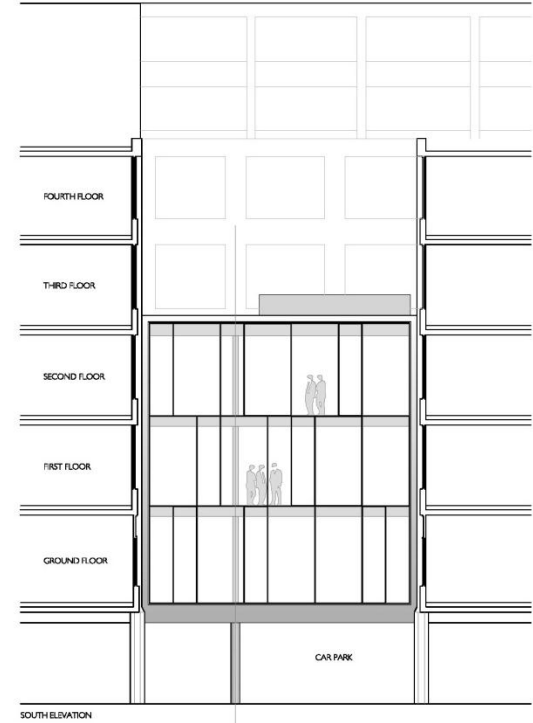
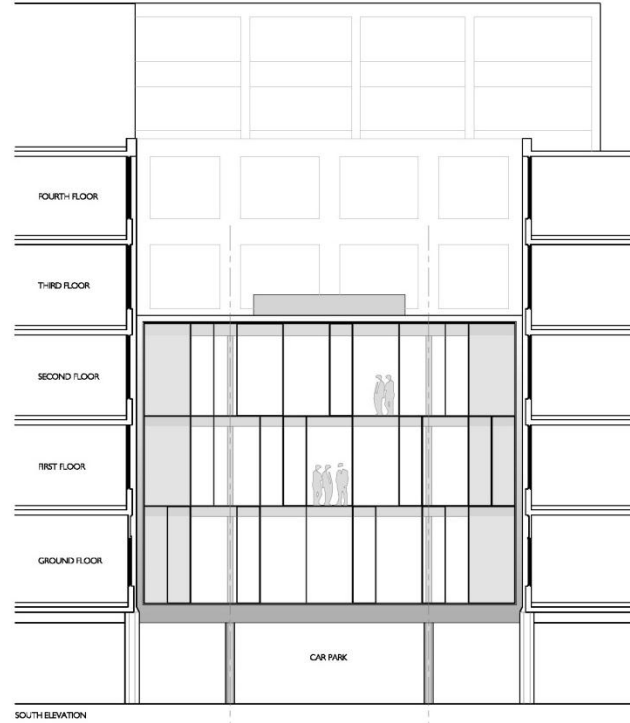
NIGHTTIME

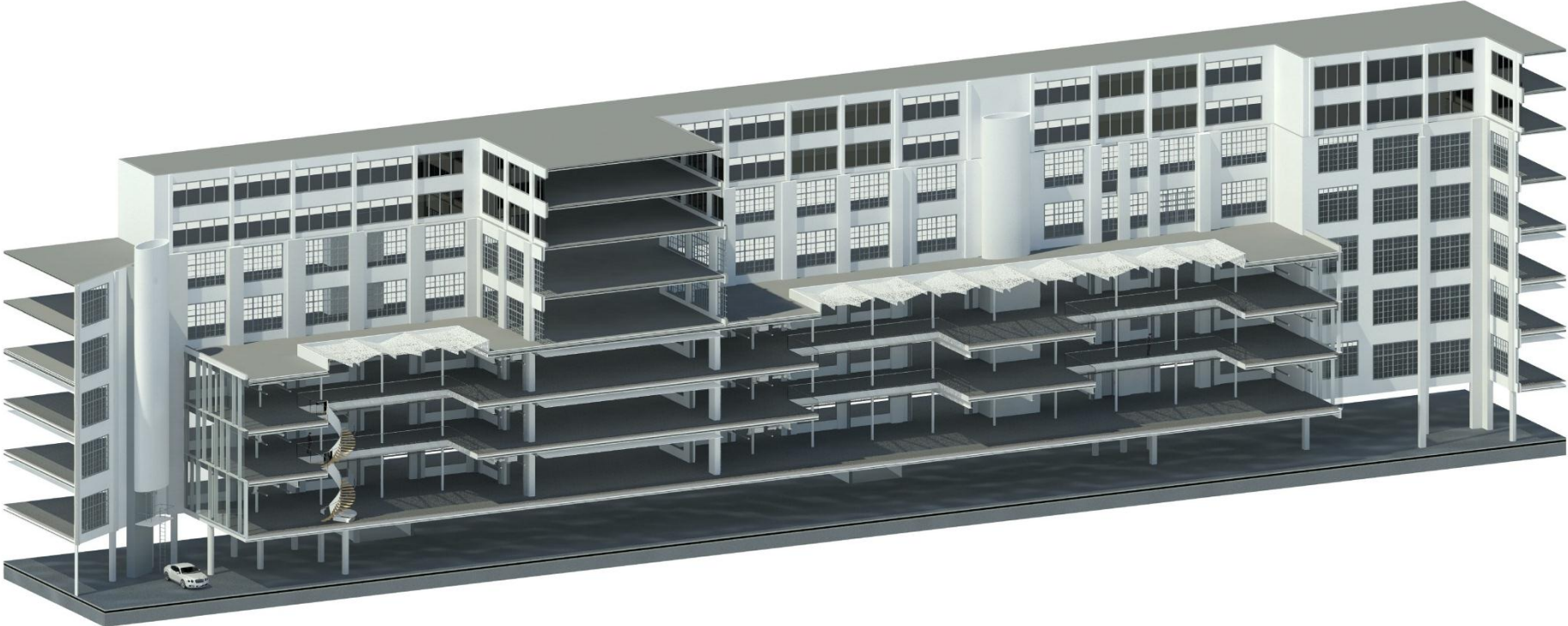


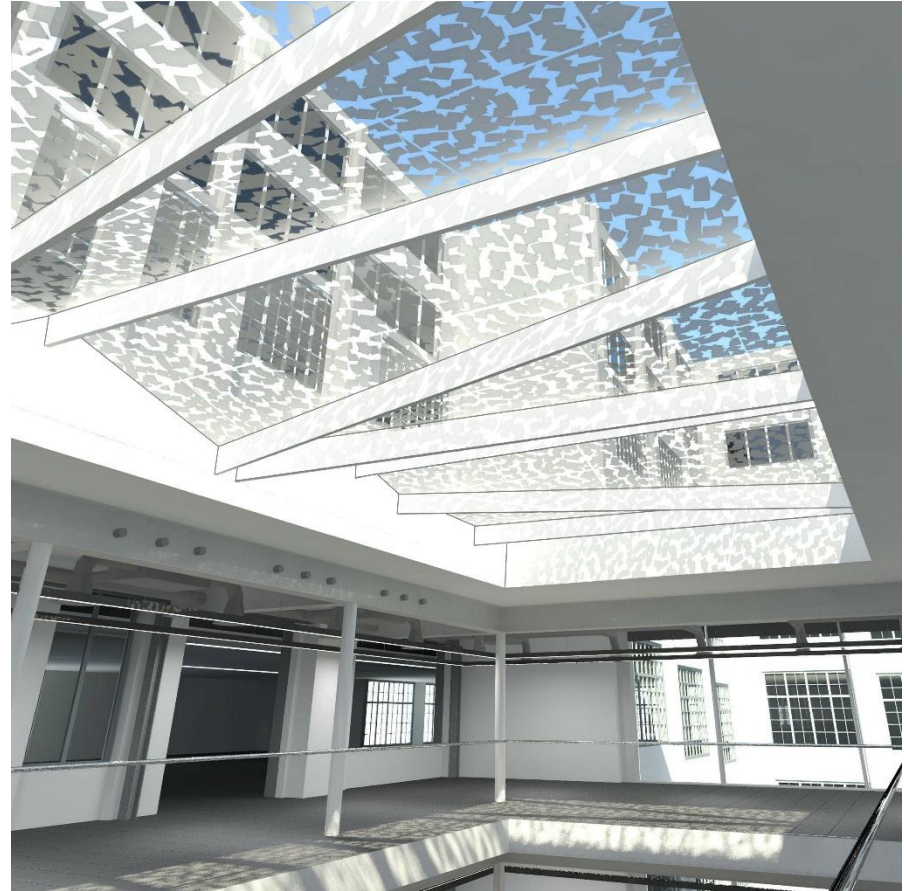
DAYTIME

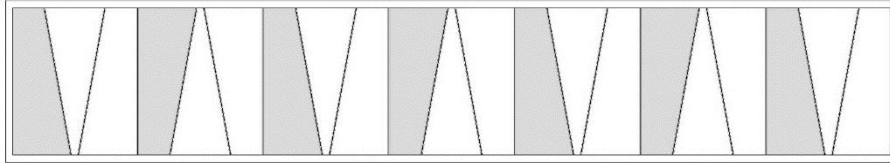
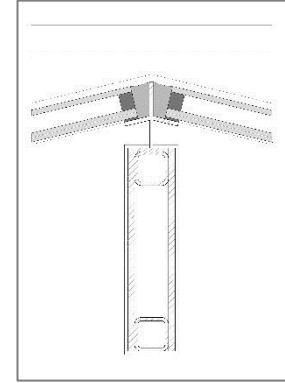
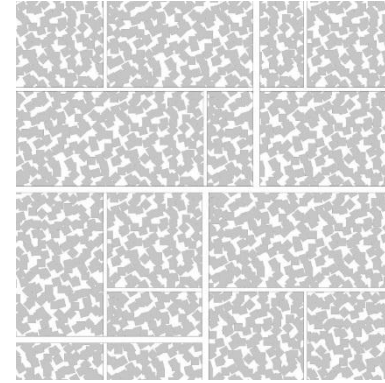


NIGHTTIME

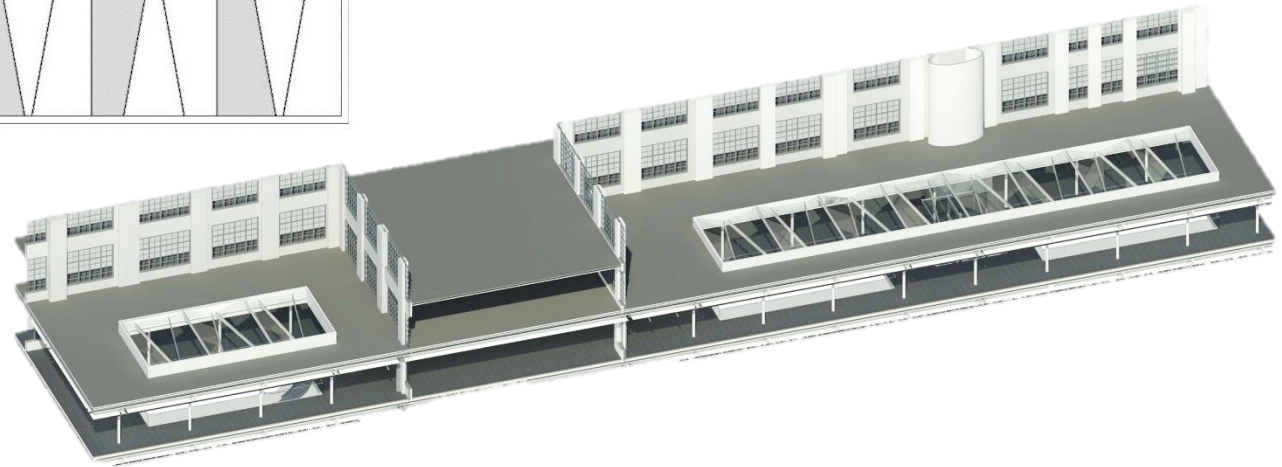


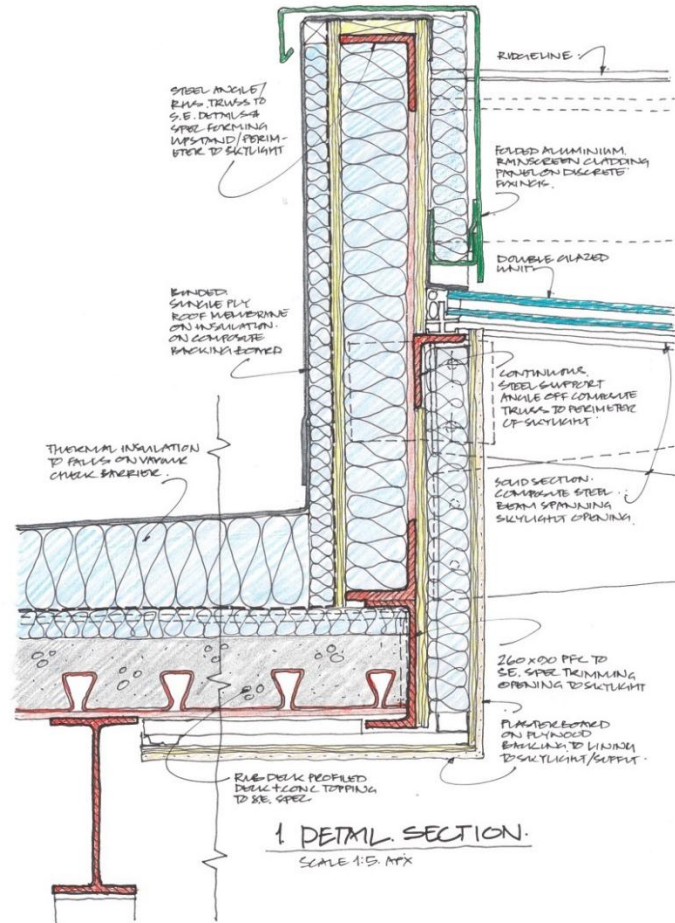


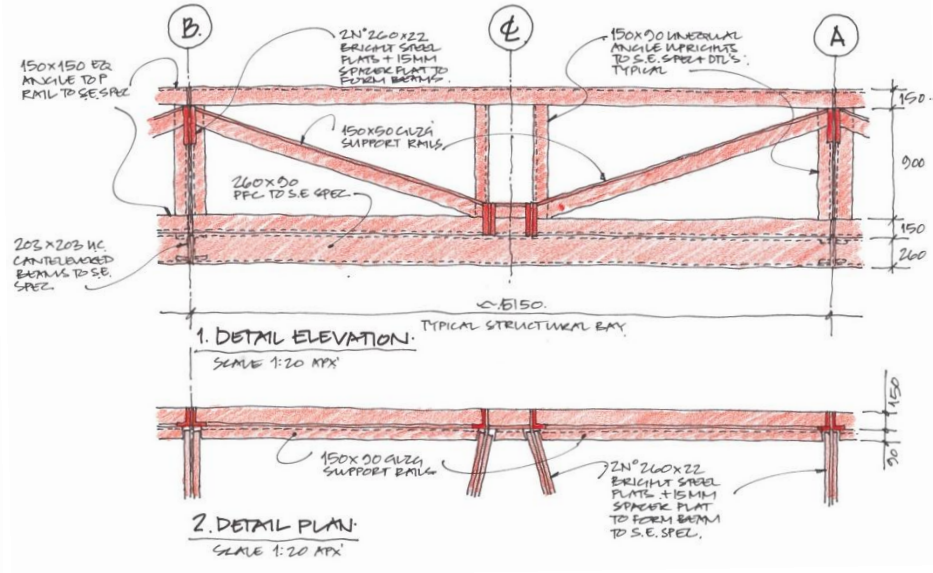
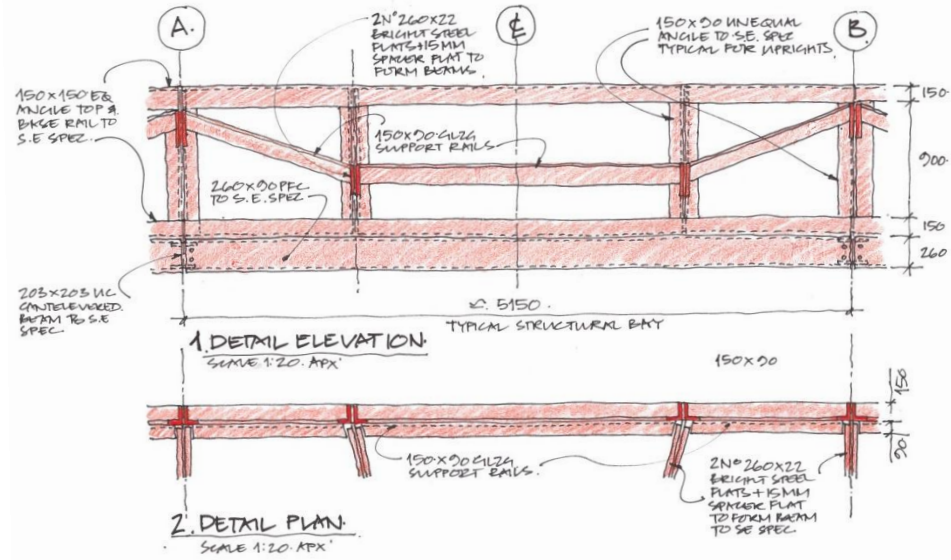




SKYLIGHT PLAN





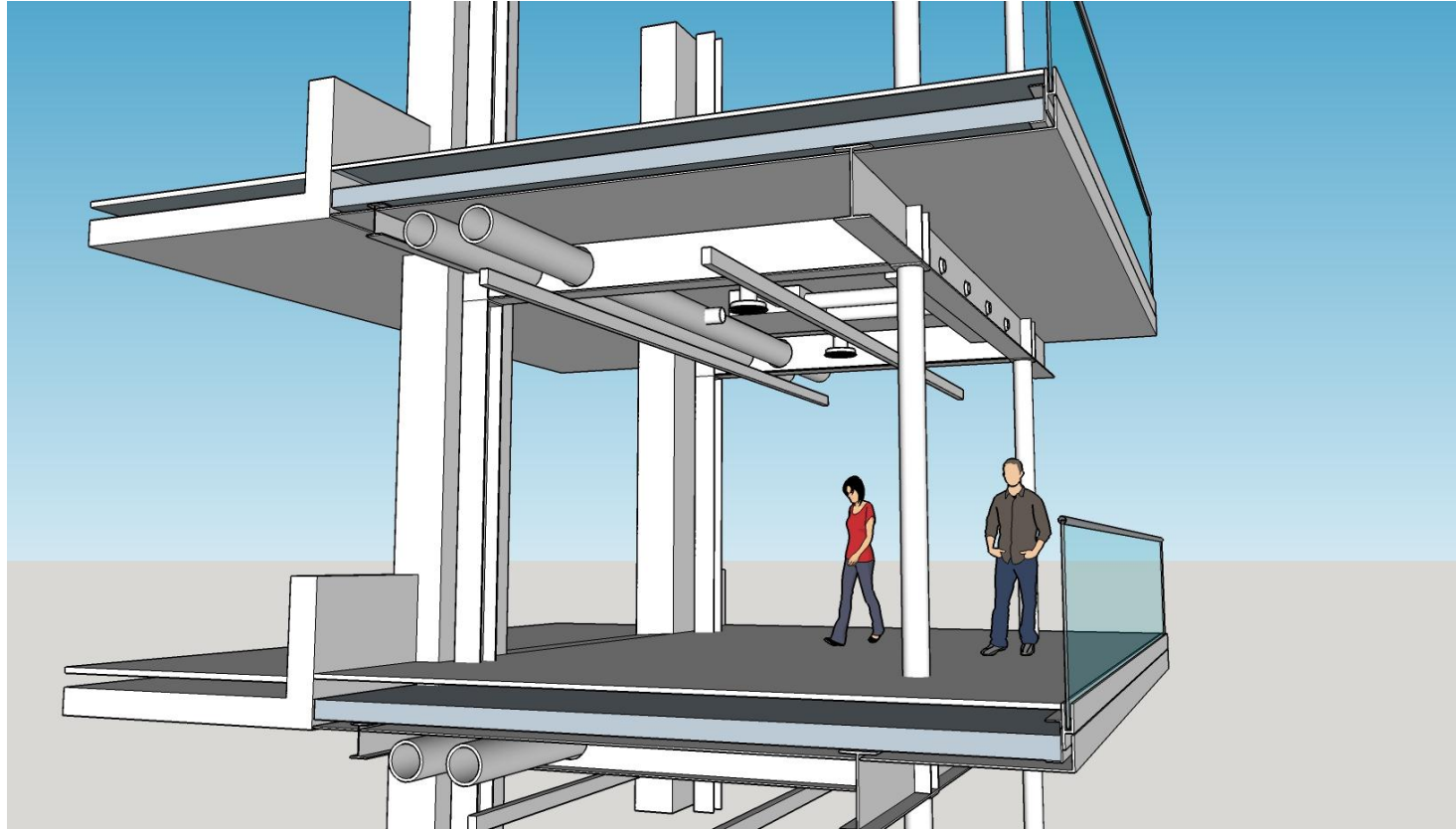


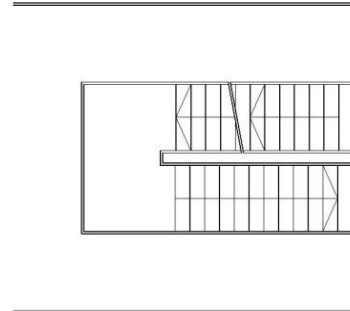
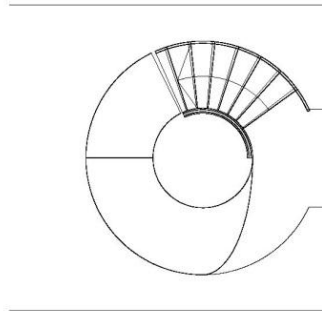
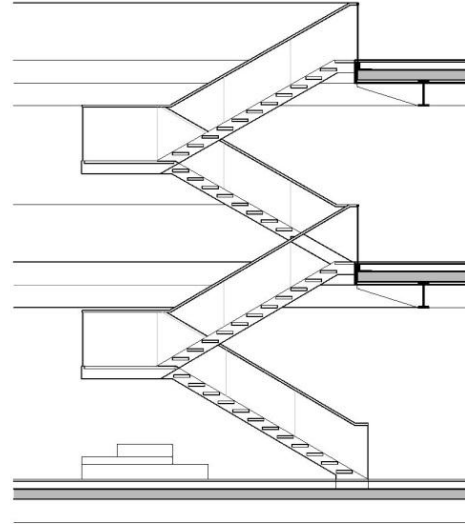
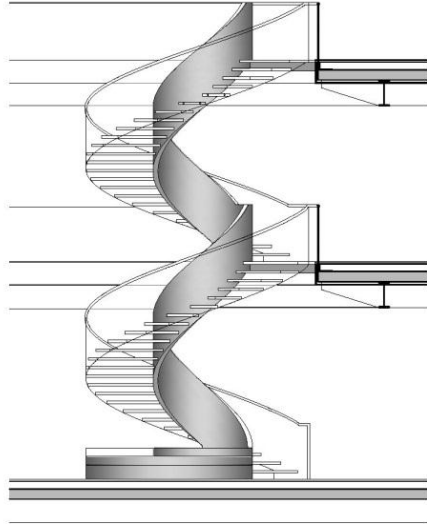




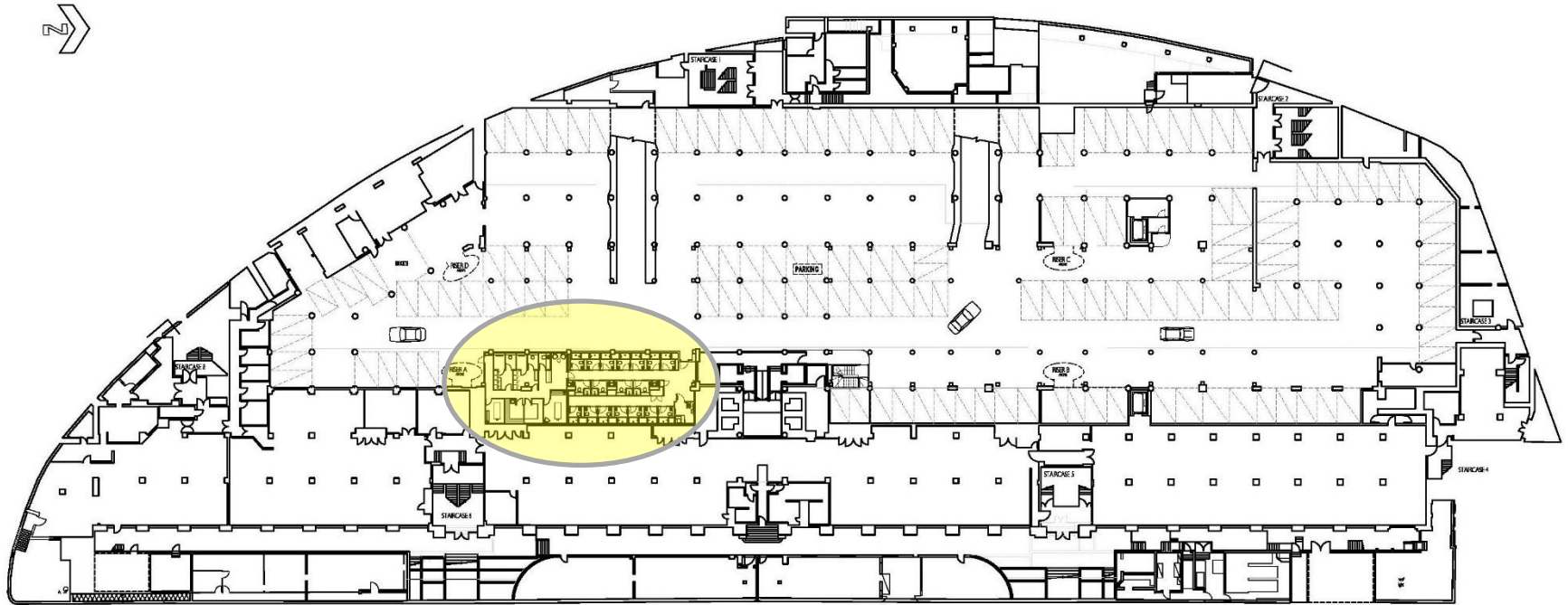


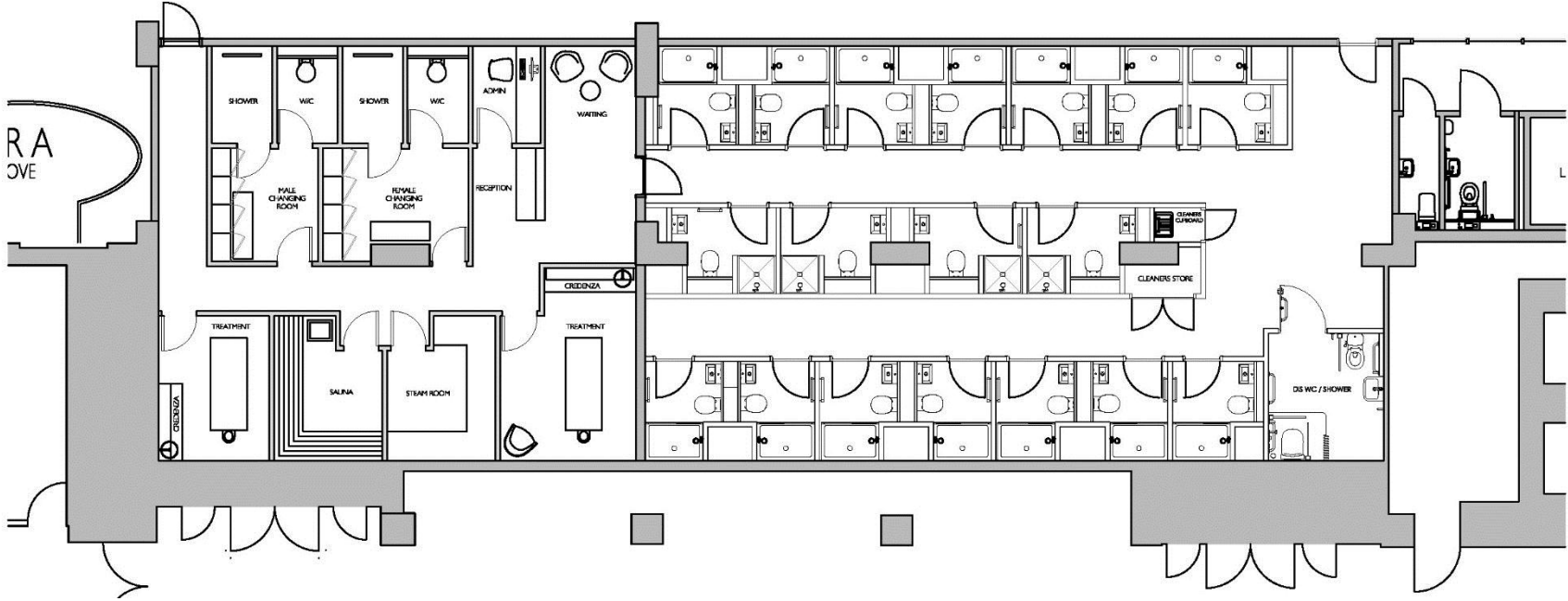


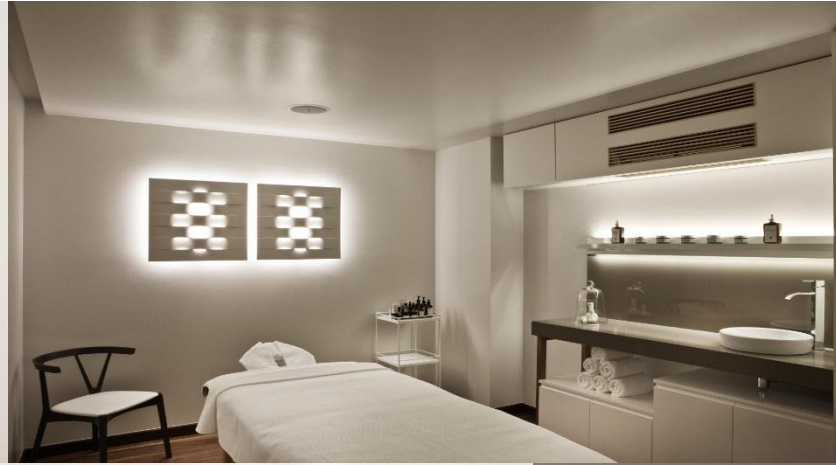


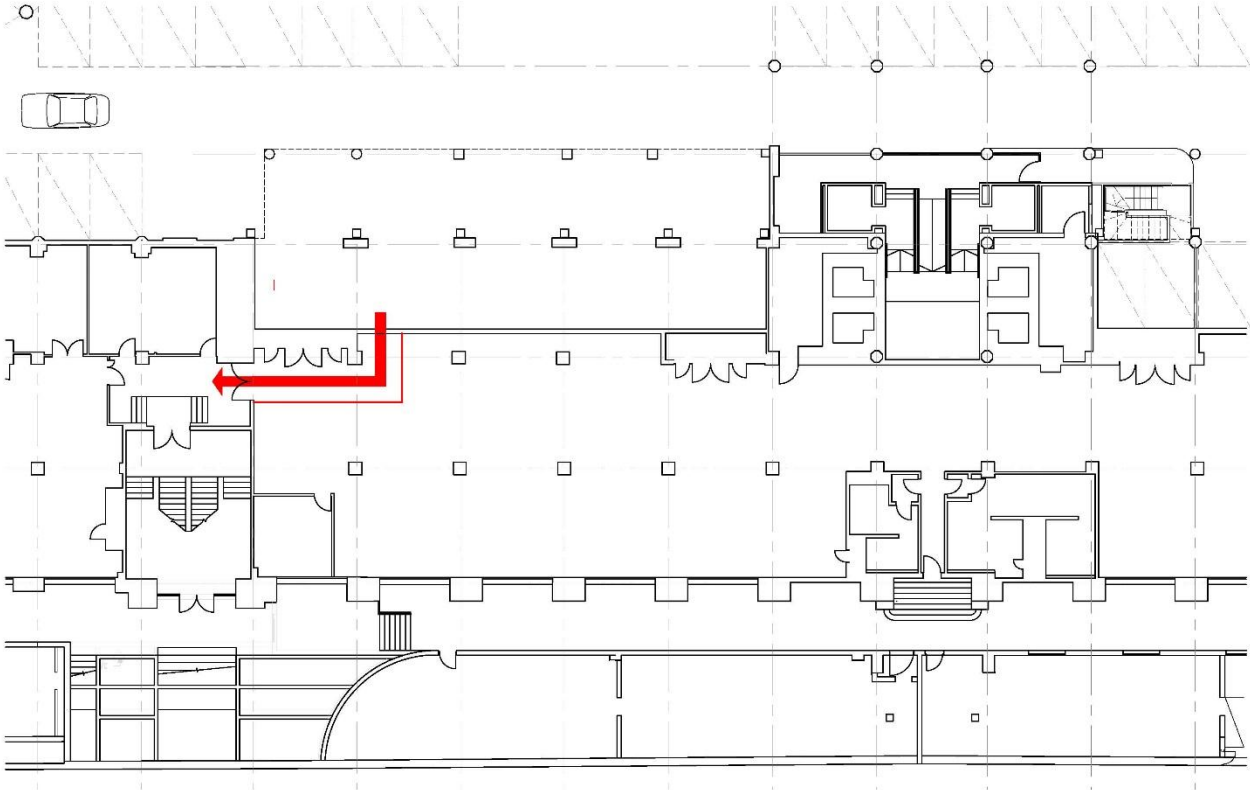


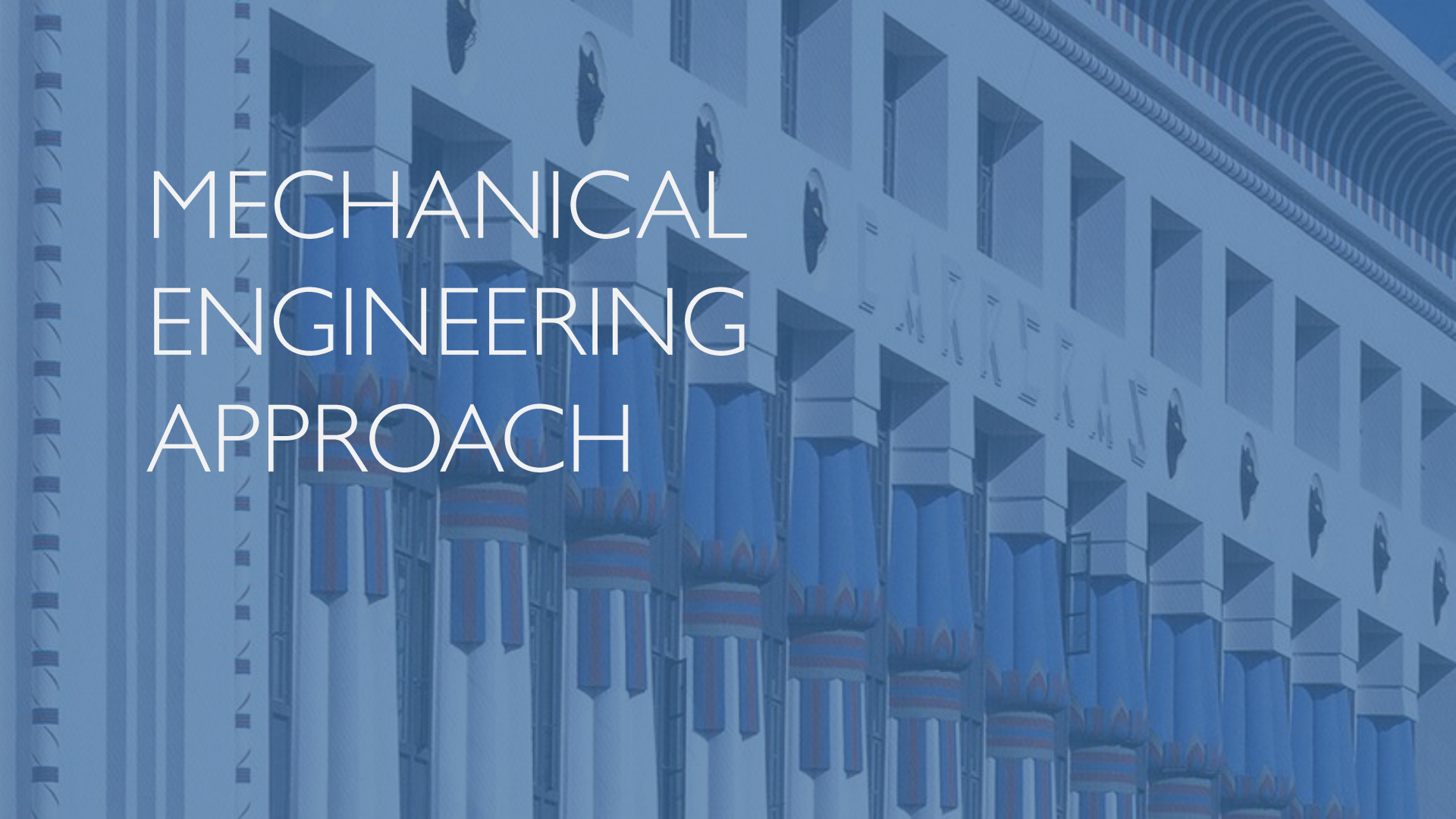




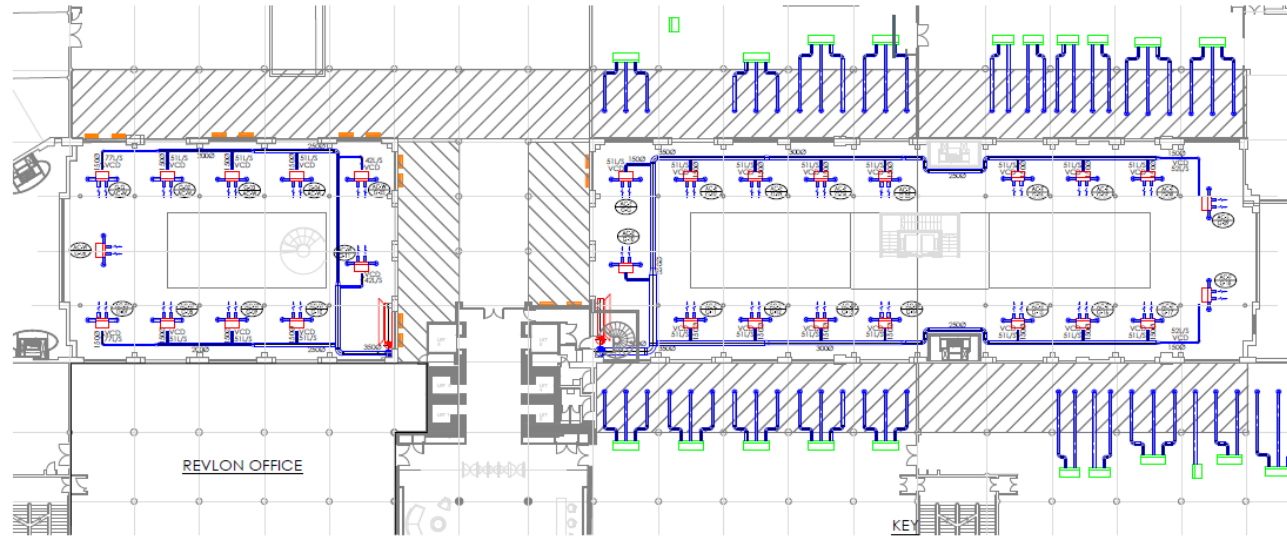




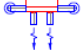
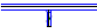





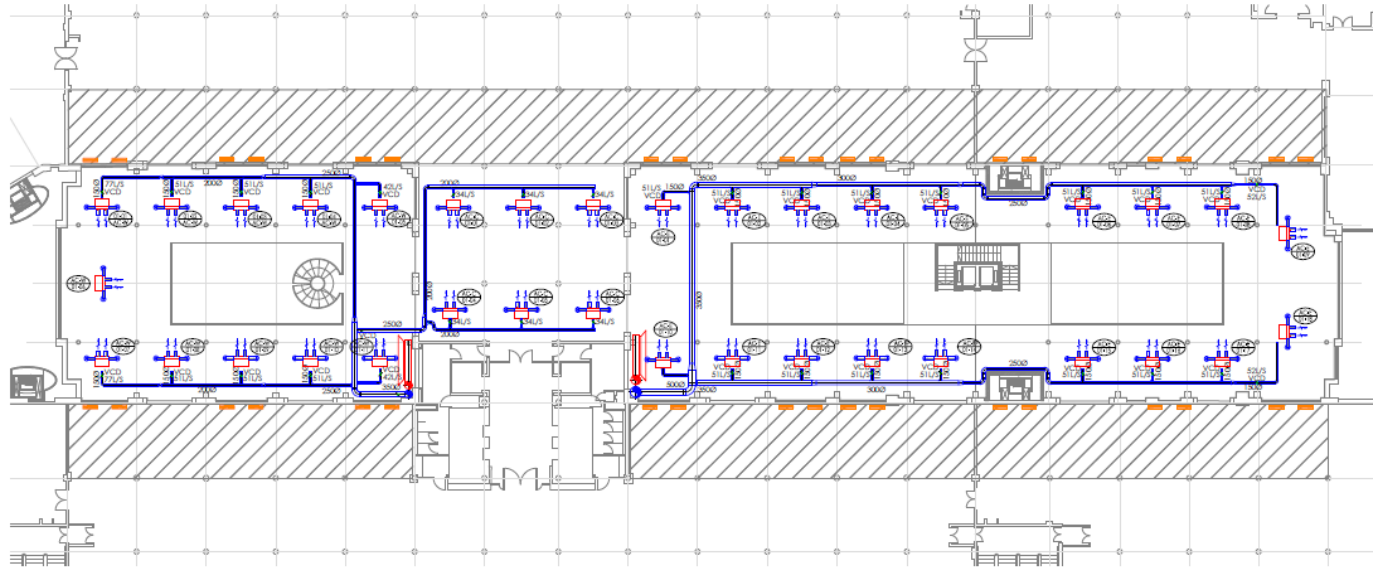
The background is a blue-tinted architectural rendering of a classical building facade. It features a series of columns with decorative capitals, arches, and a grid of windows. The overall style is clean and modern, with a focus on geometric forms and perspective.

MECHANICAL ENGINEERING APPROACH



GROUND FLOOR AIR CONDITIONING AND VENTILATION LAYOUT

- 
 IN-VOID AC UNIT FOR HEATING & COOLING
- 
 FRESH AIR VENTILATION DUCTWORK
- 
 EXISTING HIGH LEVEL FAN COIL UNITS
- 
 FAN COIL UNITS IN HATCHED AREA TO BE REPLACED UNDER SEPARATE CONTRACT
- 
 PERIMETER FAN COIL UNITS

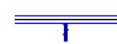


FIRST FLOOR AIR CONDITIONING AND VENTILATION LAYOUT

KEY - NEW HVAC SERVICES



IN-VOID AC UNIT FOR HEATING & COOLING



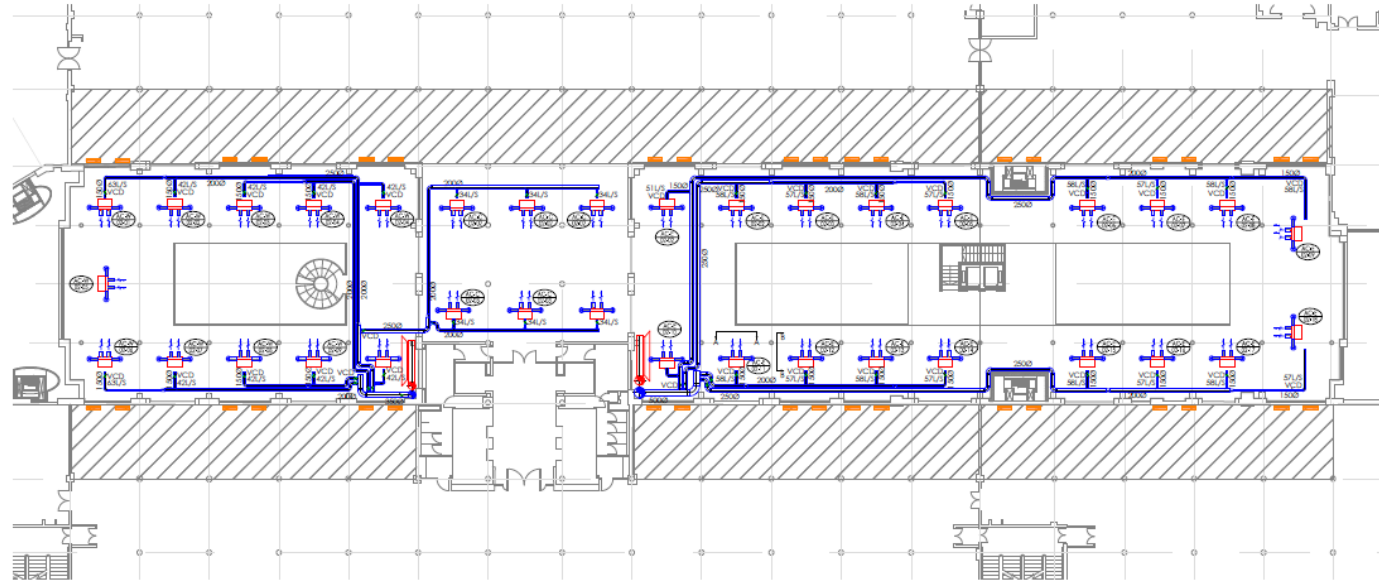
FRESH AIR VENTILATION DUCTWORK



FAN COIL UNITS IN HATCHED AREA TO BE REPLACED UNDER SEPARATE CONTRACT



PERIMETER FAN COIL UNITS



KEY - NEW HVAC SERVICES



IN-VOID AC UNIT FOR HEATING & COOLING



FRESH AIR VENTILATION DUCTWORK

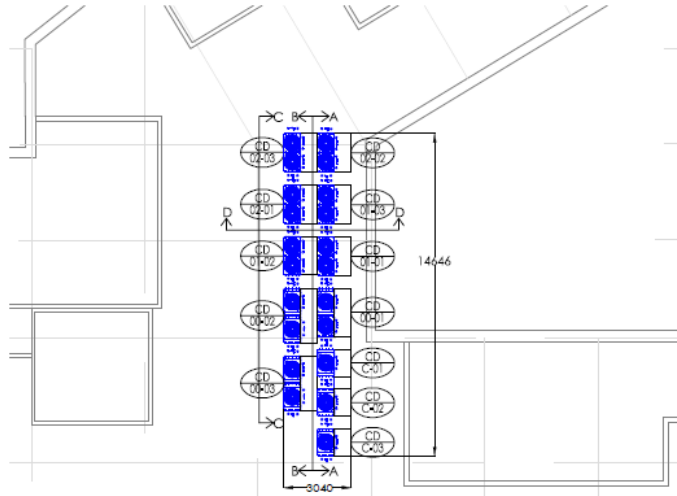


FAN COIL UNITS IN HATCHED AREA TO BE REPLACED UNDER SEPARATE CONTRACT

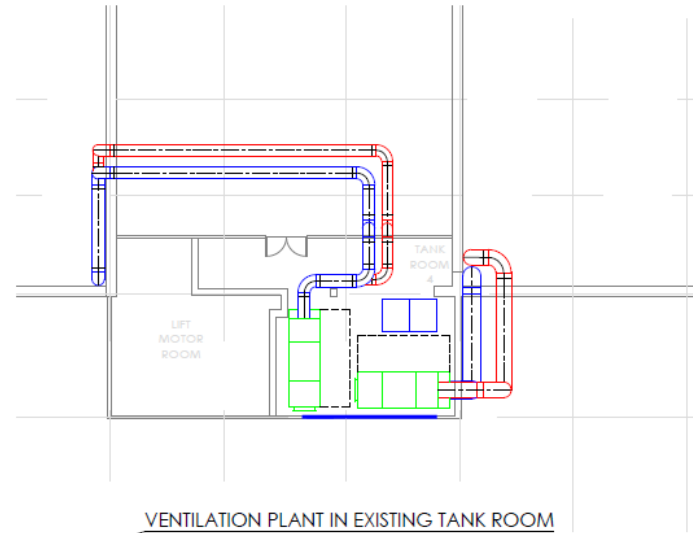


PERIMETER FAN COIL UNITS

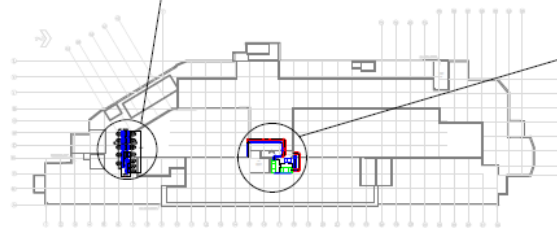
SECOND FLOOR AIR CONDITIONING AND VENTILATION LAYOUT



VRF CONDENSERS ON HIDDEN ROOF SECTION

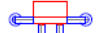



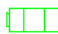



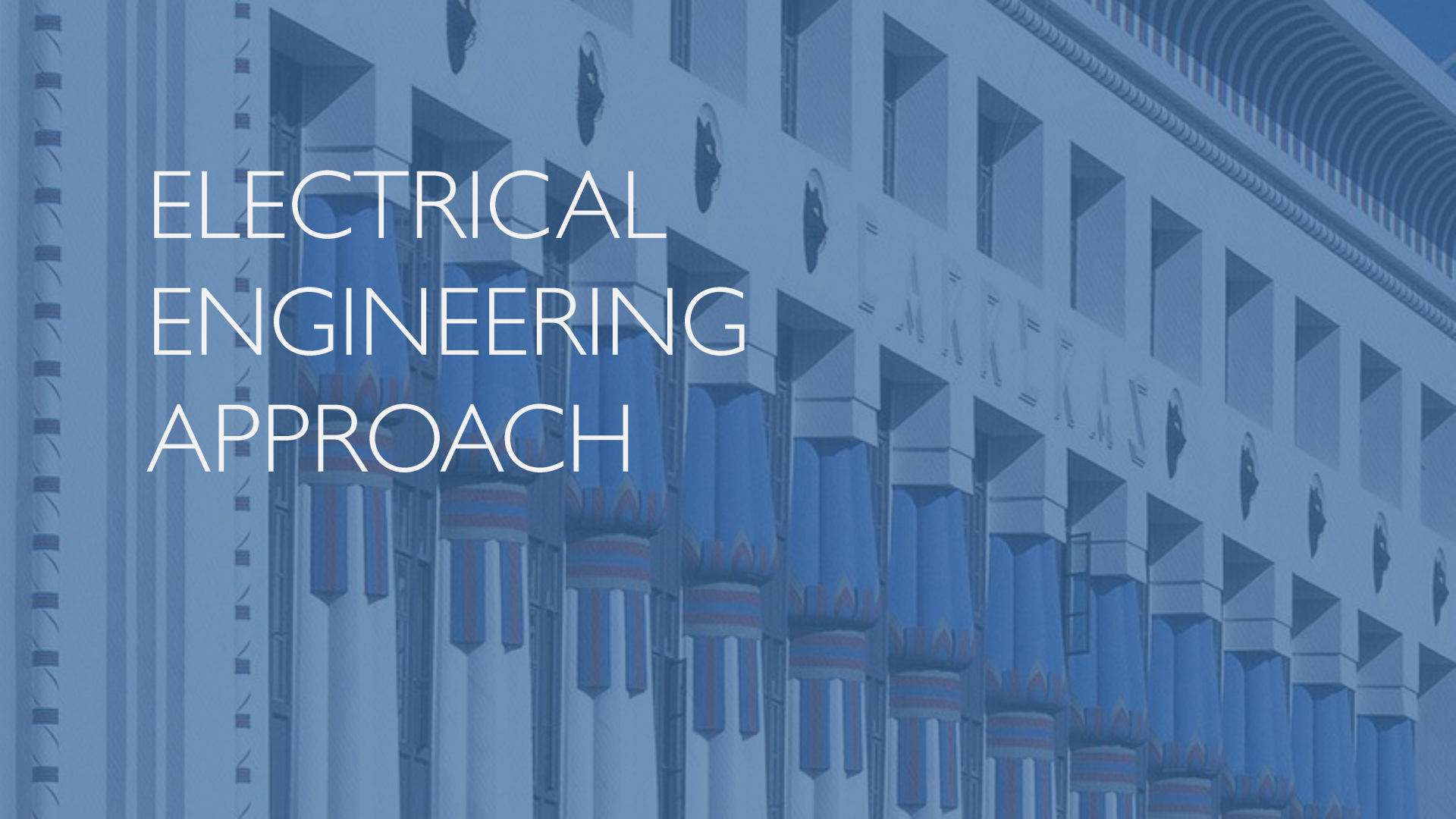
VENTILATION PLANT IN EXISTING TANK ROOM



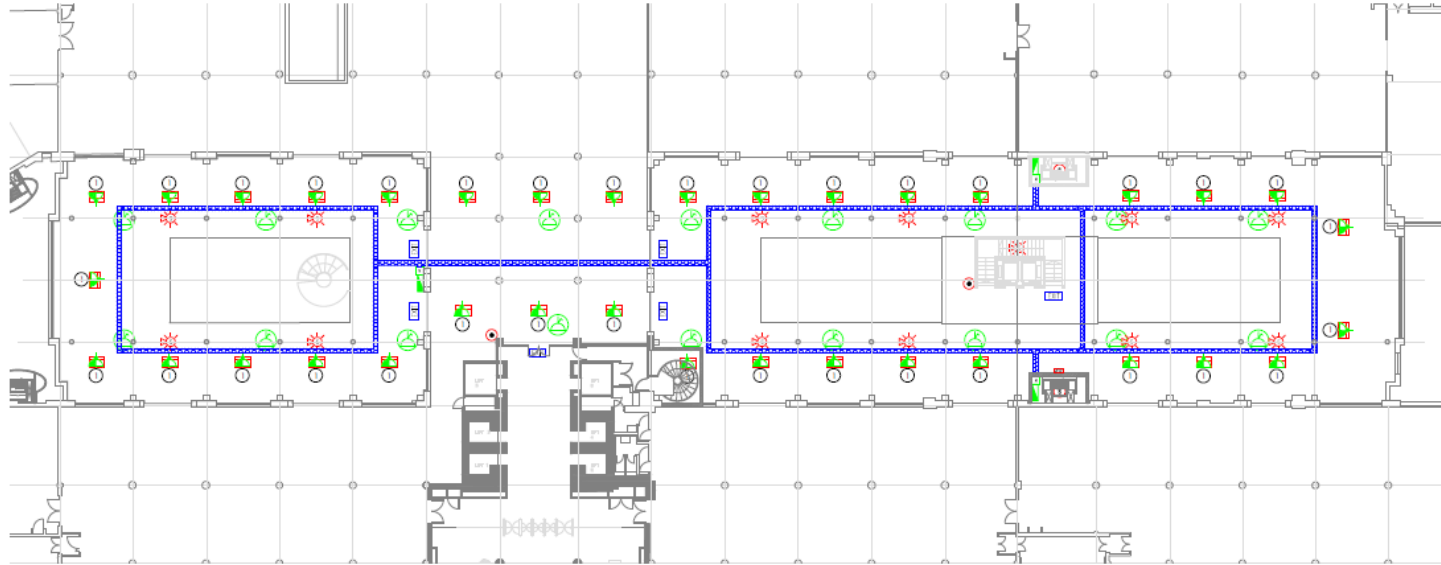
GLH ROOF LAYOUT

ROOF LEVEL AIR CONDITIONING AND VENTILATION LAYOUT











- KEY**
-  IN-VOID AC UNIT FOR HEATING & COOLING
 -  FRESH AIR VENTILATION DUCTWORK
 -  EXTRACT AIR VENTILATION DUCTWORK
 -  CONDENSERS
 -  AIR HANDLING UNIT
 -  LOUVRE

The background is a blue-tinted architectural rendering of a classical building facade. It features a series of columns with decorative capitals, arches, and a grid of windows. The overall style is clean and modern, with a focus on geometric forms and perspective.

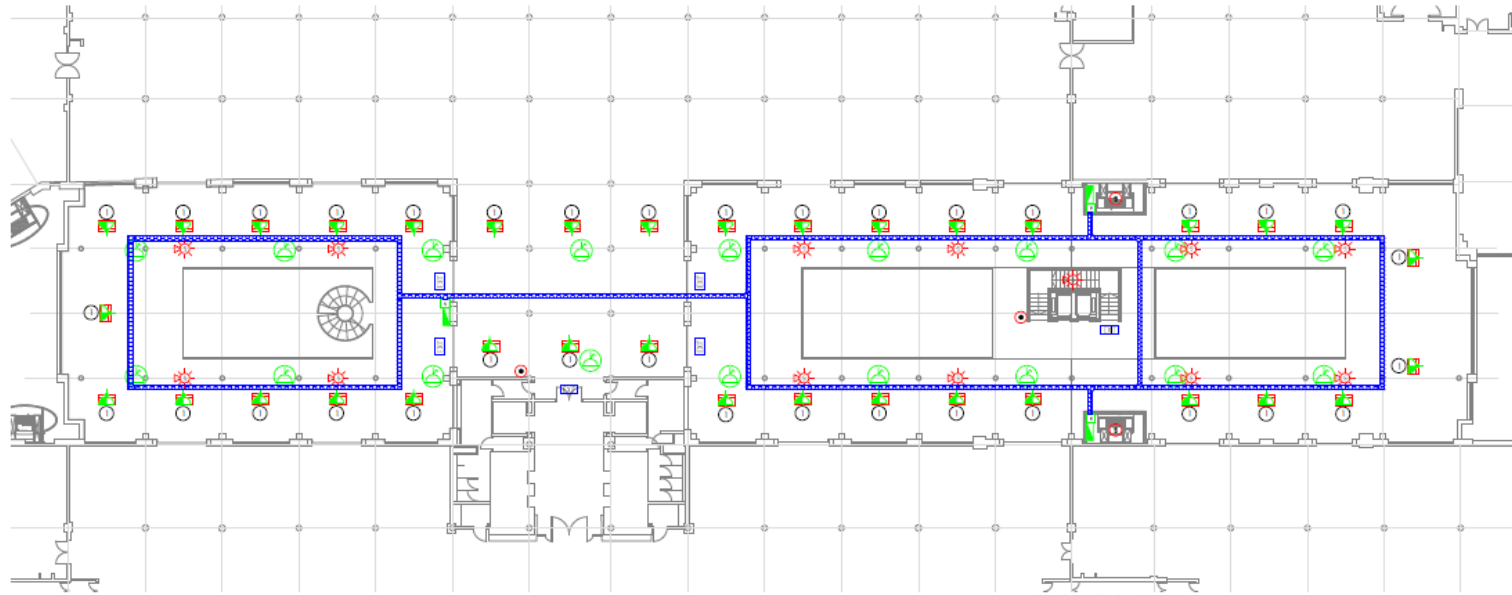
ELECTRICAL ENGINEERING APPROACH













KEY - NEW ELECTRICAL SERVICES

-  12 WAY TPN DISTRIBUTION BOARD SPLIT TYPE METERED FOR LIGHTING & POWER
-  METER
-  SWITCHED FUSED SPUR AT HIGH LEVEL FOR FCU
-  CLEANERS SOCKET DISO IN GROMET EVERY 10-15 METERS IN RAISED FLOOR
-  300MM CABLE TRAY C/W DIVIDER FOR ELV/LV CABLING
-  EXIT SIGN
-  MANUAL CALL POINT
-  SMOKE DETECTOR C/W SOUNDER BEACON
-  MAIN FIRE ALARM PANEL
-  SMOKE DETECTOR

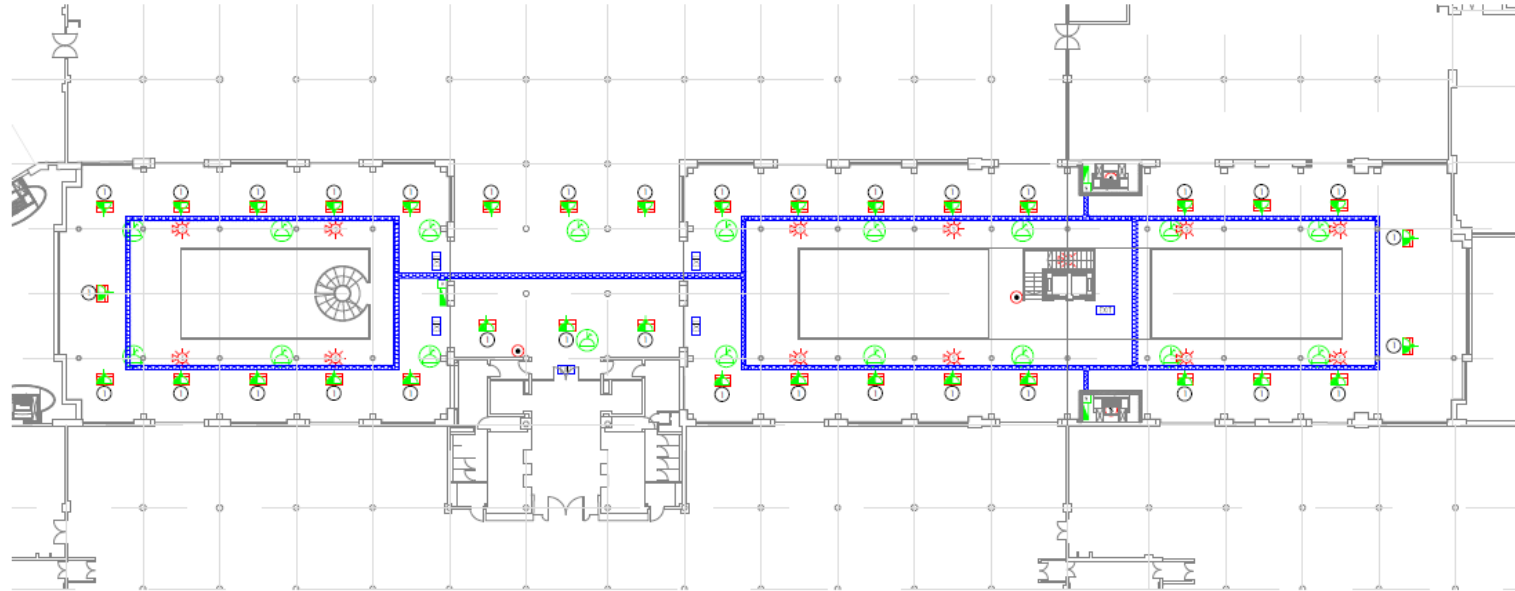
GROUND FLOOR ELECTRICAL SERVICES LAYOUT













KEY - NEW ELECTRICAL SERVICES

-  12 WAY 1PN DISTRIBUTION BOARD SPLIT TYPE METERED FOR LIGHTING & POWER
-  METER
-  SWITCHED FUSED SPUR AT HIGH LEVEL FOR FCU
-  CLEANERS SOCKET DISO IN CROMET EVERY 10-15 METERS IN RAISED FLOOR
-  30MM CABLE TRAY C/W DIVIDER FOR ELV/LV CABLING
-  EXIT SIGN
-  MANUAL CALL POINT
-  SMOKE DETECTOR C/W SOUNDER BEACON
-  MAIN FIRE ALARM PANEL
-  SMOKE DETECTOR

FIRST FLOOR ELECTRICAL SERVICES LAYOUT



KEY - NEW ELECTRICAL SERVICES

-  12 WAY TPN DISTRIBUTION BOARD SPLIT TYPE METERED FOR LIGHTING & POWER
-  METER
-  SWITCHED FUSED SPUR AT HIGH LEVEL FOR FCU
-  CLEANERS SOCKET DISO IN GROMET EVERY 10-15 METERS IN RAISED FLOOR
-  300MM CABLE TRAY C/W DIVIDER FOR ELV/LV CABLING
-  EXIT SIGN
-  MANUAL CALL POINT
-  SMOKE DETECTOR C/W SOUNDER BEACON
-  MAIN FIRE ALARM PANEL
-  SMOKE DETECTOR

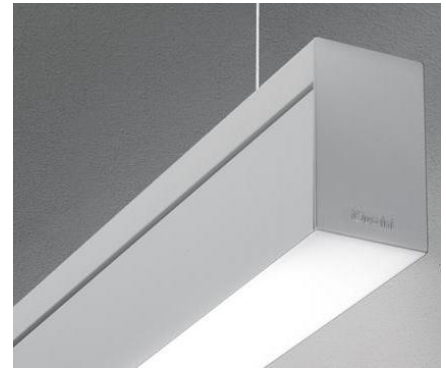
SECOND FLOOR ELECTRICAL SERVICES LAYOUT



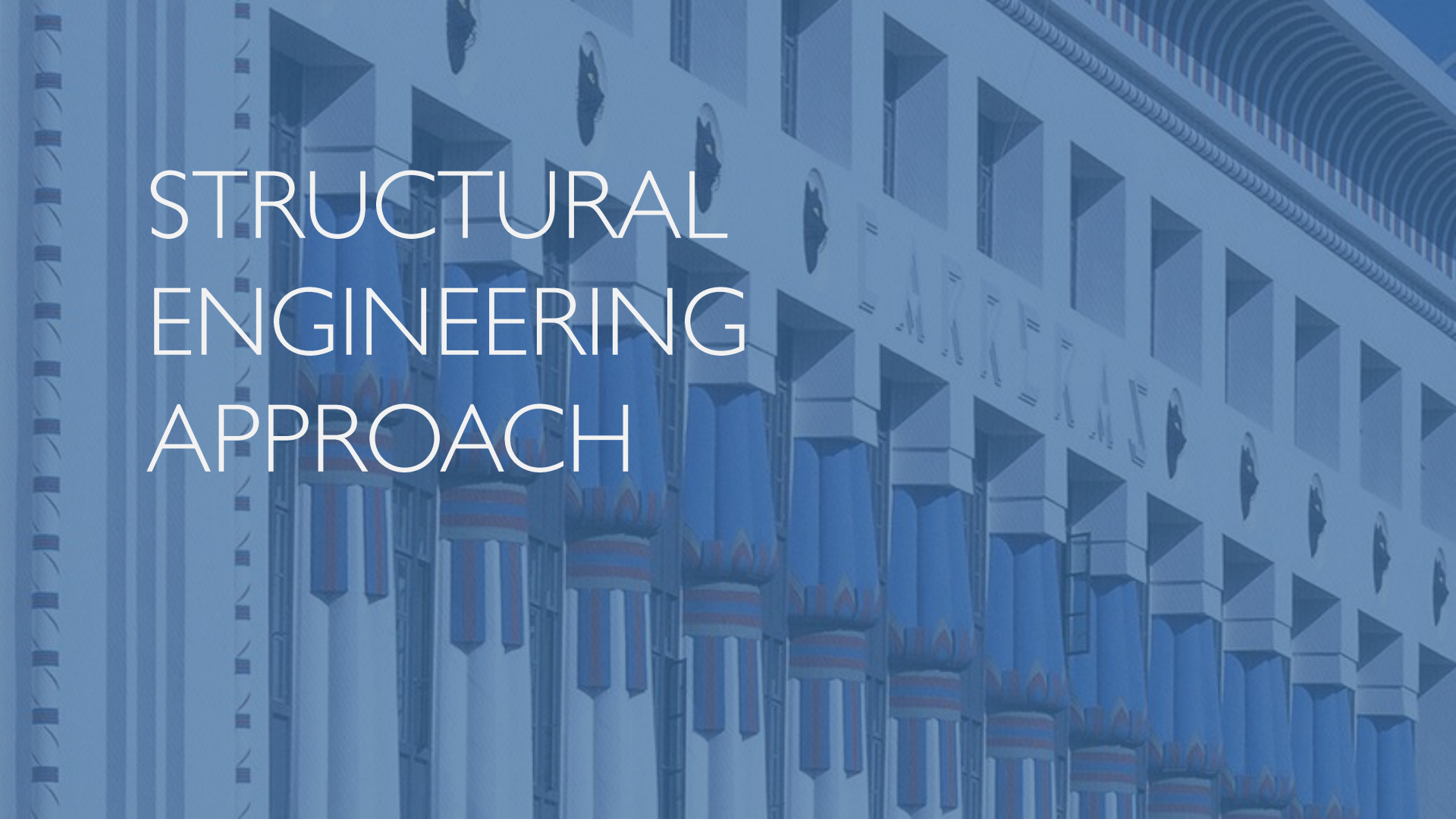
FLOS – INFINITY 70 UP & DOWN



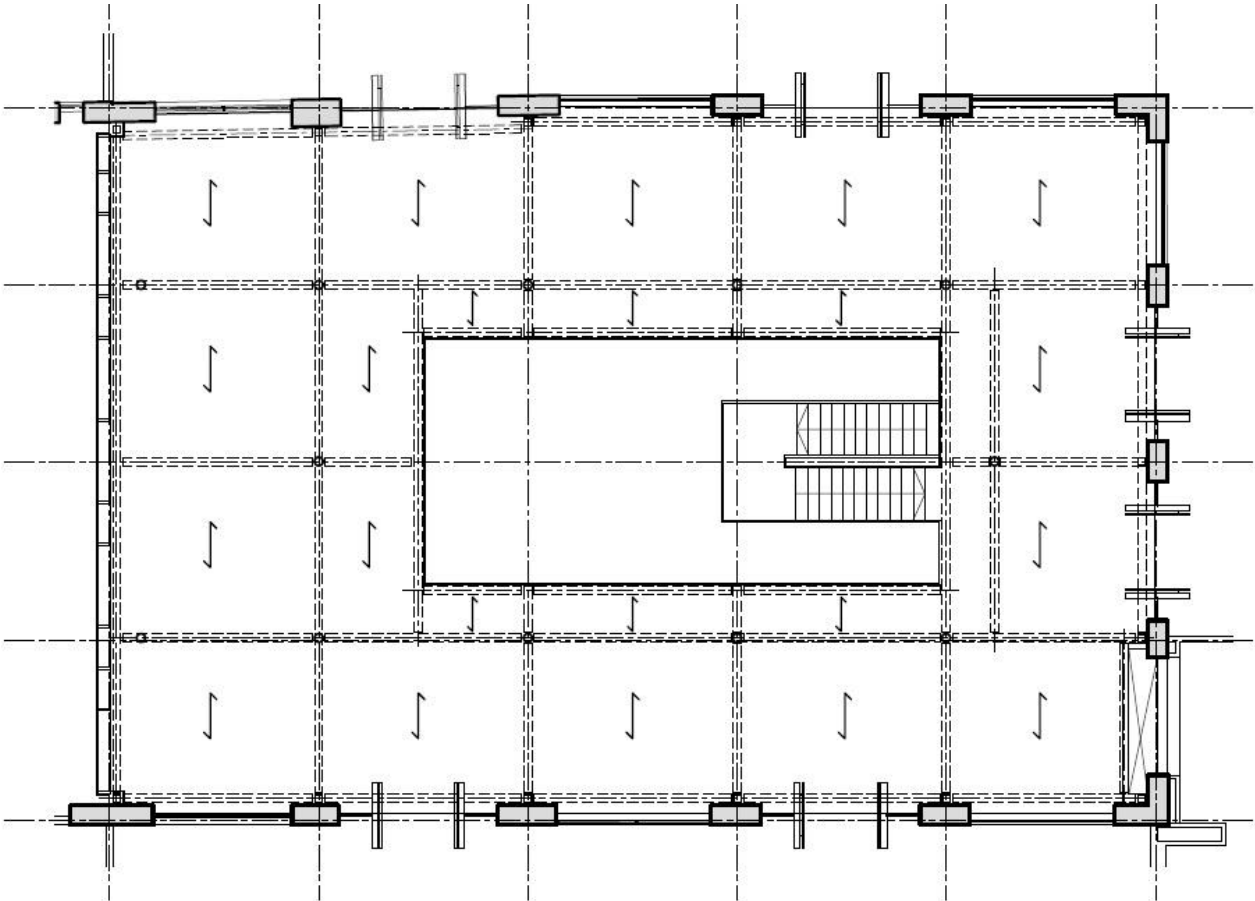
DELTALIGHT – B-LINER UP & DOWN

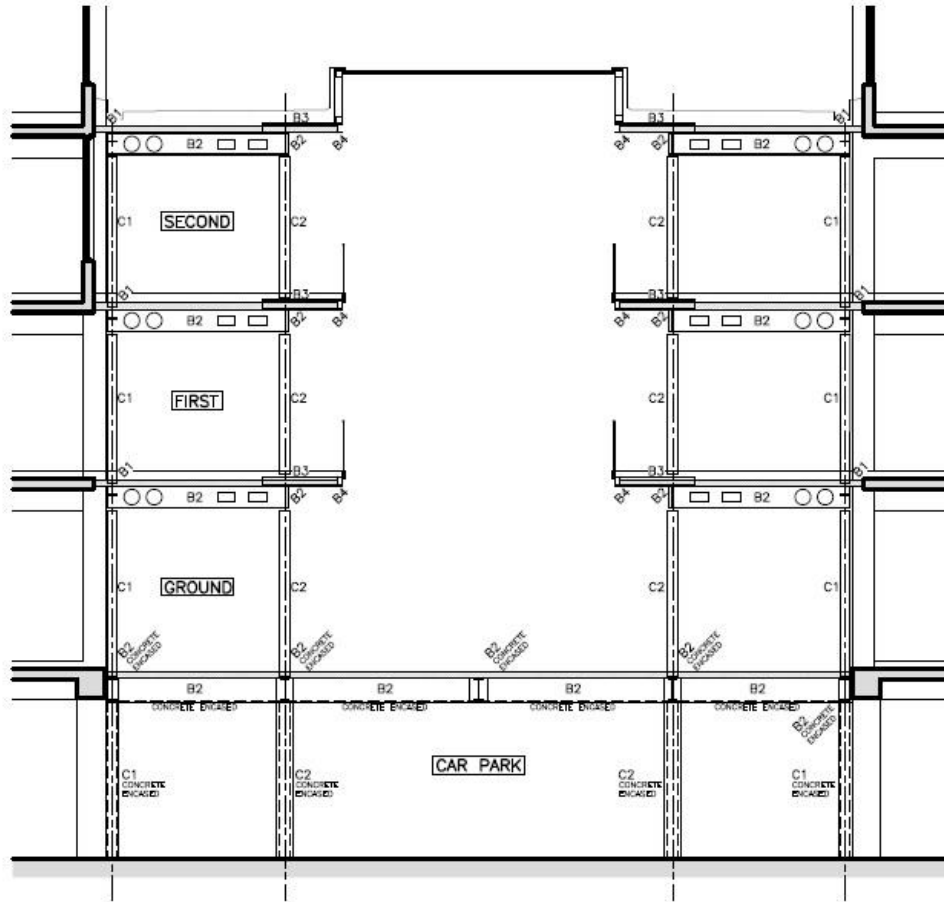


IGUZZINI – iN 60 UP & DOWN

The background is a blue-tinted architectural rendering of a classical building facade. It features a series of columns with decorative capitals, each topped with a crown-like motif. The columns are arranged in a perspective view, receding into the distance. Above the columns are arches and a series of windows or niches. The overall style is clean and modern, with a focus on geometric forms and perspective.

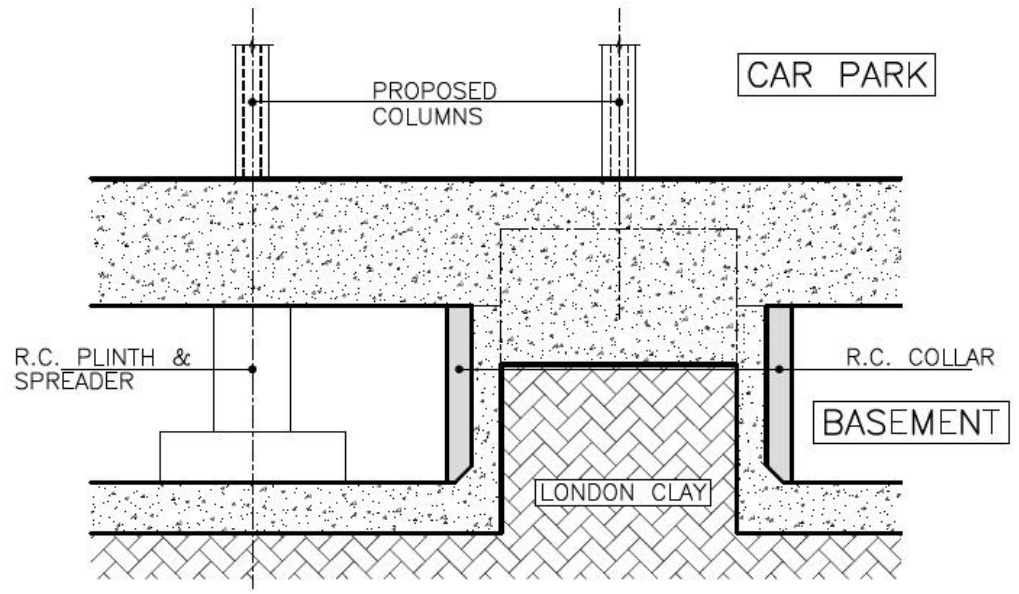
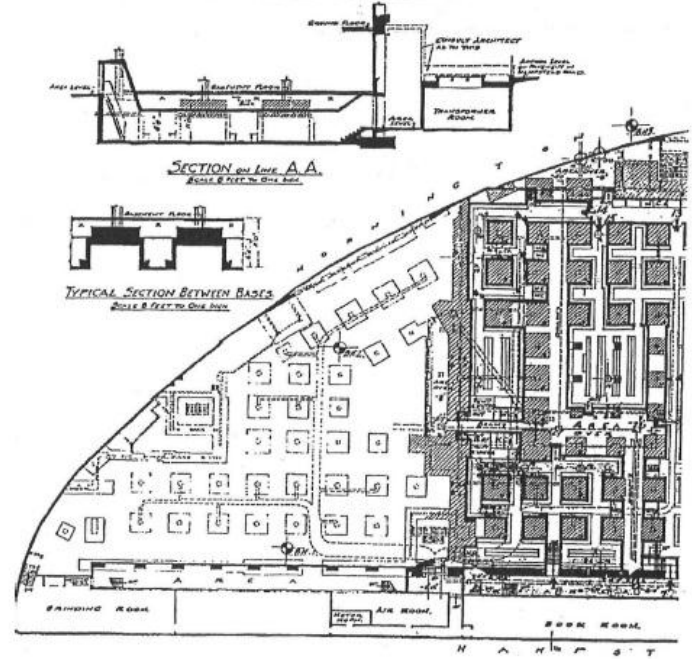
STRUCTURAL ENGINEERING APPROACH

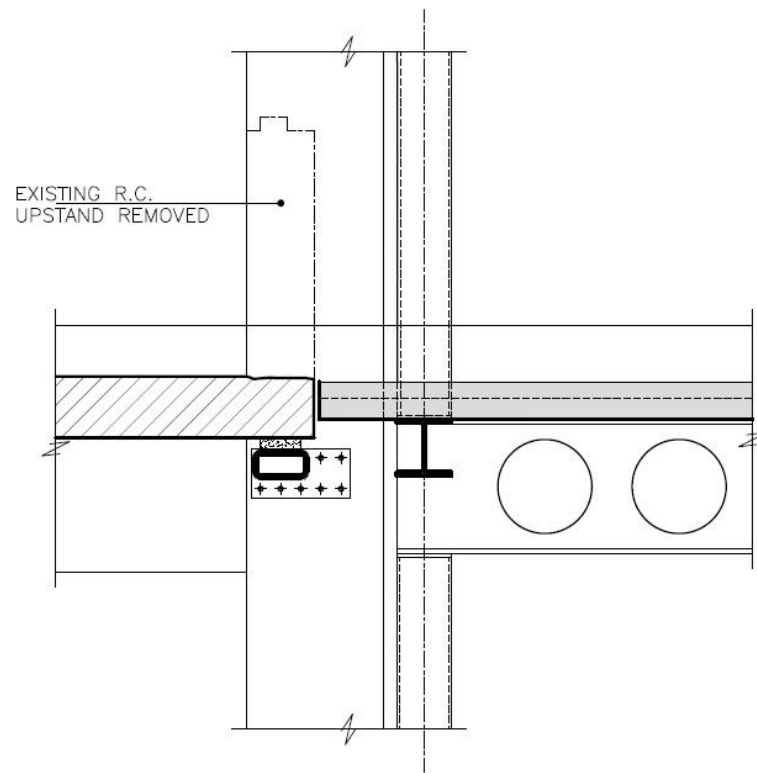
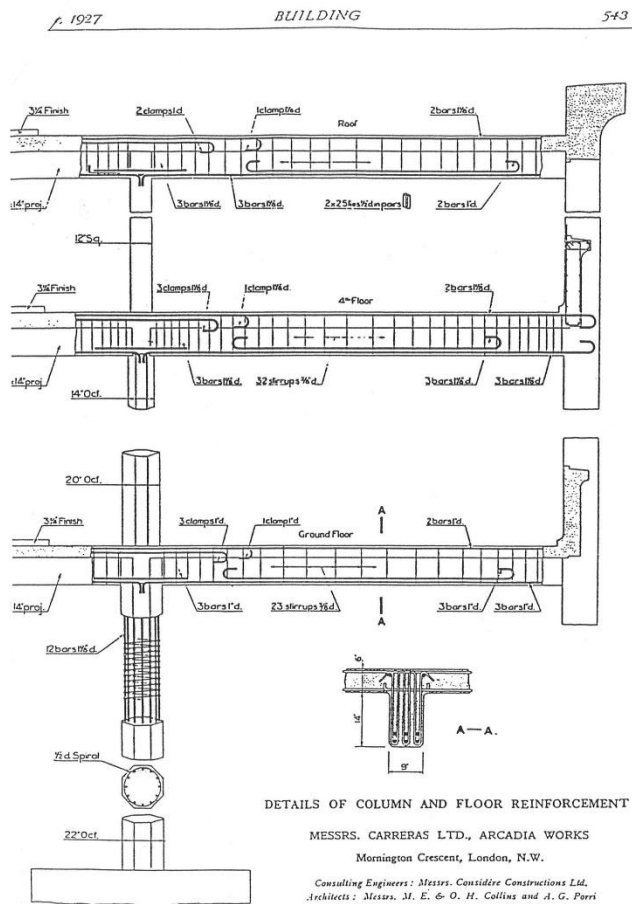




B1	203 X 203 UC60
B2	500DP. FABSEC WITH SERVICE SERVICE PENETRATIONS TO SUIT
B3	203 X 203 UC60
B4	203 X 203 UC46
C1	200 X 200 X 10SHS
C2	219.1 X 10CHS

MESS^{rs} CARRERAS LTD HAMPSTEAD ROAD - N.W.
AIR RAID SHELTERS UNDER BASEMENT FLOOR.
SCALE - 8 FEET AND 16 FEET TO ONE INCH.





INDICATIVE SLAB EDGE STRENGTHENING

