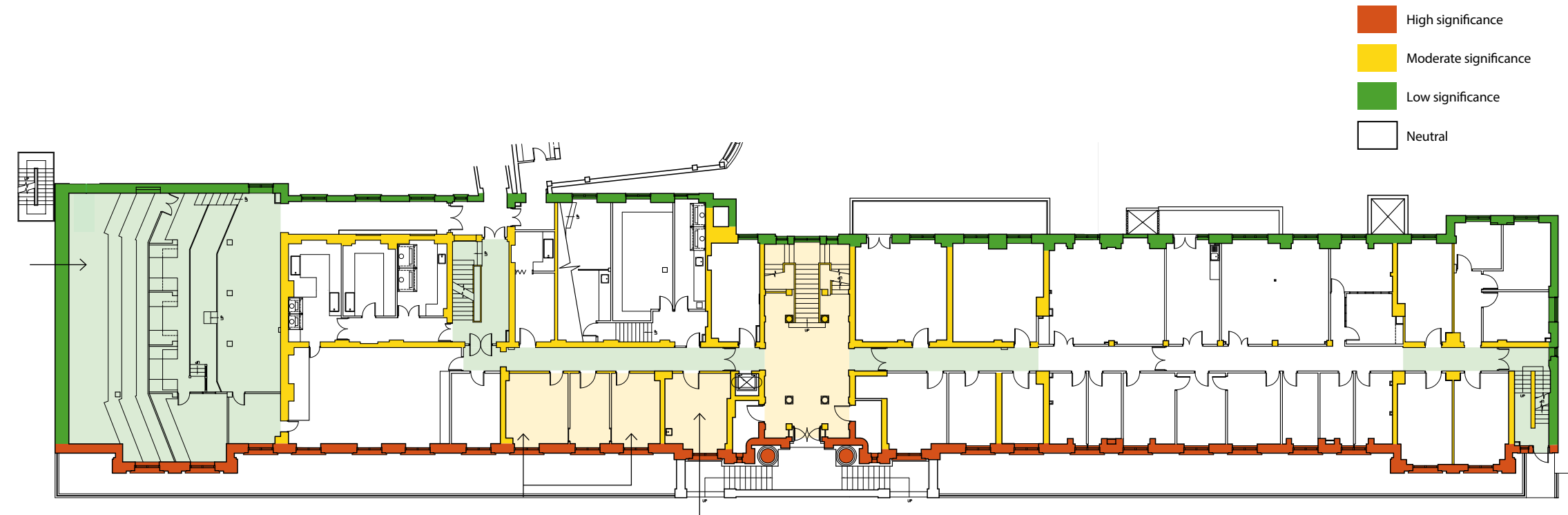


Section 03

Ground Floor

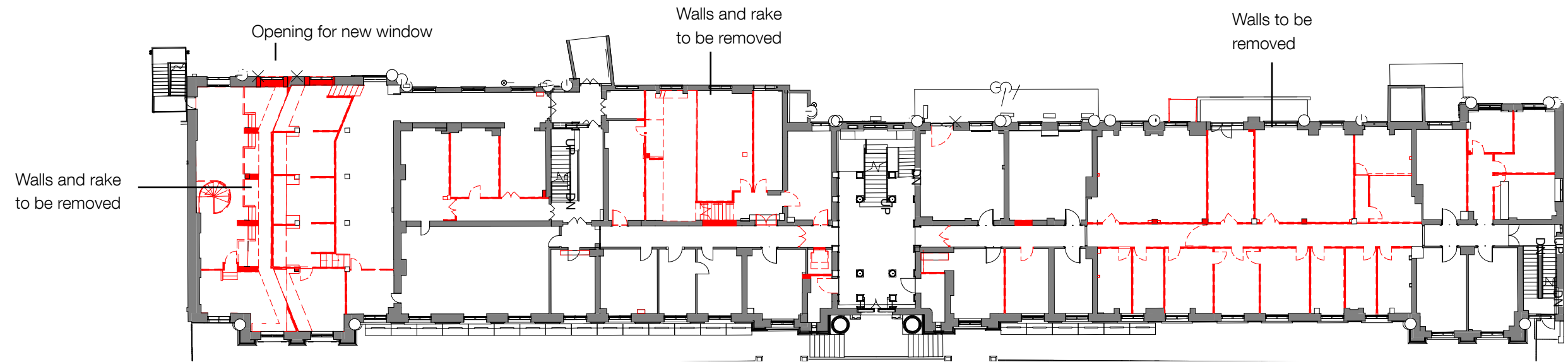
The proposed layout of the ground floor is split into three distinct areas, at the far eastern end (left hand side on plans) teaching spaces, linked to the central staircase via a new student hub space that unifies entrance from Gower Place and the Wilkins building, and new office space in the western end (RHS) of the KLB.



Ground Floor (Heritage Assessment Plan)

Professor's Lab used by Kathleen Lonsdale

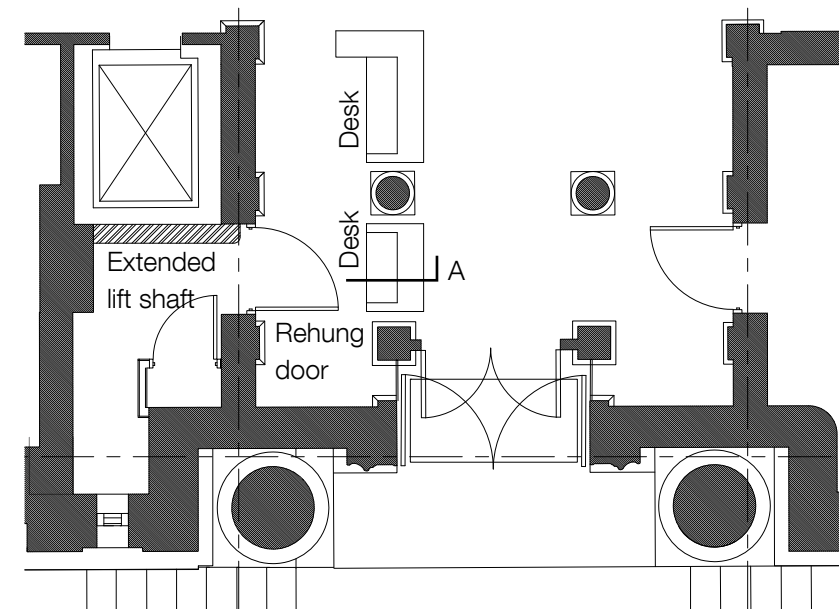
Professor's Office used by Kathleen Lonsdale



Ground Floor (Demolition Plan)



View of central staircase and new free standing desk



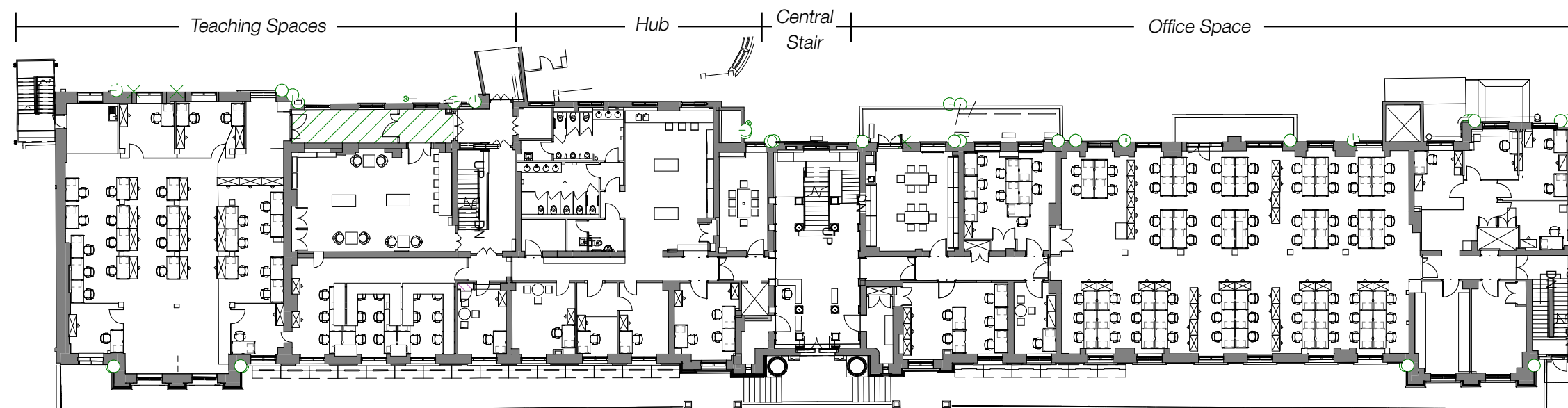
Extract of plan indicating location of desk and extended lift shaft

Entrance Hall

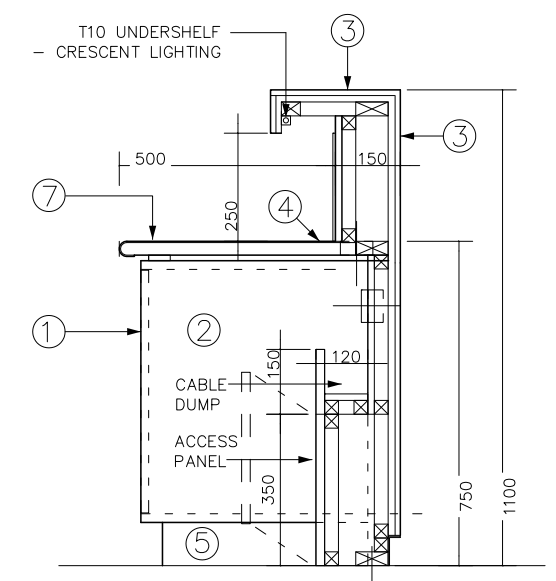
Throughout the pre-application process it has been clear that the entrance hall and central stair up to second floor level are some of the most significant areas for conservation. Aside from newer carpet and replacement lighting, this area is left largely in tact, with original features throughout.

It is proposed to introduce a new free-standing reception desk on the west side of the space (an installation that is reversible) and therefore minimises longterm harm to the building, install new lighting (in existing locations) and rehang a door to a store on the east side (to enable the liftshaft to be extended).

From this space, a hub is created to the east – leading to teaching spaces and the Wilkins Building, and to the west – new offices.



Ground Floor (Proposed)



Detail section (A) through reception desk

Section 03

Office Space

The key principle works for the west wing of the ground floor include:

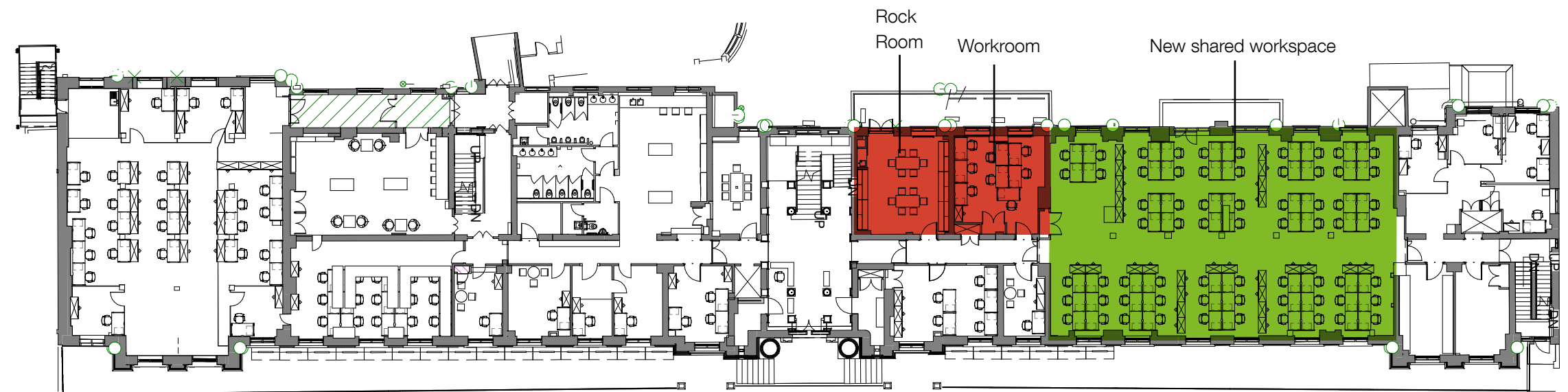
- Removal of non-original partitions to open up former large spaces to reinstate the former volume to reveal features and spatial qualities (green area on plan).
- Creation of a number of smaller office spaces for academics, mixed with the shared working spaces (green area on plan).
- The relocation of the Rock Room –an outreach facility with displays and storage of rock samples currently in the South wing of Willkins Building (red area on plan).
- Retention of doorway, frames etc (as outlined on page 18) as well as other original features including mouldings etc.



Rock Room



Workroom



Ground floor (proposed)



New shared workspace

Section 03

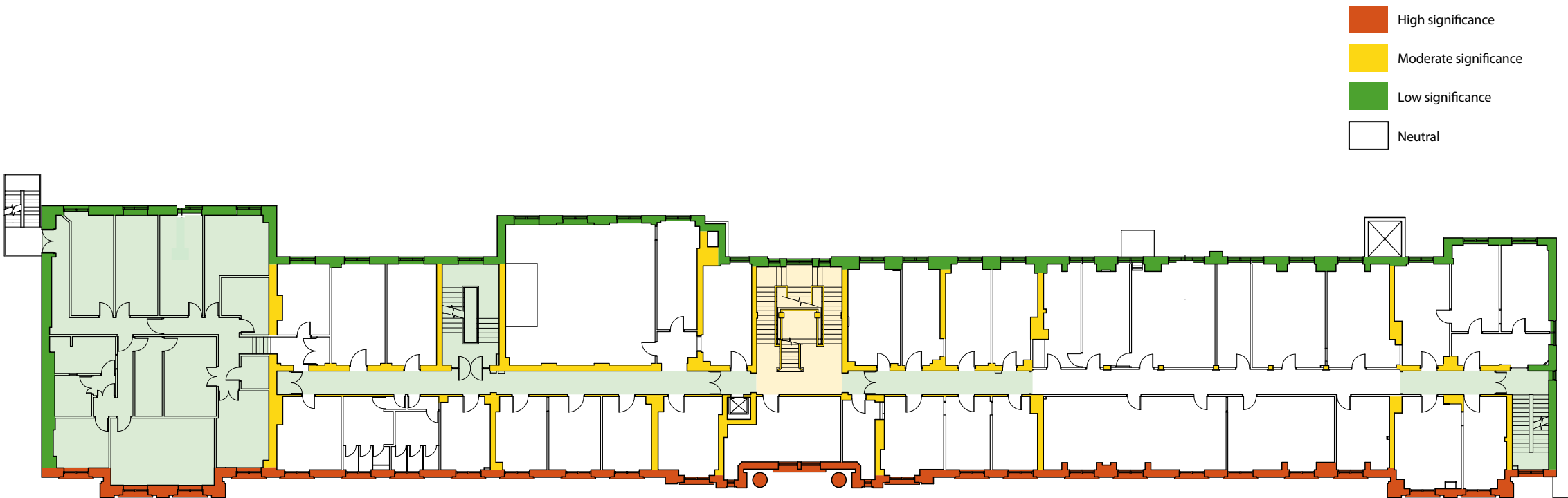
First Floor

Like the proposals for the ground floor, those for the first floor seek to rationalise and reorder the building's layout. Where subdivisions are still required – to form new offices and research laboratories – it is proposed to do this with glazed partitions so that the original spatial qualities are still evident.

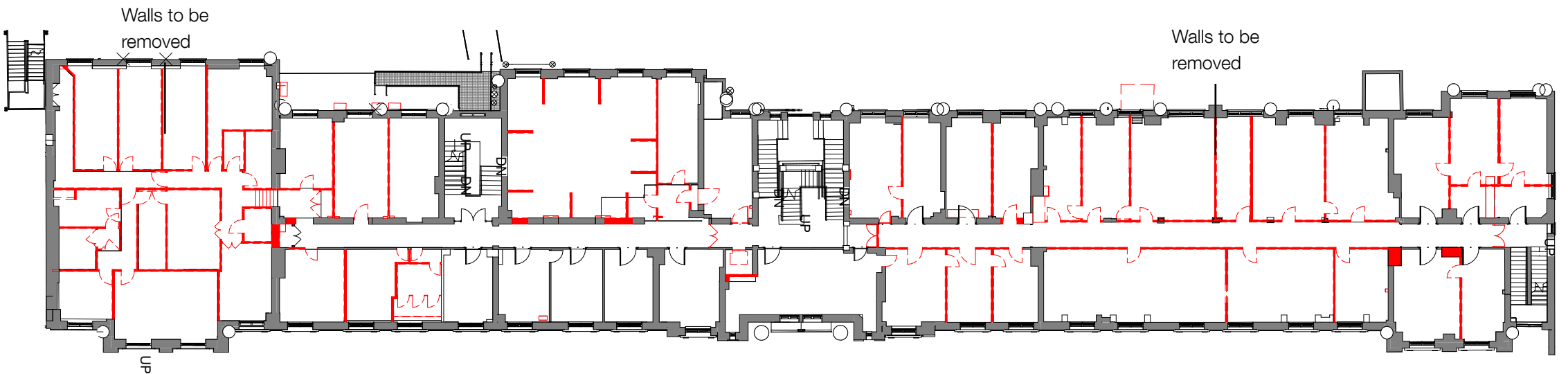
Recent interventions and partitions have compromised the building's original spaces. Working from east to west, a newer floor was installed within the former lecture space. As noted in the previous pages this impacted the use of the former raked lecture hall, but at this level the space created has reasonably low floor to ceiling heights and is at a different level to the main first floor. It is proposed to remove all partitions and ceilings, exposing the former ceilings that we know have some original ornamented plasterwork. It is intended to repair and replicate these details as necessary.

In the east wing nearest the central staircase, a mezzanine floor was inserted between this level and the second floor resulting in more spaces with low floor to ceiling levels and notably large beams crossing the corridor and compromising corridor space. This has meant that some of the existing doors have been modified with fanlights cut down and plastered over. The existing corridor is also a mix of original paneled and newer flush doors.

It is proposed to rationalise the treatment of the corridor and remove a large number of non-original partition walls. Existing doors will be retained where the room layout is maintained. Where new layouts are proposed, the few original doors will be reused elsewhere in the building and new glass doors will be inserted.



First Floor (Heritage Assessment Plan)



First Floor (Demolition Plan)

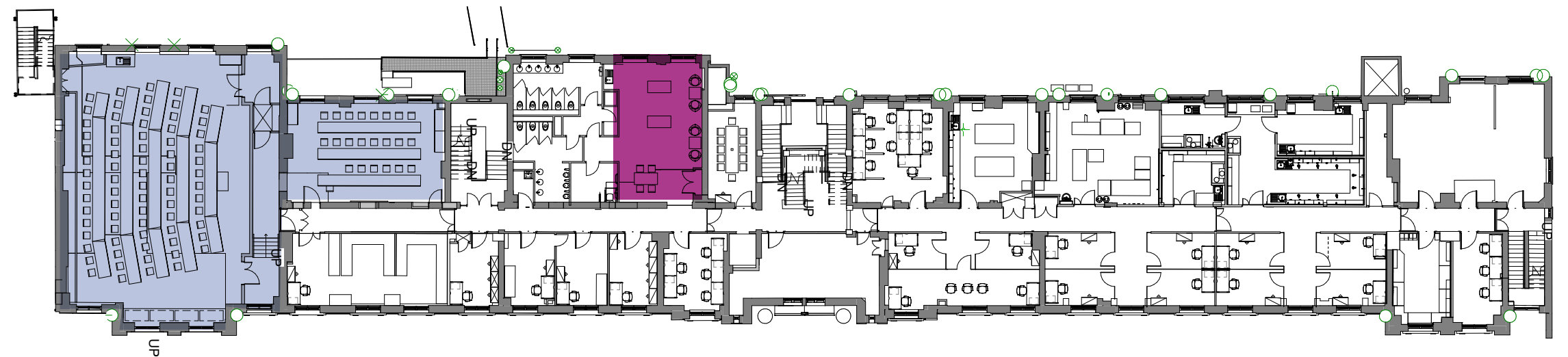
Teaching Spaces

More significant works are proposed in the eastern wing of the building. It is proposed to remove the former lecture rooms from the east wing of the building – to create new level and more flexible teaching and social study spaces. Both these former teaching spaces are currently under utilised partly due to them being spatially compromised by historic structural interventions.

Investigations into the original construction of the rake to the larger space have shown a steel construction, and no notable features have been revealed/ discovered to date.



Large Teaching Room - facing south



First floor (proposed) - Teaching laboratories (blue), Hub (purple)



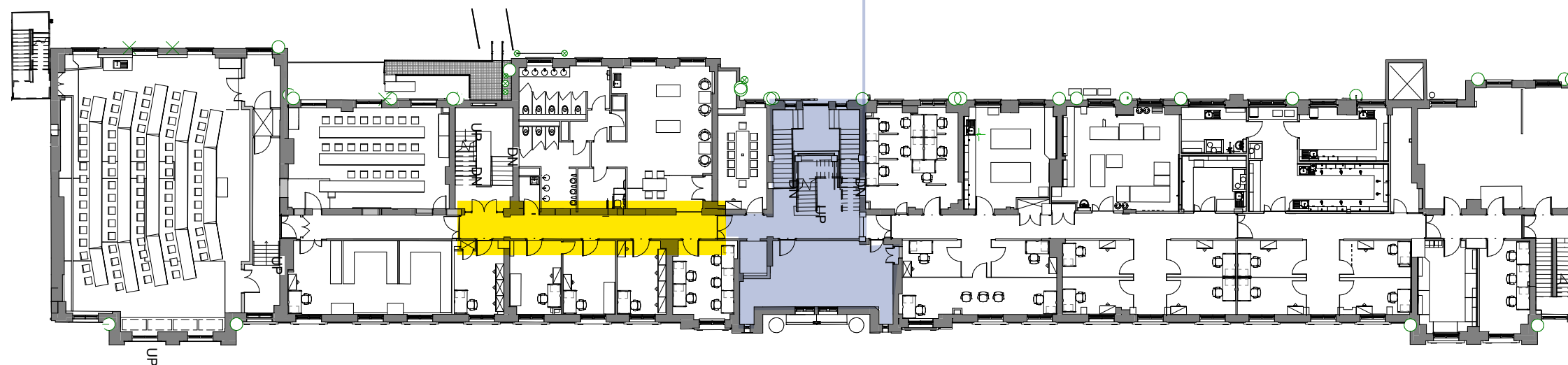
Retained first floor door set



Retained terrazzo



New Labs at first floor, west wing



First Floor (proposed) - Central staircase and hub in blue

First Floor

Like the proposals for the ground floor, those for the first floor seek to rationalise and reorder the building's layout. Where subdivisions are still required – to form new offices and research laboratories – it is proposed to do this with glazed partitions so that the original spatial qualities are still evident.

Recent interventions and partitions have compromised the building's original spaces. Working from east to west, a newer floor was installed within the former lecture space. As noted in the previous pages this impacted the use of the former raked lecture hall, but at this level the space created has reasonably low floor to ceiling heights and is at a different level to the main first floor. It is proposed to remove all partitions and ceilings, exposing the former ceilings that we know have some original ornamented plasterwork. It is intended to repair and replicate these details as necessary.

In the east wing nearest the central staircase, a mezzanine floor was inserted between this level and the second floor resulting in more spaces with low floor to ceiling levels and notably large beams crossing the corridor and compromising corridor space. This has meant that some of the existing doors have been modified with fanlights cut down and plastered over. The existing corridor is also a mix of original paneled and newer flush doors.

It is proposed to rationalise the treatment of the corridor and remove a large number of non-original partition walls. Existing doors will be retained where the room layout is maintained. Where new layouts are proposed, the few original doors will be reused elsewhere in the building and new glass doors will be inserted.

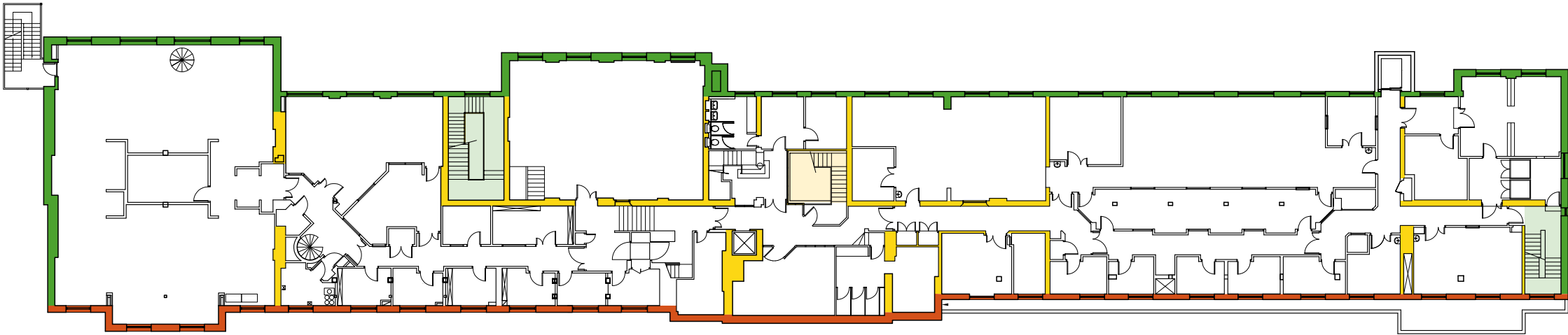
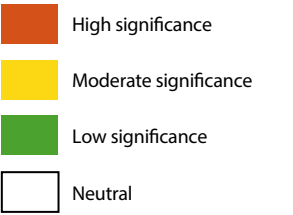
First Floor

- In the west wing a similar approach is proposed.
- Original doors will be retained where the room layouts are retained.
 - New glass doors will be provided in the new glazed partitioning and screens
 - At the far west end facing Gower Court a new plant room is proposed. The works here require the existing rear sash windows being removed and replaced metal louvre panels – this is noted in more detail at the start of this section.
 - In the centre of the plan (blue area on plan) – off the main staircase a new hub will occupy a former lab space. This space has areas of original brickwork exposed, and other features will be revealed. New glazed doors (to encourage views and maximise daylight will replace non-original existing doors. There is an original detail of terrazzo wall cladding that extends up to dado level. This detail is to be retained and repaired as part of the works.
 - It is proposed that the lift shaft in this area is also modified.

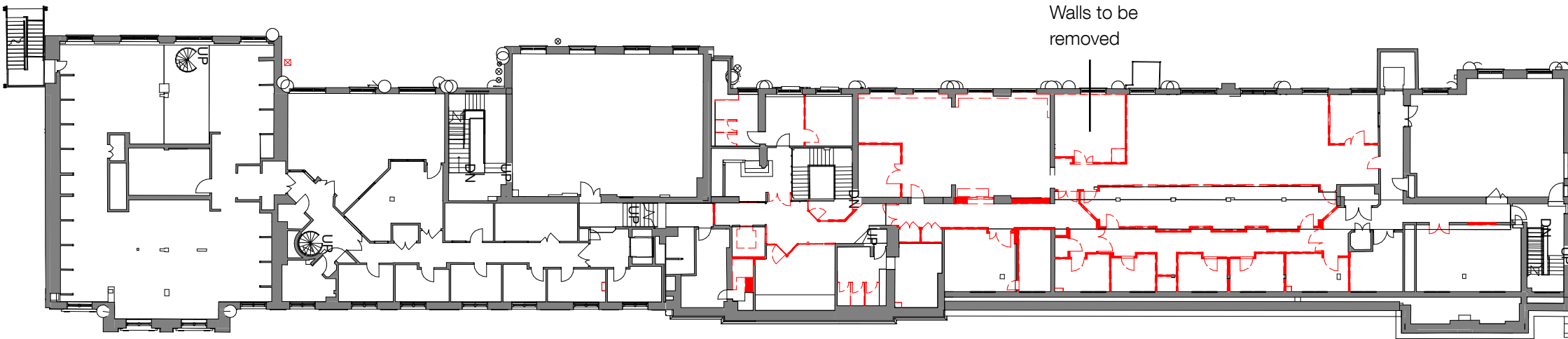
Section 03

Second floor

The works to the second floor are far less extensive than at ground and first floor. The whole of the east wing is unaffected by the proposals and is out of scope. In the west wing it is proposed to remove all the more recent partitioning and introduce new lab spaces to suit the end users’ requirements. As outlined earlier the labs at this level, together with the basement and first floor require a number of extract flues on the rear façade. There are already consents for two different arrangements for these flues - it is proposed that the new arrangement matches the most recent consent.



Second Floor (Heritage Assessment Plan)



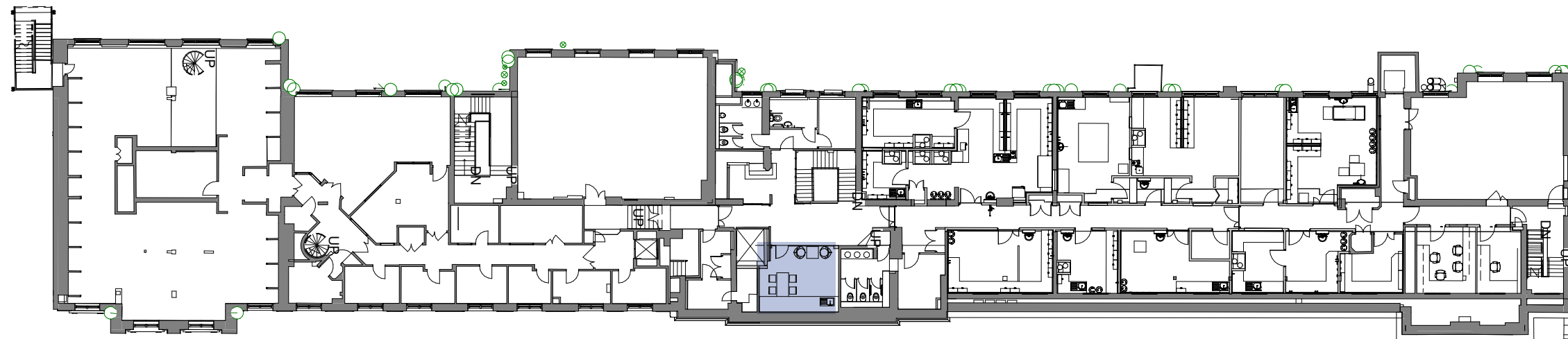
Second Floor (Demolition Plan)



New laboratory space at second floor

Another improvement within the proposals are works around the existing staircase, creating a clearer route up the centre of the building.

Existing secure doors partway up the staircase are to be removed with refurbishment works in the newer staircase to make it more visually similar.



Second Floor (proposed) - central stair and hub in blue

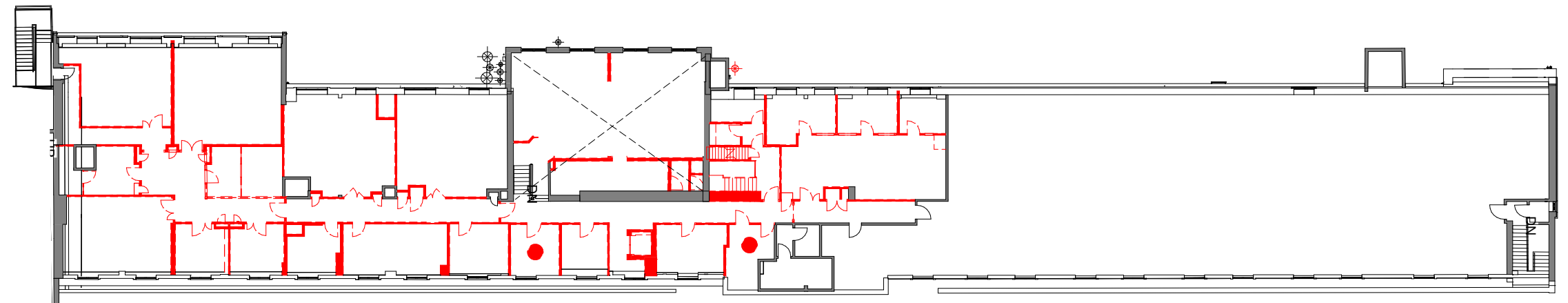
Section 03

Second Floor Mezzanine

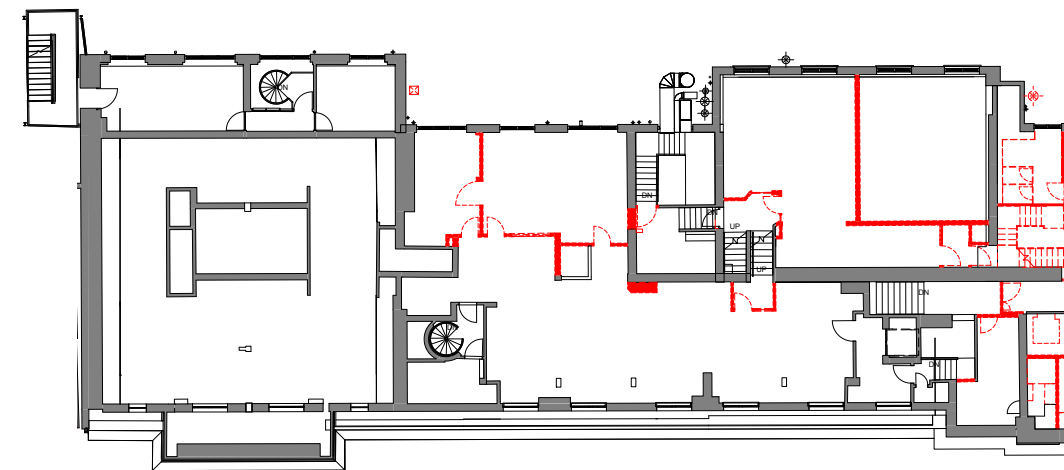
It is proposed to remove the more recent partitioning to part of the second floor mezzanine. Whilst these floors are not original to the building, the new offices will be largely glass fronted to enhance the principles adopted on the original floors below and continue the strategy of opening up large spaces within the floor plate.

Third Floor

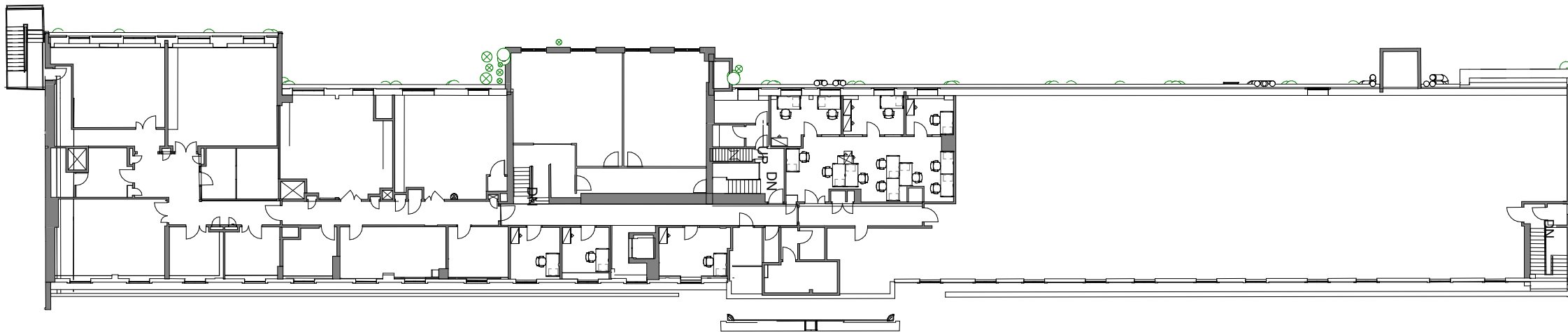
The partition layout of the central part of the third floor plan remains, but there are superficial refurbishment works at this level.



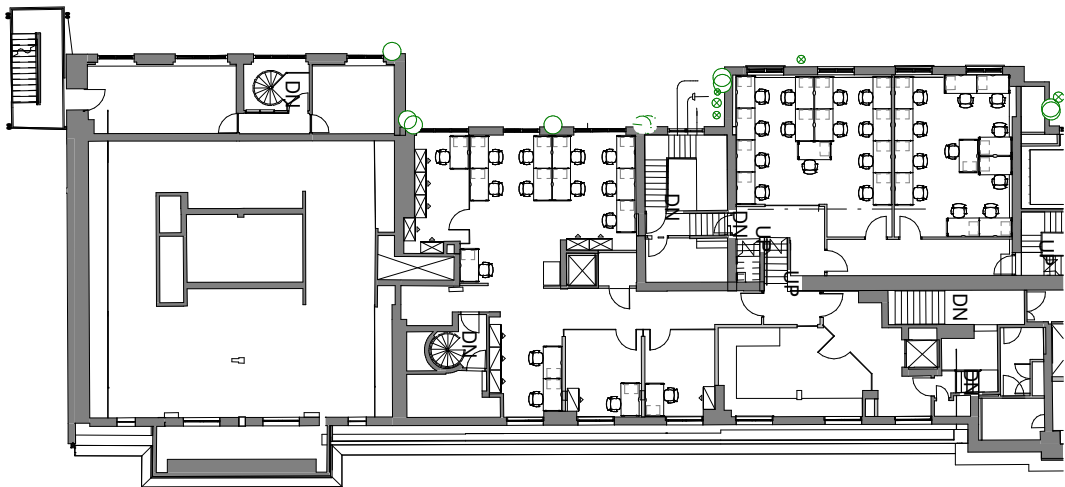
Third floor (demolition plan)



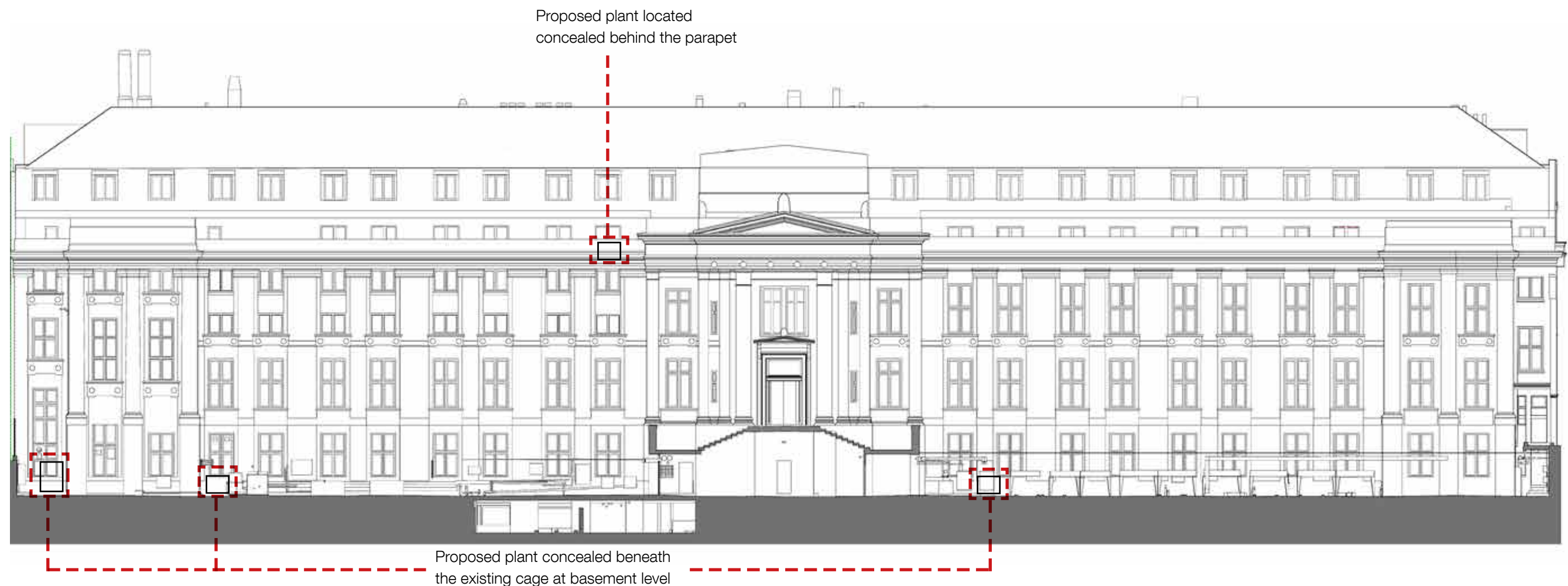
Second floor mezzanine (demolition plan)



Third floor proposed



Second floor mezzanine proposed



Gower Place elevation

The Gower Place elevation is of high significance and only very minor works are proposed.

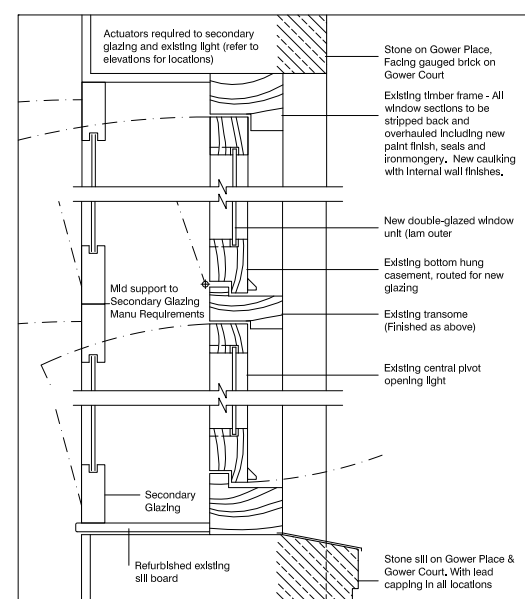
As noted earlier, the works to Gower Place windows are generally an overhaul (ensuring operation, redecoration and replacing ironmongery where necessary) but not a wholesale reglazing exercise. However, it should be noted that some existing panes of glass will need to be replaced due to cracks and holes formed for fan units,

All windows on this elevation will receive secondary glazing.

It is also proposed to lead cap all existing stone sills (front and rear) to reduce the risk of future water penetration and staining - given the age of the existing construction.

The installation of additional plant is also proposed however all items are to be concealed from street level and situated behind the parapet at 3rd Level and beneath the existing cage at basement level. All refrigerant pipework and cabling is to run internally and not on the front elevation.

No further works are proposed.



8 Typical Window Details
A1000 Gower Court, Doubled glazed - 1:20@A1

Blue hatching - reglazed windows
 Red hatching retained glazing with internal secondary glazing



Rear Elevation (above)

Camden noted:

"There is scope to significantly improve the rear elevation. The removal and rationalising of the accumulated pipe work along with the repair of areas of brickwork would be welcome."

The proposals seek to rationalise the rear facade to improve visual amenity. The proposals include the removal of an existing glazed and steel enclosure (a redundant hoist), the removal of redundant extract flues, as well as some of the pipework that runs across the facade. The extent of the works is indicated above.

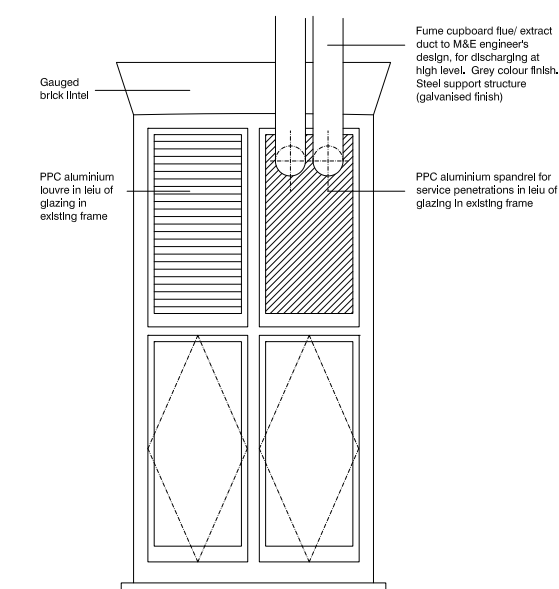
New flues will be required to service the refurbished laboratories that meet modern standards. It is therefore proposed that like when new louvres are required (outlined on page 19/20), new flues will be installed to exit the building via a spandrel panel in the window and grouped in a aesthetically pleasing and neat manner to rise up the rear of the building. It is suggested that this approach will have least impact to the existing building and will be reversible.

The new flues would be located adjacent or near to the more recent lift core at the west end of the building.

It is proposed that areas of plant on the rear elevation are rationalised where possible, some of the smaller chiller units will be removed, their function being covered by replacing the existing chillers at roof level, as well as a centralised unit discretely positioned at Gower Court level.

The proposals also seek to replace two existing entrances from Gower Court at basement level - one at the centre of the building near the main staircase and the other at the west end.

In both cases a new set of doors are proposed with suitable arrangements for access and security. The existing doors are particularly utilitarian in character, and whilst these will remain predominantly for servicing the building, they will provide access from the passageway into the building. To improve the environment further, the central set of doors (which will be used more by pedestrians) will have a new metal canopy to provide shelter.



6 Window with Services Elevation
 A1000 Gower Court - Scale 1:20@A1