



Rhyl Primary School  
 Job  
 For Planning Approval  
 status

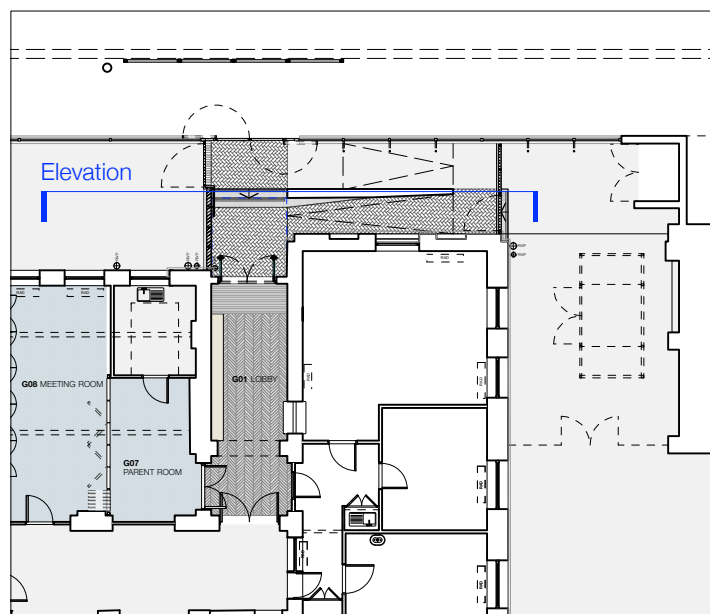


Rev E - rainwater pipe moved, additional notes. Emergency light fittings indicated.

All dimensions to be checked on site

**notes**

-	06.02.15	planning issue
A	26.05.15	planning rev A
B	20.07.15	planning rev B
C	11.09.15	planning rev C
D	14.10.15	planning rev D
E	06.05.16	planning rev E
rev		



- 1 Aluminium clad cantilevered canopy with integrated downlighting and stainless steel lettering.
- 2 Bricks made good to match surrounding brickwork, where new lintels inserted
- 3 Individual stainless steel letters on corner of wall.
- 4 Timber framed glazed doors with bespoke manifestation
- 5 PPC Rainwater pipe
- 6 Concrete ramp kerb wall and steps with textured/patterned finish. Brick finish to ramp.
- 7 Painted steel fin balustrade.
- 8 Painted steel fence to match existing
- 9 New step
- 10 CCTV camera relocated
- 11 Painted steel handrail
- 12 Stainless steel signage
- 13 Existing emergency illumination
- 14 -
- 15 Emergency light moved upwards
- 16 Paint finish on top of existing paint. Colour - light grey.

North Elevation  
 Proposed

**title**

1403\_P\_1302\_revE  
**drawing number**

