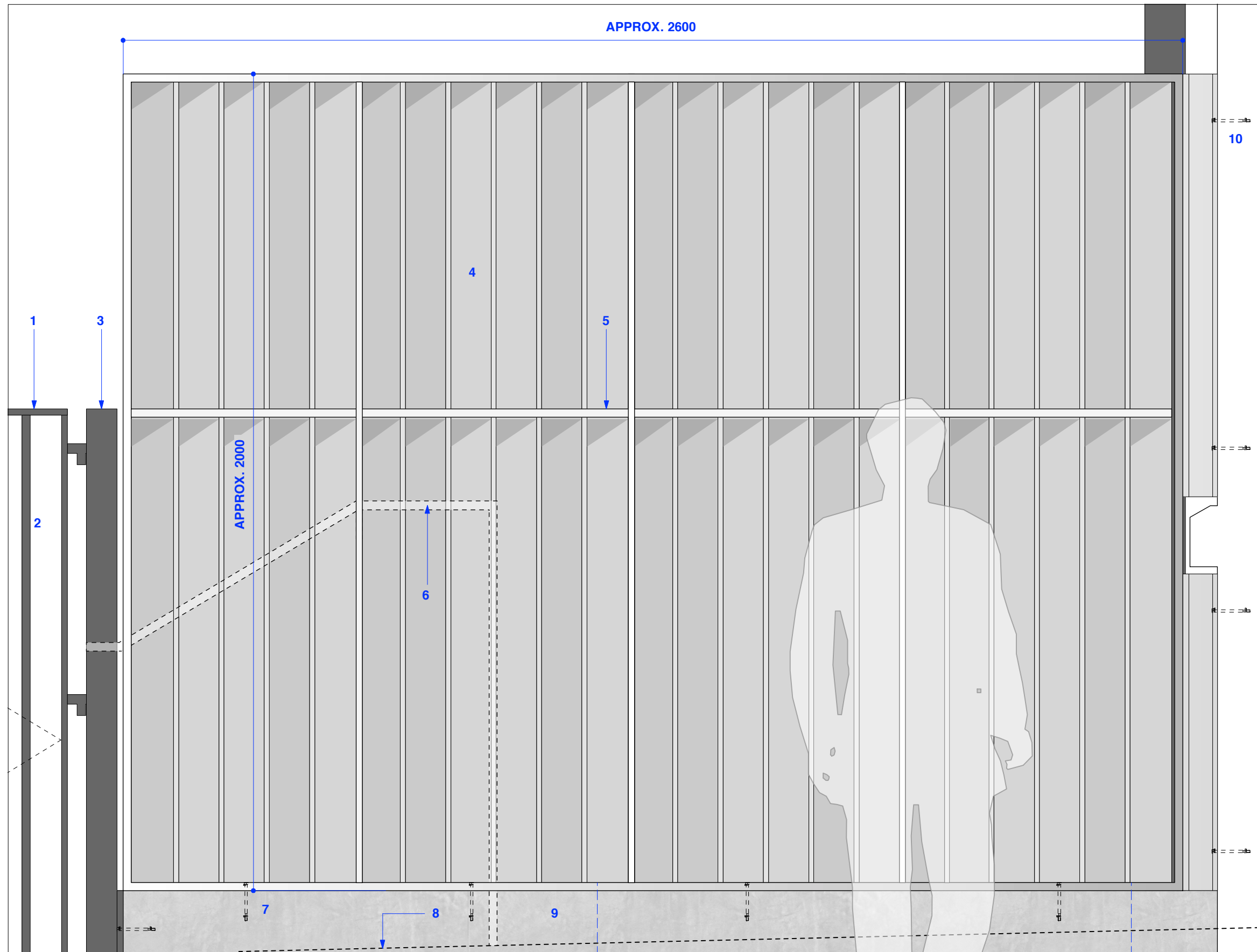
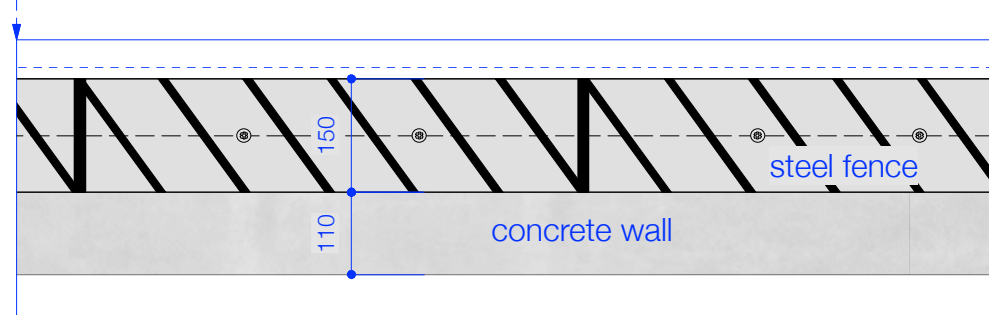


- 1 Painted steel flats to match existing railings. Welded joints.
- 2 Circular rods to match existing in painted steel with welded joints.
- 3 Square support posts (replicating existing fence posts) in painted steel. Support posts resin anchored to concrete support wall - see item 8.
- 4 Painted steel fencing with obliquely positioned fins to obscure view from entrance into play area. All joints welded, painted light grey. Star-headed recessed countersunk bolt fixings at base and end wall.
- 5 Support rail to align with adjacent railings. Depth of rail to be such that it is visible only from this side and not the entrance side.
- 6 New handrail in painted steel flats (dotted as it is to other side of fin fencing)
- 7 Countersunk fixings. Fixings to structural engineers specification.
- 8 Floor level to entrance area dotted
- 9 New concrete wall with new strip footing, butting up to existing wall.
- 10 Post set off wall to avoid the stone cill. Post fixed to wall with resin anchor fixings between mortar joints.



1. West Fence (gate adjacent to entrance)
1.10 @A3



Plan view of steel flats
1.10@A3

mountain
3 Greenland Place
Camden Town, London NW1 0AP
07967 111 660



Rhyl Primary School
Job
For Planning Approval
status

All fixings and structural supports to structural engineers specification

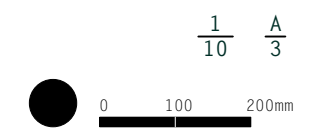
All dimensions to be checked on site

notes

- 06.05.16 planning issue
rev

Railings Drawing
3
title

1403_P_1123
drawing number



This drawing is copyright of the architect.