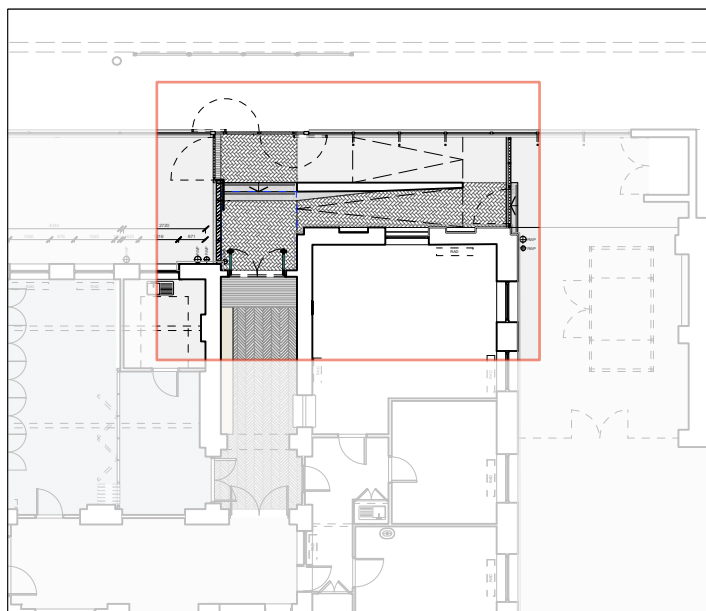


1. Plan of Entrance Area
1.50 @A3

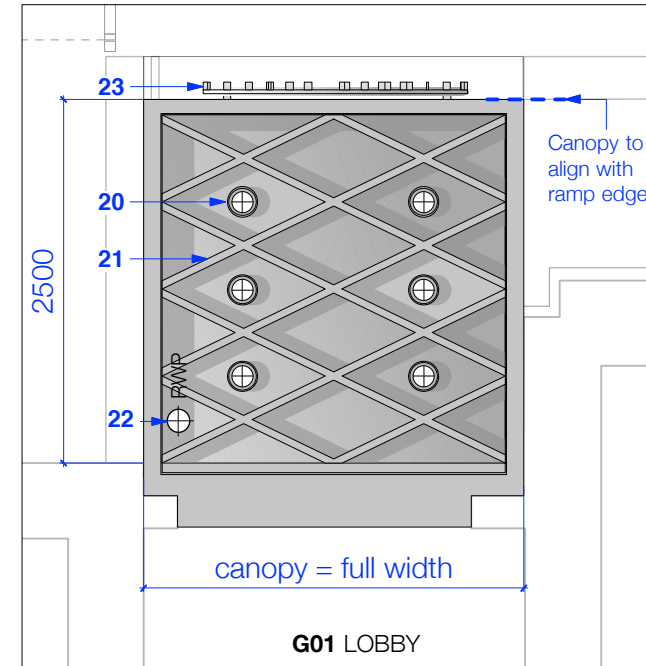


- Entrance Security Buzzer (door power assist button)
- Rainwater Pipes
- +0.150 Indicative Level (note-levels are for guidance only and use lobby as datum +0.00)

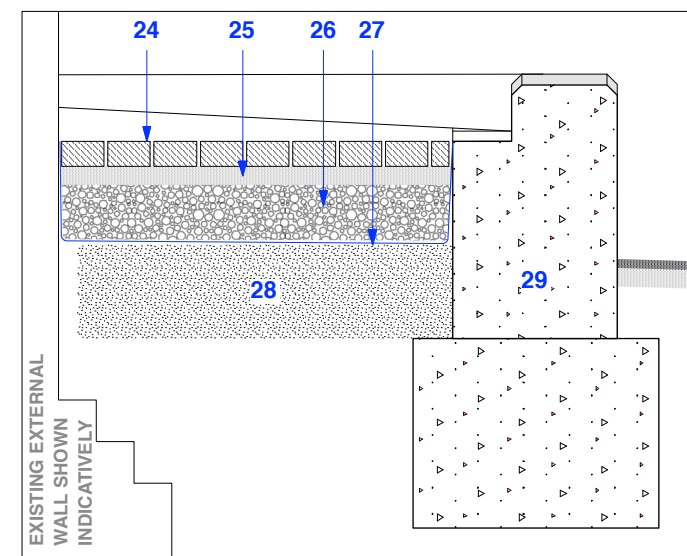
- | | |
|---|---|
| <ul style="list-style-type: none"> 1 Railings with urn finials and low brick wall 2 Railings with low brick wall 3 Low concrete support wall for ramp 4 Entrance gates - re-configured and re-hung to allow one leaf to swing outwards and one to swing inwards. Stripped down and re-painted black. 5 Brick finish to ramp. Brick to abutt against existing building. 6 Steel 'Fin' Balustrade 7 Brick Pavers 8 Tarmac (existing) 9 Painted steel fence and gate 10 New painted steel gate 11 Slot drain | <ul style="list-style-type: none"> 12 Concrete step for maintenance access / access to bikes (lockable) 13 Cantilevering Entrance Canopy (dotted) 14 New timber framed glazed doors 15 Entrance barrier matting 16 Timber parquet flooring 17 Timber bench 18 Painted steel handrail 19 Concrete steps with integrated rubberised nosing strips 20 Downlighters 21 Painted steel structure 22 Rainwater pipe 23 Stainless steel lettering 24 Brick pavers 25 Sand bedding course 26 Gravel/stone sub-base 27 Geo-textile membrane. Adhered to existing masonry wall 28 Sub soil 29 Concrete wall to structural engineers spec |
|---|---|

Notches in stone cill where fence post sit to be infilled with matching cement-based patching compound

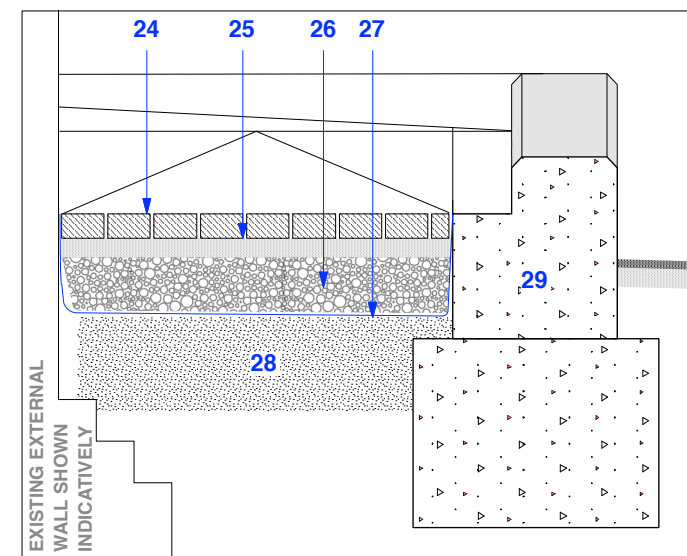
2 x builderwork holes for 2 x heating pipes to travel through existing wall below floor level



2. Reflected Ceiling Plan of Canopy
1.50 @A3



3. Ramp Section A
1.20 @A3



4. Ramp Section A
1.20 @A3



rev E - new ramp drawings, new builderswork holes indicated, new notes added throughout

- All dimensions to be checked on site
- notes
- 06.02.15 planning issue
 - A 26.05.15 planning rev A
 - B 20.07.15 planning rev B
 - C 11.09.15 planning rev C
 - D 14.10.15 planning rev D
 - E 06.05.16 planning rev E
- rev

GA Entrance
title

1403_P_1110_revE
drawing number