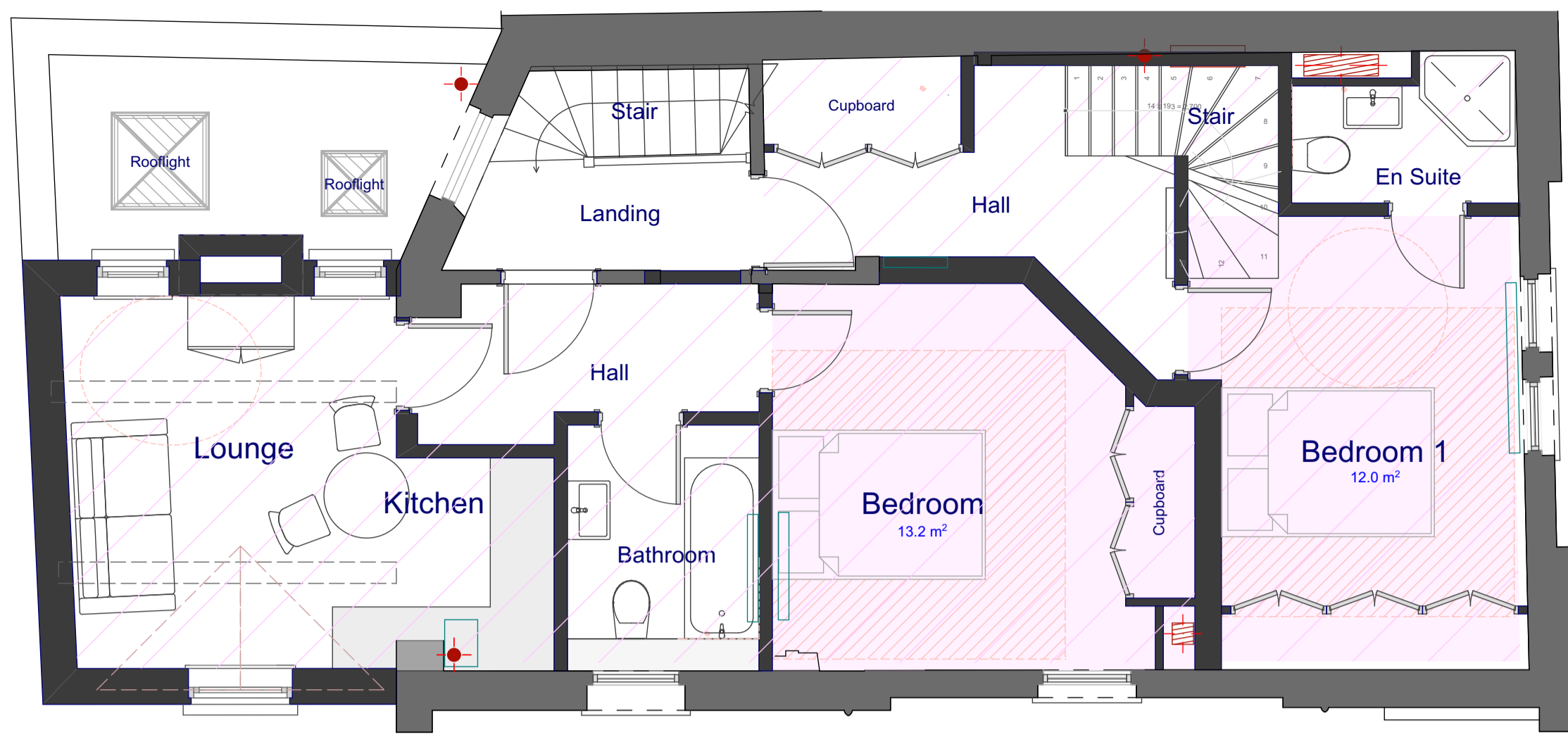
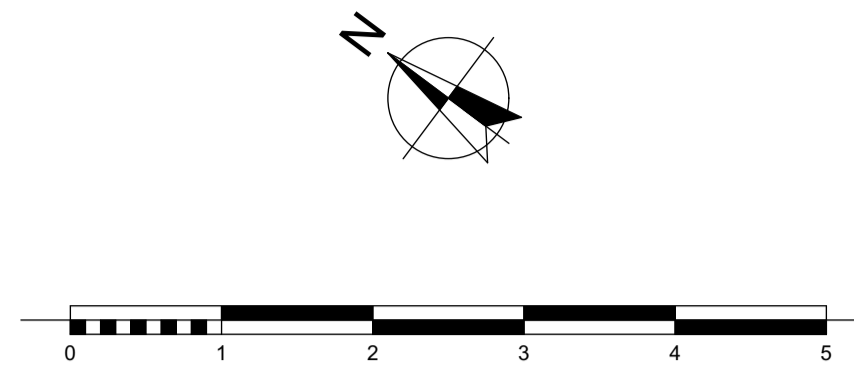


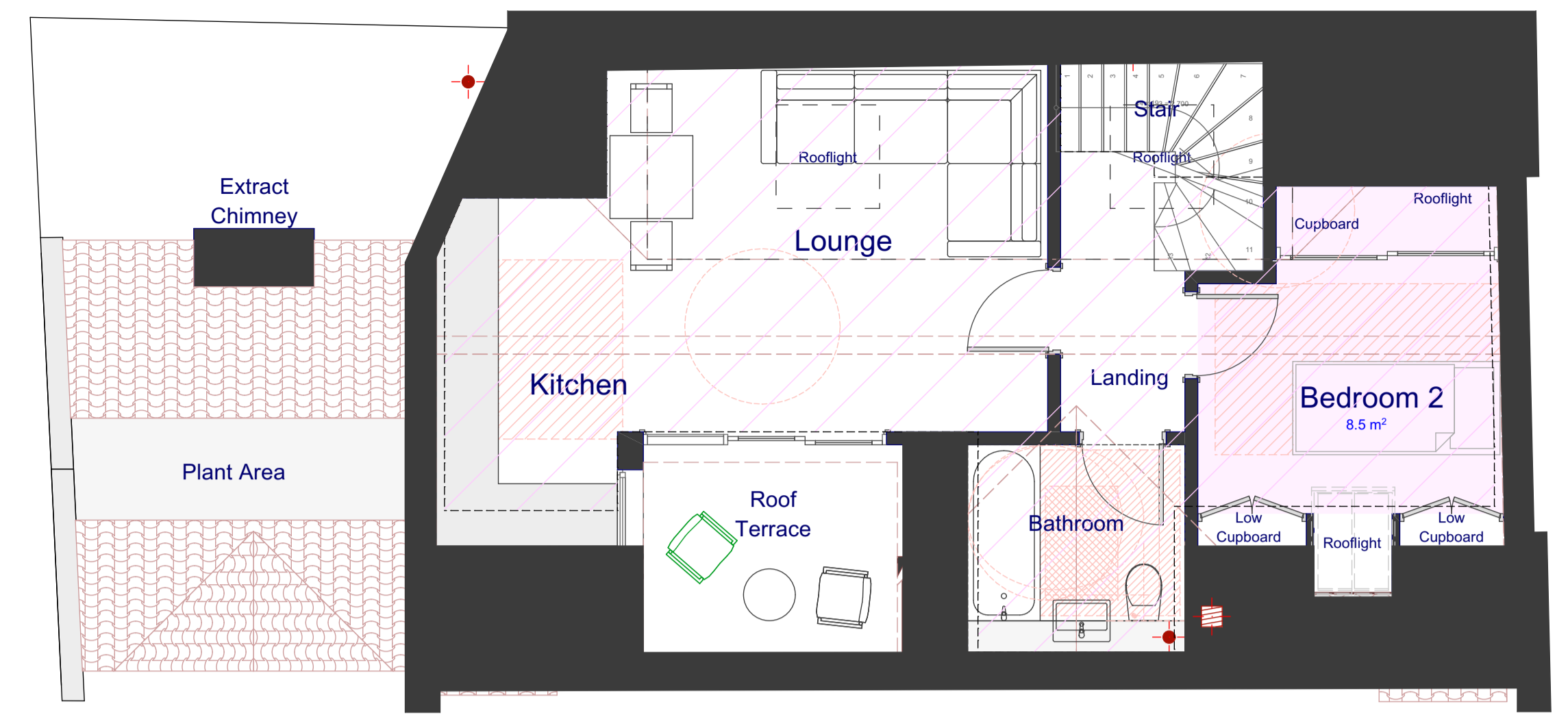
PROPOSED PLANS



FLAT 4 36.0 m²

FLAT 5 24.5 m²

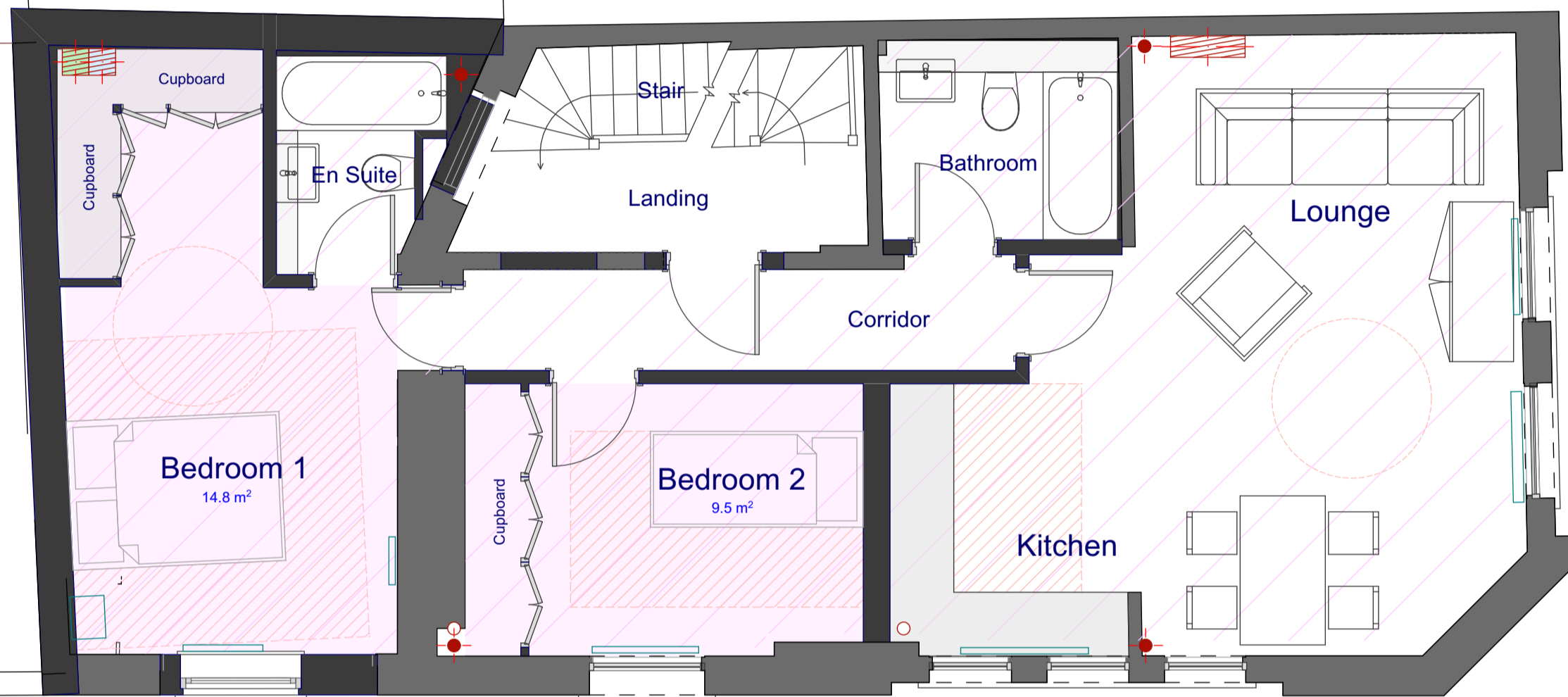
THIRD FLOOR



FLAT 5 37.0 m²

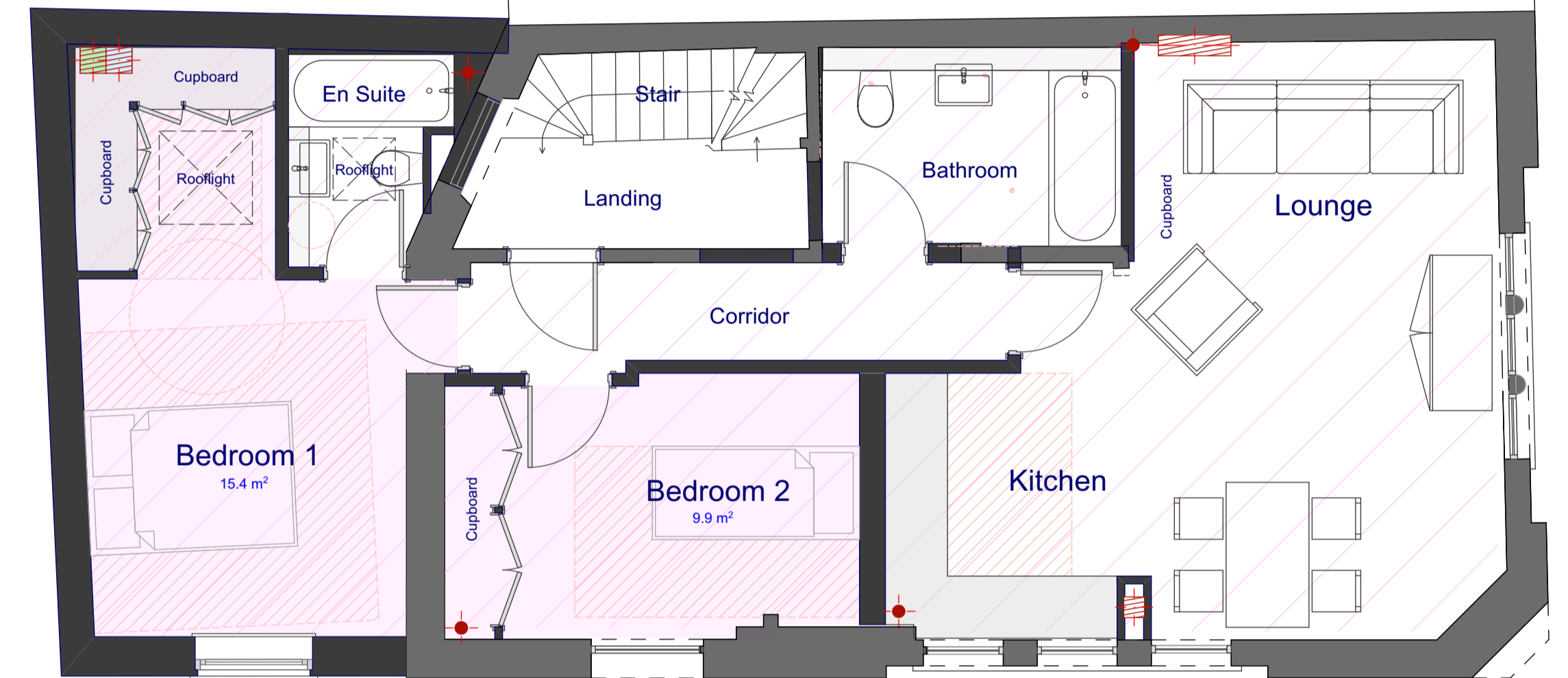
FOURTH FLOOR

PROPOSED ACCOMMODATION (M2):
 Flat 5 - 24.5 + 37 = 61.5
 Flat 4 - 36
 Flat 3 - 67
 Flat 2 - 65
 Flat 1 - 38 + 24 = 62
 Restaurant - 40 + 24 + 32



FLAT 2 65.0 m²

FIRST FLOOR



FLAT 3 67.0 m²

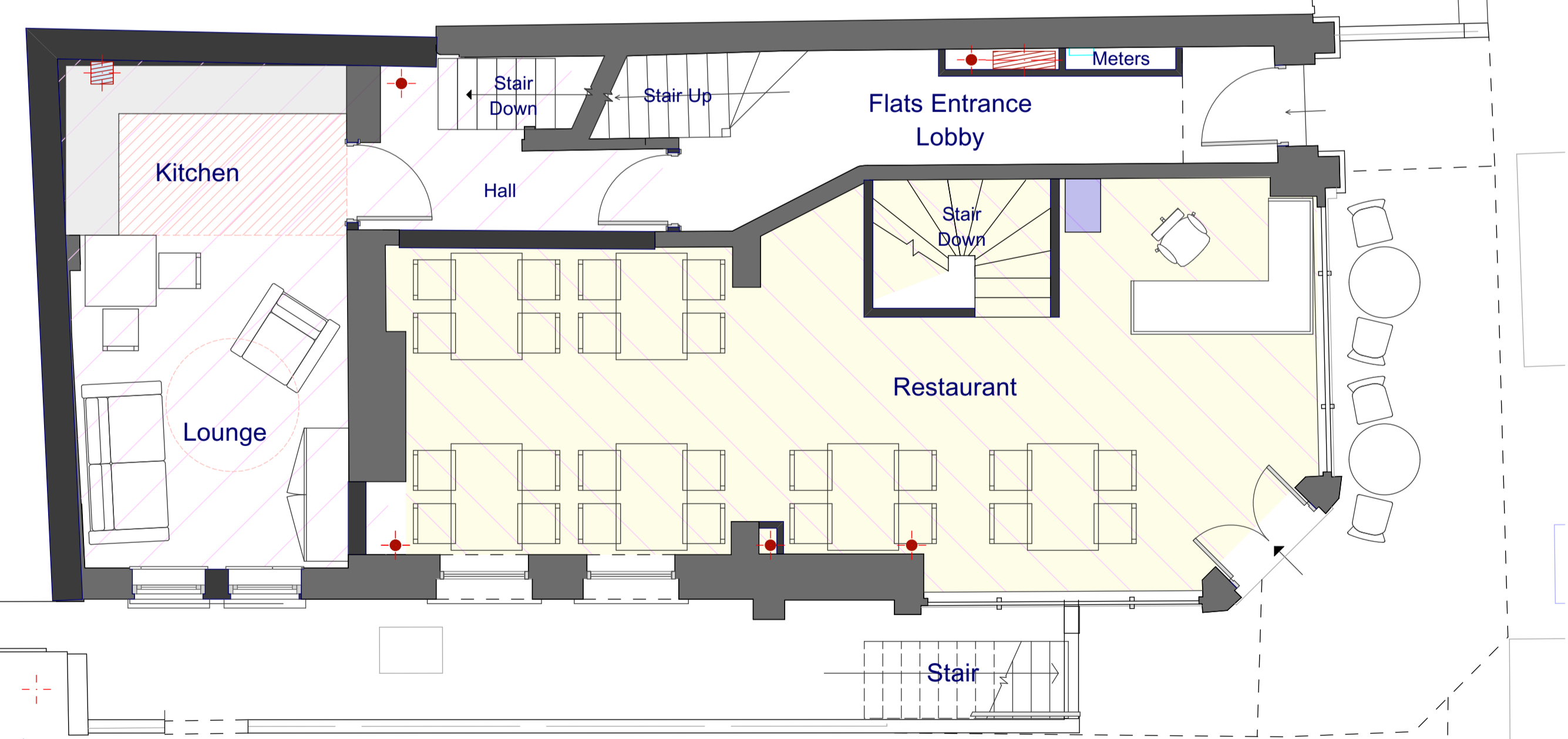
SECOND FLOOR



FLAT 1 38.0 m²

BASEMENT FLOOR

RESTAURANT 24.0 m²
ANCILLIARY 32.0 m²



FLAT 1 24.0 m²

GROUND FLOOR

RESTAURANT 40.0 m²

Basement bike & bin locations amended as approved drawing 433/P/19 Rev B - J
 Second floor altered to one flat only - H
 Minor amendments - G
 Minor amendments - F
 Revised further to Pre App advice & design review - E
 Revised further to Pre App advice - D